



# PARKVIEW DRIVE / EVANS STREET DRAINAGE STUDY

BOMA WORK SESSION

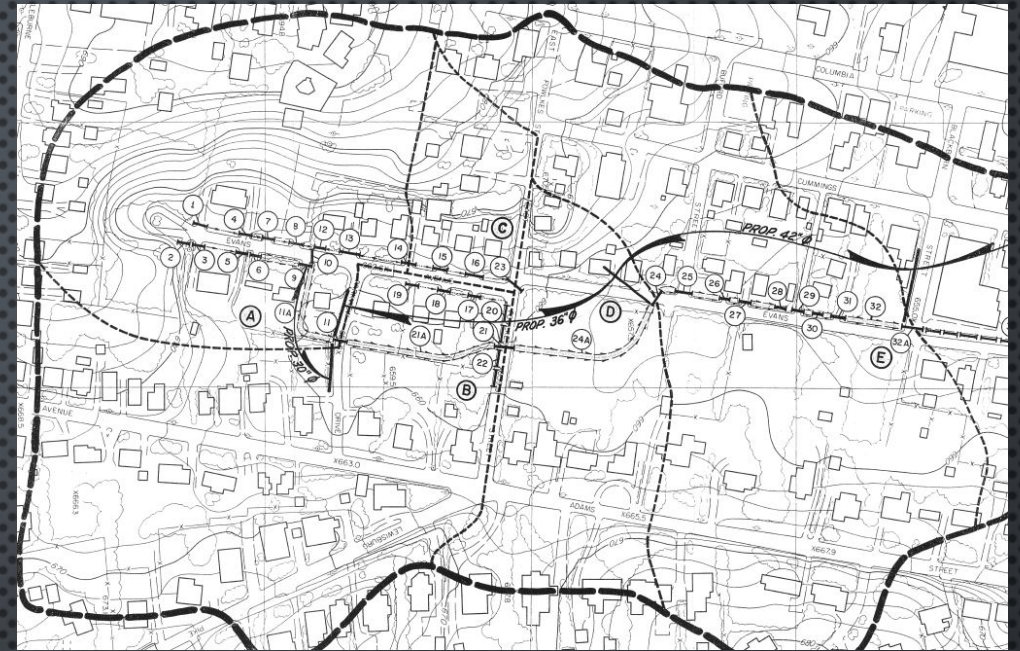
AUGUST 13, 2019



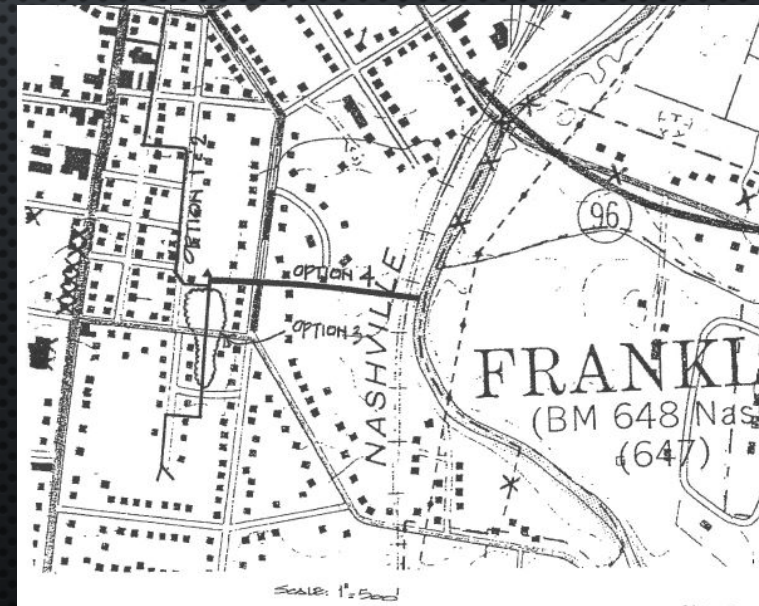


# Project Overview

- The City has received a number of calls and emails from residents concerning localized flooding and problems within the Parkview / Evans Street Drainage Area
- This area was initially studied in 1982 by Kuhlman & Fly Engineers. This study was then updated in 1995 by Smith Seckman Reid, Inc. and updated again in 2015 by BWSC.
- The purpose of these studies was determine ways to address the localized flooding within the area and plan long term infrastructure upgrades.



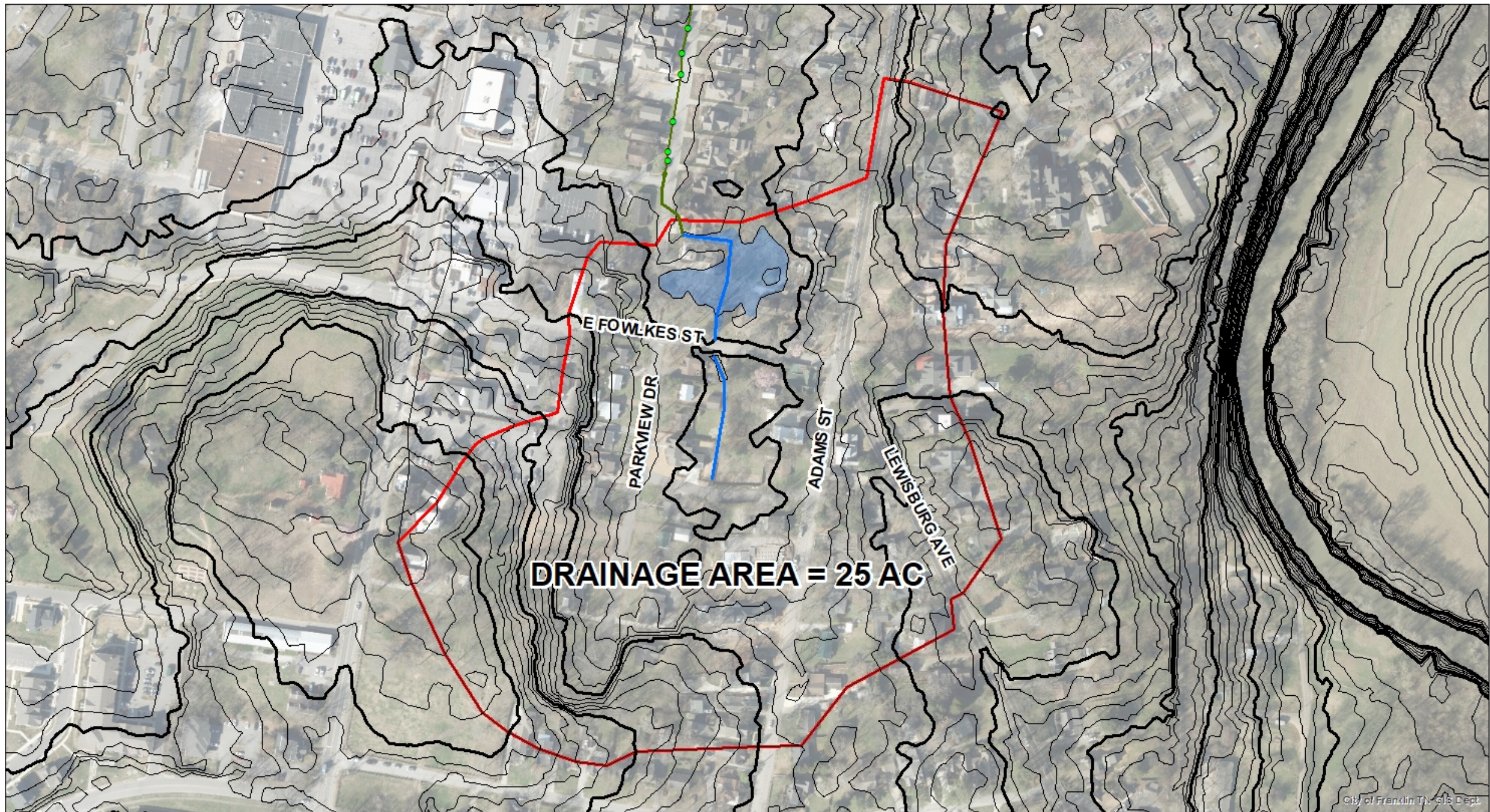
1982



1995



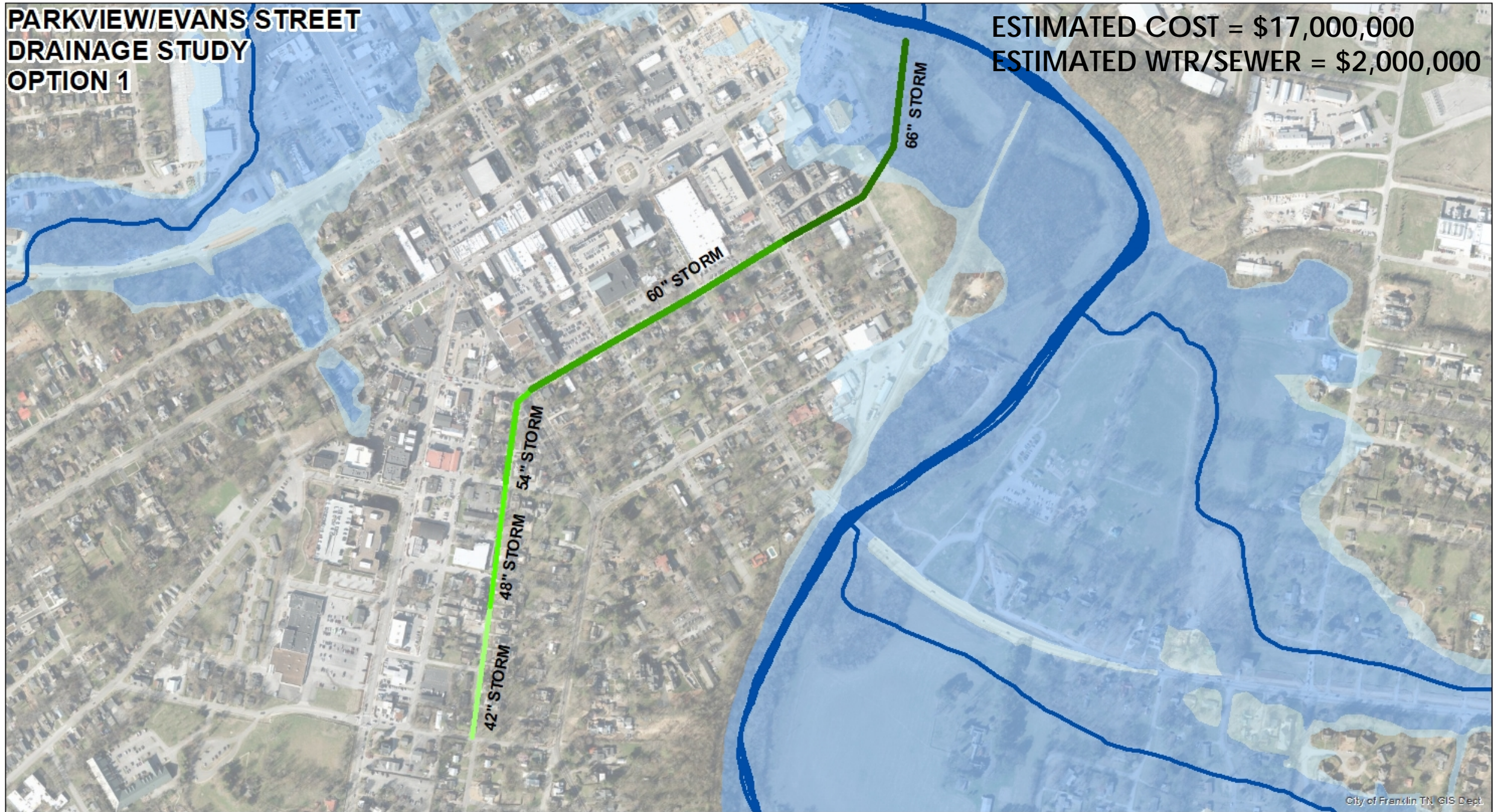






**PARKVIEW/EVANS STREET  
DRAINAGE STUDY  
OPTION 1**

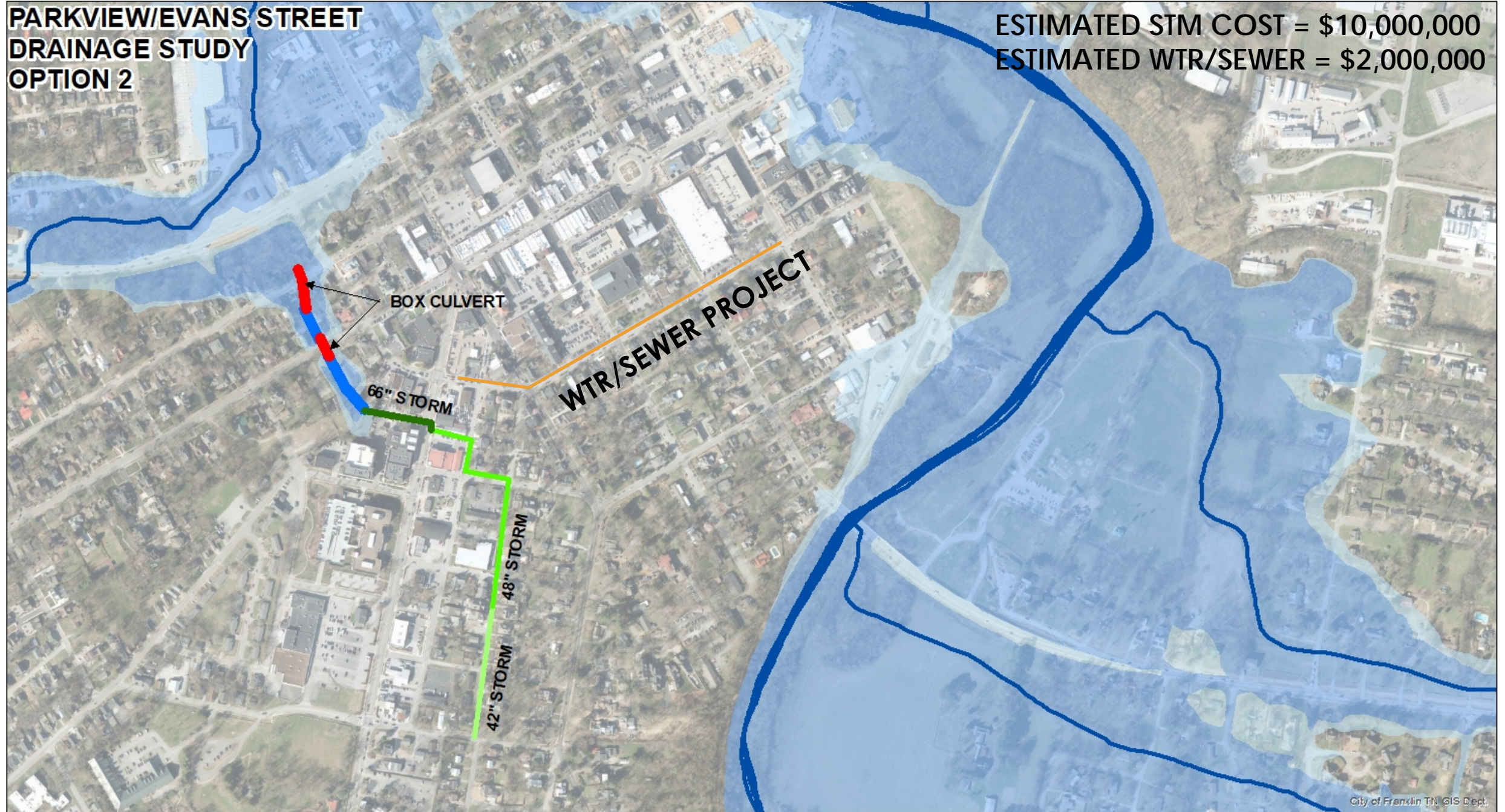
**ESTIMATED COST = \$17,000,000**  
**ESTIMATED WTR/SEWER = \$2,000,000**





**PARKVIEW/EVANS STREET  
DRAINAGE STUDY  
OPTION 2**

**ESTIMATED STM COST = \$10,000,000  
ESTIMATED WTR/SEWER = \$2,000,000**





**PARKVIEW/EVANS STREET  
DRAINAGE STUDY  
OPTION 3**

**ESTIMATED STM COST = \$5,000,000  
ESTIMATED WTR/SEWER = \$2,000,000**

**WTR/SEWER PROJECT**

**PUMP STATION**  **FORCE MAIN**



# Questions?

