



City of Franklin, Tennessee
Board of Mayor and Aldermen

FY 2019-2028 Capital Investment Program

Special Work Session

March 5, 2019



City of Franklin, Tennessee

FY 2019-2028 Capital Investment Program

Agenda

- BOMA Top 10 Weighted and Non-Weighted Project Review**
- Process Moving Forward**
- Questions**





City of Franklin, Tennessee

FY 2019-2028 Capital Investment Program

BOMA Top 10 Weighted and Non-Weighted Projects

Weighted Ranking	Non-Weighted Ranking	Project Name
1	1	ST16017 - Long Ln and Old Peytonsville Rd Connector
2	4	SW16003 - 100 Block Battle Avenue Drainage Improvements
3	7	PK16013 - Greenway & Bridge (Harlinsdale to Chestnut Bend)
4	17	ST19004 - McEwen Drive Interchange Modifications
5	2	PK16020 - Bicentennial Park
6	10	ST16030 - Lewisburg Ave Sidewalk Improvements
7	12	FM16001 - New City Hall
8	5	FM19001 - 5th Ave Parking Lot
9	6	ST16011 - Mallory/N Royal Oaks & Liberty Intersection Imp.
10	19	PK16009 - Liberty Park Improvements IV
11	3	ST16014 - Franklin Rd & Mallory Station Rd Int Improvements
13	9	ST16006 - Jordan Road (Aspen Grove Dr-Mallory Ln)
26	8	PK16016 - Lockwood Glen Park



City of Franklin, Tennessee

FY 2019-2028 Capital Investment Program

BOMA TOP 10 WEIGHTED AND NON-WEIGHTED PROJECT REVIEW

ST16017 - LONG LN. AND OLD PEYTONSVILLE RD. CONNECTOR

WEIGHTED RANKING - 1

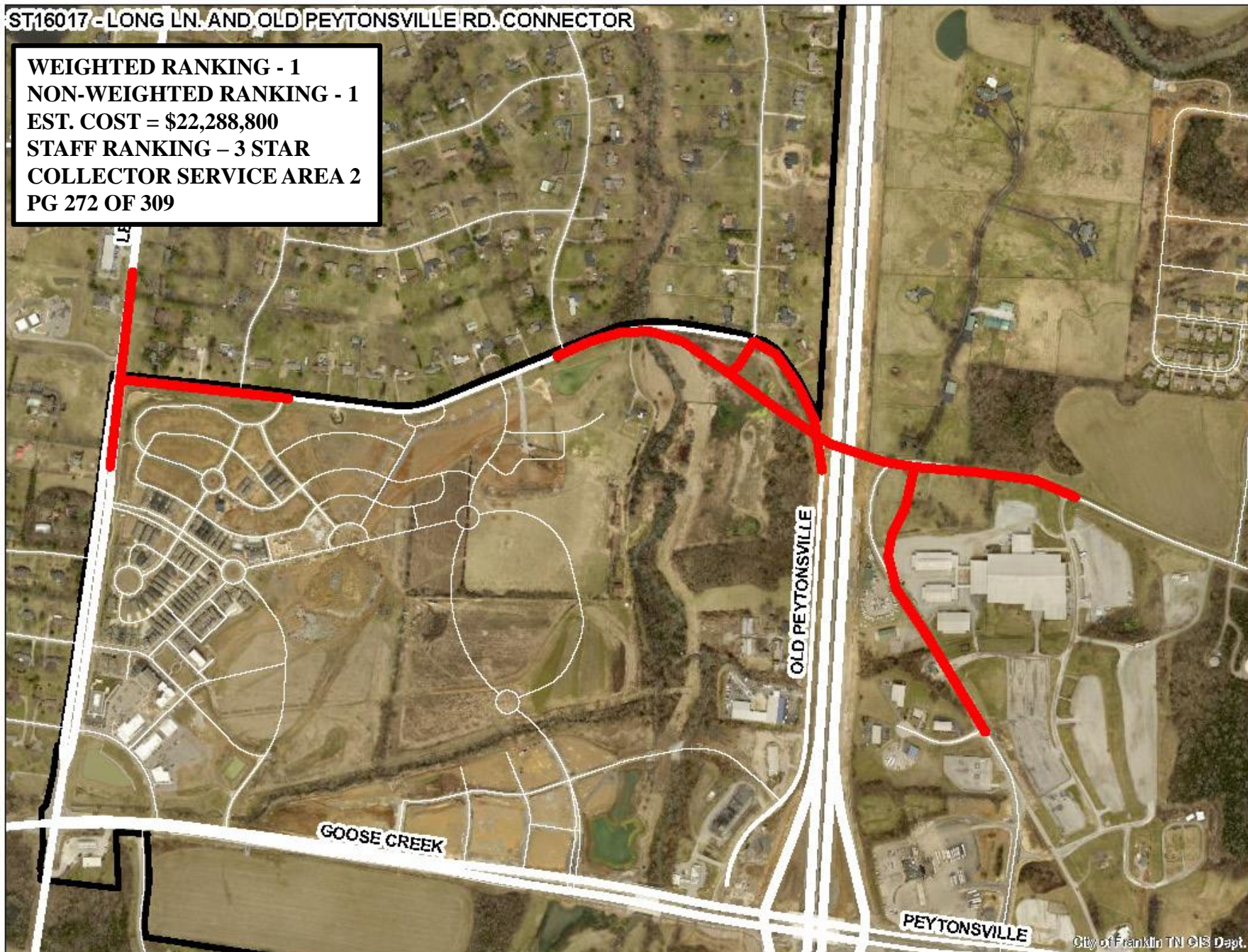
NON-WEIGHTED RANKING - 1

EST. COST = \$22,288,800

STAFF RANKING - 3 STAR

COLLECTOR SERVICE AREA 2

PG 272 OF 309



WEIGHTED RANKING - 2

NON-WEIGHTED RANKING - 4

EST. COST = \$1,850,000

STAFF RANKING - 2 STAR

PG 216 OF 309



WEIGHTED RANKING - 3
NON-WEIGHTED RANKING - 7

Page 62

Project Name:

Greenway & Bridge (Harlinsdale Farm to Chestnut Bend)

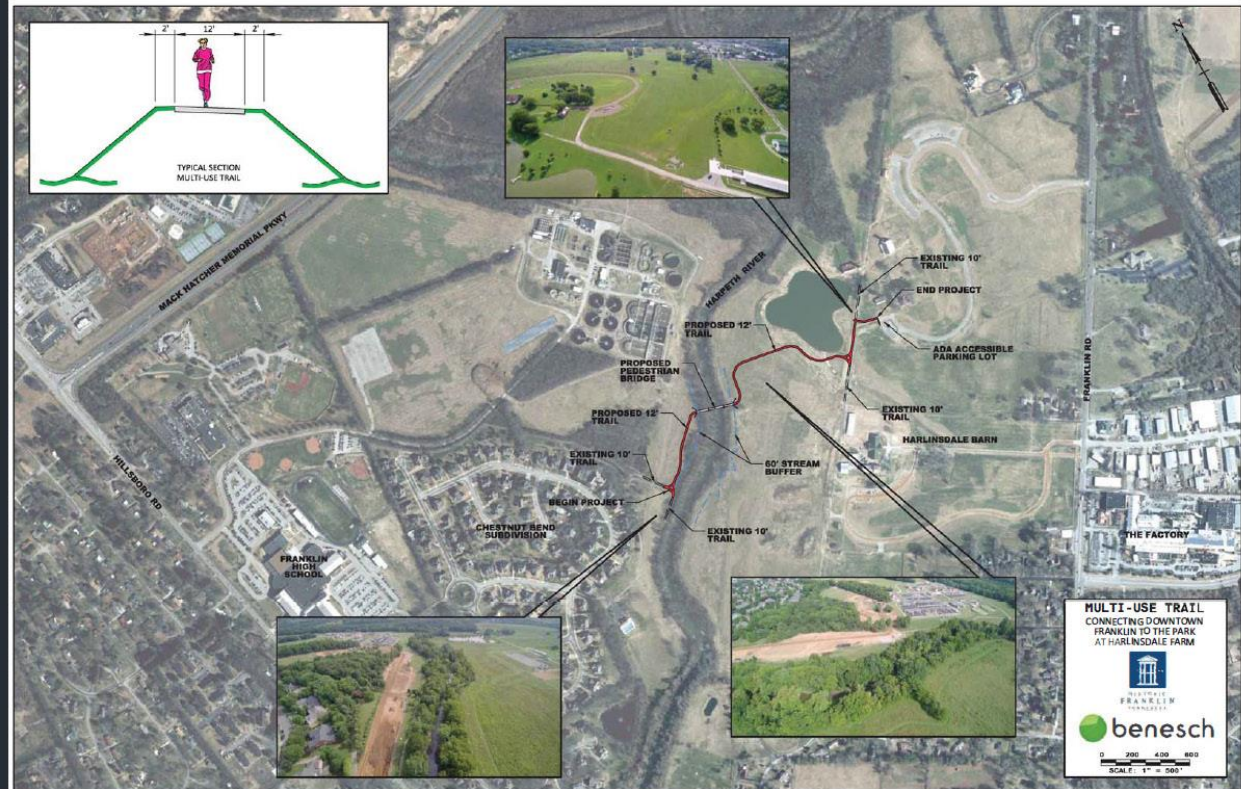
4-Star Project

Estimated Total Cost: \$3,032,960

Park16013 – Greenway & Bridge (Harlinsdale to Chestnut Bend)

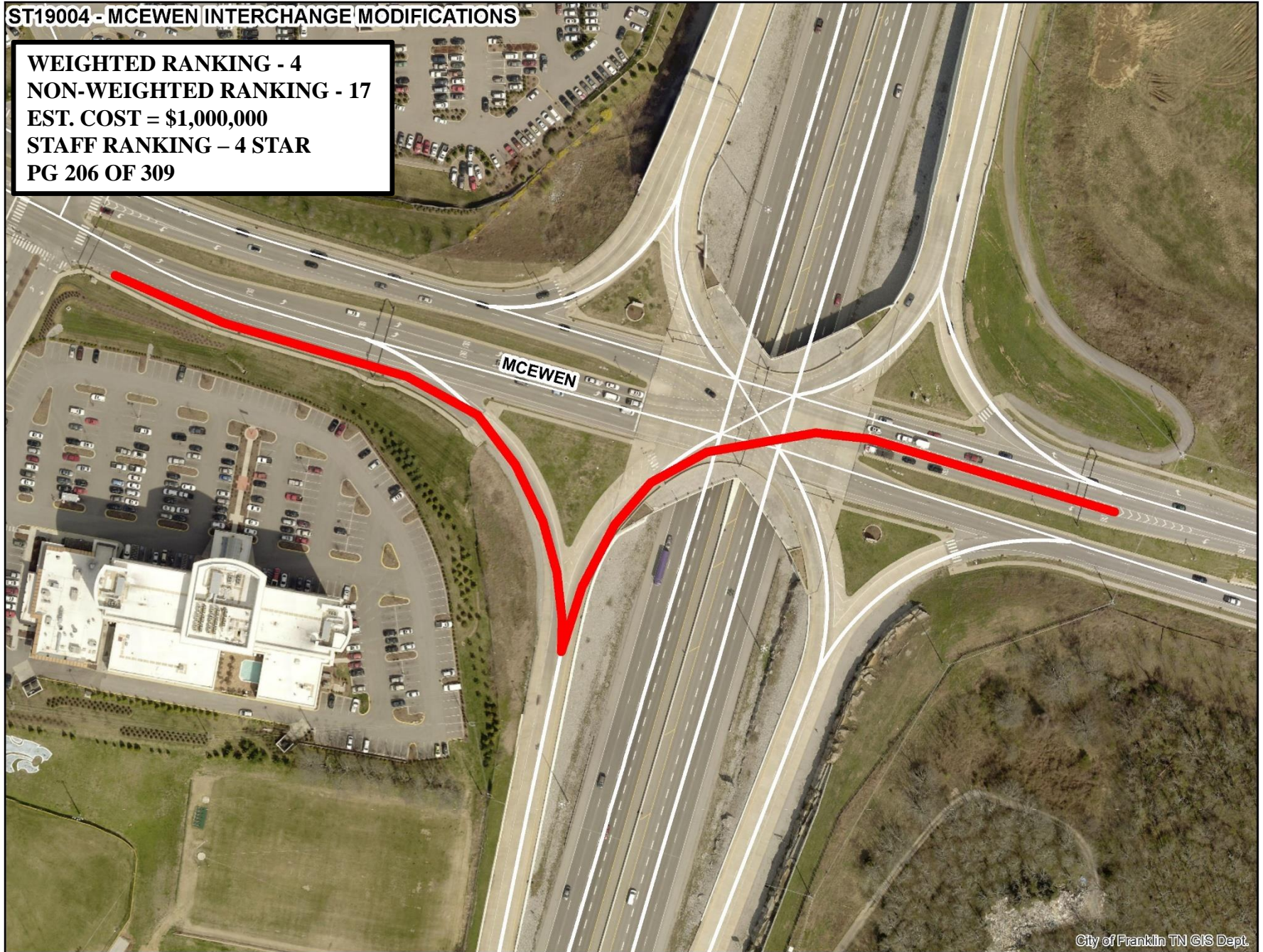


Harlinsdale Farm Master Plan



ST19004 - MCEWEN INTERCHANGE MODIFICATIONS

WEIGHTED RANKING - 4
NON-WEIGHTED RANKING - 17
EST. COST = \$1,000,000
STAFF RANKING - 4 STAR
PG 206 OF 309



WEIGHTED RANKING - 5
NON-WEIGHTED RANKING - 2

Page 74

Project Name: Bicentennial Park

4-Star Project

Estimated Total Cost: \$4,220,000; (Pavilion Area & Parking: \$1,905,000)

PK16020 — BICENTENNIAL PARK



ST16030 - LEWISBURG AVE. SIDEWALK IMPROVMENTS

WEIGHTED RANKING - 6

NON-WEIGHTED RANKING - 10

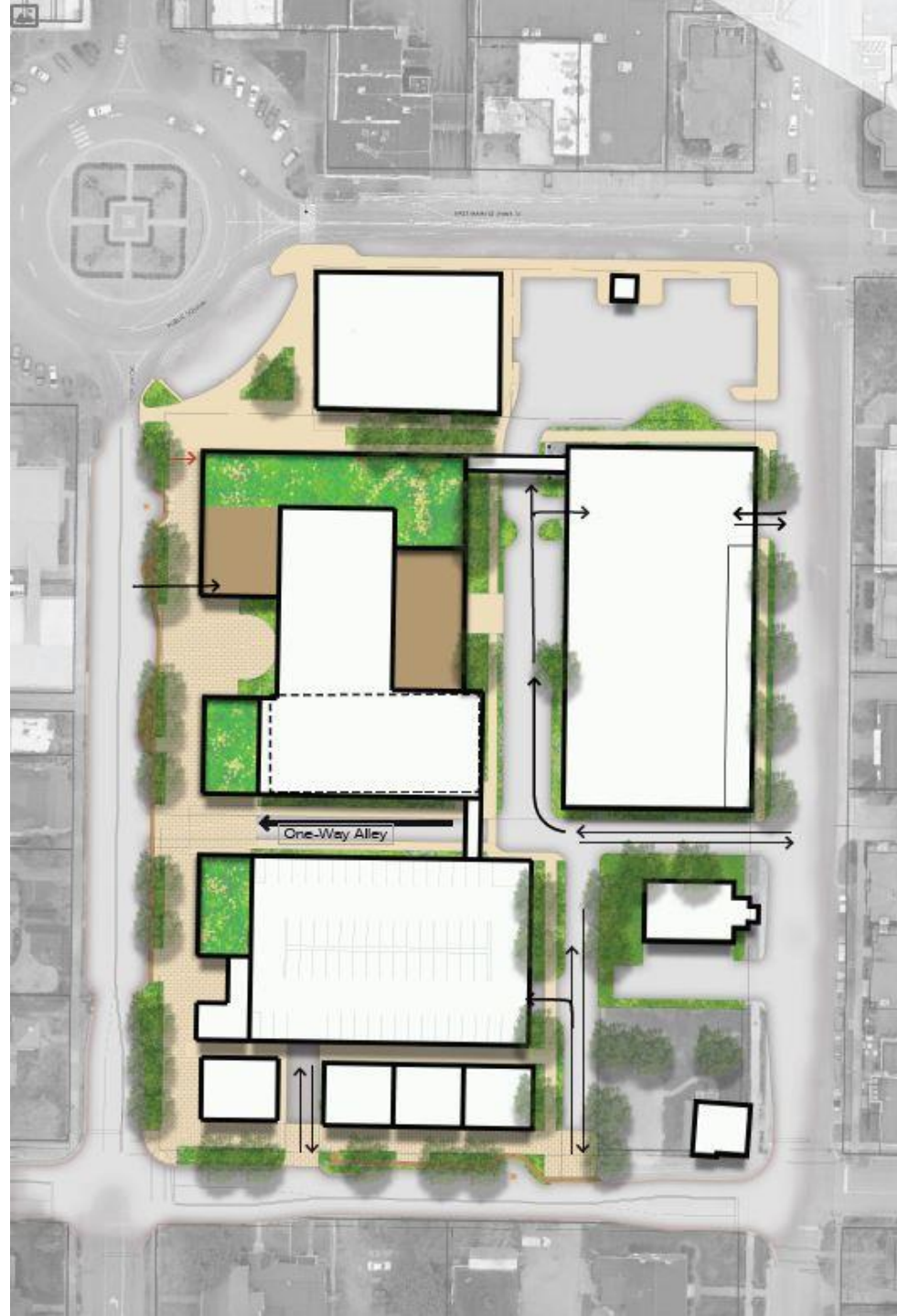
EST. COST = \$1,162,260

STAFF RANKING - 4 STAR

PG 290 OF 309



WEIGHTED RANKING - 7
NON-WEIGHTED RANKING - 12
FM16001 – NEW CITY HALL
EST. COST = \$24,100,000
STAFF RANKING – 2 STAR
PG 28 OF 309

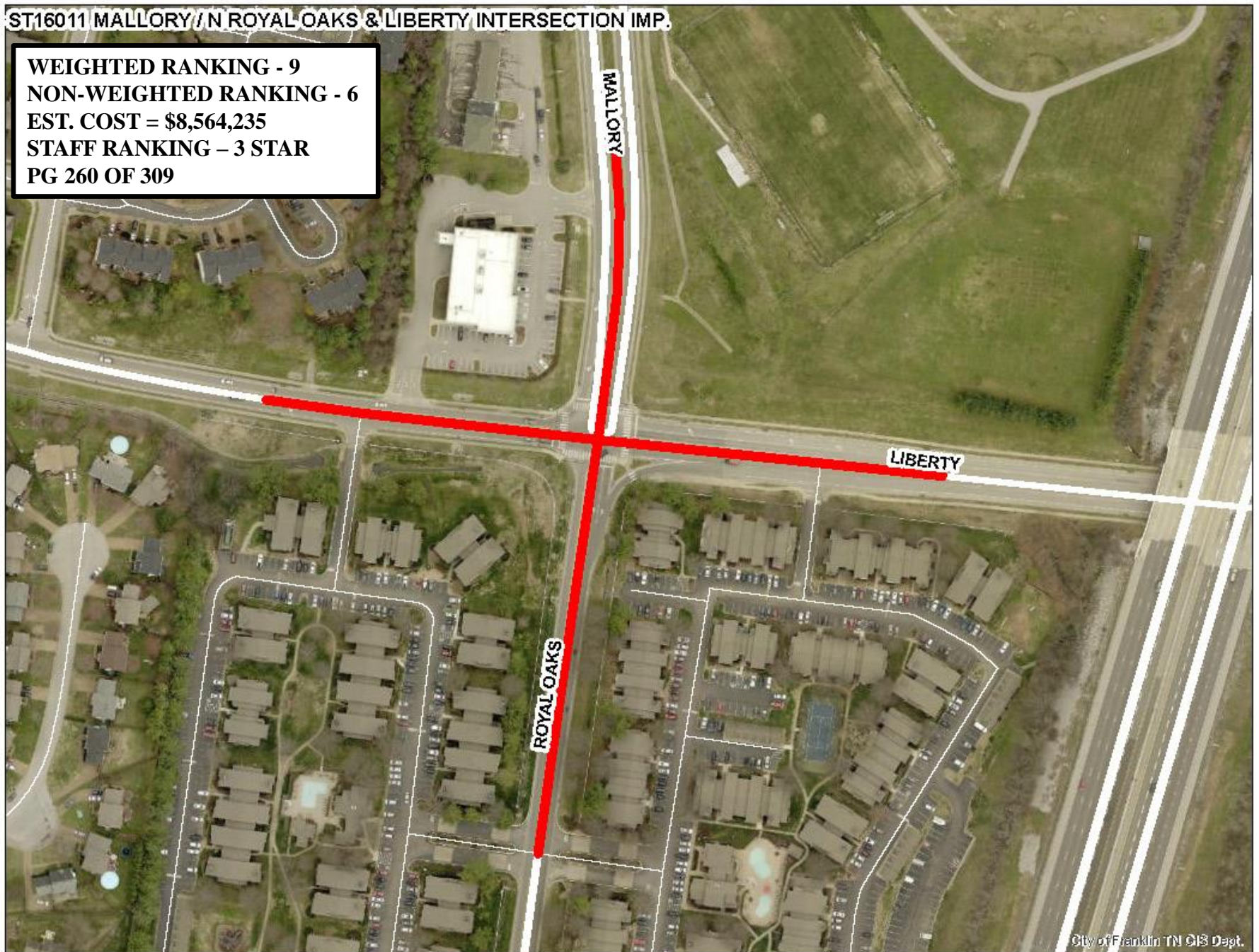


WEIGHTED RANKING - 8
NON-WEIGHTED RANKING - 5
5TH AVE PARKING LOT
EST. COST = \$500,000
STAFF RANKING – 4 STAR
PG 30 OF 309



ST16011 MALLORY / N ROYAL OAKS & LIBERTY INTERSECTION IMP.

WEIGHTED RANKING - 9
NON-WEIGHTED RANKING - 6
EST. COST = \$8,564,235
STAFF RANKING - 3 STAR
PG 260 OF 309



WEIGHTED RANKING - 10
NON-WEIGHTED RANKING - 19

Page 56

Project Name:

Liberty Park Improvements

3-Star Project
Estimated Total Cost: \$5,400,000



**Liberty Park
Master Plan**



ST16014 - FRANKLIN RD. & MALLORY STATION RD. INT. IMPROVEMENTS

WEIGHTED RANKING - 11

NON-WEIGHTED RANKING - 3

EST. COST = \$6,740,000

STAFF RANKING - 4 STAR

PG 266 OF 309



ST16006 - JORDAN RD. (ASPEN GROVE DR. - MALLORY LN.)

WEIGHTED RANKING - 13
NON-WEIGHTED RANKING - 9
EST. COST = \$4,670,480
STAFF RANKING - 4 STAR
COLLECTOR SERVICE AREA 4
PG 250 OF 309



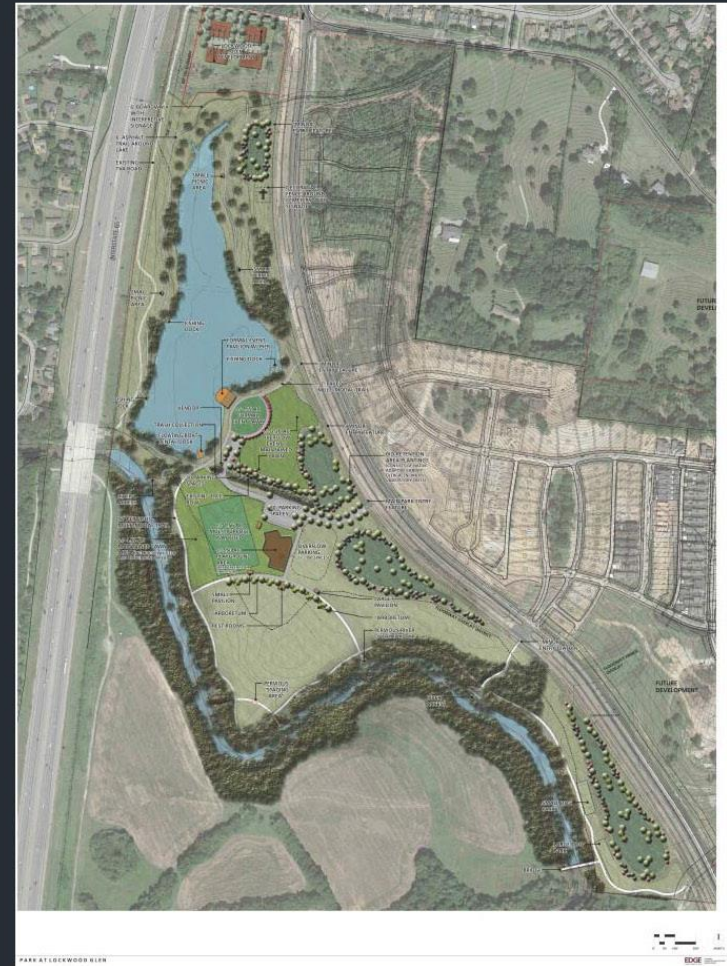
WEIGHTED RANKING - 26
NON-WEIGHTED RANKING - 8

Page 66

Project Name:

Lockwood Glen - Park

4-Star Project
Estimated Total Cost: \$5,530,000





City of Franklin, Tennessee
FY 2019-2028 Capital Investment Program

Process Moving Forward



City of Franklin, Tennessee

FY 2019-2028 Capital Investment Program

Next Steps

Staff to provide BOMA with draft funding plan. The funding plan will be based on the following:

- **BOMA Priority Ranking**
- **Projects with active and potential grant opportunities and/or partnerships**
EX: FFSD (Freedom Middle/Poplar Grove); Greenways (Aspen Grove to Mack Hatcher; Mack Hatcher Parkway Multi-Use Trail (Franklin Rd – Hillsboro Rd.)
- **Projects with existing obligations**
EX: McEwen Phase 5; USACE – Home Raising Project
- **Projects needed based on development demand**
EX: Carlisle Ln (SR96W-Future Mack Hatcher Pkwy)
- **Needed Infrastructure Projects**
EX: Maplewood Stormwater Project; S. Margin St. Infrastructure Upgrades



City of Franklin, Tennessee
FY 2019-2028 Capital Investment Program

Questions