

**NOTE:**  
IMAGES DO NOT ENTITLE THE DEVELOPMENT TO A PARTICULAR ARCHITECTURAL  
STYLE, FACADE, OR ELEMENT. ALL ARCHITECTURE MUST MEET REQUIREMENTS OF THE  
ZONING ORDINANCE AT TIME OF SITE PLAN SUBMITTAL. ALL ELEVATIONS MUST MEET  
THE REQUIREMENTS OF SECTION 5.3.6 OF THE ZONING ORDINANCE AT TIME OF SITE  
PLAN UNLESS AN MOS HAS BEEN SPECIFICALLY REQUESTED WITH THIS SUBMITTAL.

1. **CONSTRUCTION TYPES:**  
Multifamily likely Type III or V; garage likely Type I or II; Buildings sprinkled NFPA 13 or 13R, Enclosed Garage NFPA 13 / Open Garage un sprinkled.
2. **SPRINKLERS**  
Condo and Garage likely Type I or Type II; Buildings and Garage sprinkled NFPA 13.
3. **The Hotels (A2 and R1 Uses) likely Type 1B construction.**

NOTE:  
BEARINGS SHOWN HEREON ARE BASED ON THE  
TENNESSEE STATE PLANE COORDINATE SYSTEM,  
ZONE 5301, FIPSZONE 4100; NAD 83 DATUM.

CITY OF FRANKLIN # 6909

**AUREUM**  
FOR  
**SS-CH FRANKLIN, LLC**

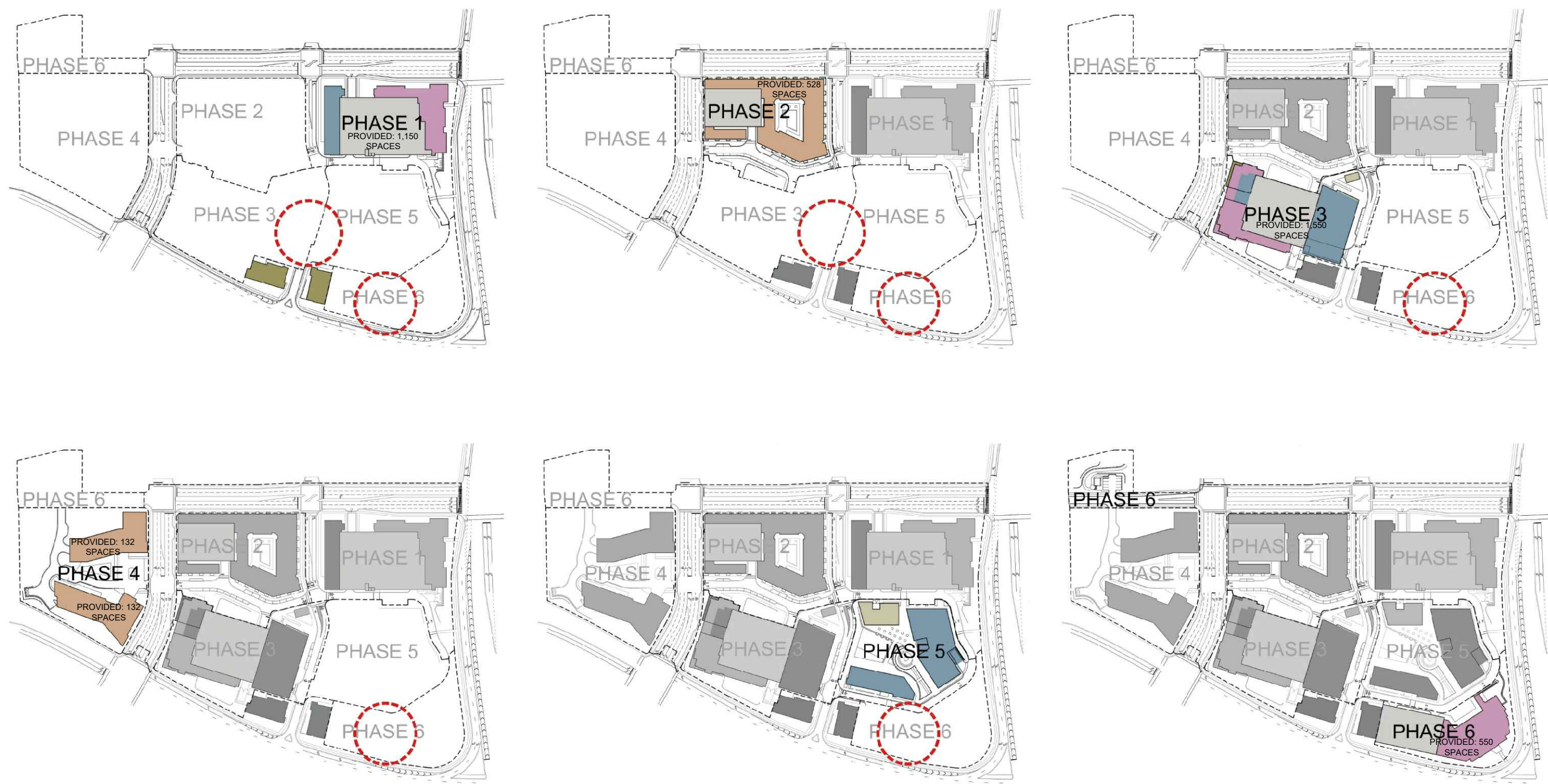
CITY OF FRANKLIN, WILLIAMSON COUNTY, TENNESSEE

JOB NO.	WK ORDER				DATE:	DESCRIPTION:
18-106	1221	-	-	-	FEBRUARY 11, 2019	REV.
DESIGNED:	WLH	-	-	-		
DRAWN:	ZDS	-	-	-		
SCALE:	NOT TO SCALE	-	-	-		

# MASSING

## A1.0

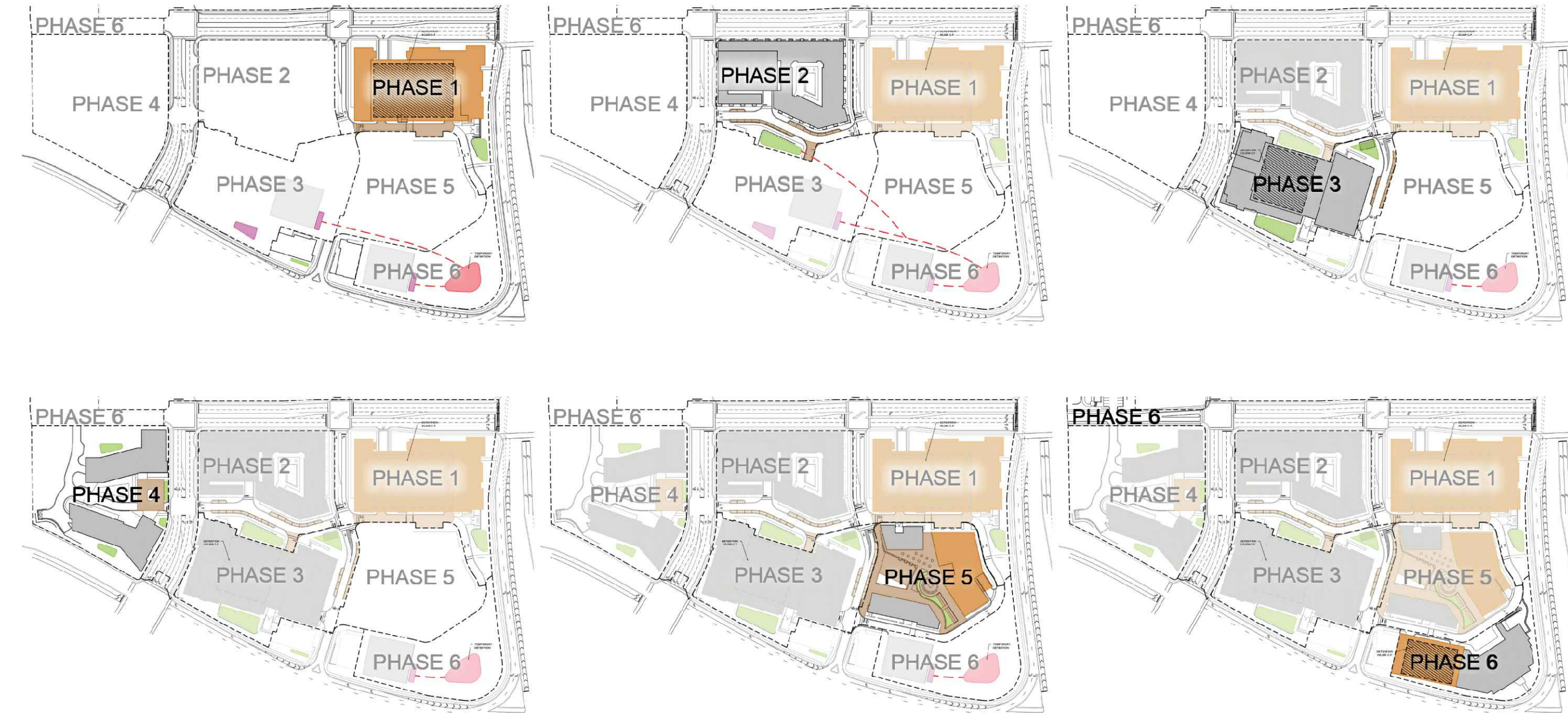




Temporary Surface Parking - Temporary surface parking to be allowed during overall development build out. Temporary surface parking to be screened per section 5.4.5(3)(a)(b)(ii) of the Zoning Ordinance.

### ANTICIPATED DEVELOPMENT PHASING

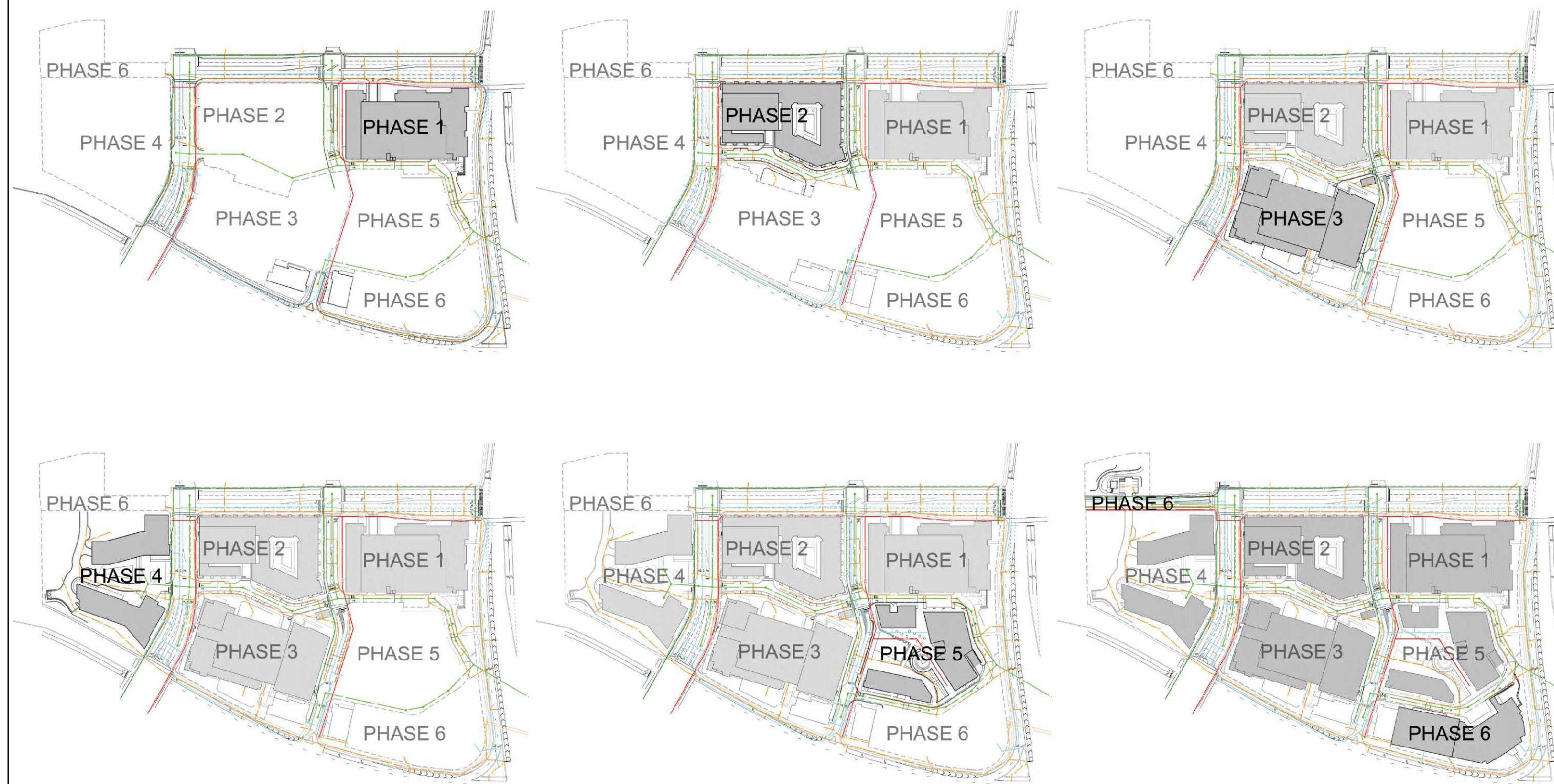
ANTICIPATED DEVELOPMENT PHASING NOTE:  
MASTER DEVELOPER RESERVES THE RIGHT TO ADJUST PHASING BASED ON MARKET CONDITIONS. PHASING IS SUBJECT TO CHANGE BEYOND WHAT IS SHOWN PRELIMINARILY WITH THE PUD PLANS. SUCH CHANGES MAY RESULT IN THE NEED TO HAVE THE APPROPRIATE BODY RE-APPROVE THE DEVELOPMENT PLAN.



KEY  
BIORETENTION  
PAVERS  
GREEN ROOF  
TEMPORARY DETENTION  
DETENTION/UNDERGROUND DETENTION  
TEMPORARY BIORETENTION

STORMWATER NOTE:  
GREEN INFRASTRUCTURE PRACTICES ARE SHOWN FOR DESIGN INTENT ONLY AND ARE NOT INTENDED TO REPRESENT THE FINAL DESIGN. IT IS ANTICIPATED THAT A WIDE VARIETY OF PRACTICES WILL BE USED FOR THIS DEVELOPMENT INCLUDING ALL GREEN INFRASTRUCTURE PRACTICES LISTED IN TABLE 5 OF SECTION 1.3.1 OF THE CITY OF FRANKLIN BEST MANAGEMENT PRACTICES STORMWATER MANAGEMENT MANUAL AS WELL AS ALTERNATE BMPs SUPPORTED BY CITY STAFF INCLUDING RAINWATER CISTERNS, WATER REUSE, AND PROPRIETARY TREATMENT DEVICES. ADDITIONAL METHODS MAY BE PROPOSED AT SITE PLAN SUBMITTALS, AND ARE UNDERSTOOD TO NEED STAFF APPROVAL PRIOR TO IMPLEMENTATION.

### ANTICIPATED DEVELOPMENT STORMWATER PHASING



### ANTICIPATED DEVELOPMENT UTILITY PHASING

UTILITY NOTE:  
UTILITY PHASING & LOCATIONS SHOWN ARE CONCEPTUAL. SPECIFIC ALIGNMENT & PHASING TO BE COORDINATED AND APPROVED WITH THE UTILITY PROVIDERS.

NOTE:  
BEARINGS SHOWN HEREON ARE BASED ON THE  
TENNESSEE STATE PLANE COORDINATE SYSTEM,  
ZONE 5301, FIPSSZONE 4100; NAD 83 DATUM.

RAGAN SMITH  
LAND PLANNERS • CIVIL ENGINEERS  
LANDSCAPE ARCHITECTS • SURVEYORS  
Chattanooga 423-944-8591  
Nashville 615-244-8591  
Murfreesboro 615-546-6050  
ragsmith.com



CITY OF FRANKLIN # 6909

AUREUM  
FOR  
SS-CH FRANKLIN, LLC

CITY OF FRANKLIN, WILLIAMSON COUNTY, TENNESSEE

JOB NO.	WK. ORDER	DESIGNED	DRAWN	SCALE	DATE	REV.	DATE	PER	DESCRIPTION
18-106	1221	WLH	ZDS	NOT TO SCALE	2019.04.04	1	2019.04.04	PER	CITY COMMENT

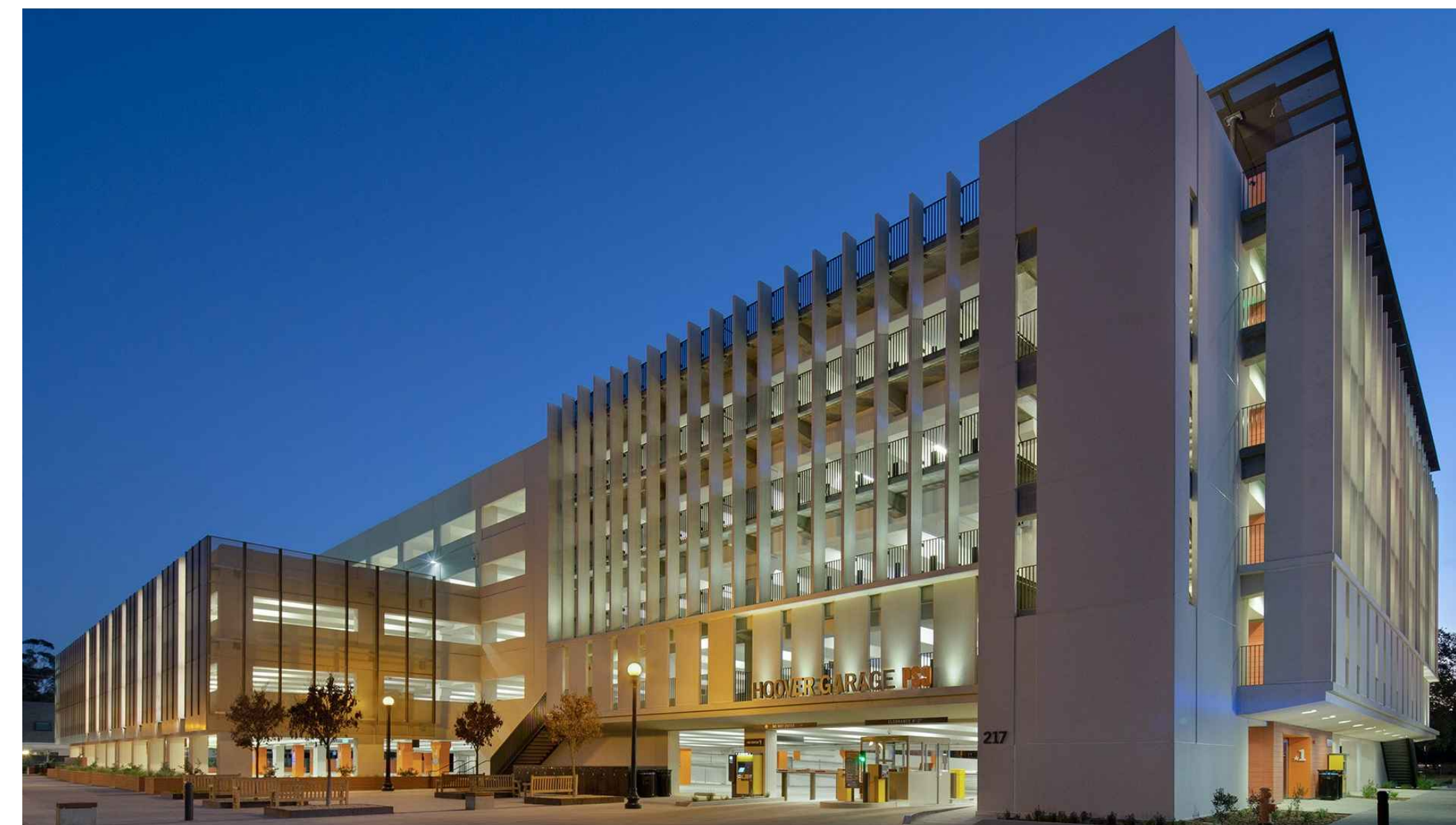
DEVELOPMENT  
PHASING

A1.1









NOTES:  
IMAGERY DOES NOT ENTITLE THE DEVELOPMENT TO A PARTICULAR ARCHITECTURAL STYLE, FACADE, OR ELEMENT. ALL ARCHITECTURE MUST MEET REQUIREMENTS OF THE ZONING ORDINANCE AT TIME OF SITE PLAN SUBMITTAL. THE IMAGERY SHOWN IS A REPRESENTATION OF THE STYLE AND CHARACTER OF THE ARCHITECTURAL DESIGN ENVISIONED FOR THE DEVELOPMENT. THE IMAGERY SHOWS A VARIETY OF BUILDING MATERIALS THAT ARE INCLUDED IN, AND IN ADDITION TO THE ZONING OVERLAY. PARKING GARAGES SHALL HAVE 0' MINIMUM BUILDING SETBACK TO INTERNAL DRIVES (AS MEASURED FROM FACE OF CURB).

NOTE:  
BEARINGS SHOWN HEREON ARE BASED ON THE  
TENNESSEE STATE PLANE COORDINATE SYSTEM,  
ZONE 5301, FIPSZONE 4100; NAD 83 DATUM.

RAGAN SMITH

LAND PLANNERS • CIVIL ENGINEERS  
LANDSCAPE ARCHITECTS • SURVEYORS

**Chattanooga**  
423-490-9400

**Nashville**  
615-244-8591

**Murfreesboro**  
615-546-6050

[ragansmith.com](http://ragansmith.com)



CITY OF FRANKLIN # 6909

**AUREUM**  
FOR  
**SS-CH FRANKLIN, LLC**

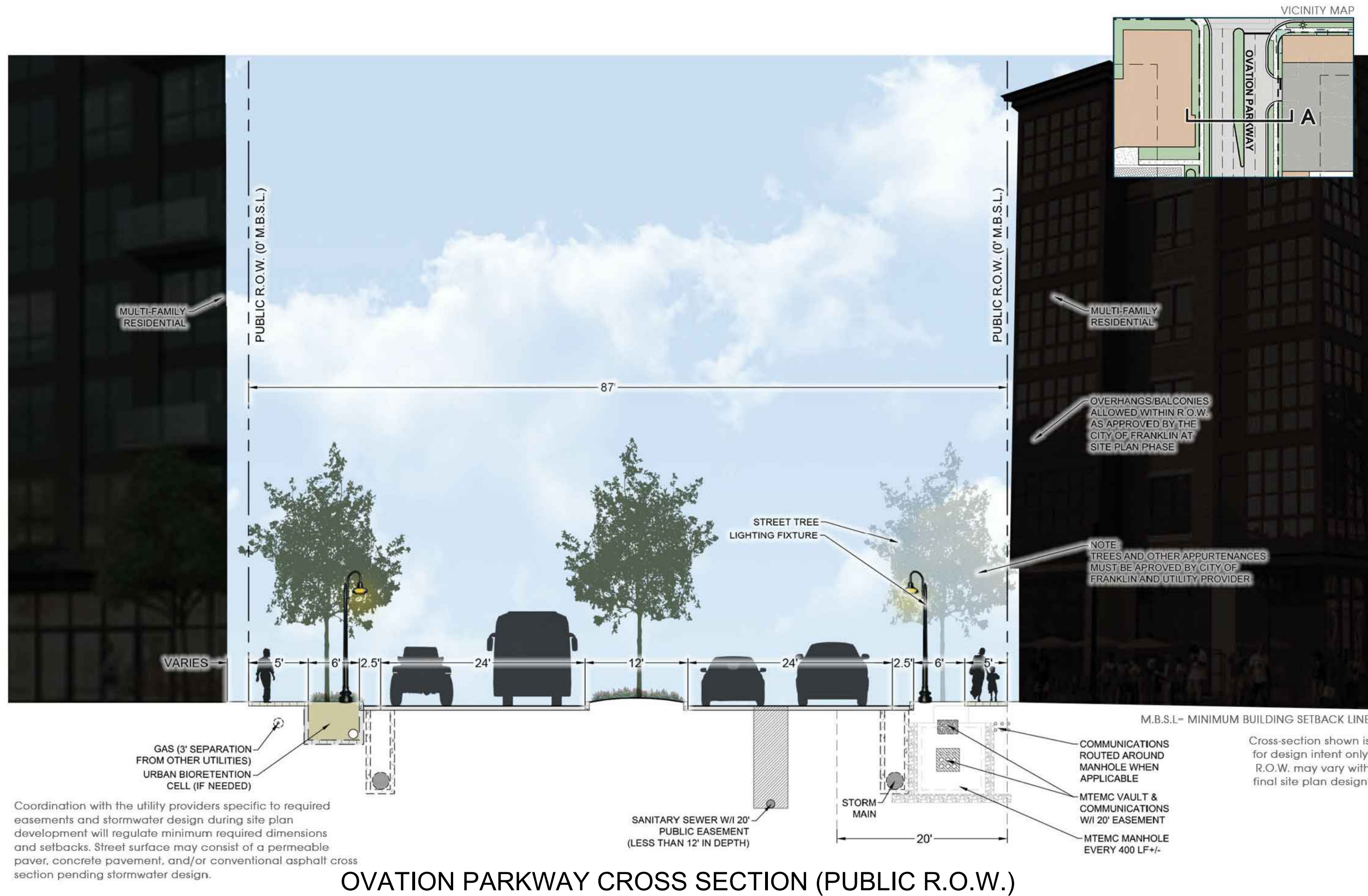
CITY OF FRANKLIN, WILLIAMSON COUNTY, TENNESSEE

JOB NO.	WK. ORDER								
18-106	1221								
DESIGNED:	WJH								
DRAWN:	ZDS								
SCALE:	NOT TO SCALE								
DATE:	FEBRUARY 11, 2019	REV.	DATE:	DESCRIPTION:					
		#							

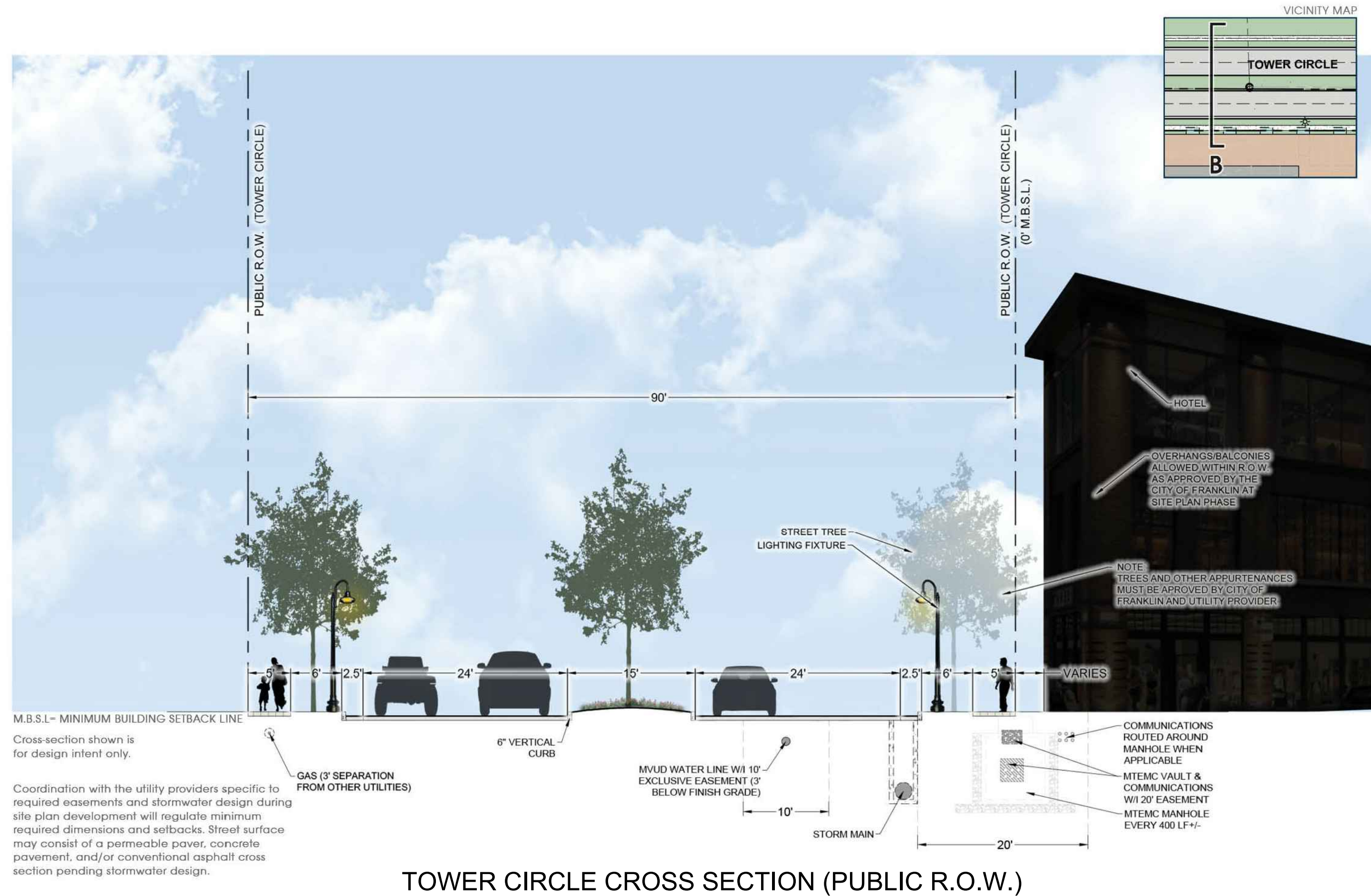
GARAGE FACADE  
IMAGERY

### A1.3

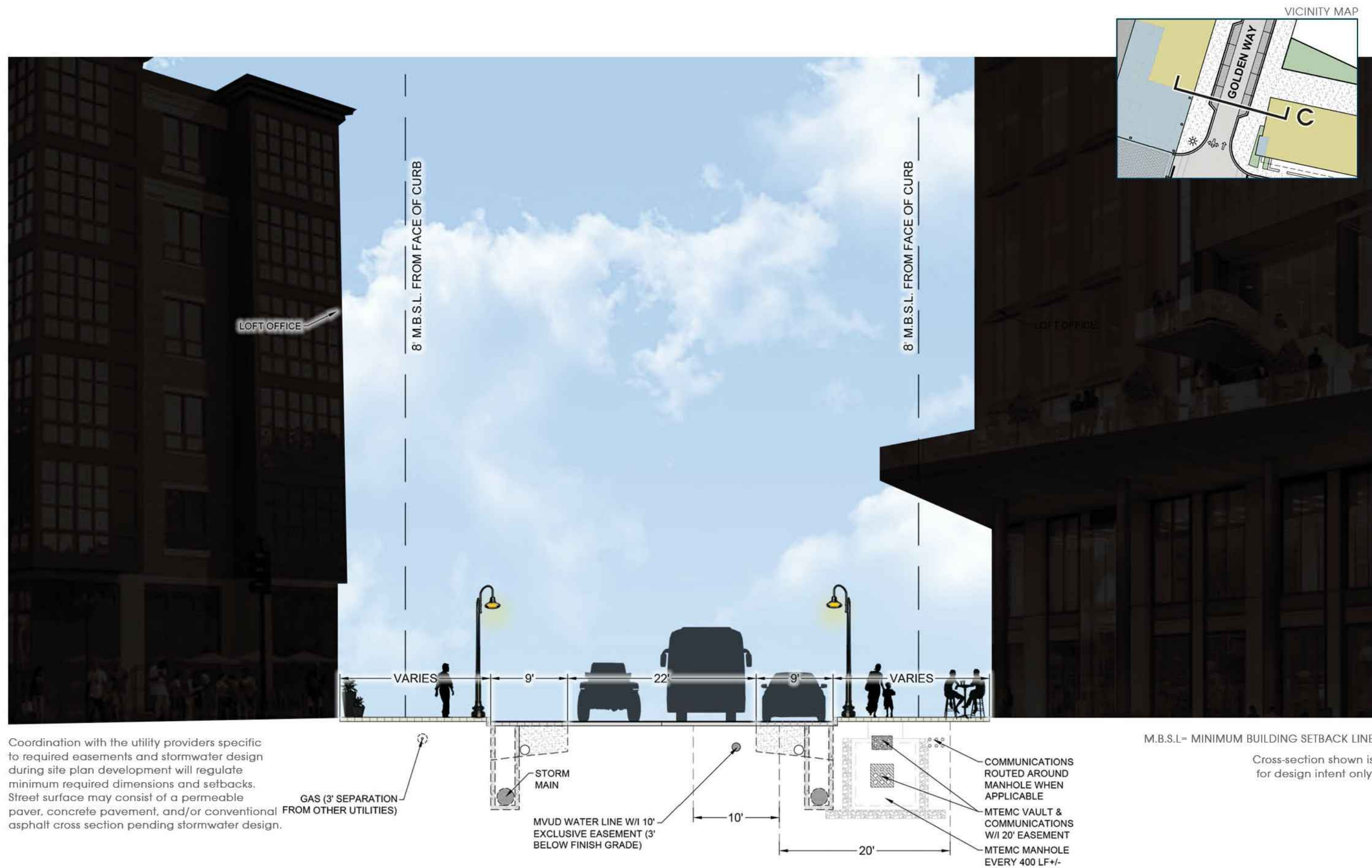




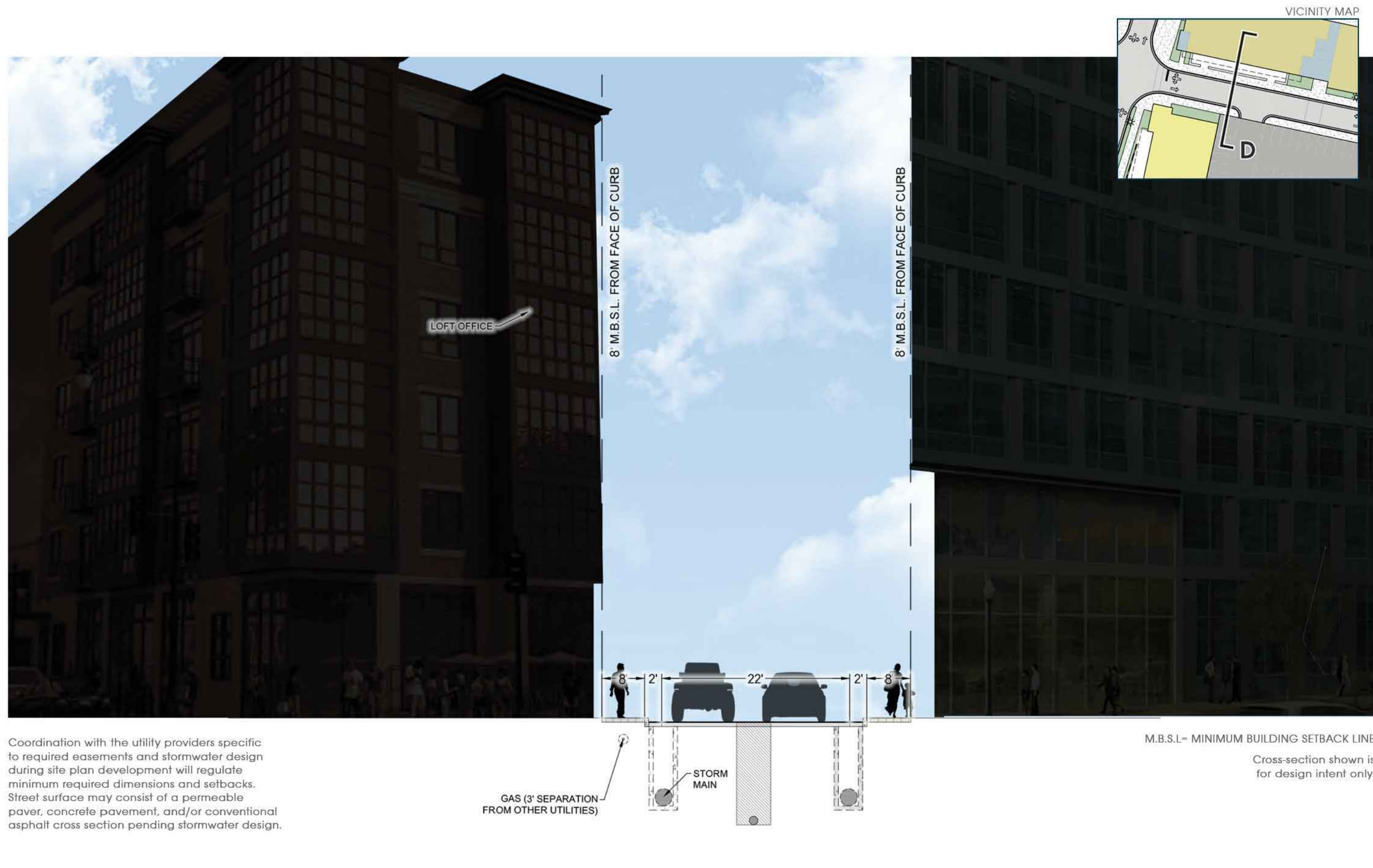
Ovation Parkway Cross Section (Public R.O.W.)



Tower Circle Cross Section (Public R.O.W.)



Aureum Trail [South of Golden Way] & Golden Way Cross Section (Private)



Aureum Trail [North of Golden Way] Cross Section (Private)

NOTE:  
CROSS-SECTIONS SHOWN ARE FOR DESIGN INTENT ONLY. MAY VARY WITH FINAL SITE PLAN DESIGN.

NOTE:  
BEARINGS SHOWN HEREON ARE BASED ON THE TENNESSEE STATE PLANE COORDINATE SYSTEM, ZONE 5301, FIPSONE 4100; NAD 83 DATUM.

RAGAN SMITH  
LAND PLANNERS • CIVIL ENGINEERS  
LANDSCAPE ARCHITECTS • SURVEYORS  
Nashville  
615-244-8891  
Chattanooga  
423-490-9400  
Murfreesboro  
615-546-6060  
ragansmith.com



CITY OF FRANKLIN # 6909

AUREUM  
FOR  
SS-CH FRANKLIN, LLC

CITY OF FRANKLIN, WILLIAMSON COUNTY, TENNESSEE

WK. ORDER	DESIGNED	DRAWN	SCALE	DATE	REV.	DATE	DESCRIPTION
18-106	WLH	ZDS	NOT TO SCALE	2019.04.04	1	2019.04.04	PER CITY COMMENT
1221							

CROSS SECTIONS

A1.4