

CITY OF FRANKLIN EMPLOYEE COMMUTE SURVEY RESULTS

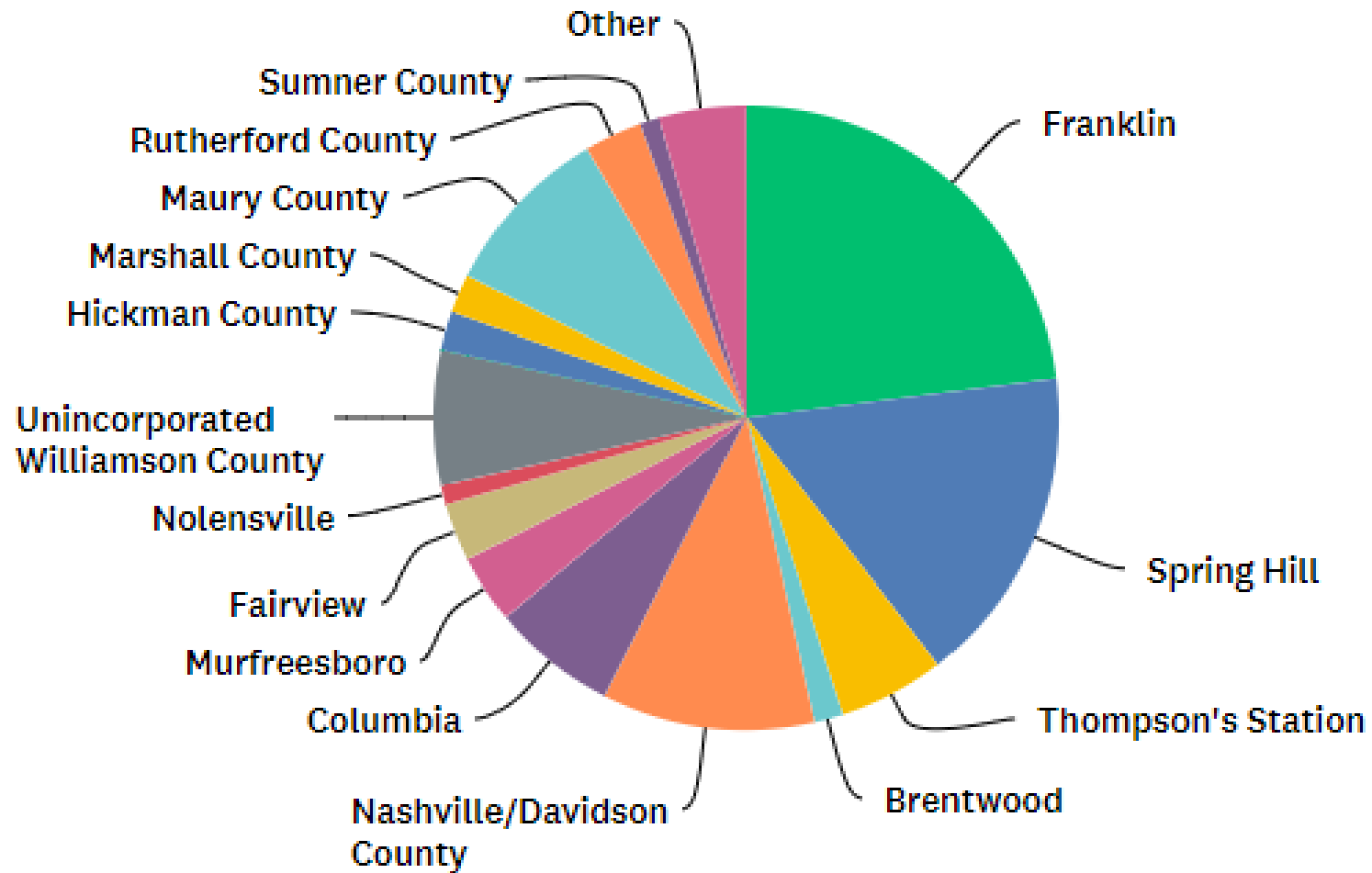
200 RESPONSES
AUGUST-SEPTEMBER 2018



1. Where do you live?

<u>Cities</u>	<u>2008</u>	<u>2018</u>
Franklin	30.0%	23.0%
Brentwood	3.0%	1.5%
Nashville	4.0%	11.0%
Thompson Station	5.5%	5.5%
Spring Hill	20.0%	16.5%
Columbia	5.0%	6.5%
Murfreesboro	4.5%	3.5%
Fairview	4.5%	3.0%
Other	23.5%	29.5%

Where do you live?



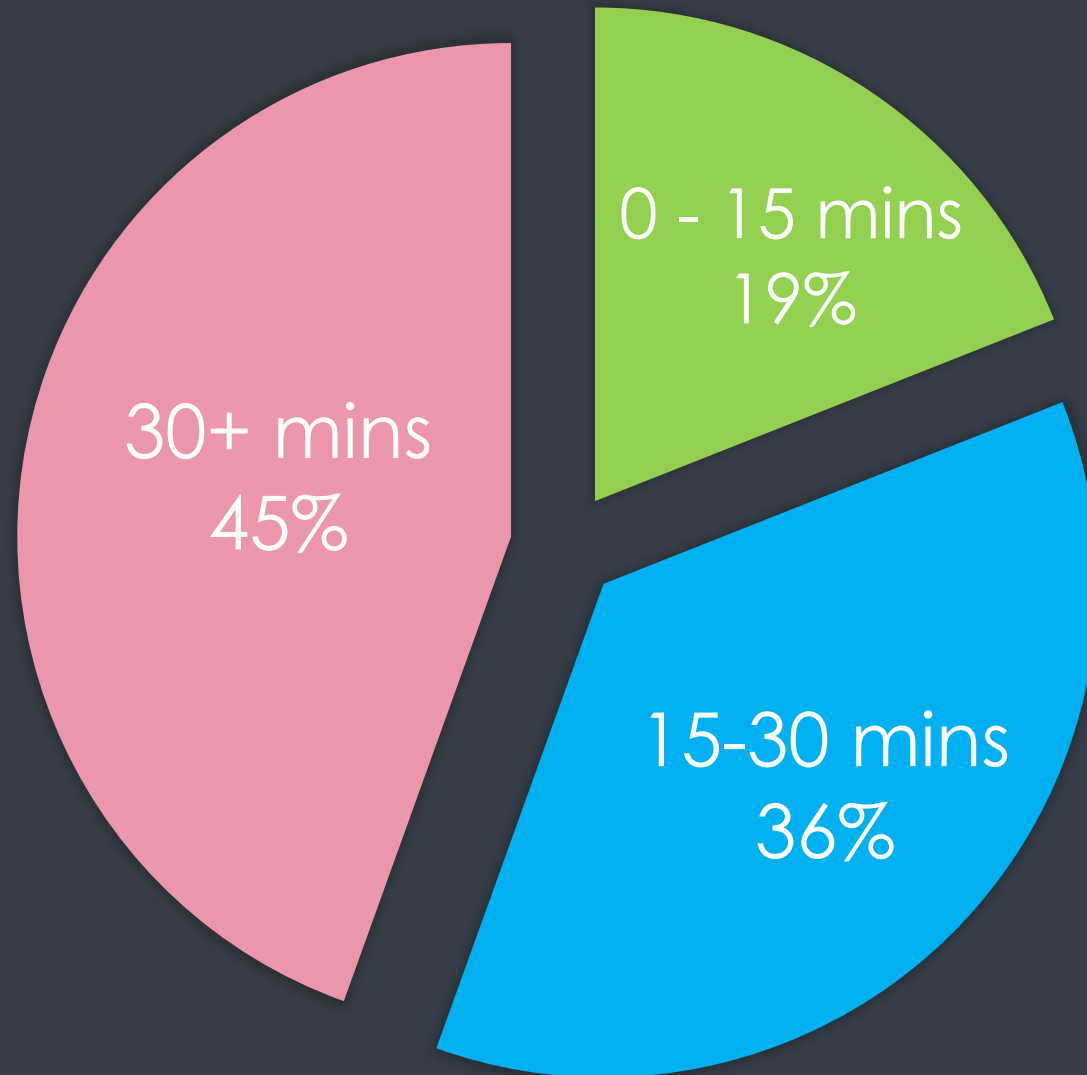
Please indicate the number of miles you travel to get to work (one-way).

<u>Distance</u>	<u>2008</u>	<u>2018</u>
0-2 miles	7.0%	6.0%
2-5 miles	17.0%	11.0%
5-10 miles	7.0%	8.5%
10-15 miles	19.0%	16.0%
15-20 miles	14.0%	22.5%
20-30 miles	19.0%	19.5%
30+ miles	17.0%	16.5%

Please estimate the amount of time it takes you to get to work (one-way).

<u>Time</u>	<u>2008</u>	<u>2018</u>
0-5 Minutes	5.0%	2.5%
5-10 Minutes	12.5%	10.0%
10-15 Minutes	12.5%	6.5%
15-20 Minutes	8.5%	9.0%
20-25 Minutes	14.0%	14.0%
25-30 Minutes	10.0%	13.5%
30-35 Minutes	7.5%	12.5%
35-40 Minutes	7.5%	8.5%
40-45 Minutes	11.5%	9.0%
45+ Minutes	11.0%	14.5%

Please estimate the amount of time it takes you to get to work (one-way).



Are you currently satisfied with the time it takes you to get to work?

<u>Answer Options</u>	<u>2008</u>	<u>2018</u>
Yes	65.8%	60.5%
No	18.3%	32%
No Preference	15.8%	7.5%

Do you usually travel to work between 6-9 am?

<u>Answer Options</u>	<u>2008</u>	<u>2018</u>
Yes	70.3%	72.4%
No	29.7%	27.6%

*98% OF CITY EMPLOYEES DRIVE ALONE TO WORK

NATIONAL AVERAGES:

- 76% OF AMERICANS DRIVE ALONE TO WORK
- 9% CARPOOL TO WORK
- 5% USE PUBLIC TRANSIT
- 5% WORK FROM HOME
- 3.5% WALK OR BIKE

*AVERAGE COMMUTE TIME IS 26 MINUTES

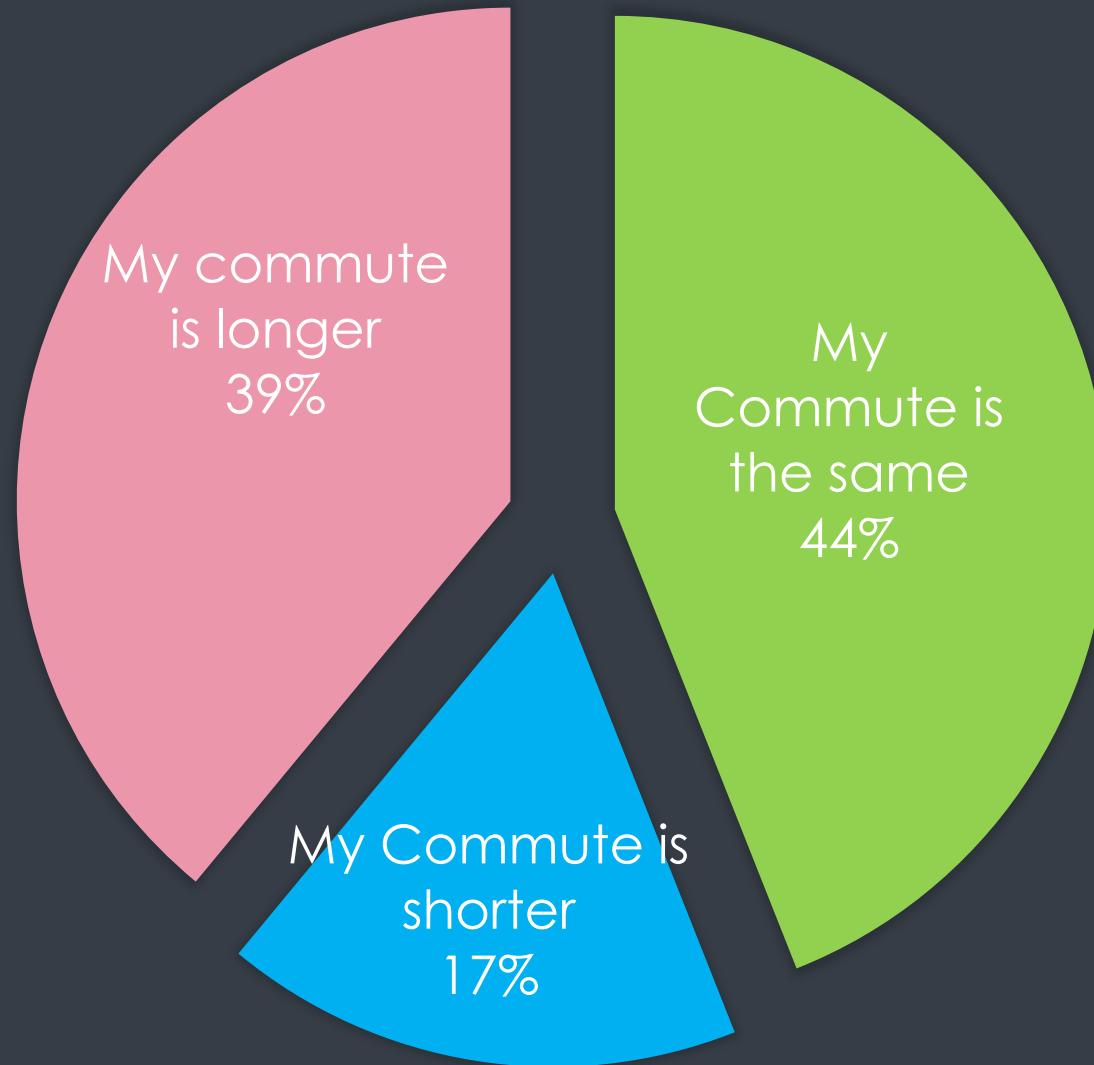
Are you currently satisfied with how you get to work?

<u>Answer Options</u>	<u>2008</u>	<u>2018</u>
Yes	78.5%	85.9%
No	11.2%	8.0%
No Preference	10.2%	6.0%

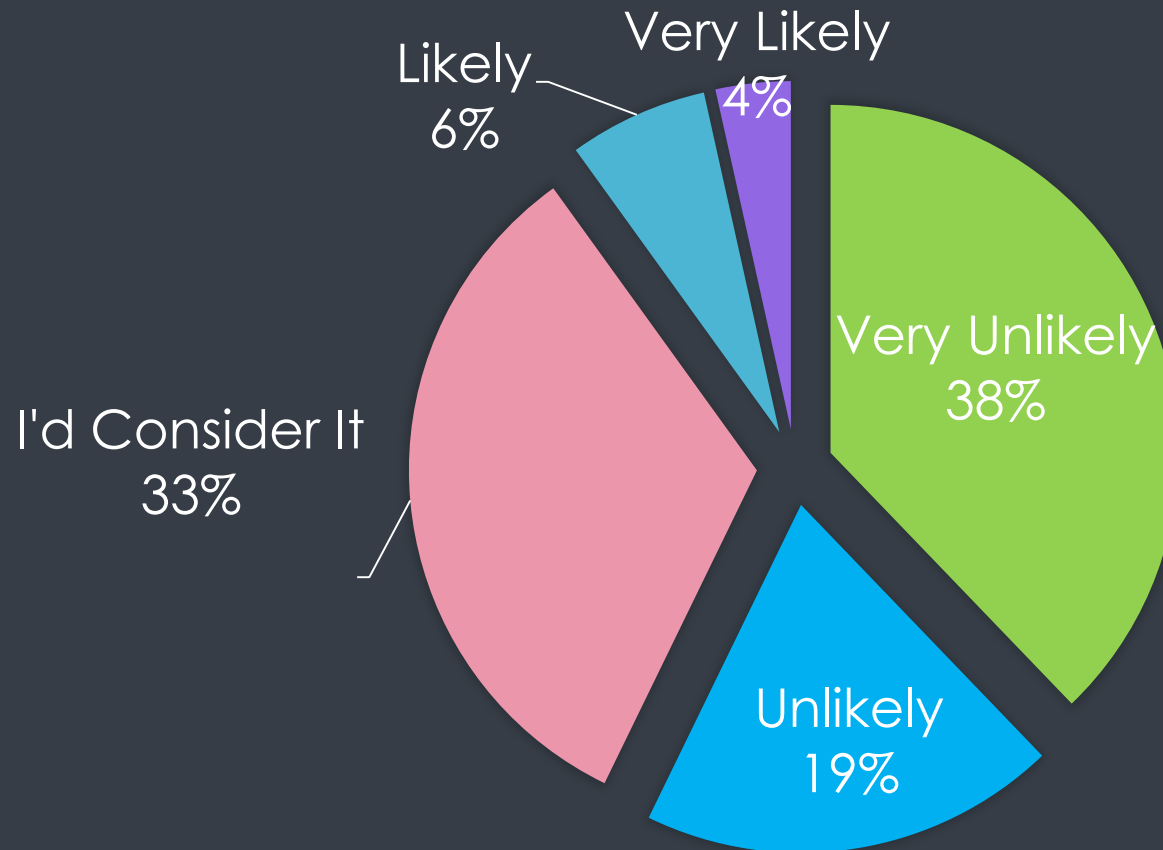
Which if any of the following would encourage you to take an alternative form of transportation?

<u>Answer Options</u>	<u>2008</u>	<u>2018</u>
Vanpool/Carpool Incentives	17.0%	22.3%
Infrastructure Improvements like sidewalks and bike lanes	19.1%	10.9%
Increased transit service	16.3%	23.4%
Subsidizing Bicycle Purchases	11.3%	NA
Availability of Locker Room/Showers	16.3%	NA
Telecommuting Options	25.5%	35.3%
Incentives are unnecessary	39.0%	20.7%
Other Incentives (please specify)		

SINCE YOU BEGAN WORKING FOR THE CITY, HAS YOUR COMMUTE CHANGED?



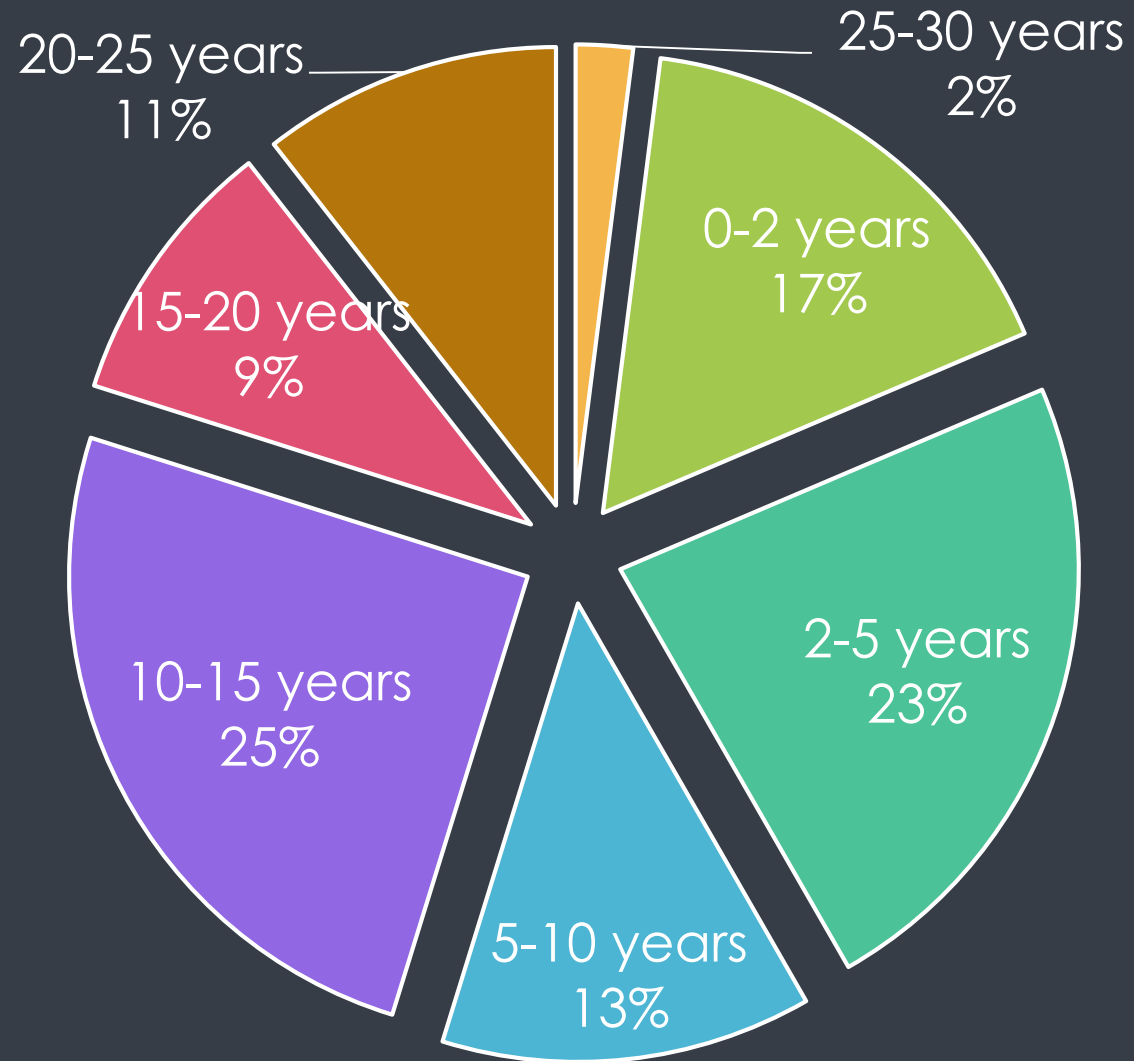
HYTCH IS A SMARTPHONE APPLICATION THAT PAYS YOU TO CARPOOL. IF THE CITY PARTNERED WITH HYTCH AND OFFERED ADDITIONAL FINANCIAL INCENTIVES TO CARPOOL TO WORK HOW LIKELY ARE YOU TO DO IT?



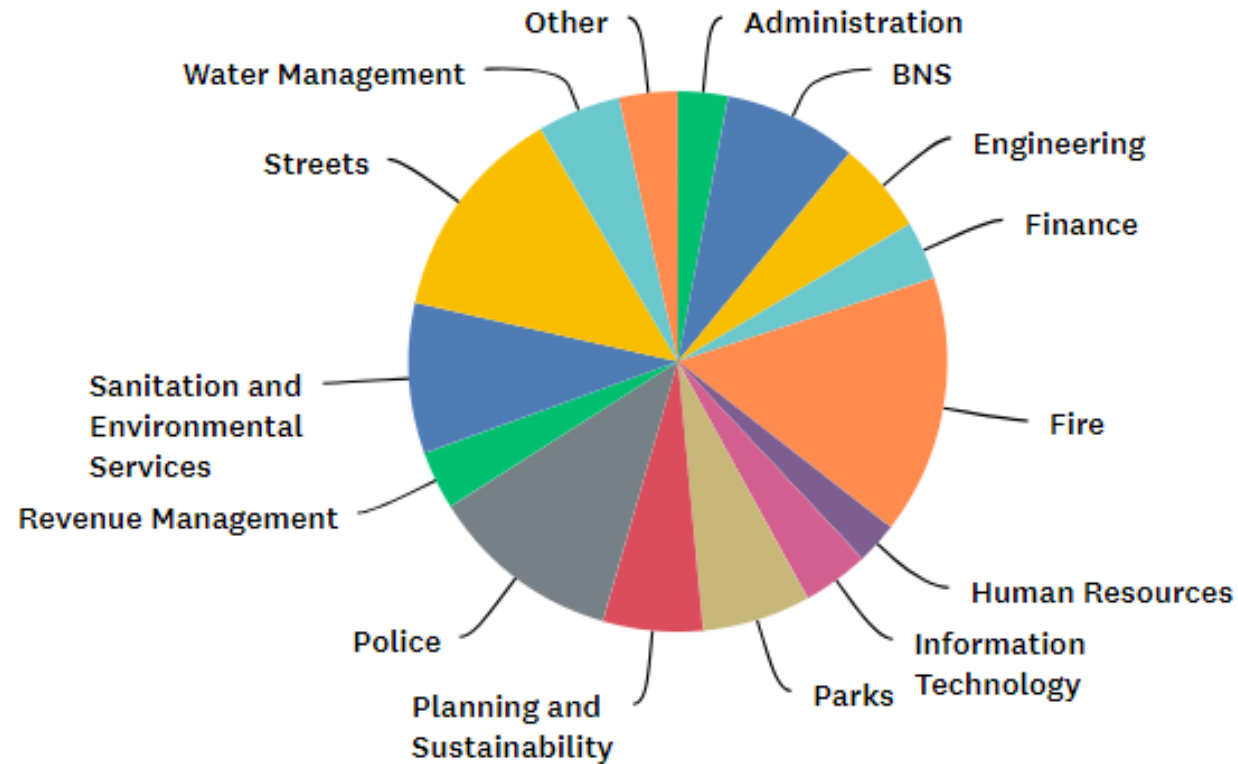
If the City partnered with Hytch and offered financial incentives, how much would it take for you to carpool to work?

<u>Answer Options</u>	<u>Responses</u>
3 cents/mile	0%
5 cents/mile	1.00%
10 cents/mile	2.00%
12 cents/mile	1.00%
15 cents/mile	3.5%
More than 15 cents/mile	11.00%
Undecided	34.5%
I'm not interested in carpooling	47.00%

How many years have you worked for the city?



PLEASE INDICATE WHAT DEPARTMENT YOU ARE IN



SURVEY SUMMARY

- 98% DRIVE ALONE TO WORK
- COMMUTE TIMES ARE INCREASING (45% TRAVEL AT LEAST 30 MINUTES ONE-WAY)
- FEWER EMPLOYEES LIVING IN FRANKLIN AND SPRING HILL
- SIGNIFICANT INCREASE OF EMPLOYEES COMING FROM NASHVILLE
- 40% OF RESPONDENTS HAVE WORKED FOR THE CITY LESS THAN FIVE YEARS
- INCENTIVE MUST BE HIGH ENOUGH FOR EMPLOYEES TO USE THE APP
- DESIRE FOR WORK FROM HOME FLEXIBILITY