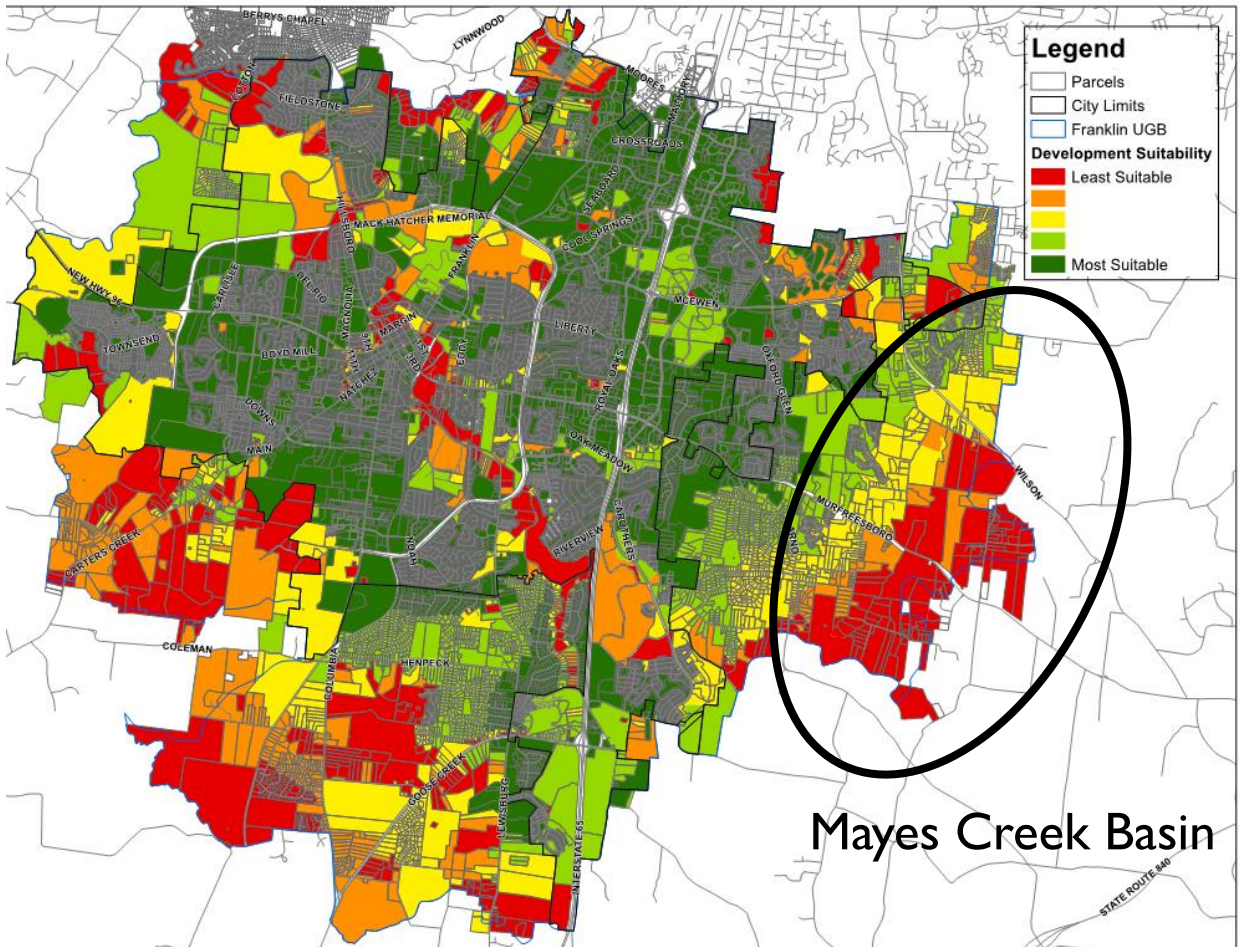
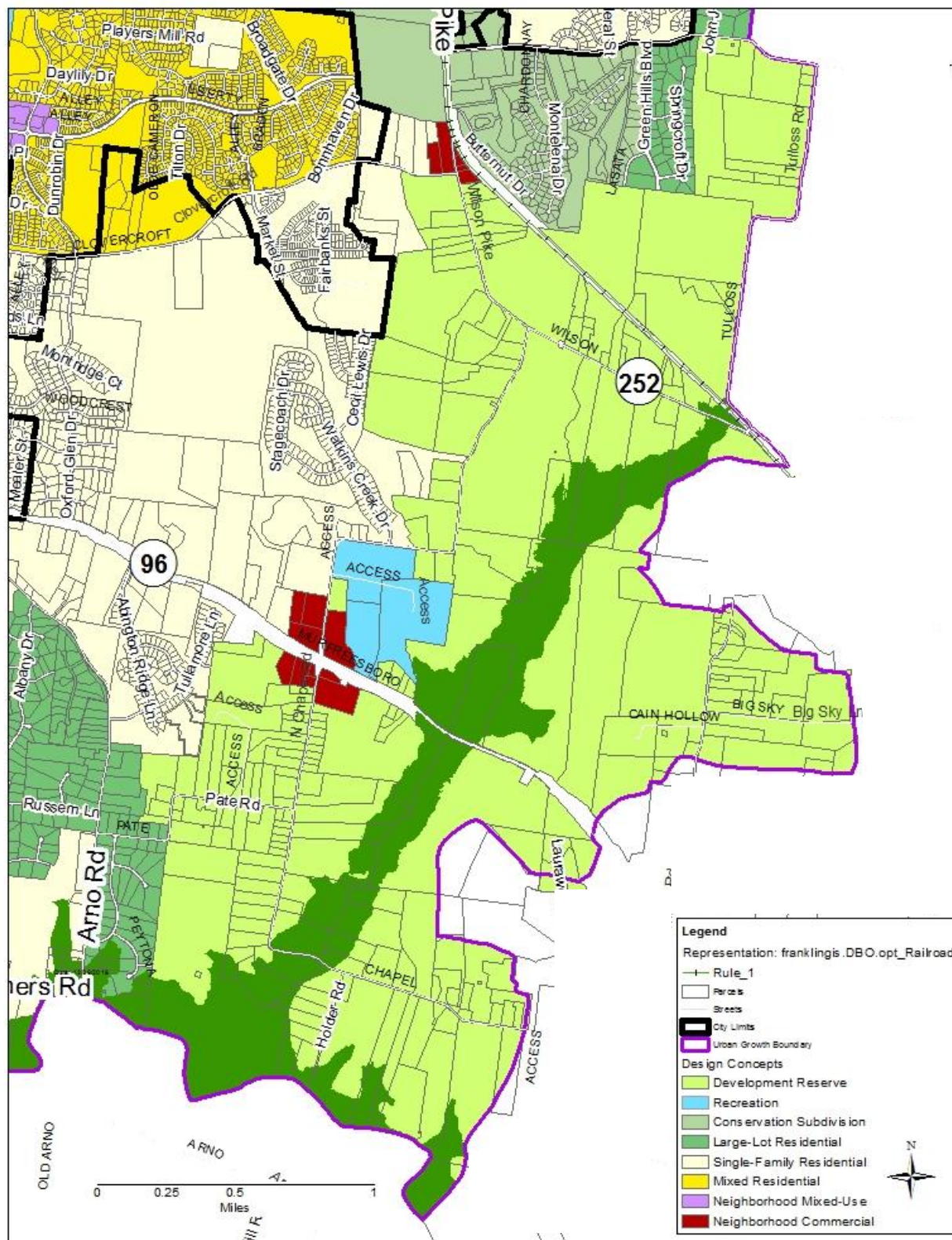


# ENVISION FRANKLIN SUITABILITY ANALYSIS



Currently, the Mayes Creek Basin lacks sewer availability, fire coverage, it remains far from commercial and employment centers, and has floodplain constraints. Due to these factors, the area is designated as Development Reserve.

# ENVISION FRANKLIN DESIGN CONCEPTS MAP



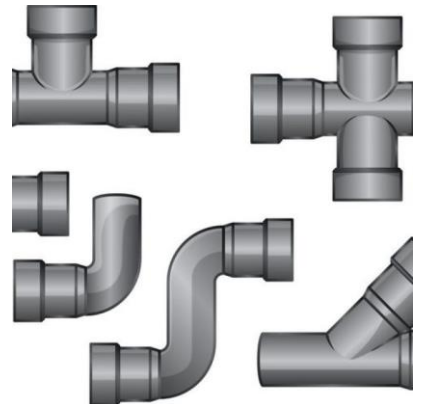


# SCENARIO PLANNING

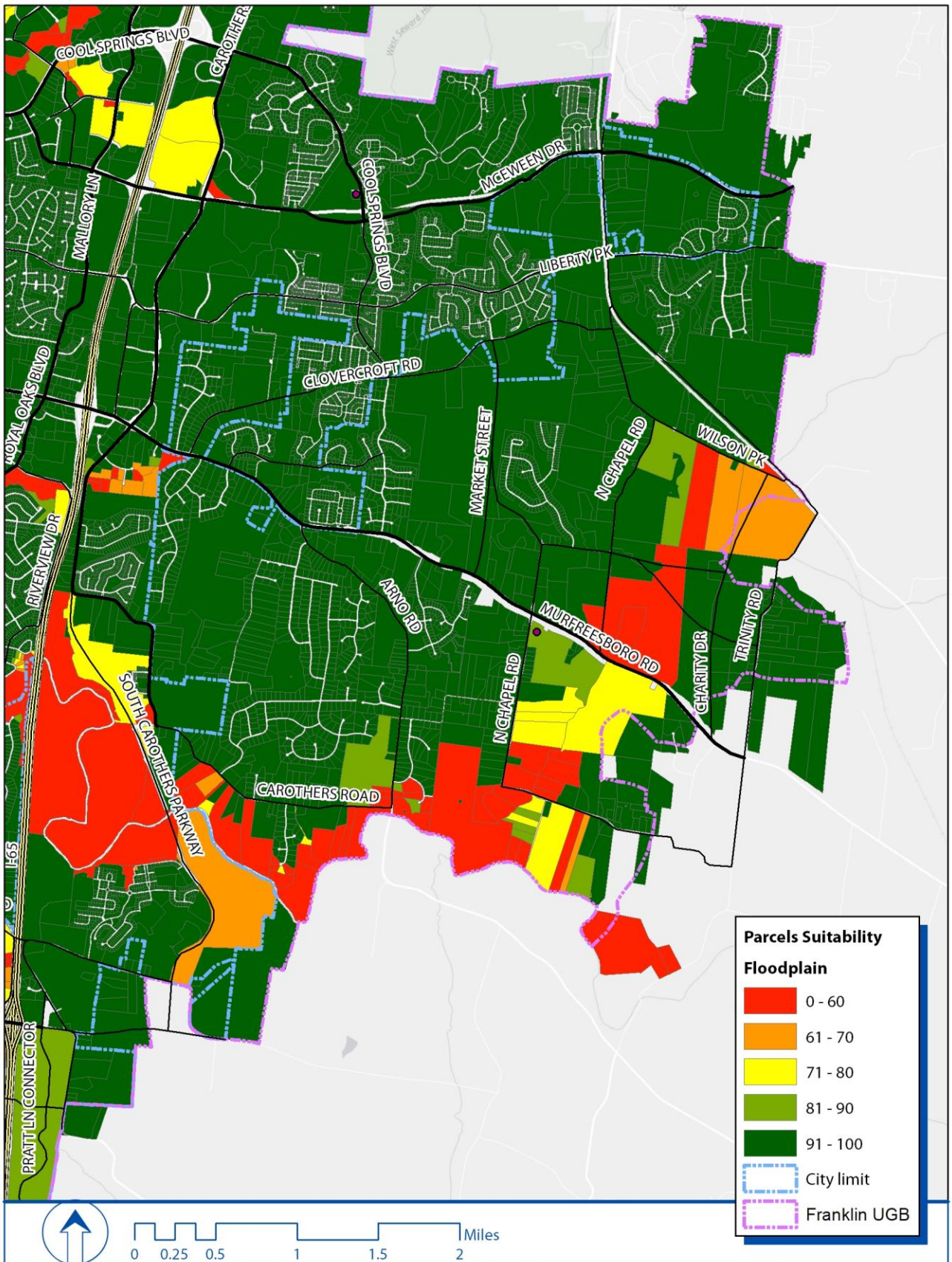
## Envision Franklin Suitability Analysis

### 9 Weighted Factors

Performed analysis assuming full sewer availability throughout the Mayes Creek Basin, a new fire station is located at the intersection of North Chapel Road/96E, and Murfreesboro Road is widened

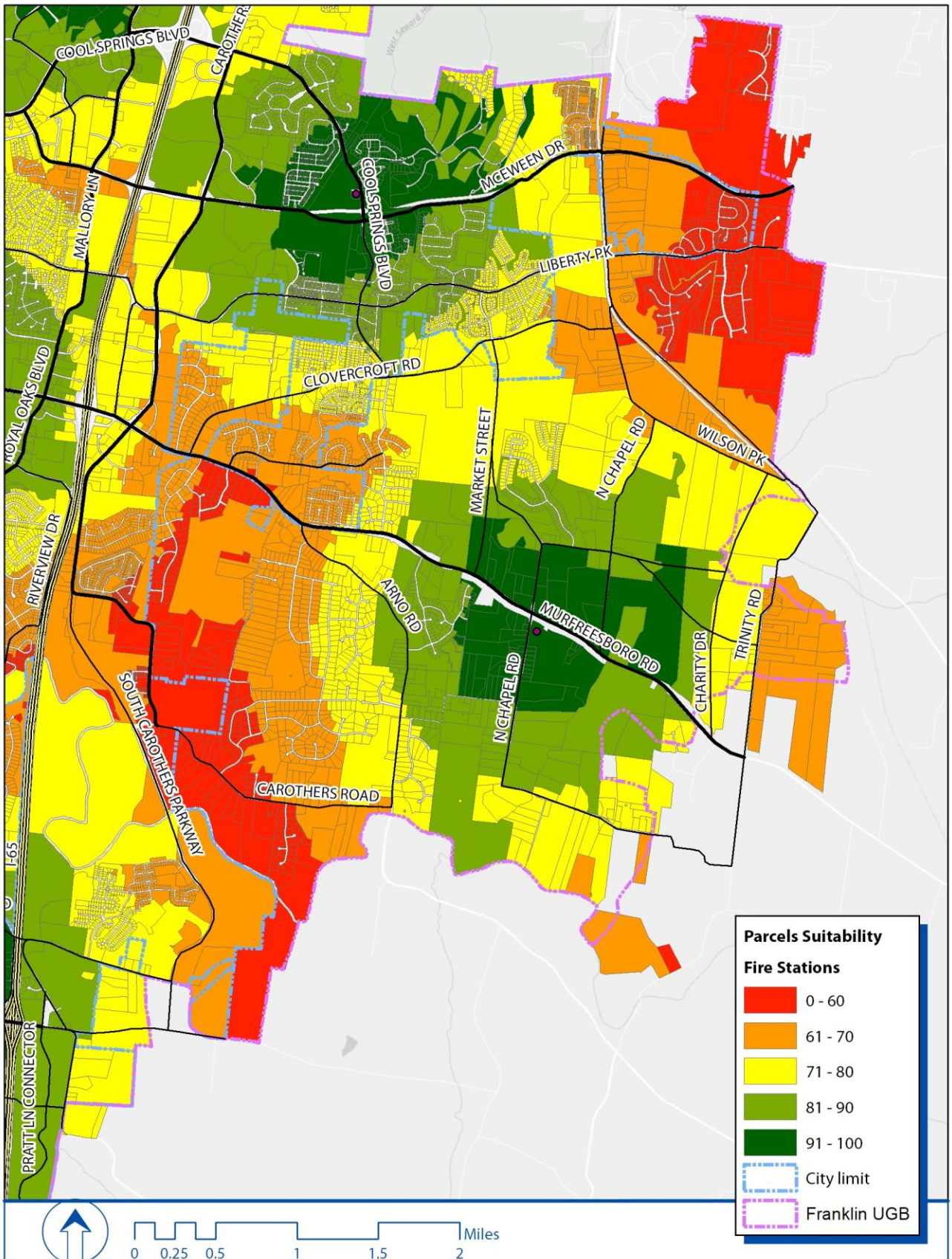


# FLOODPLAIN



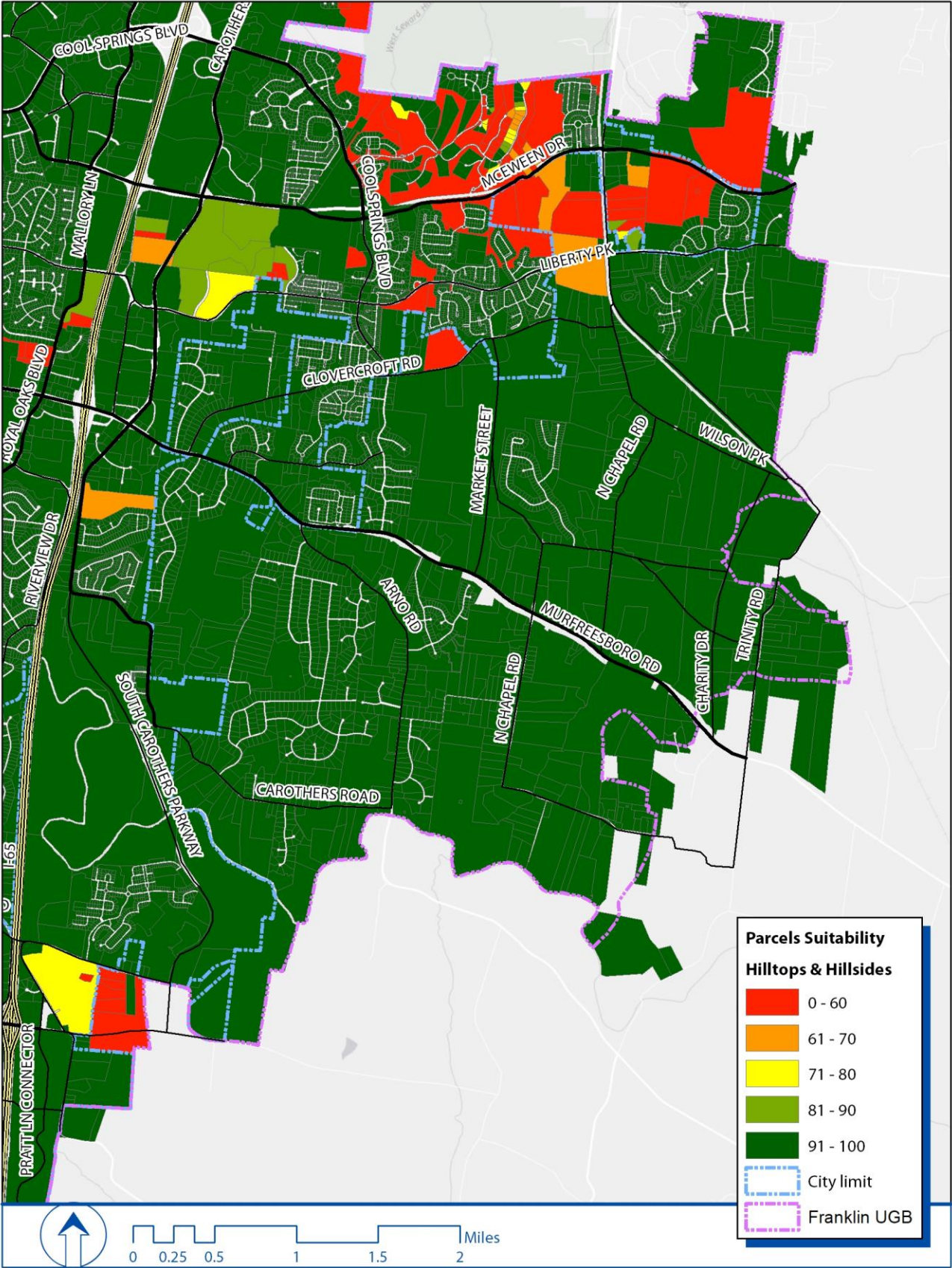


# FIRE STATION IF LOCATED AT 96E/NORTH CHAPEL RD



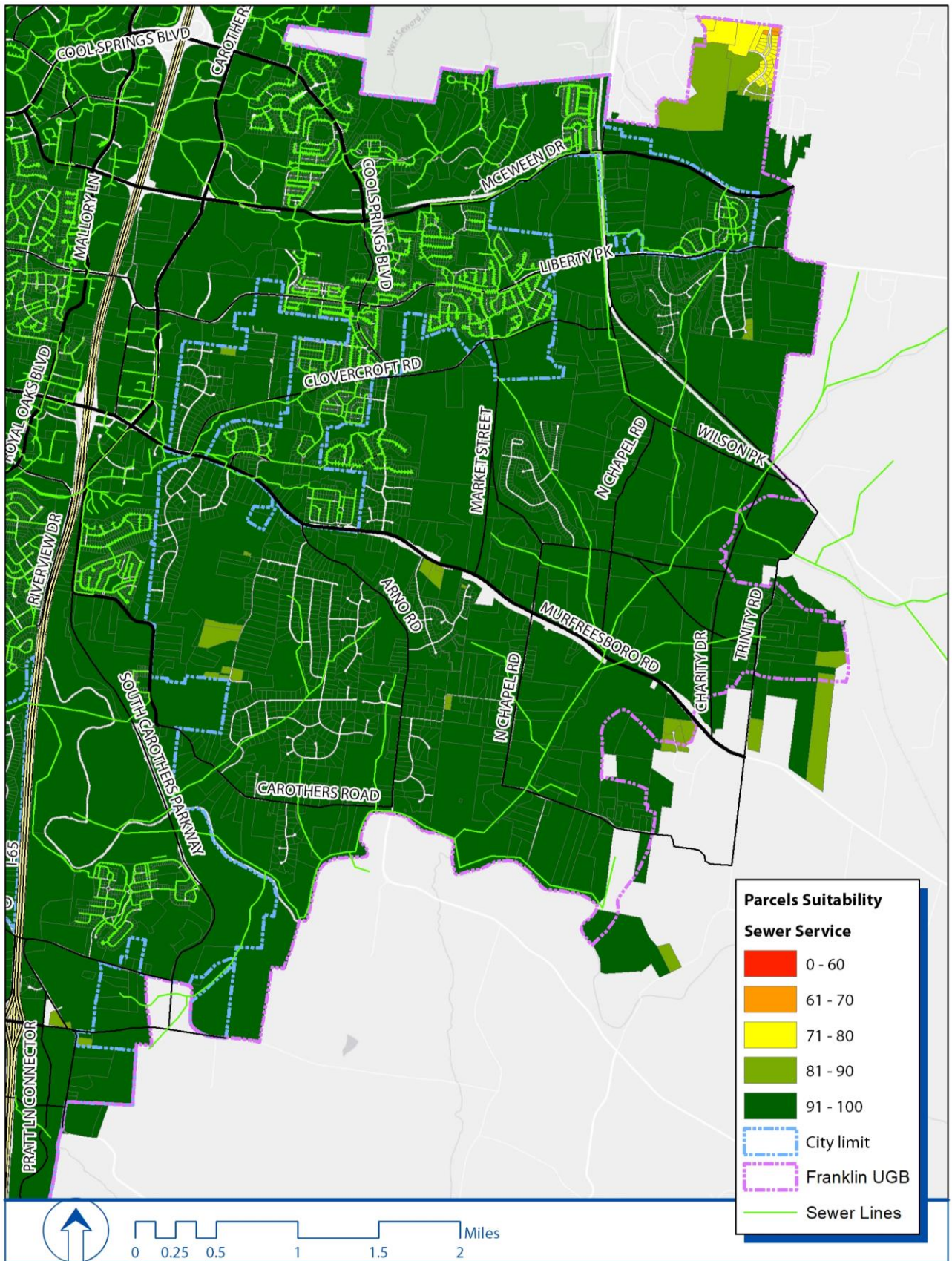


# HILLTOPS/HILLSIDES



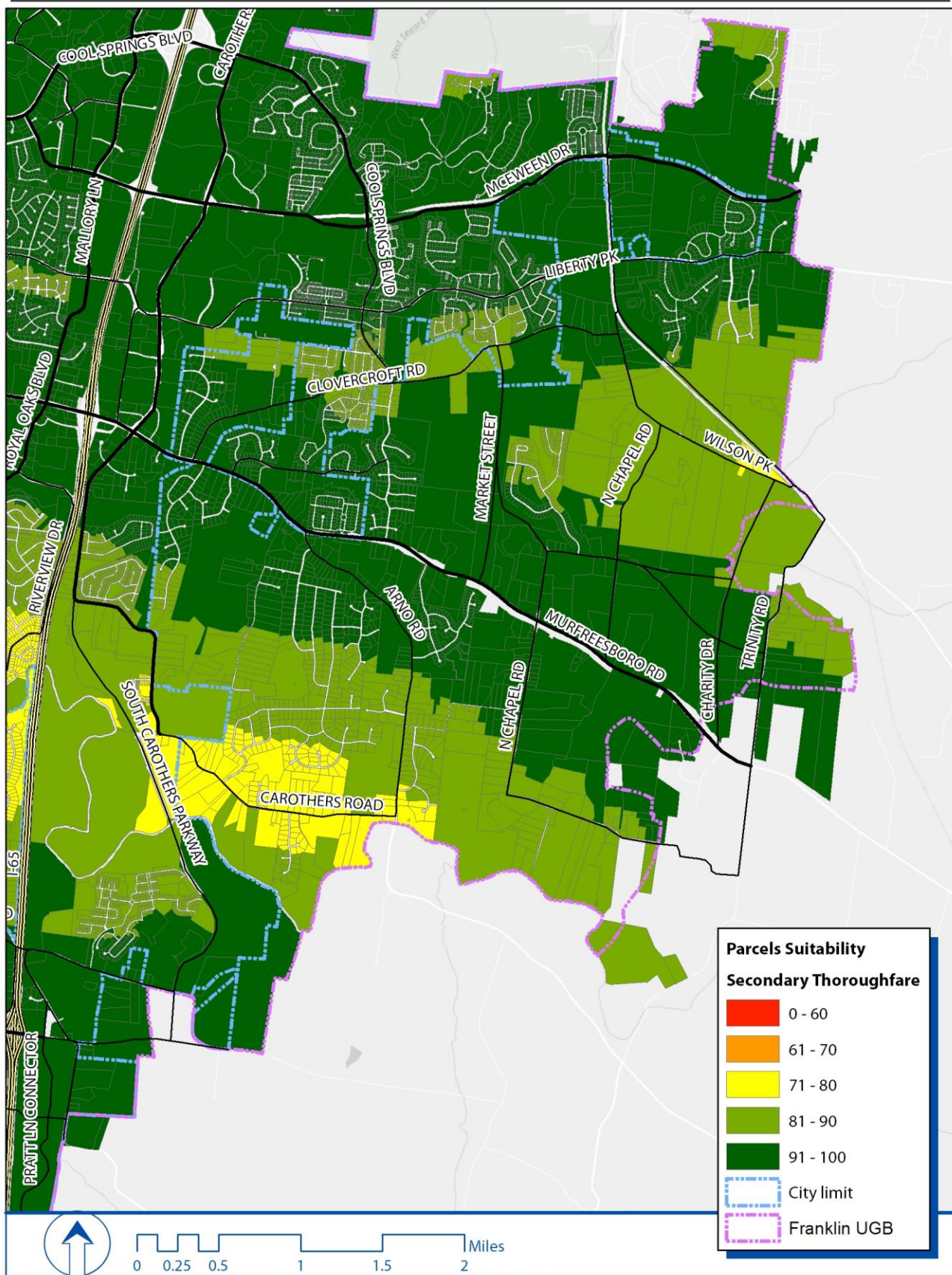


# ASSUMING FULL MAYES CREEK SEWER BUILDOUT



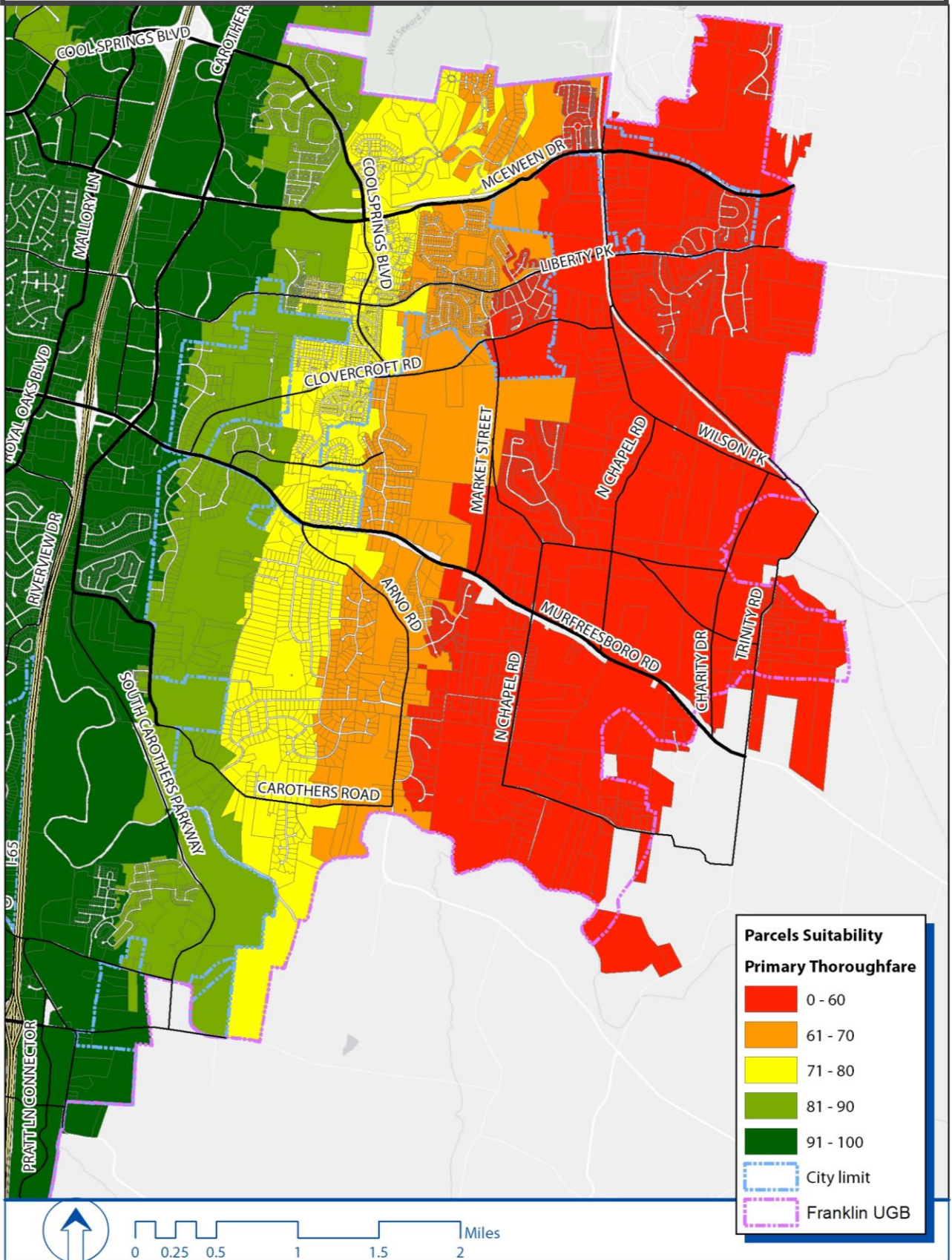


# SECONDARY THOROUGHFARES



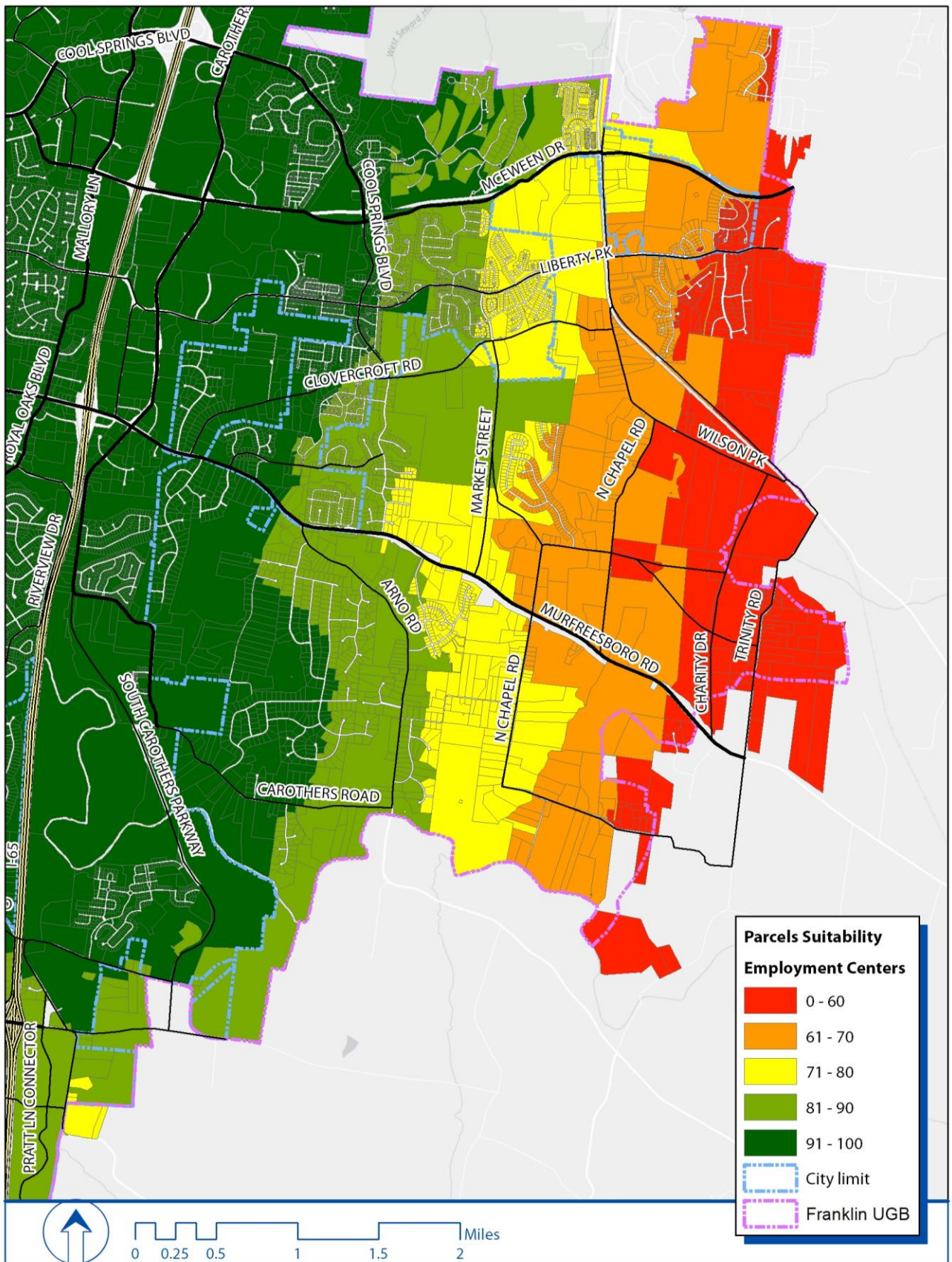


# PRIMARY THOROUGHFARES



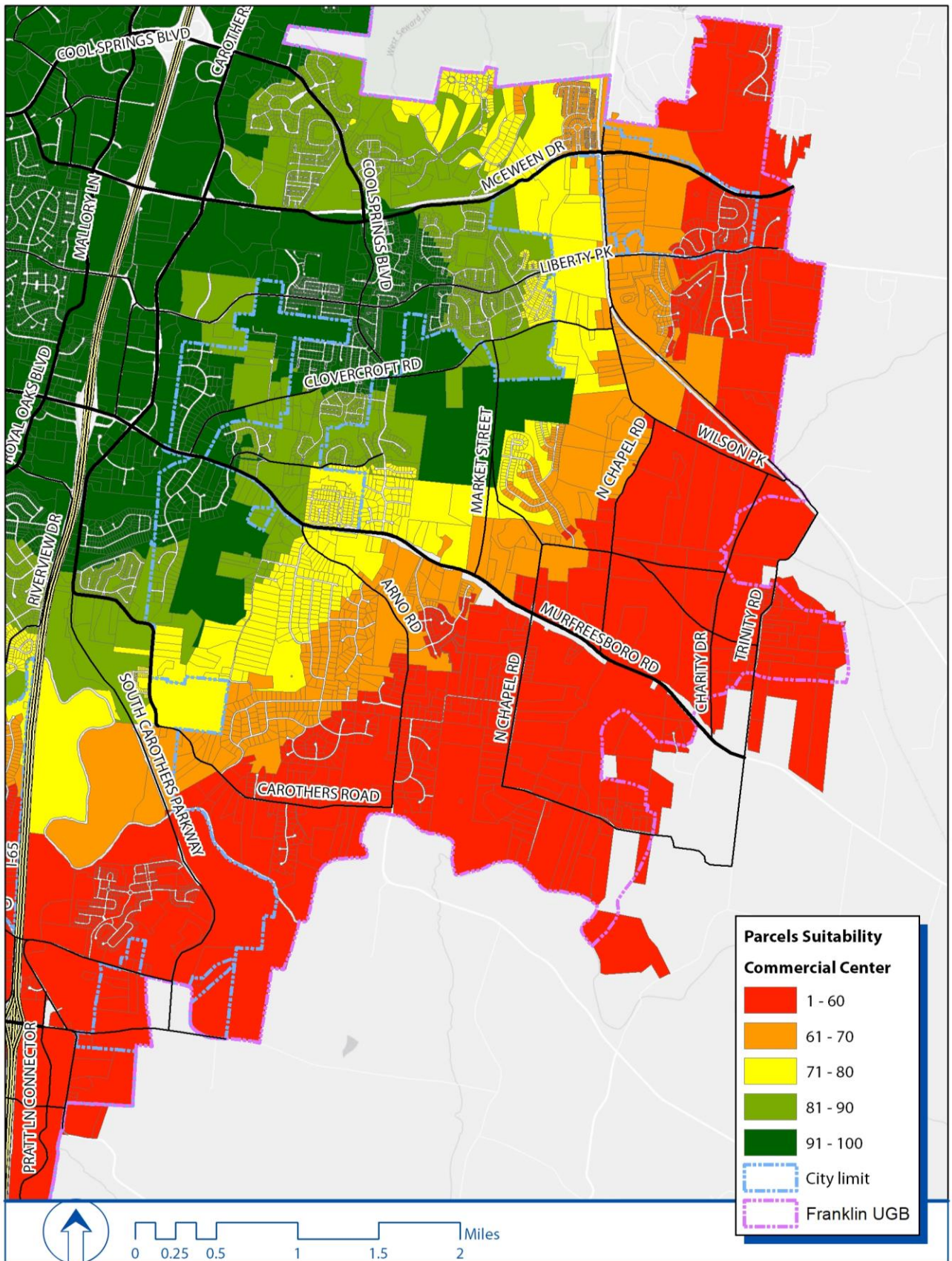


# EMPLOYMENT CENTERS





# COMMERCIAL CENTERS





# COMBINED FACTORS: ASSUMING NEW FIRE STATION, FULL SEWER AVAILABILITY, AND 96E IMPROVEMENTS

