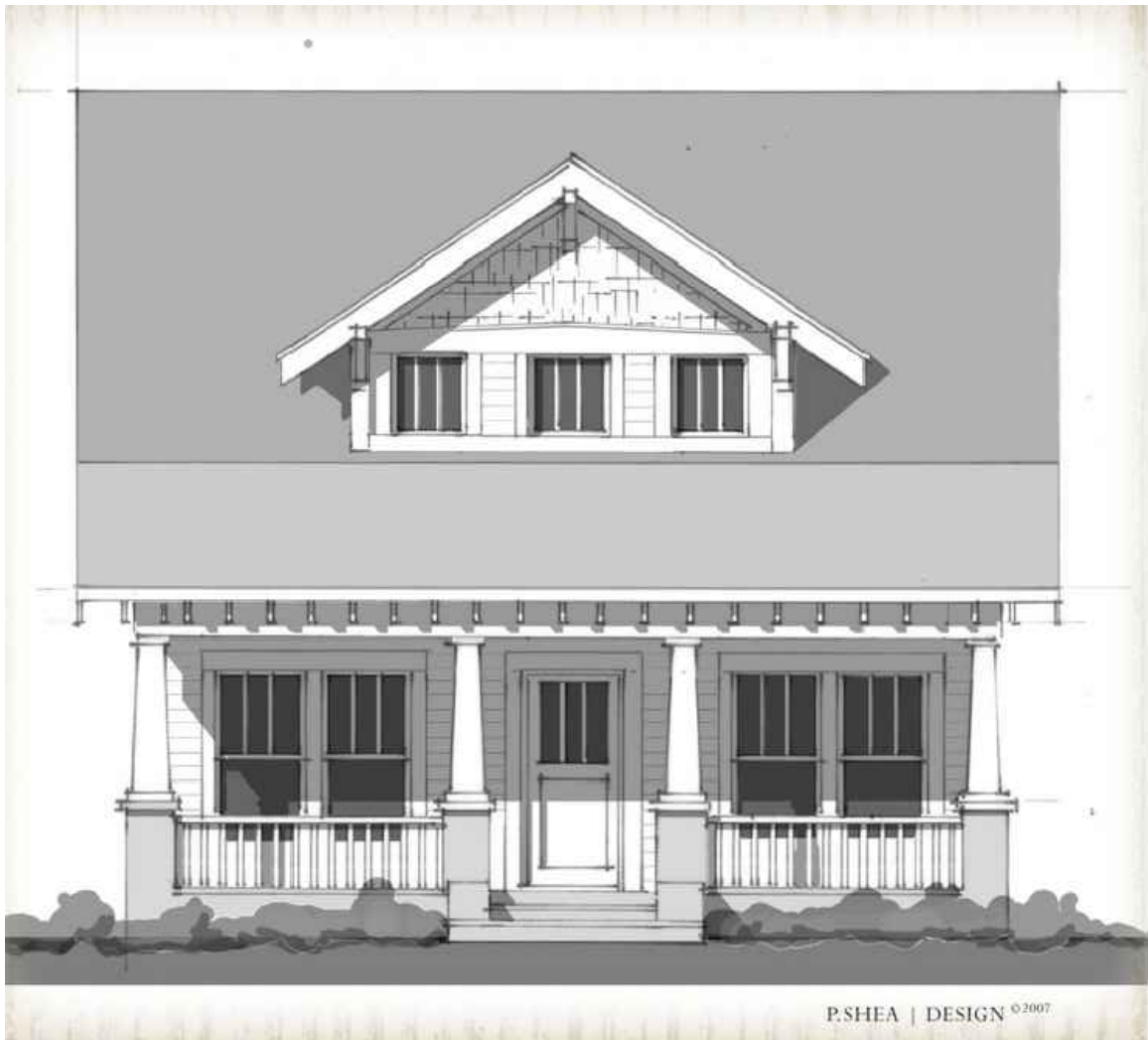




CLASSICAL:
Colonial homes are predominantly very symmetrical in appearance and simple in detail. They are most commonly found in two-story box form that features six windows on the second floor and six on the first. Dominant gables are steeply pitched and the roof is detailed to look like a classical pediment. They are often distinguished from other architectural styles by their porches and columns or pilasters. Typically the facades of these homes are constructed of brick, siding, or stone.



FEDERAL:
Similar to Classical architecture, the Federal style is recognized by its simplicity and symmetry. They are most commonly found in two-story box form that features six windows on the second floor and six on the first. Dominant gables are steeply pitched and the roof is detailed to look like a classical pediment. They are often distinguished from other architectural styles by their porches and columns or pilasters. Typically the facades of these homes are constructed of brick, siding, or stone.



CRAFTSMAN:
The craftsman home is distinguished by its comfortable and simple exterior details. They possess broad gables or hipped roofs with wide eaves. One or two large front dormers are a common feature with a roof line that extends approximately half way up the gable. The facades of these homes are generally light colored stone or stucco but may also consist of white washed brick.



FRENCH:
French homes are characterized by several elements. Roofs are steeply pitched with tall chimneys. Dormers or half dormers are a common feature with a roof line that extends approximately half way up the gable. The facades of these homes are generally light colored stone or stucco but may also consist of white washed brick.



ENGLISH TUDOR:
These homes are differentiated by various features. Often the facade is characterized by one or more cross gables and steeply pitched roofs. Large chimneys are frequently crowned by chimney pots. Tall narrow windows are commonly found in multiple windows. The facades of these homes are constructed of brick, stone, or siding.



VICTORIAN:
This style home features facades with utilitarian detailing such as structural brackets and pronounced structural framework which resembles the Tudor half-timbering. The building itself is typically asymmetrical and it is common for the siding patterns to vary. Roofs tend to have a steep pitch and are often irregular in shape. Victorian homes may include single story porches that wrap around the home and the structure is generally constructed of wood.

ARCHITECTURAL CHARACTER*:
The homes in Nichols Bend will be of an early 20th Century southern vernacular. Specifically, the styles that will influence the community are as follows:
*Architectural Character Images and Descriptions as depicted herein are per Approved Pattern Book.

| Revision | Date |
|----------|-------|
| △ | _____ |
| △ | _____ |
| △ | _____ |
| △ | _____ |