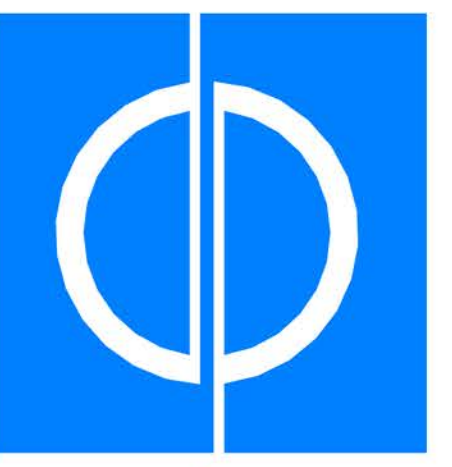


**Note:**  
The contractor shall ensure that all rooftop mechanical equipment is completely screened by the proposed building parapet from all directions and off site views. The change out of any equipment to a larger dimensional height or mounting height may require that the building parapet be raised to meet City of Franklin screening requirements.



**OWNER**  
Franklin Park Acquisition Co, LLC.  
270 Park Avenue  
New York, NY 10017

**DEVELOPER**  
Hall Emery Real Estate, LLC.  
6100 Tower Circle, Suite 150  
Franklin, TN 37067

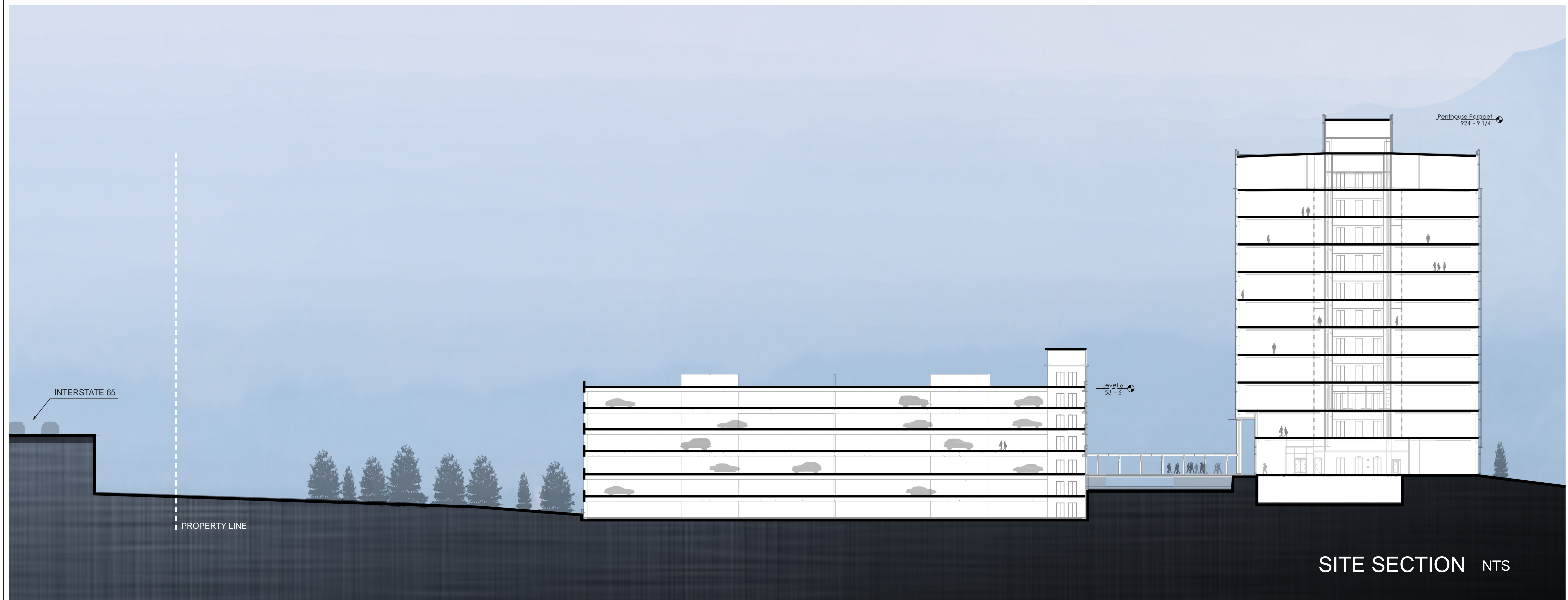
**ARCHITECT**  
Duda | Paine Architects, PA  
333 Liggett Street  
Durham, NC 27701

**CIVIL ENGINEER**  
Ragan-Smith Associates, Inc.  
315 Woodland Street  
Nashville, TN 37206

**LANDSCAPE ARCHITECT**  
Hughes, Good, O'Leary & Ryan, Inc.  
3445 Peachtree Road, Northeast  
Suite 1425  
Atlanta, GA 30326

**STRUCTURAL ENGINEER**  
King/Guinn Associates  
A Division of Bennett & Pless  
309 Amble Drive  
Charlotte, NC 28206

**MEP ENGINEER**  
Newcomb & Boyd, LLP  
303 Peachtree Center Avenue, NE  
Suite 525  
Atlanta, GA 30303



**THREE FRANKLIN PARK  
OFFICE AND GARAGE**

6600 Tower Circle  
Franklin, TN 37067

This document is the product and exclusive property of Duda/Paine Architects, PA. Neither the document nor the information it contains may be copied, disclosed to others or used in connection with any work or project other than the specific project for which they have been prepared and developed without the written consent of Duda/Paine Architects, PA.

Copyright 2018 Duda/Paine Architects, PA

[illegible]

SUE DATE: 04/05/2018  
PROJECT NUMBER: P21610

## Site Section

ite Plan Submission

FOR REFERENCE ONLY

## A5.0