

Ward's Mill Capacity Fee

Scott Andrews, EI

Brian Goodwin, PE

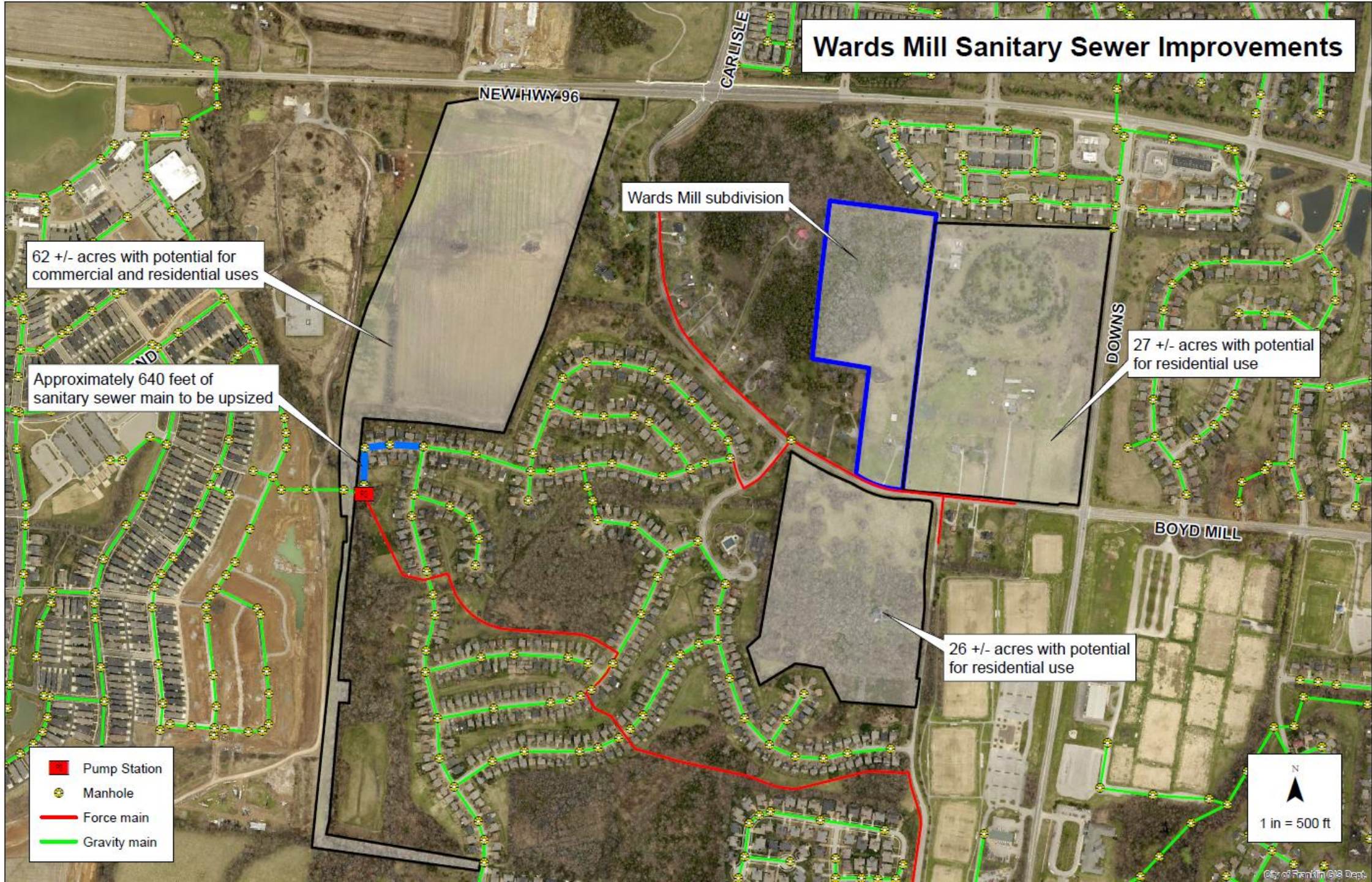
Jimmy Wiseman, PE

Ben McNeil

Outline

- Development initiated request
- Review of sewer infrastructure
 - Contributing drainage area study
- Developer led infrastructure upsizing
- Capacity fee model created for additional development

Wards Mill Sanitary Sewer Improvements

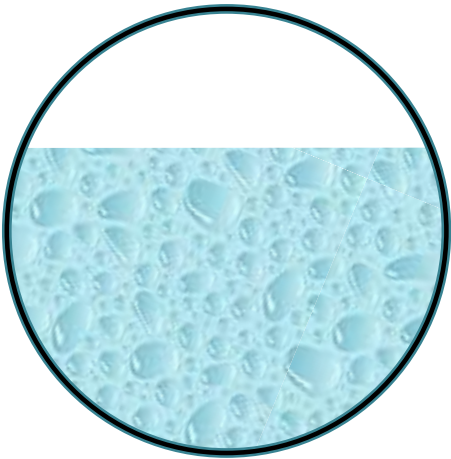


Contributing drainage area at full development

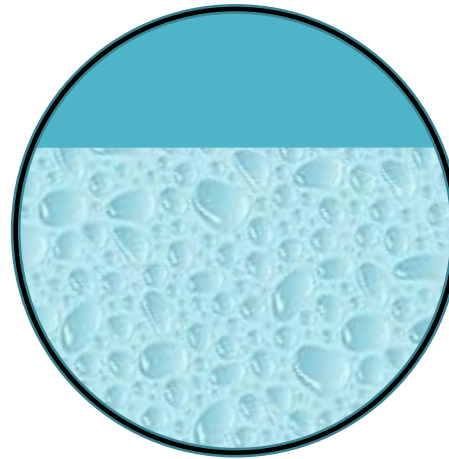
- Wards Mill and potential future developments will utilize additional capacity achieved from upsizing to 15-inch pipe
- The contributing drainage area will essentially be built out at that time, with no major additional flows requiring further improvements

Existing versus Ward's Mill Development

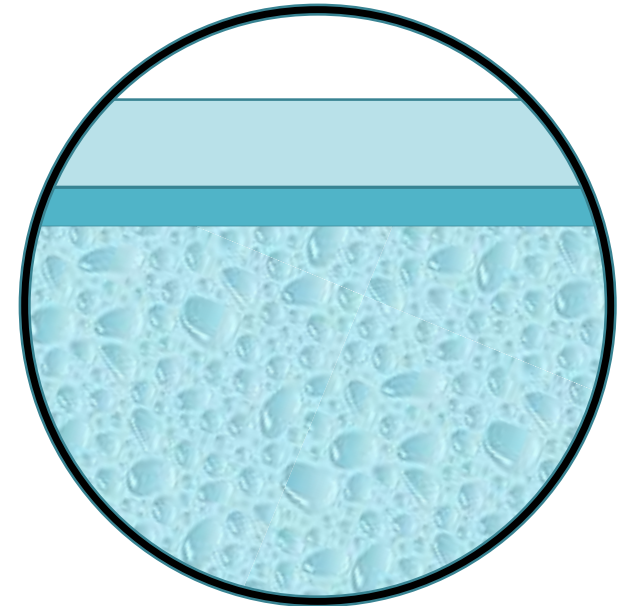
8" diameter
Available capacity = 27%



8" diameter
Existing flow + Wards Mill
Available Capacity = 0%



15" diameter
Existing flow + Wards Mill
+ Future Development
Available Capacity = 20%



Wards Mill Sanitary Sewer Improvements

