

DRAFT ORDINANCE 2018-06

TEMPORARY
MULTI-STORY BUILDING
DEVELOPMENT-IN-PROGRESS SIGNS

JCWS

March 22, 2018

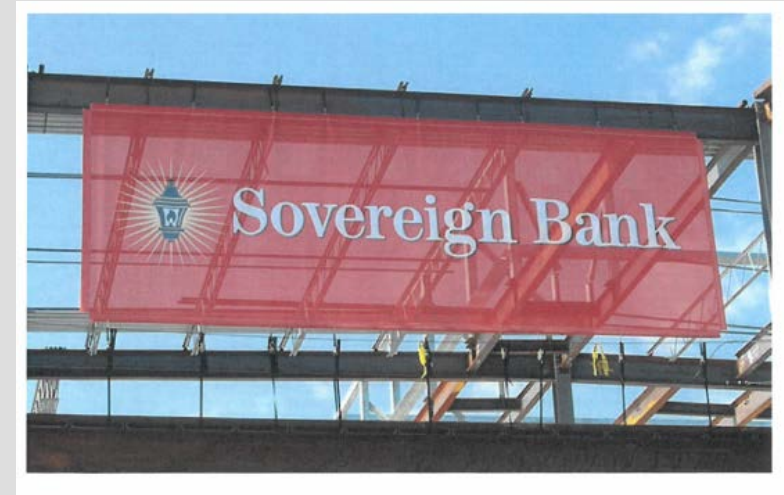
5.12.7 Summary Table of Sign Standards

Table 5-14, Summary Table of Sign Standards, sets out the minimum requirements for signs in the City:

TABLE 5-148: SUMMARY TABLE OF SIGN STANDARDS

Sign or Device	Base District	Maximum Number	Maximum Sign Area (in Sq Ft per Side, Total)	Maximum Height (in Ft)	Maximum Setback (in Ft)	Timing	Conditions
TEMPORARY							
Freestanding Development-in-progress	All	1 per contractor or supplier per entrance and 1 per pod of development	32, 64	6	Right-of-way	Non-residential: Remove within 1 year. Residential: Remove after 80% build-out, or 3 years, whichever occurs first.	NA 5.12.10(4)
Multi-Story Building Development-in-progress	All	1 per building	Total of 1 sq. ft. per linear ft. of building side	See Conditions	NA	Remove upon issuance of final certificate of use and occupancy	5.12.10(6)
Notes: NA = Not Applicable							

- Add new temporary sign type for Multi-Story Building Development-in-progress signs



Example Multi-story Building Temporary Development-in-progress sign

- Permitted in any base district
- Limited to buildings of three (3) stories or more in height.
- One sign per building
- Cannot be illuminated
- Cannot exceed the height of the roofline
- Shall be removed upon the issuance of a final Certificate of Use and Occupancy

5.12.7 Summary Table of Sign Standards

Table 5-14, Summary Table of Sign Standards, sets out the minimum requirements for signs in the City:

TABLE 5-148: SUMMARY TABLE OF SIGN STANDARDS							
Sign or Device	Base District	Maximum Number	Maximum Sign Area (in Sq Ft per Side, Total)	Maximum Height (in Ft)	Maximum Setback (in Ft)	Timing	Conditions
TEMPORARY							
Freestanding Development-in-progress	All	1 per contractor or supplier per entrance and 1 per pod of development	32, 64	6	Right-of-way	Non-residential: Remove within 1 year. Residential: Remove after 80% build-out, or 3 years, whichever occurs first.	NA 5.12.10(4)
Multi-Story Building Development-in-progress	All	1 per building	Total of 1 sq. ft. per linear ft. of building side	See Conditions	NA	Remove upon issuance of final certificate of use and occupancy	5.12.10(6)
Notes: NA = Not Applicable							

- Text amendment also corrects error in the Table numbering (Table 5-14)
- Renames existing temporary Development-in-progress sign to Freestanding Development-in-progress sign in Table 5-14 and in Section 5.12.10 (4)

(4) **Freestanding** Temporary Development-In-Progress Signs

The following provisions shall apply to all temporary development-in-progress signs:

- Maximum of one per contractor or supplier per entrance and one per pod of development;
- Maximum sign area of 32 square feet per side, with a total of 64 square feet;
- Maximum height of six feet;
- Minimum setback at the right-of-way line per applicable district regulations;
- Signs in nonresidential projects removed within one year; and
- Signs in nonresidential projects removed after 80 percent of buildout, or three years, whichever occurs first.

- Clarifies that Temporary Signs listed in Section 5.12.11(8) applies to Temporary Signs, If Not Otherwise Regulated

(8) Temporary Signs, **If Not Otherwise Regulated**

The following provisions shall apply to all temporary signs:

- Maximum sign area of 32 square feet per side, with a total of 64 square feet;
- Maximum height of six feet;
- Minimum setback at the right-of-way line per applicable district regulations; and
- No more than two such signs allowed per lot.