

CONDITIONS OF APPROVAL:

Open Issues: 6 These issues are currently being filtered

Engineering - Final Plat Checklist

General Issues

7. C. Final Plat

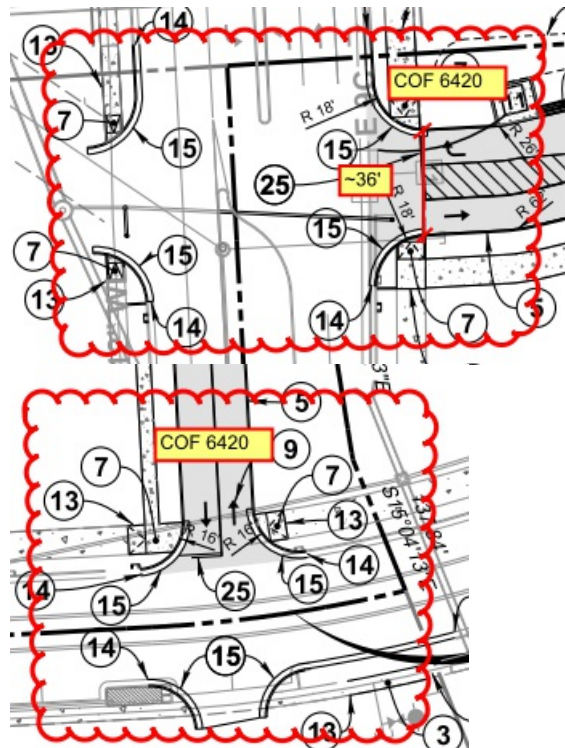
joe.marlo@franklin.tn.gov Comment partially addressed.

Applicant to modify Note 18 on Sheet 6 of 6 to include "and shall be Public Utility, Drainage and Access Easements."

14. Ovation Lot 3 Improvements

joe.marlo@franklin.tn.gov Comment partially addressed as not all improvements within Public Access Easements appear to be shown.

Applicant to show all improvements within Public Access Easements as shown on the approved Ovation Lot 3 Site Plan (COF 6420), including along work in Ovation Parkway and Tribute Lane. Note specifically the areas in Ovation Parkway and Tribute Lane clouded below.



24. C. Final Plat

carlb@franklin.tn.gov Applicant shall place a note on the plat stating "The traffic signals at Ovation Parkway & Knoll Top Lane, and at Ovation Parkway & Encore Lane, and the fiber optic communications infrastructure on Ovation Parkway, shall be owned and maintained by the City of Franklin. The private owners of the public utility and access easements shall allow full access to City of Franklin personnel and its contractors for operations and maintenance purposes."

Performance Agreement and Surety

General Issues

4. Engineering Sureties

kevin.long@franklintn.gov No sureties are associated with this Final Plat.

*(This comment serves only as a reminder to staff. No action is necessary from the applicant, and **this comment does not hinder approval.**)*

Planning

[3546121_2017_0911_OVATION RESUB FINAL PLAT REVISION 2.pdf](#)

21. FWO and FFO

amy.diaz-barriga@franklintn.gov The plat cannot be recorded until the LOMR has been completed and BZA has authorized the relocation of the FFO lines. Prior to One-Stop, the LOMR information and the BZA approval date of the FFO line shift will be added to the plat in a note.

Stormwater

General Issues

25. Stream Buffer

jeff.willoughby@franklintn.gov Label stream on all sheets. Show and label stream buffer (applied on each side from top of bank) including applicable Buffer Zones on these sheets as well.

[Edited By Jeff Willoughby]