

H

G

F

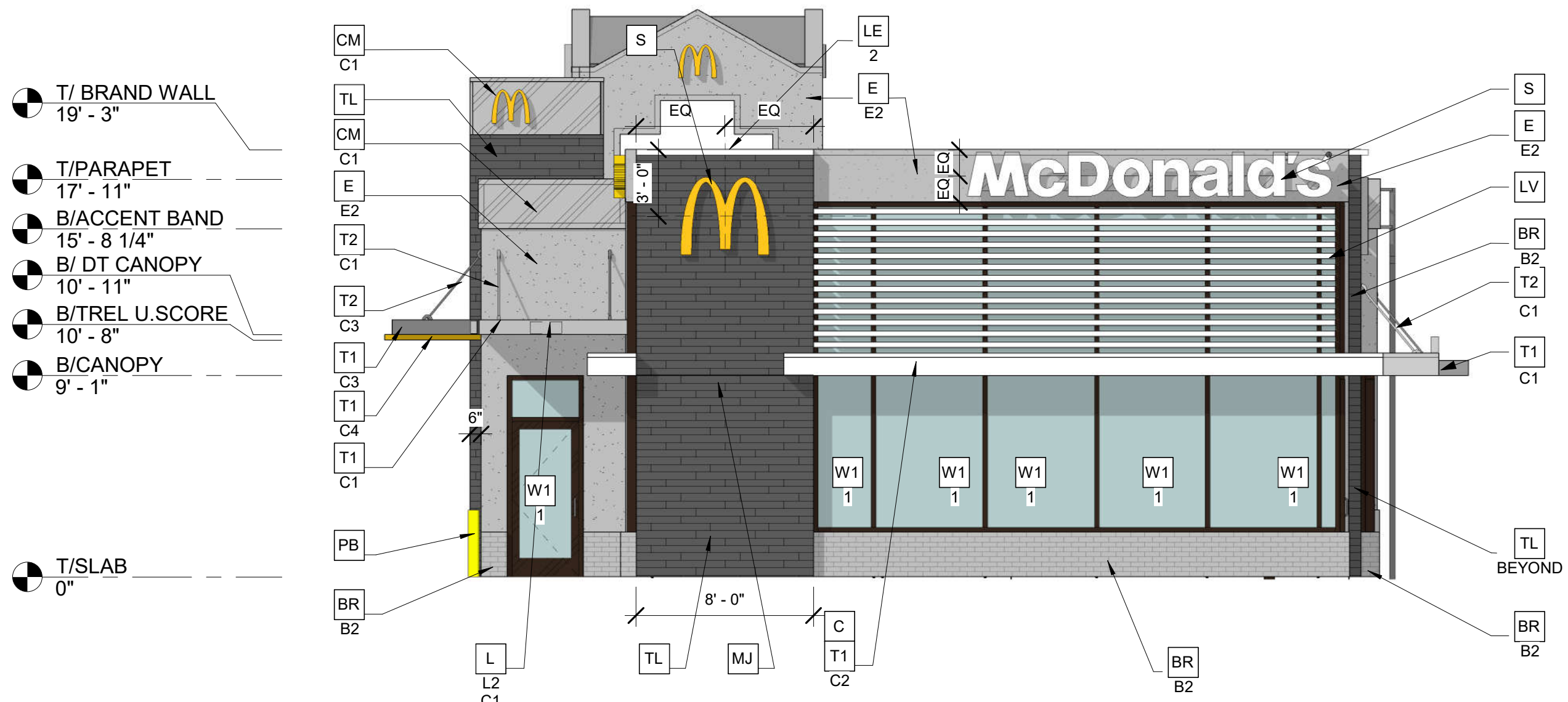
E

D

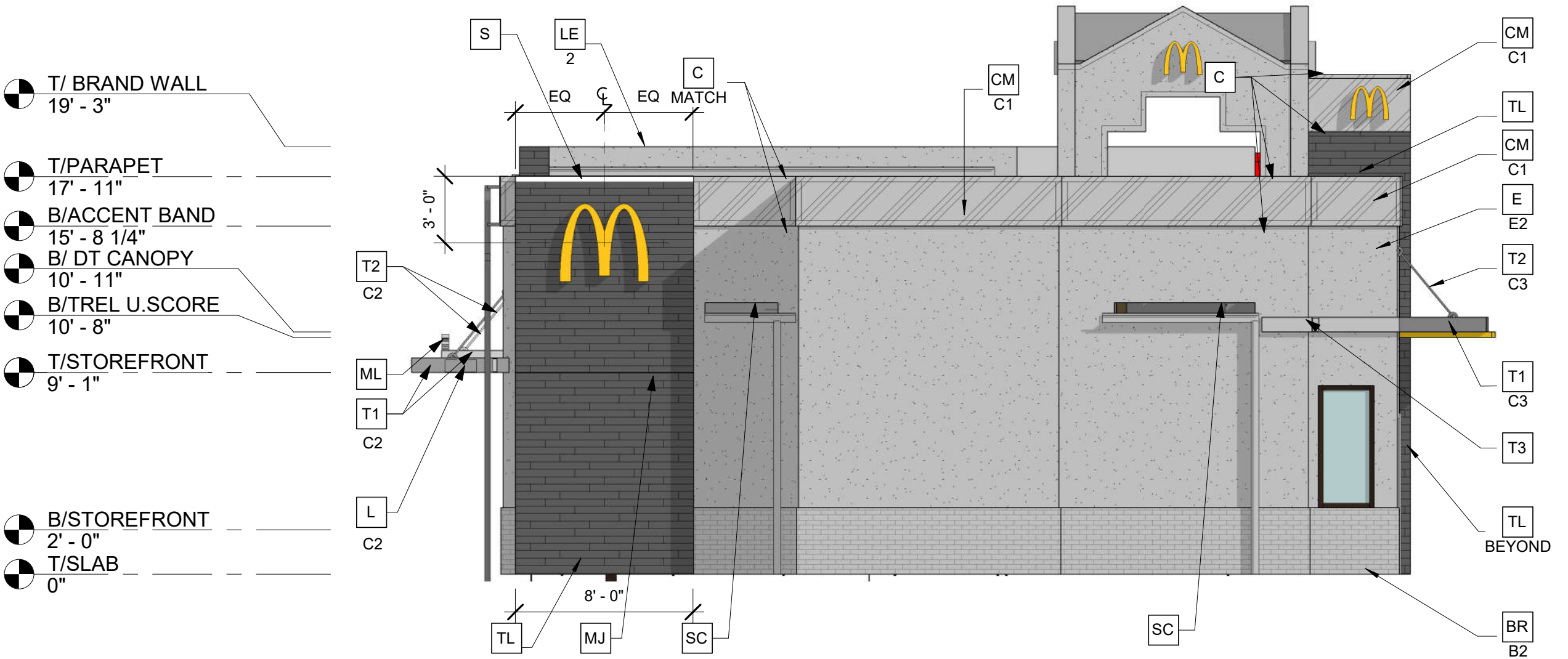
C

B

A



2 Front Elevation
3/16" = 1'-0"



1 Rear Elevation
3/16" = 1'-0"

ELEVATION MATERIAL PERCENTAGES		
	SURFACE AREA	PERCENT
GROSS OF WALL	783.44	NA
GLASS	282.21	36.02%
BRICK	55.38	7.07%
E.I.F.S	105.14	13.42%
MTL	168.43	21.5%
TILE	172.38	22.00%

4629.44 TOTAL BLDG SQFT

ELEVATION MATERIAL PERCENTAGES		
	SURFACE AREA	PERCENT
GROSS OF WALL	779.69	NA
GLASS	13.75	1.76%
BRICK	97.35	12.49%
E.I.F.S	431.14	55.3%
MTL	83.45	10.7%
TILE	154.00	19.75%

4629.44 TOTAL BLDG SQFT

Elevation Key Notes

- BR — FACE BRICK
XX — TYPE: (COLOR - SEE COLOR LEGEND)
E1 = EXISTING PAINTED MASONRY-COLOR BASE BUILDING
C1 = PAINTED MASONRY-COLOR BASE BUILDING
C2 = PAINTED MASONRY-COLOR ACCENT BUILDING
- C — ALUMINUM CANOPY FASCIA SYSTEM (COLOR: WHITE)
- CJ — CONTROL JOINT
- C — METAL COPING -
COLOR TO MATCH SURROUNDING MATERIAL
- CM — CORRUGATED METAL PANEL - SEE
XX — COLOR
C1 = "CITYSCAPE" BY METAL
- D — HOLLOW METAL DOOR - PAINT TO MATCH
COLOR OF SURROUNDING MATERIAL
- E — EXTERIOR INSULATION FINISH SYSTEM
(E.I.F.S.) OUTSULATION PLUS MD BY DRYBIT
OF EQUAL HIGH IMPACT ZONES: PANZER 20'
ULTRA HIGH IMPACT MESH ASSEMBLY FOR
EIFS AREAS WITH IN 8'-0" OF GRADE FINISH:
HYDROPHOPIC TEXTURE: SANDEBBLE
COLOR: STATOTONE HIGH PERFORMANCE
COLORANT- MATCH TO BENJAMIN MOORE
OR EQUAL
C1 = CHELSEA GRAY HC-168 BY
BENJAMIN MOORE
C2= BM IRON MOUNTAIN 2134-30 BY
BENJAMIN MOORE

- GR — GUARDRAIL
- L — LIGHT FIXTURE (WALL SCNCE) - SEE ELECTRICAL
XX — TYPE:
L1 = UP AND DOWN
L2 = DOWN ONLY
L3 = RECESSED DOWN
COLOR
C1= SILVER
C2= WHITE
- LE — ACCENT LIGHTING - SEE ELECTRICAL
XX — LED LIGHT:
L1= UP AND DOWN FIXTURE
L2 = DOWN ONLY FIXTURE
L3 = INTEGRAL CANOPY FIXTURE
- LV — METAL LOUVER PANEL BY TRELLIS VENDOR
COLOR: CITYSCAPE
- MF — METAL FASCIA (COLOR: CITYSCAPE)
X — TYPE:
1 = PRE-FAB ANCHOR - TILE FASCIA
2 = PRE-FAB CUSTOM ARCADE FASCIA
- ML — METAL LETTING - BY OTHERS (COLOR SILVER)
X — TYPE:
1 = "WELCOME" - COLOR: SILVER
2 = 24"H x 3/4" THICK METAL ARCH
COLOR : PANTONE 123C
- MS — EXISTING MECHANICAL SCREEN
- PB — PIPE BOLLARD - PAINTED YELLOW

- PT — PASS-THRU COIN COLLECTOR - OPTIONAL (RMHC)
- RO — ROOF DRAIN OVERFLOW PIPE
PAINT TO MATCH SURROUNDING MATERIAL
- S — McDONALD'S SIGNAGE BY OTHERS - UNDER
SEPARATE PERMIT. SEE SIGNAGE SUPPORT
NOTE ON THIS SHEET.
- T1 — ALUMINUM TRELLIS SYSTEM
XX — COLOR
C1 = CITYSCAPE
C2 = WHITE
C3 = CHARCOAL
C4 = GOLD
- T2 — ALUMINUM TRELLIS TIE-BACK SYSTEM
XX — COLOR
C1 = CITYSCAPE
C2 = WHITE
C3 = CHARCOAL
- T3 — ALUMINUM TRELLIS 2x8 WALL FASCIA SYSTEM
COLOR: CITYSCAPE
- TL — TILE OPTIONAL - SEE COLOR LEGEND
CONTACT: JAN DETER, (714) 937 - 7500
- W1 — NEW STOREFRONT AND
X — 1 = NEW STOREFRONT AND GLAZING -
SEE ASSEMBLY NOTES
2 = EXISTING WINDOW TO REMAIN

Color Legend		All colors are per Benjamin Moore paints.
MODERN SCHEME	BASE BUILDING	BM CHELSEA GRAY HC-168
	BRAND WALLS	BM IRON MOUNTAIN 2134-30 OPTIONAL SHOWN: EUROWEST eWOOD COLOR: R9 BLACK, SIZE: 6x36 PATTERN: 1/4 RUNNING BOND GROUT: MAPEI-47 CHARCOAL ACCESSORIES: CORNER TRIM- RONDEC RO100RSDA (DARK ANTHRACITE) BY SCHLUTER: MOVEMENT JOINT- DILEX BWB100GS (BLACK) BY SCHLUTER
	DT SURROUND	BM IRON MOUNTAIN 2134-30



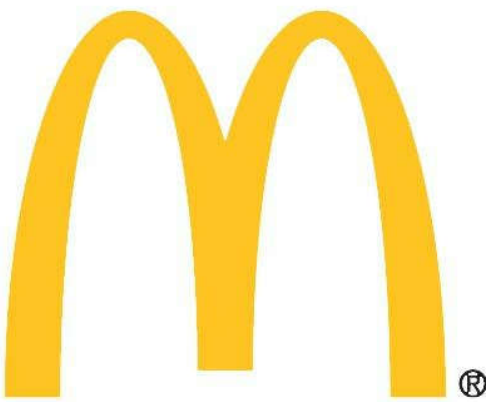
CM Architects PLLC

1500 4TH AVENUE NORTH #101
NASHVILLE TENNESSEE 37208
615-244-9622

OWNERSHIP OF INSTRUMENTS OF SERVICE

All reports, drawings, specifications, computer files, field data, notes and other documents and instruments prepared by the Architect as instruments of service shall remain the property of the Architect. Architect shall retain all common law, statutory and other reserved rights, including, without limitation, the copyrights thereto.

CLIENT



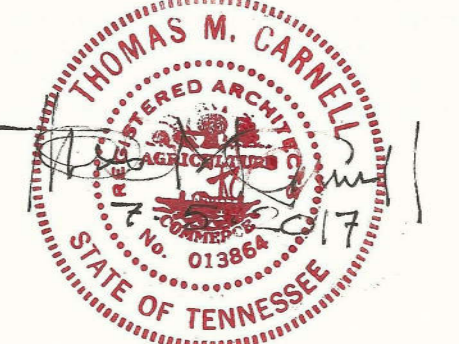
PROJECT

McDonald's USA
#041-0369
1704 Galleria BLVD., Franklin TN

No.	Description	Date

DRAWN BY: MCWIII
CHECKED BY: TMC
PROJECT #: #041-0369
ISSUE DATE: 2017 5 -11
DRAWING ISSUE: Project Status

PROFESSIONAL SEAL



copyright CM ARCHITECTS PLLC 2017 5-11

SHEET DESCRIPTION
Elevations

DRAWING NUMBER

A 2.1