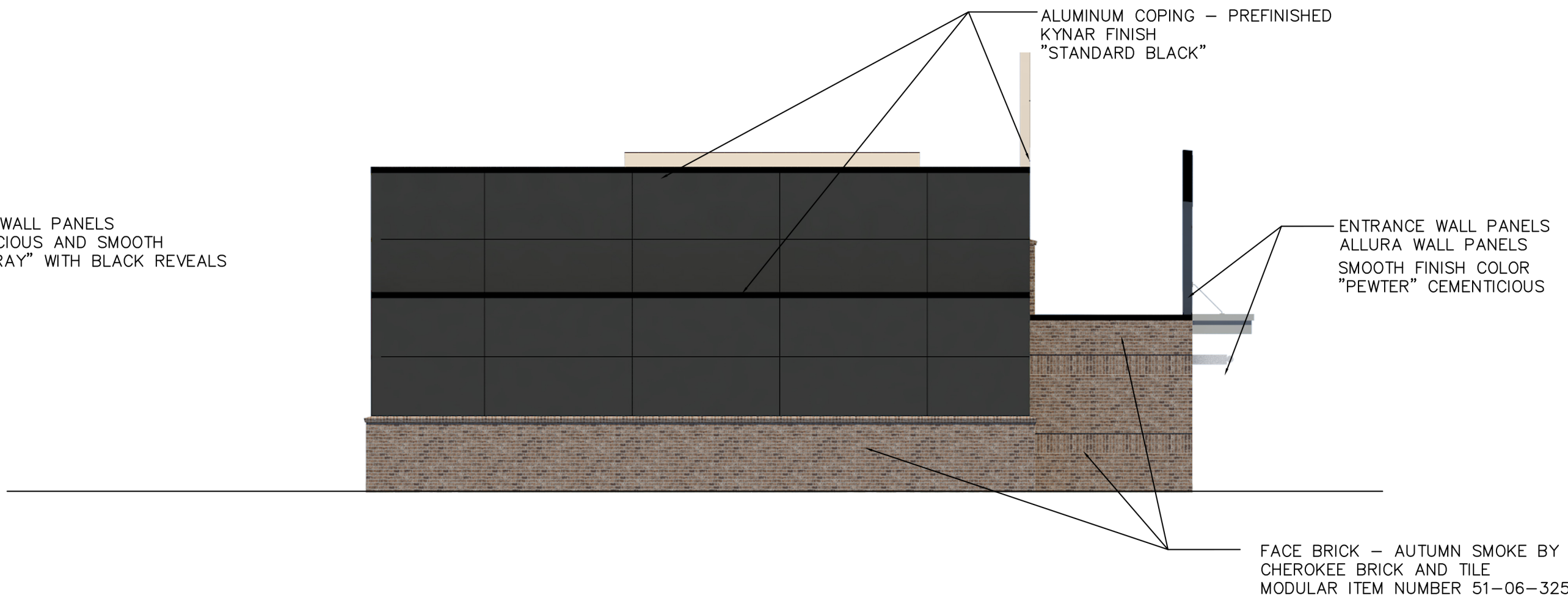


## ELEVATION

END - EAST ELEVATION

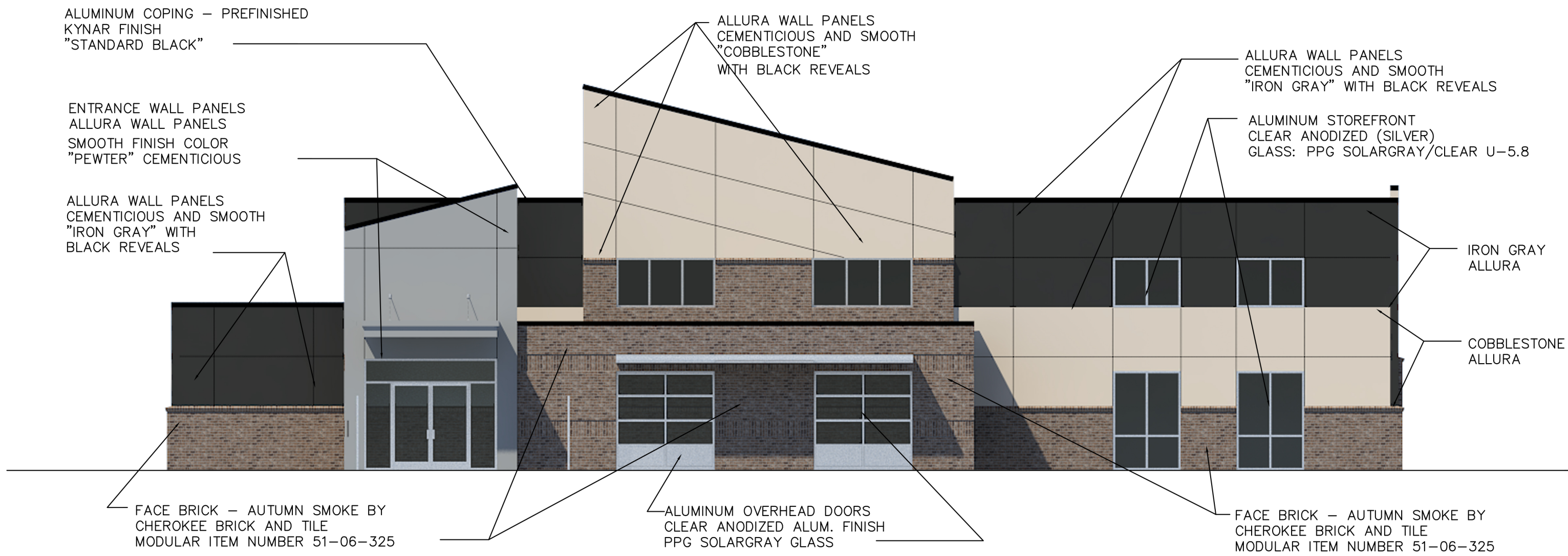
EAST ELEVATION	1125 S.F.	100%
NET OF WALL	1040 S.F.	93%
BRICK MASONRY	360 S.F.	35%
NET WALL PANELS	680 S.F.	66%
NEW METAL CANOPIES	8 S.F.	0%



## ELEVATION

END - EAST ELEVATION

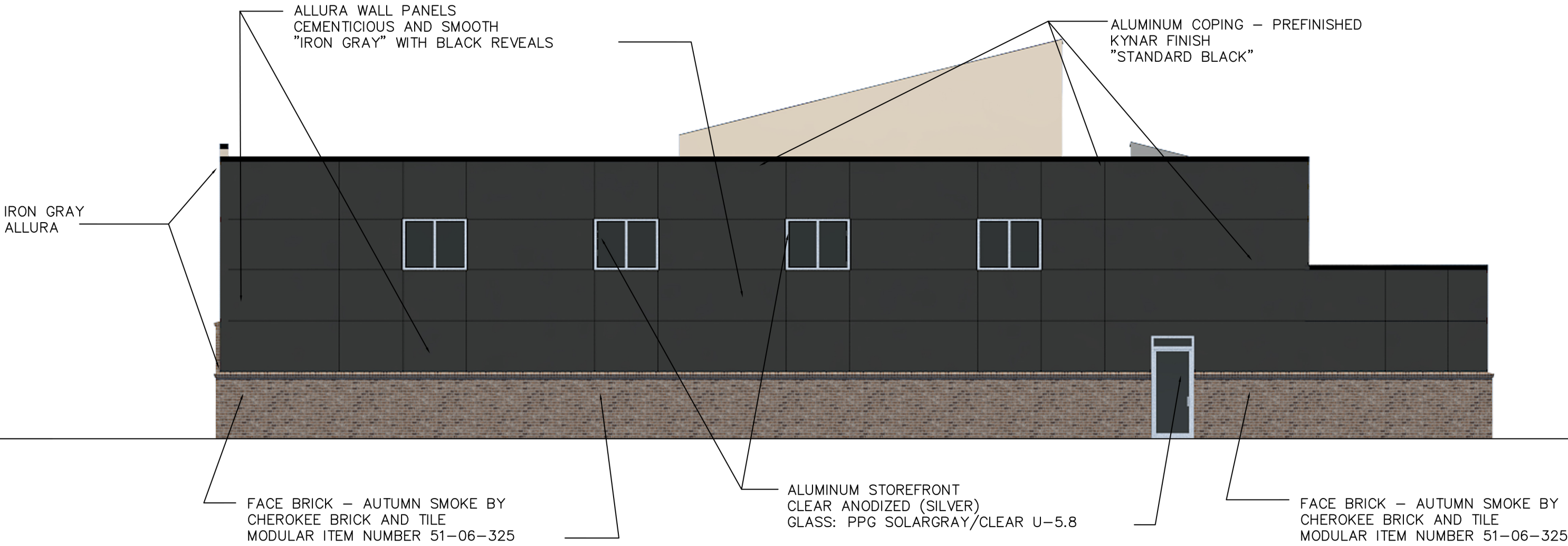
EAST ELEVATION	1125 S.F.	100%
NET OF WALL	1080 S.F.	96%
BRICK MASONRY	370 S.F.	34%
NET WALL PANELS	710 S.F.	66%
NEW METAL CANOPIES	8 S.F.	0%



## ELEVATION

DOWNS BOULEVARD - SOUTH ELEVATION

FRONT ELEVATION	2069 S.F.	100%
NET OF WALL	1663 S.F.	81%
BRICK MASONRY	515 S.F.	31%
NET WALL PANELS	1148 S.F.	62%
NEW METAL CANOPIES	80 S.F.	5%



## ELEVATION

REAR - NORTH ELEVATION

NORTH ELEVATION	2028 S.F.	100%
NET OF WALL	1926 S.F.	95%
BRICK MASONRY	515 S.F.	27%
NET WALL PANELS	1406 S.F.	73%
NEW METAL CANOPIES	0 S.F.	0%

HVAC NOTE  
THE CONTRACTOR SHALL ENSURE THAT ALL ROOFTOP MECHANICAL EQUIPMENT IS COMPLETELY SCREENED BY THE PROPOSED BUILDING PARAPET FROM ALL DIRECTIONS AND OFF SITE VIEWS. THE CHANGE OUT OF ANY EQUIPMENT TO A LARGER DIMENSIONAL HEIGHT OR MOUNTING HEIGHT WILL REQUIRE THAT THE BUILDING PARAPET BE RAISED TO MEET CITY OF FRANKLIN SCREENING REQUIREMENTS.

TEMPLE FITNESS

FRANKLIN, TENNESSEE

W. Michael Stewart  
Architect

1318 Tomahawk Trace Murfreesboro, Tennessee 37129

DESIGN ELEVATION



MARCH 16, 2017  
SCALE: 1/8" = 1'-0"

A-1