

ORDINANCE 2017-10

TO BE ENTITLED: "AN ORDINANCE TO SET NEW SPEED LIMITS ON CAPTAIN FREEMAN PARKWAY IN THE BERRY FARMS SUBDIVISION, RURAL PLAINS SECTION"

WHEREAS, the approved construction plans for Captain Freeman Parkway in the Berry Farms subdivision, Rural Plains section 1, provide for a speed limit of thirty miles per hour (30 MPH), which is the existing posted speed limit; and

WHEREAS, the developer of Rural Plains Section 1 of the Berry Farms subdivision has requested, in a letter, that the City of Franklin consider the reduction of the speed limit on Captain Freeman Parkway from thirty (30) MPH to fifteen (15) MPH; and

WHEREAS, the City of Franklin Municipal Code, Title 3, Section 15-301 (3), provides for a standard speed limit of twenty-five (25) MPH on residential local streets; and

WHEREAS, radar speed studies, conducted in February 2017 by the City of Franklin Engineering Department on Captain Freeman Parkway in Rural Plains Section 1, reveal that the prevailing 85th percentile travel speed is approximately twenty-five (25) miles per hour in both directions; and

WHEREAS, the Engineering Department staff considers that a speed limit revision from thirty (30) MPH to twenty-five (25) MPH conforms to both the Municipal Code and the prevailing 85th percentile speed.

NOW, THEREFORE:

SECTION I: BE IT ORDAINED by the Board of Mayor and Aldermen of the City of Franklin, Tennessee, that the speed limits, in both directions, for Captain Freeman Parkway between Lewisburg Pike and Rural Plains Circle in Rural Plains Section 1 of the Berry Farms subdivision be Twenty-Five Miles Per Hour (25 MPH) as shown in Exhibit A.

SECTION II: BE IT FURTHER ORDAINED by the Board of Mayor and Aldermen of the City of Franklin, Tennessee, that the speed limits, in both directions, for Captain Freeman Parkway between Rural Plains Circle and Goose Creek Bypass in Rural Plains Sections 3 and 8 be Twenty-Five Miles Per Hour (25 MPH) as shown in Exhibit B.

SECTION III: BE IT FURTHER ORDAINED by the Board of Mayor and Aldermen of the City of Franklin, Tennessee, that the penalty for failure to obey the provisions of this Ordinance shall be as indicated in the Franklin Municipal Code and/or the Tennessee Code Annotated.

SECTION IV: BE IT FINALLY ORDAINED by the Board of Mayor and Aldermen of the City of Franklin, Tennessee, that this Ordinance shall take effect from and after its passage on second and final reading, the health, safety, and welfare of the citizens of Franklin requiring it.

ATTEST:

CITY OF FRANKLIN, TENNESSEE:

BY: _____

**ERIC S. STUCKEY
CITY ADMINISTRATOR**

BY: _____

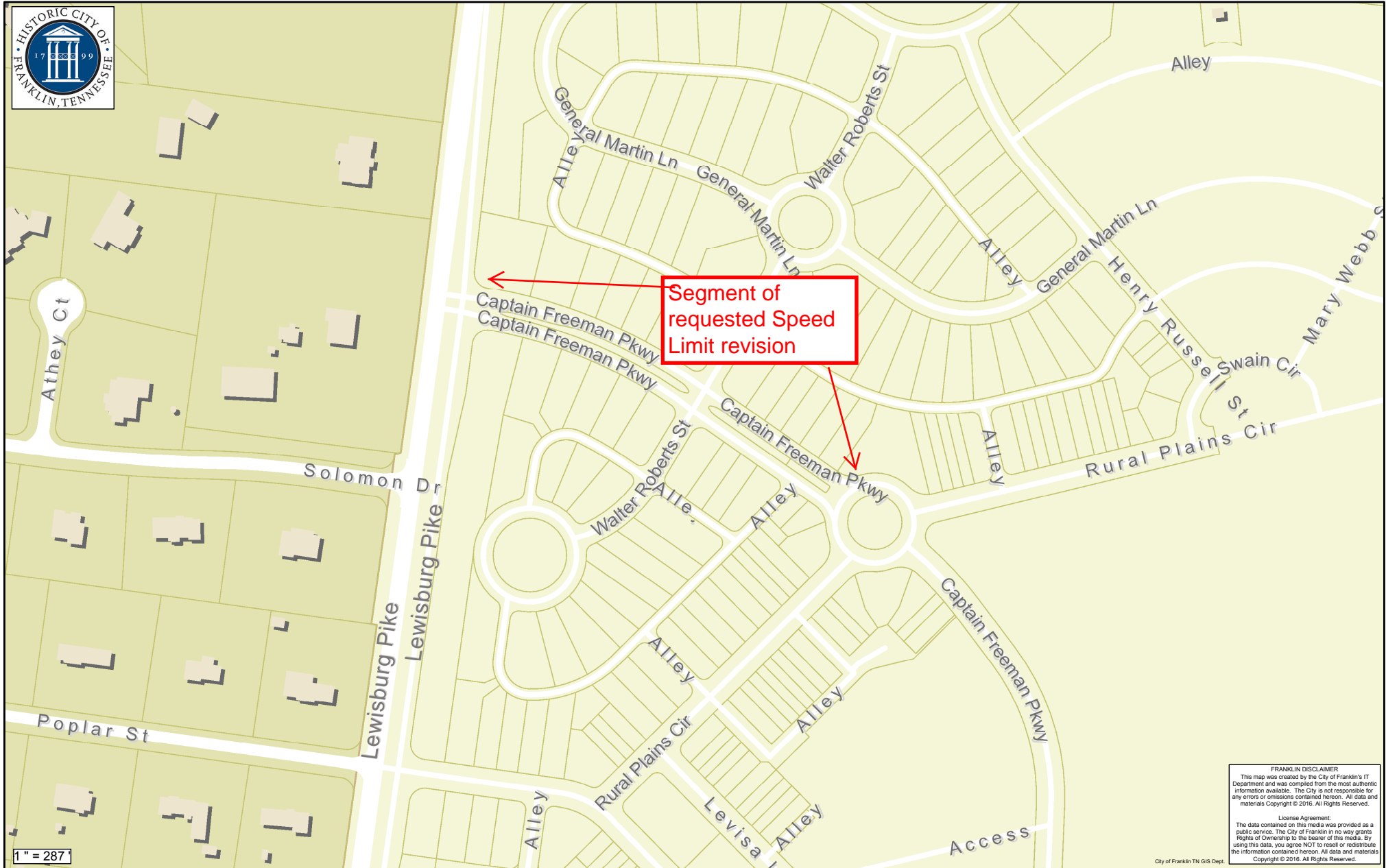
**DR. KEN MOORE
MAYOR**

Approved as to Form:

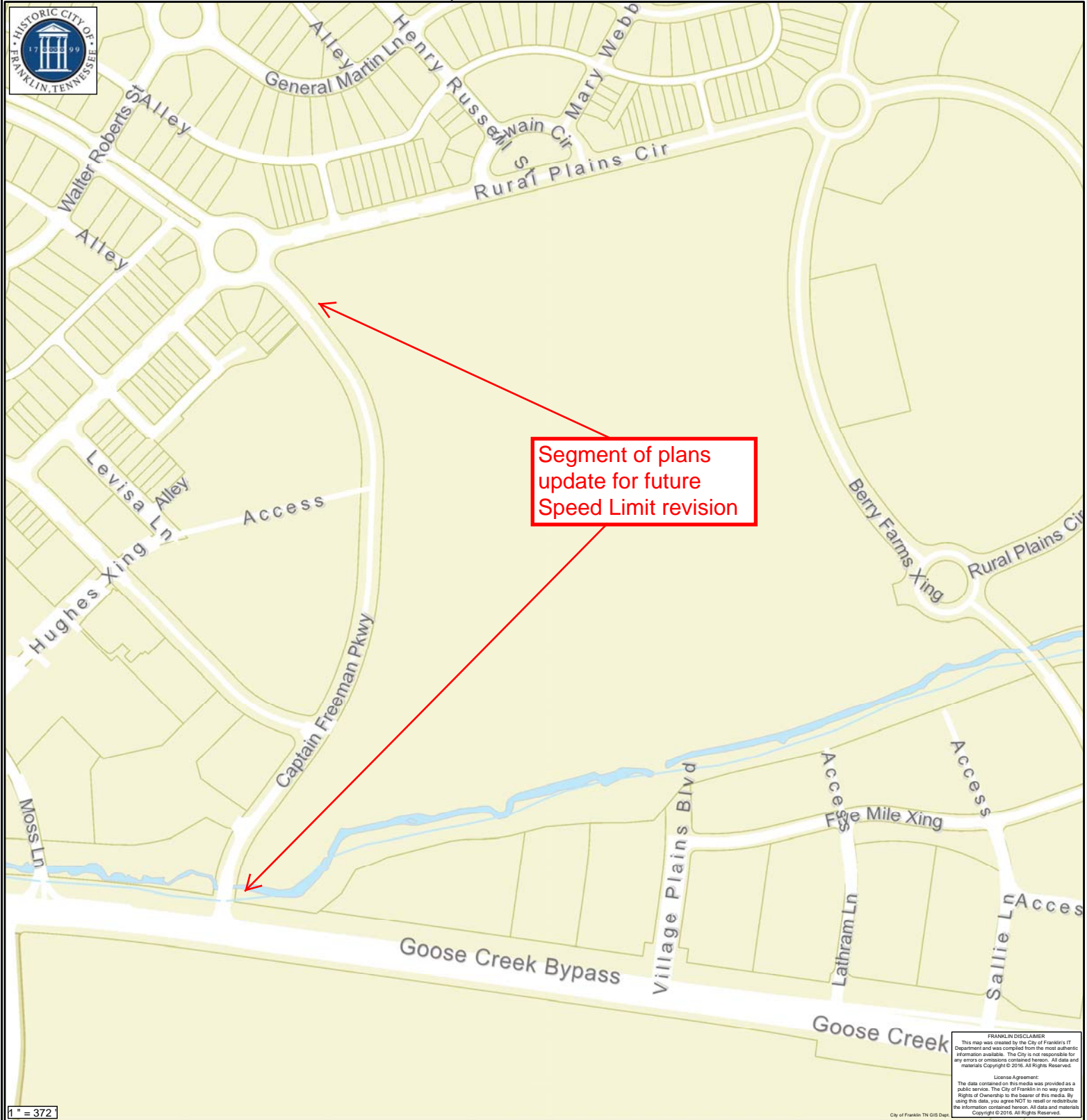
Sauna R. Billingsley, City Attorney

PASSED FIRST READING

PASSED SECOND READING



NOTE: As a high-volume local street, the standard minimum Speed Limit is 25 mph.



Segment of plans
update for future
Speed Limit revision

1" = 372'

FRANKLIN DISCLAIMER
This map was created by the City of Franklin's IT Department and was compiled from the most authentic information available. The City is not responsible for any errors or omissions contained herein. All data and materials Copyright © 2016. All Rights Reserved.

License Agreement:
The data contained on this media was provided as a public service. The City of Franklin in no way grants Rights of Ownership to the bearer of this media. By using this data, you agree NOT to resell or redistribute the information contained herein. All data and materials Copyright © 2016. All Rights Reserved.

City of Franklin TN GIS Dept