



# 1226 Adams Street

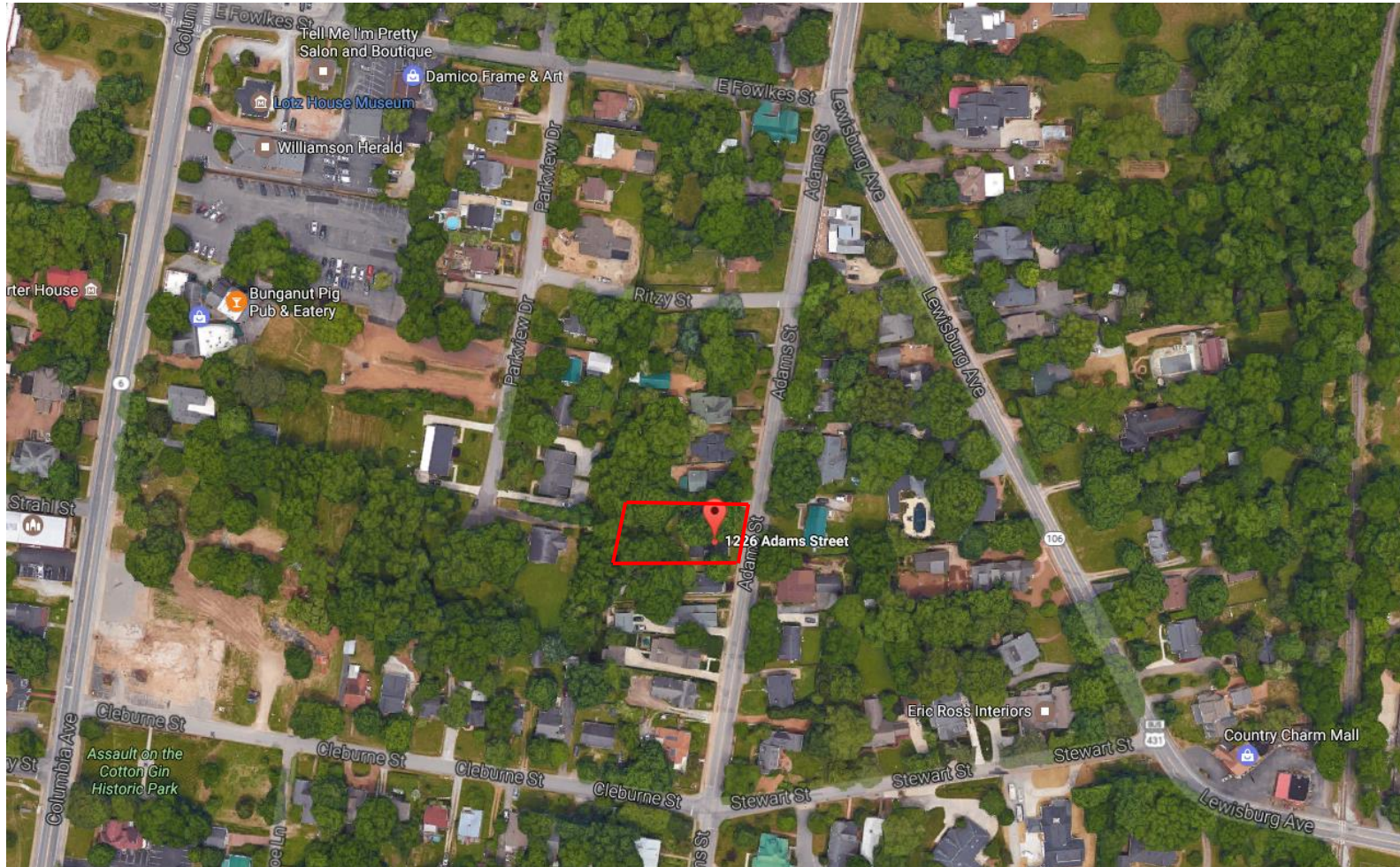
Garden Gate Homes

Crunk Engineering

Burke Coffey Architecture | Design



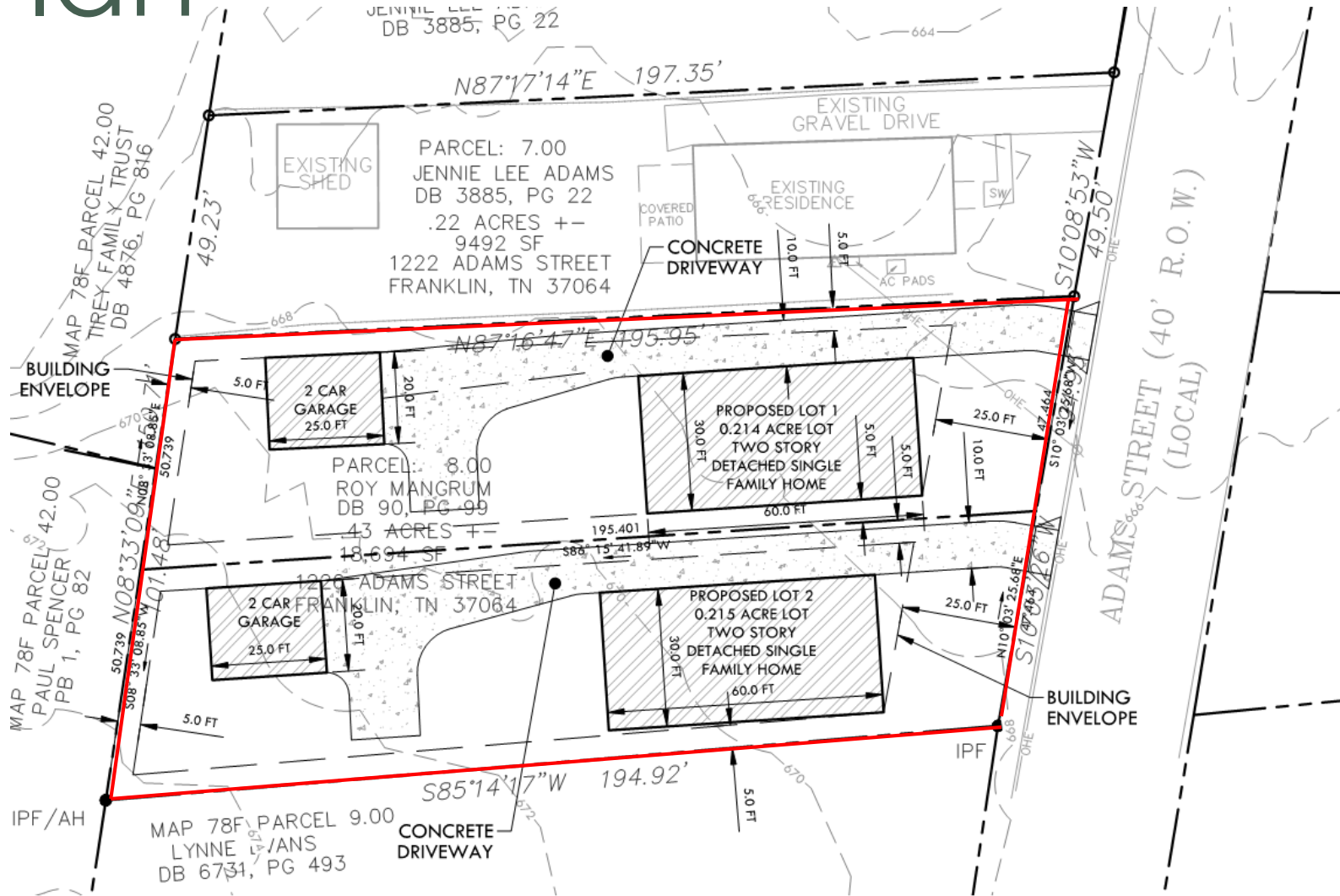
# Project Location



# Project Overview

- Currently Zoned R3
- Proposed Rezoning to Specific Development – Residential 4.7
- Total of 2 New Single Family Detached Homes on 0.429 acres
- 4.7 units/ac.
- Each lot is over 9,000 sf
- Lot frontage of 47.5 feet – neighboring lots have 48 and 49 feet of frontage.
- New homes will be 2,500 sf to 3,000 sf in size

# Site Plan





# Elevation Concepts



*1 - Front Elevation*