

# FY2017 PROGRAM ENHANCEMENT REQUEST FORM



Department Priority: **1** of **1**

Department: **41350 INFORMATION TECHNOLOGY (IT)**  
 Division:  
 Title: **GPS/GIS Tech**

Purpose: Use this form to spell out your request for additional personnel and/or programs. We will work with you to tally the requests and create a prioritized list.

## REQUESTED PROGRAM ENHANCEMENT FUNDING

Account Description	One-Time Cost (FY17 Only)	Ongoing Annual Cost (FY17 & Future)	TOTAL FY17 Request
<b>Compensation</b>			
81110 REGULAR PAY		\$42,828	\$42,828
		\$0	\$0
<b>Benefits</b>			
<i>Benefits auto-calculated at 30% of compensation --&gt;&gt;</i>			
	\$0	\$0	\$12,848
<b>Expenses</b>			
83000 SUPPLIES			\$1,500
			\$0
			\$0
			\$0
			\$0
			\$0
			\$0
			\$0
			\$0
			\$0
			\$0
			\$0
			\$0
<b>TOTAL</b>	<b>\$0</b>	<b>\$42,828</b>	<b>\$57,176</b>

## PURPOSE / DESCRIPTION OF REQUEST

**The cost for one-half year would be \$27,838 in Personnel & Benefits and \$1,500 in Expenses for a total of \$29,338. This cost is proposed to be split one-half between the General Fund and the Water & Wastewater Fund.**

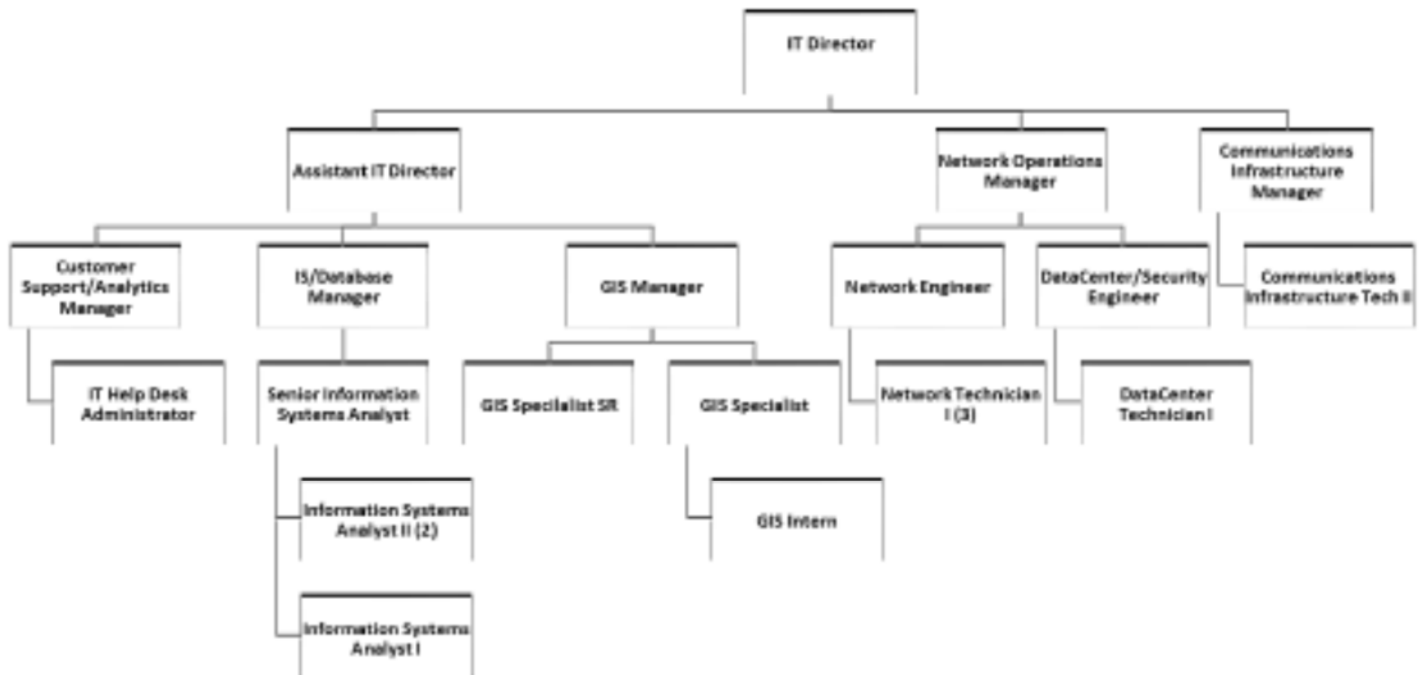
GPS/GIS Tech - Pay Grade E

With the City joining in the Tennessee OneCall system, it's more important now than ever to make sure all city assets are properly GPS'ed. Adding a position in the GIS division would give IT the ability to GPS city assets and properly get them into the GIS system and into our asset management system. In addition, this position would be used to confirm as-builts received from developers on new subdivisions.

## SERVICE IMPLICATION

Failure to add this position will inhibit the City's abilities to service the One-Call System and maintain its existing GIS operations.

## Existing Organizational Chart



## Proposed Organizational Chart

