

**BASE4**

BASE4  
9858 GLADES ROAD, #237  
BOCA RATON, FLORIDA 33434  
1.720.72BASE4  
www.base-4.com

Seal

RICK MUNIZ, AIA  
1025 NW 31ST AVE  
POMPANO BEACH, FL 33069

Owner:



District L... Gr...  
1202 W... Dr  
F... ND 58103



**HYATT HOUSE**  
Franklin, TN  
3685 Mallory Lane

ISSUE DATE	PROJECT STATUS

DATE 2016.11.03

DRAWN BY SHK

CHECKED BY XXX

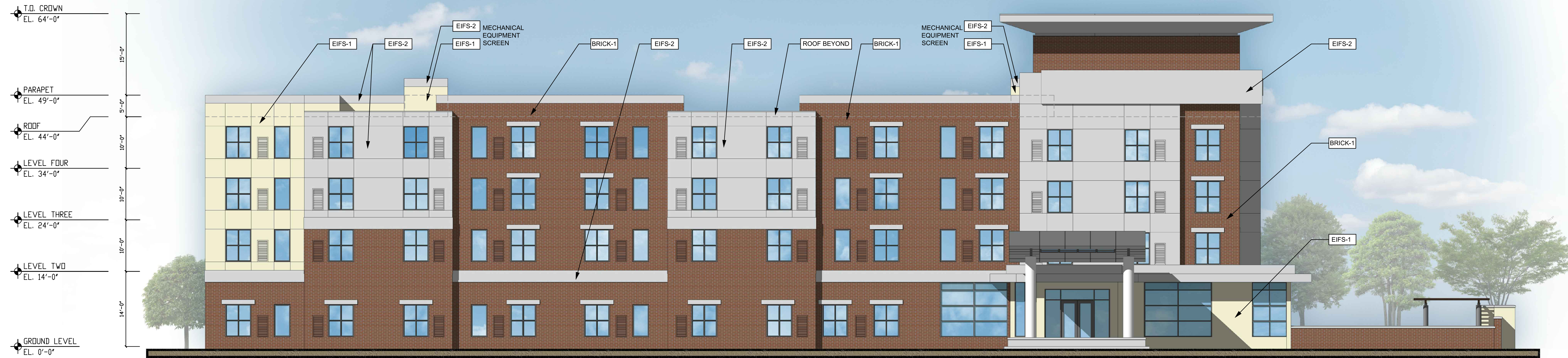
SCALE AS NOTED

PROJECT NO. B4-124-1602

SHEET NAME

**EXTERIOR COLORED ELEVATIONS**

DRAWING NO.



**1 FRONT ELEVATION**  
SCALE : 3/32" = 1'-0"



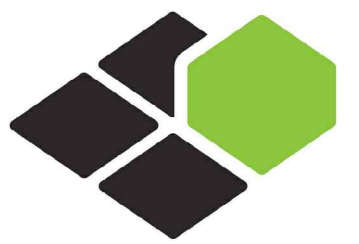
**2 RIGHT SIDE ELEVATION**  
SCALE : 3/32" = 1'-0"

FRONT FACADE			RIGHT FACADE		
MATERIAL	SURFACE AREA (SF)	% OF NET FACADE	MATERIAL	SURFACE AREA (SF)	% OF NET FACADE
GROSS FACADE	10,995		GROSS FACADE	9,731	
WINDOWS/DOORS	2,553		WINDOWS/DOORS	1,708	
NET FACADE	8,442	100%	NET FACADE	8,023	100%
EIFS	3,942	47%	EIFS	4,818	58%
BRICK	4,500	53%	BRICK	3,405	42%

EXTERIOR FINISH SCHEDULE		
GRAPHIC	KEY	FINISH
	EIFS-1	DRIVIT "SANDEBBLE" FINISH CONTROL COLOR: 463A "STEPH'S MOOD"
	EIFS-2	DRIVIT "SANDEBBLE" FINISH CONTROL COLOR: 627A "TWILIGHT GRAY"
	BRICK-1	HABRON MAROON
STOREFRONT		TO MATCH ADJACENT COLOR
WINDOW FRAMES & INTERGRAL PTAC GRILLES		TO MATCH ADJACENT COLOR
DOORS & FRAMES		TO MATCH ADJACENT COLOR
WALL LOUVERS		TO MATCH ADJACENT COLOR

CHANGES TO ELEVATIONS:  
 1. THESE ELEVATIONS HAVE BEEN DESIGNED TO MEET THE REQUIREMENTS OF THE CITY OF FRANKLIN ARCHITECTURAL DESIGN STANDARDS AND THE APPROVAL OF THE PLANNING COMMISSION/CITY OF FRANKLIN.  
 2. CHANGES SHALL NOT BE MADE TO THE APPROVED ELEVATIONS UNLESS APPROVED BY EITHER THE BUILDING AND NEIGHBORHOOD SERVICES DIRECTOR OR THE PLANNING COMMISSION.

HVAC UNITS:  
 ROOFTOP  
 GROUND  
 NONE PROVIDED



**BASE4**

BASE4  
9858 GLADES ROAD, #237  
BOCA RATON, FLORIDA 33434  
1.720.72BASE4  
www.base-4.com

Seal

RICK MUNIZ, AIA  
1025 NW 31ST AVE  
POMPANO BEACH, FL 33069

Owner:



Dakota Legacy Group  
1202 Woodruff Dr  
Fargo, ND 58103



**HYATT HOUSE**  
Franklin, TN  
3685 Mallory Lane

ISSUE DATE	PROJECT STATUS

DATE 2016.11.03

DRAWN BY SHK

CHECKED BY XXX

SCALE AS NOTED

PROJECT NO. B4-124-1602

SHEET NAME

**EXTERIOR COLORED ELEVATIONS**

DRAWING NO.



**3 REAR ELEVATION**  
SCALE : 3/32" = 1'-0"



**4 LEFT SIDE ELEVATION**  
SCALE : 3/32" = 1'-0"

MATERIAL	SURFACE AREA (SF)	% OF NET FACADE
GROSS FACADE	14,778	
WINDOWS/DOORS	1,495	
NET FACADE	13,283	100%
EIFS	5,810	44%
BRICK	7,473	56%

MATERIAL	SURFACE AREA (SF)	% OF NET FACADE
GROSS FACADE	9,832	
WINDOWS/DOORS	1,148	
NET FACADE	8,686	100%
EIFS	5,363	62%
BRICK	3,323	38%

GRAPHIC	KEY	FINISH
	EIFS-1	DRIVIT "SANDPEBBLE" FINISH CONTROL COLOR: 463A "STEPHY'S MOOD"
	EIFS-2	DRIVIT "SANDPEBBLE" FINISH CONTROL COLOR: 627A "TWILIGHT GRAY"
	BRICK-1	HABRON MAROON
STOREFRONT		TO MATCH ADJACENT COLOR
WINDOW FRAMES & INTERGRAL PTAC GRILLES		TO MATCH ADJACENT COLOR
DOORS & FRAMES		TO MATCH ADJACENT COLOR
WALL LOUVERS		

CHANGES TO ELEVATIONS:  
1. THESE ELEVATIONS HAVE BEEN DESIGNED TO MEET THE REQUIREMENTS OF THE CITY OF FRANKLIN ARCHITECTURAL DESIGN STANDARDS AND THE APPROVAL OF THE PLANNING COMMISSION/ CITY OF FRANKLIN.  
2. CHANGES SHALL NOT BE MADE TO THE APPROVED ELEVATIONS UNLESS APPROVED BY EITHER THE BUILDING AND NEIGHBORHOOD SERVICES DIRECTOR OR THE PLANNING COMMISSION.

HVAC UNITS:  
HVAC UNITS, COOLING AND/OR MECHANICAL UNITS ARE LOCATED ON THE:  
 ROOFTOP  
 GROUND  
 NONE PROVIDED