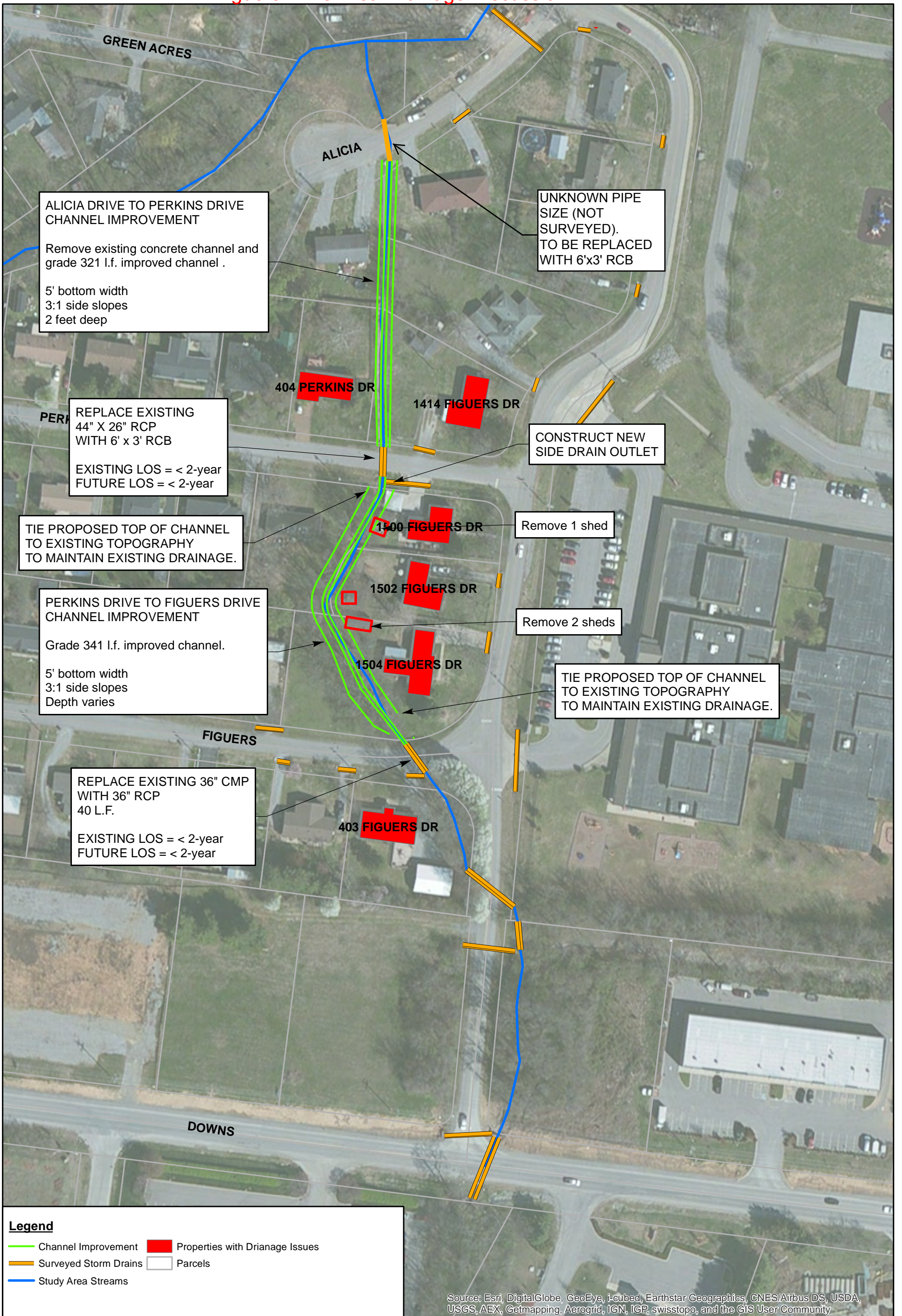


**Figuers Drive Area Drainage Discussion - EXHIBIT D**



NOT TO SCALE

CITY OF FRANKLIN  
 FIGUERS DRIVE DRAINAGE STUDY



RECOMMENDED  
 DRAINAGE IMPROVEMENTS

OPTION 1

EXHIBIT 1

October, 2014

## Figuers Drive Area Drainage Discussion - EXHIBIT D

<b>FIGUERS DRIVE - EAST</b>				
<b>OPTION 1 - CROSS DRAIN UPGRADES AND CHANNEL IMPROVEMENT</b>				
ADDRESS	FFE (1)	LAG	EXISTING LAG SUBMERGENCE EVENT (2)	FUTURE LAG SUBMERGENCE EVENT (2)
403 Figuers Drive	682.93	680.34	100-year	100-year
1504 Figuers Drive	680.16	676.49	2-year	10-year
1502 Figuers Drive	678.03	675.09	< 2-year	10-year
1500 Figuers Drive	678.16	675.09	< 2-year	10-year
1414 Figuers Drive	673.2	672.88	< 2-year	< 2-year
404 Perkins Drive	678.7	674.46	100-year	100-year
<b>Drainage Improvements:</b>				
<ol style="list-style-type: none"> <li>1) Channel improvement from Alicia Drive to Figuers Drive.</li> <li>2) Culvert Upgrades at Perkins Drive and Figuers Drive.</li> </ol>				
<b>Design Constraints</b>				
<ol style="list-style-type: none"> <li>1) Can not lower right bank elevation with out increasing LAG submergence.</li> <li>2) Match existing channel invert elevations</li> <li>3) Channel improvement using a 5 foot bottom width and 3:1 side slopes to daylight.</li> <li>4) Minor channel realignment required.</li> </ol>				
<b>Notes:</b>				
<p>(1) FFE is the surveyed Finished Floor Elevation</p> <p>(2) LAG submergence is based on the Low Adjacent Grade (LAG) elevation.</p> <p>(3) The information shown above is based on the hydraulic properties of the stream and cross drains.</p>				
<p><b><u>This information does not account for nuisance flooding caused by local drainage issues from adjacent private properties.</u></b></p>				