

## BUILDING INFORMATION

### Square Footage & Occupant Load

Lower Level –  
12,725 sf @ 100 sf per person = 128 occupants

1st Floor –  
43,928 SF @ 100 sf per person = 440 occupants

2nd Floor –  
38,370 sf @ 100 sf per person = 384 occupants

3rd Floor –  
26,229 sf @ 100 sf per person = 263 occupants

Total Building Square Footage: 121,252 square feet

### Code Information

Group - B, Business  
Occupancy - Business & Ambulatory Care Facility  
Construction Type - IIA  
Building Height - 71'-8"

### Schedule Information

Anticipated Groundbreaking October 2017  
Anticipated Certificate of Occupancy December 2018



## ARCHITECTURAL RENDERING

## ARCHITECTURAL DESIGN CONCEPT AND INTENT

### Project Overview:

This project consists of the design and construction of a proposed new medical office building for Williamson Medical Center. This building will be situated on the existing Williamson Medical campus.

The new facility will be four stories and will be approximately 121,000 square feet. The building will be structured to grow an additional two stories. The highest occupied floor form the lowest level of fire department access with the future additional floors will be 71'-8" and therefore will not fall under the requirements of high rise design per the 2012 IBC.

Goals for this project are to program, design, and deliver a state-of-the-art, patient-centered facility that enhances the existing site and surroundings. This new facility will feature sensitive architectural design that complements the architecture on the rest of the campus. The design concept for this building, like the west tower constructed in 2015, is "destination Franklin" which is achieved through use of brick and stone materials and sloping roofs at feature elements around the building.

# ESa

ESa Architects

richard l. miller, architect  
1033 Demonbreun Street  
Suite 800  
Nashville Tennessee 37203  
615-329-9445

This drawing and the design shown is the property of the architect. The reproduction, copying or use of this drawing without their written consent is prohibited and any infringement will be subject to legal action.

© ESa Architects 2015

Seals



WILLIAMSON MEDICAL CENTER  
MOB  
Franklin, TN



### DOCUMENT CHANGES

Description	Date
REVISION 3	07.06.17

### Issue Description

PUD DEVELOPMENT

Original Issue Date 06.12.17

Project No COF#6474

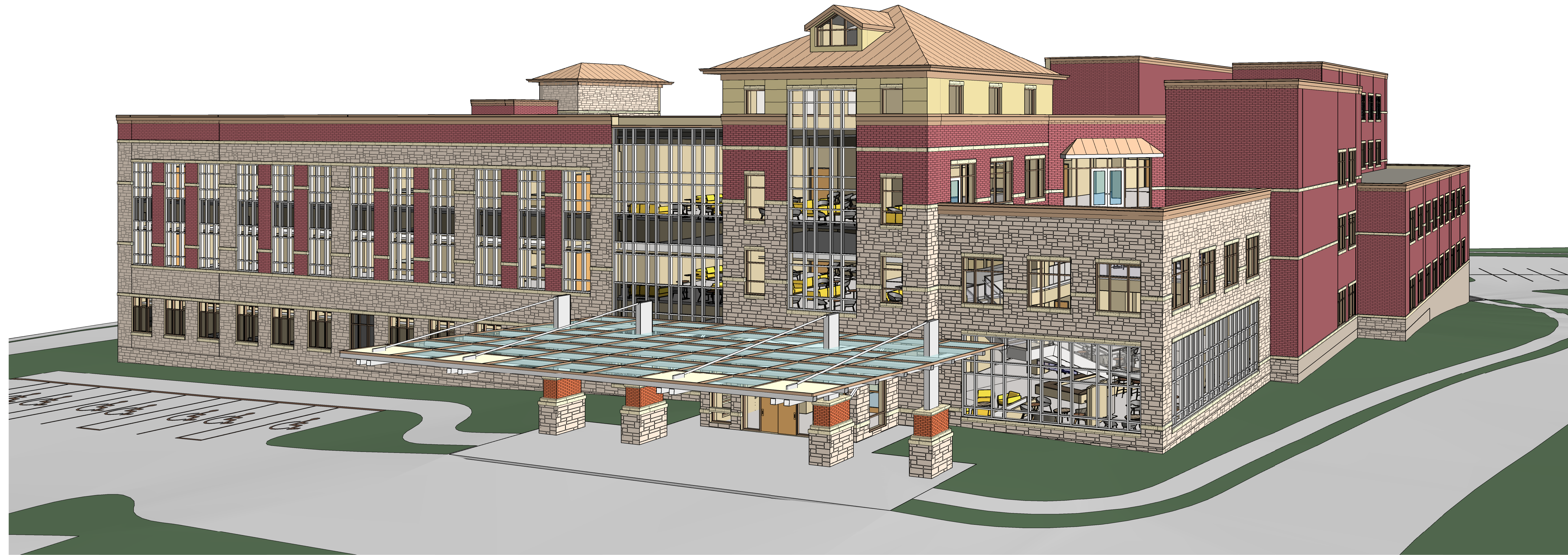
Drawn By VLP Checked By VLP

Drawing Title

ARCHITECTURAL  
RENDERING AND  
NARRATIVE

Sheet Number

# C2.2



**1 FRONT PERSPECTIVE**  
NOT TO SCALE



**2 NORTHEAST PERSPECTIVE**  
NOT TO SCALE

C:\Renal\_Projects\16155.01\_WMC Clinic & ASC - Interior Buildout\_A16\_Central\_vicinity.rvt

6/20/17 9:20:56 AM

**ESa**

ESa Architects

richard l. miller, architect  
1033 Demonbreun Street  
Suite 800  
Nashville Tennessee 37203  
615-329-9445

This drawing and the design shown is the property of the architect. The reproduction, copying or use of this drawing without their written consent is prohibited and any infringement will be subject to legal action.

© ESa Architects 2015

Seals



**WILLIAMSON MEDICAL CENTER  
MOB**

Franklin, TN



DOCUMENT CHANGES

Description	Date
REVISION 3	07.06.17

Issue Description PUD DEVELOPMENT

Original Issue Date 06.12.17

Project No COF#6474

Drawn By JF | Checked By VLP

Drawing Title

ARCHITECTURAL 3D  
VIEWS

Sheet Number

**C2.21**



**1** SOUTHEAST PERSPECTIVE  
NOT TO SCALE



**2** SOUTHWEST PERSPECTIVE  
NOT TO SCALE

**WILLIAMSON MEDICAL CENTER  
MOB**

Franklin, TN



DOCUMENT CHANGES

Description	Date
REVISION 3	07.06.17

Issue Description PUD DEVELOPMENT

Original Issue Date 06.12.17

Project No COF#6474

Drawn By JF | Checked By VLP

Drawing Title

ARCHITECTURAL 3D  
VIEWS

Sheet Number

**C2.22**



**WILLIAMSON MEDICAL CENTER  
MOB**

Franklin, TN



DOCUMENT CHANGES

Description	Date
REVISION 3	07.06.17

Issue Description PUD DEVELOPMENT

Original Issue Date 06.12.17

Project No COF#6474

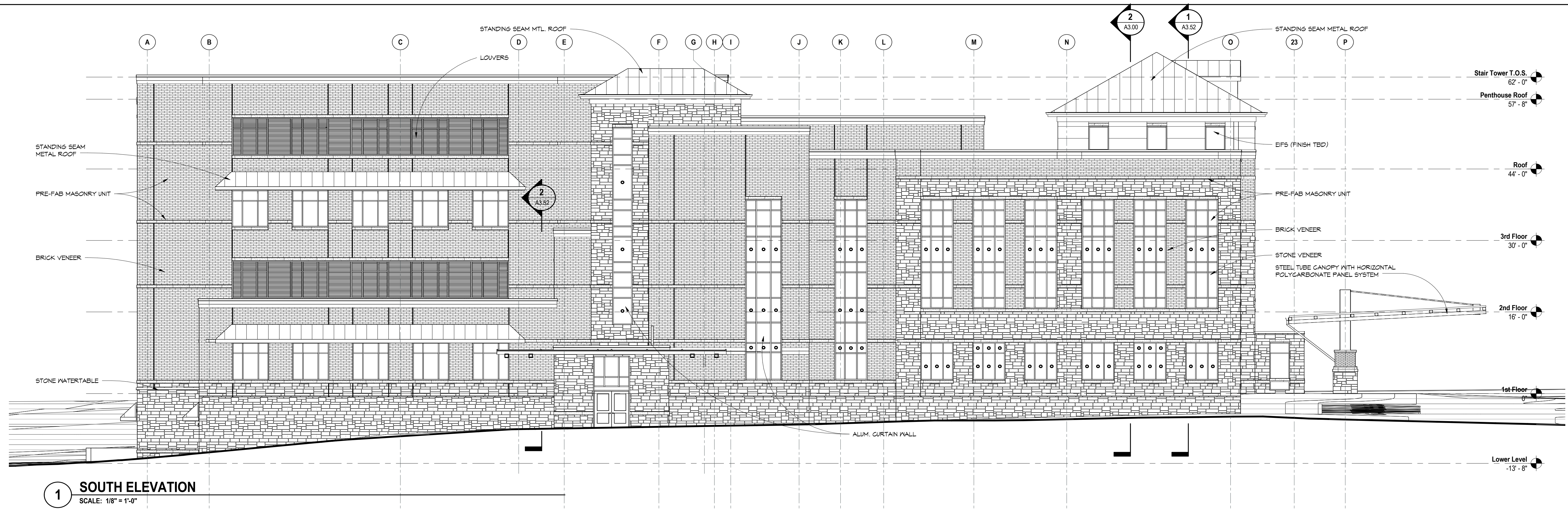
Drawn By JF Checked By VLP

Drawing Title

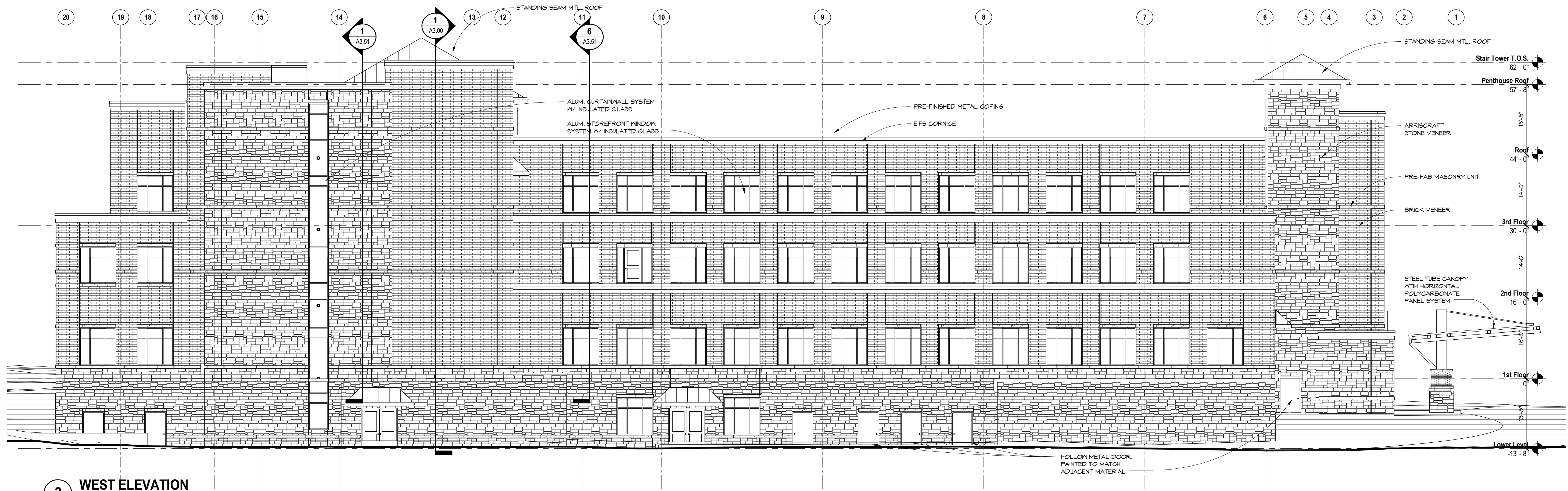
**ARCHITECTURAL  
ELEVATIONS**

Sheet Number

**C2.3**



**1 SOUTH ELEVATION**  
SCALE: 1/8" = 1'-0"



**2 WEST ELEVATION**  
SCALE: 1/8" = 1'-0"

ELEVATION MATERIAL LEGEND			
PATTERN	MATERIAL	PATTERN	MATERIAL
	BRICK		METAL PANEL
	ACCENT BRICK		OPERABLE WINDOW
	EIFS		ARRISGRAFT STONE VENEER
	SPANDREL GLASS PANEL		WINDOW TO HAVE INTEGRAL BLINDS



**WILLIAMSON MEDICAL CENTER  
MOB**

Franklin, TN



DOCUMENT CHANGES

Description	Date
REVISION 3	07.06.17

Issue Description PUD DEVELOPMENT

Original Issue Date 06.12.17

Project No COF#6474

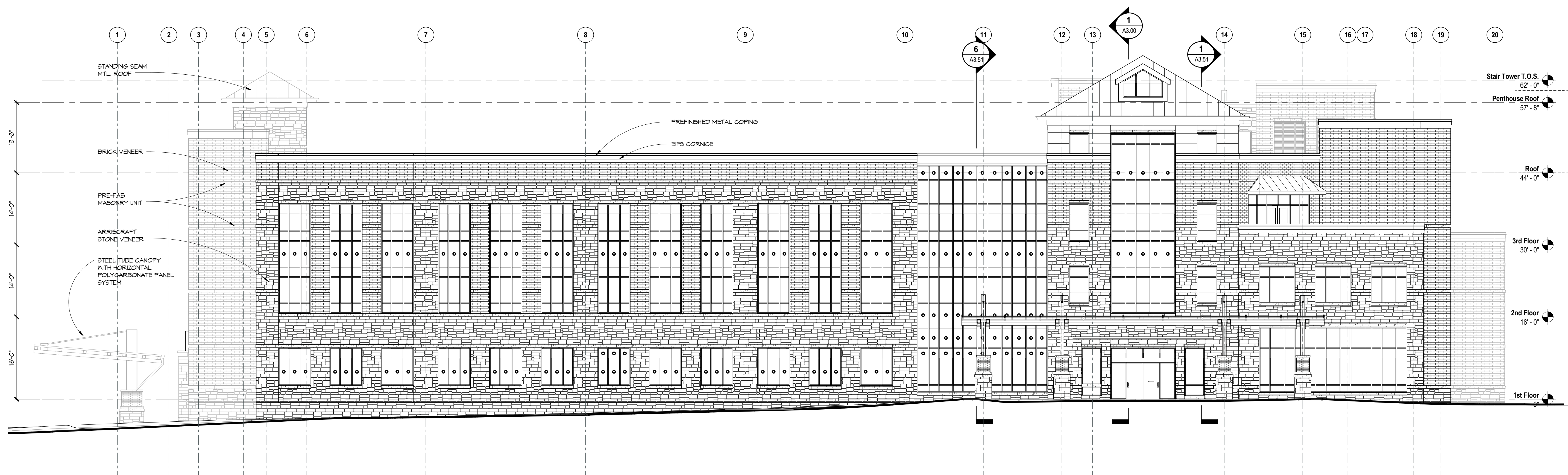
Drawn By JF Checked By VLP

Drawing Title

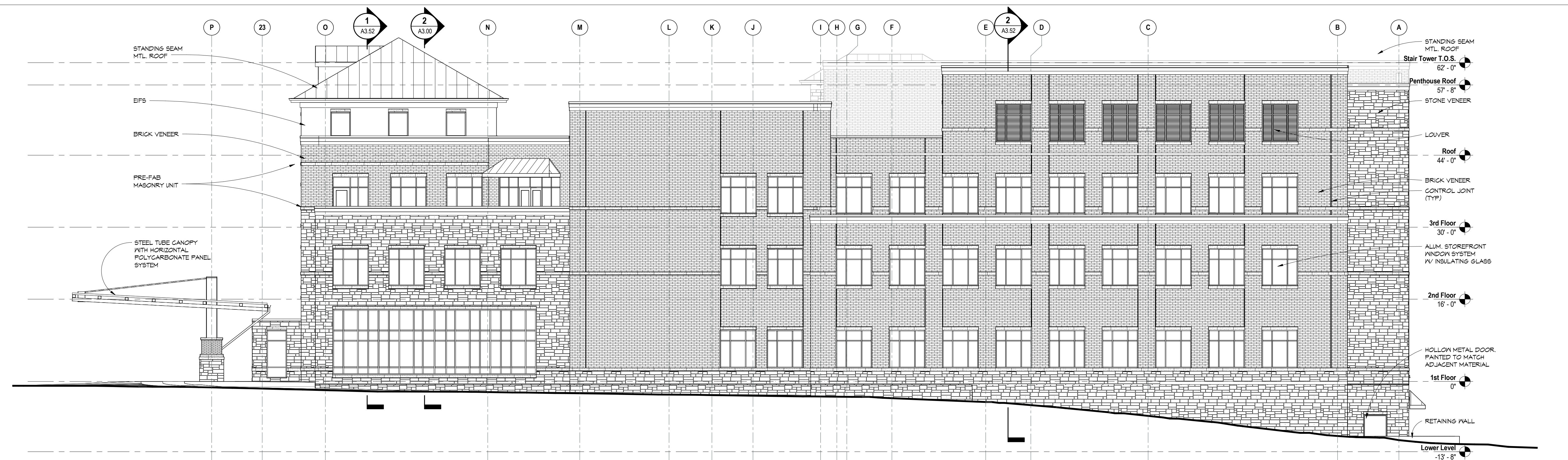
**ARCHITECTURAL  
ELEVATIONS**

Sheet Number

**C2.32**



**1 EAST ELEVATION**  
SCALE: 1/8" = 1'-0"



**4 NORTH ELEVATION**  
SCALE: 1/8" = 1'-0"

ELEVATION MATERIAL LEGEND			
PATTERN	MATERIAL	PATTERN	MATERIAL
	BRICK		METAL PANEL
	ACCENT BRICK		OPERABLE WINDOW
	EIFS		ARRISCRAFT STONE VENEER
	SPANDREL GLASS PANEL		WINDOW TO HAVE INTEGRAL BLINDS