

Long Ln

Peytonsville Rd

0.90 AC (abandoned right-of-way)

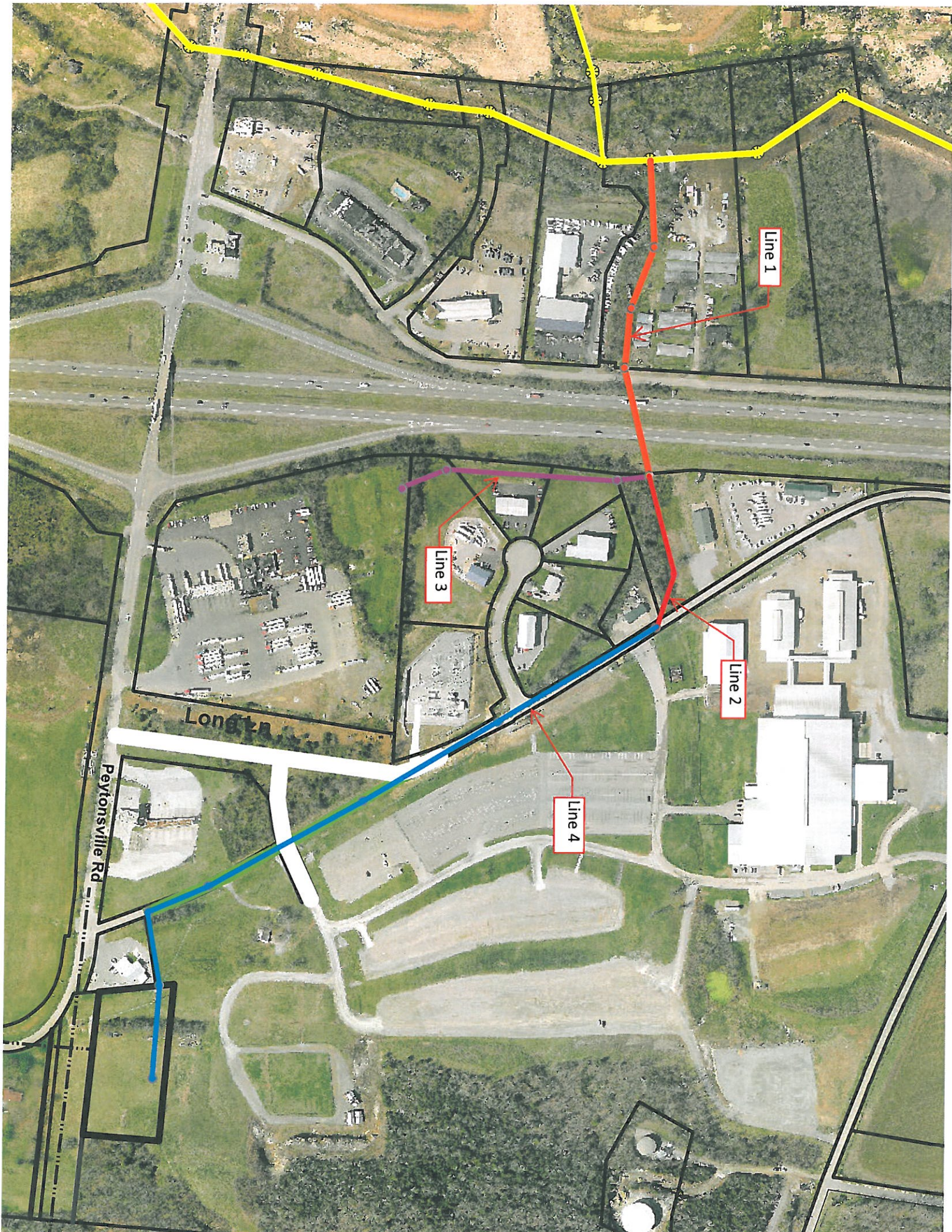
0.3 Acres (abandoned right-of-way)

2.5 AC Proposed Site

1.66 AC Future ROW

Future Centerline of Peytonsville Rd

0.37 AC Future ROW



Line 1

Line 3

Line 2

Line 4

Long Ln

Peytonsville Rd