

**RESOLUTION 2020-12**

**A RESOLUTION TO REVISE THE ORGANIZATIONAL CHART WITHIN THE SANITATION AND ENVIRONMENTAL SERVICES DEPARTMENT**

**WHEREAS**, the Board of Mayor and Aldermen established the annual budget for the City of Franklin for the Fiscal Year 2019-2020, by Ordinance 2019-17, effective July 1, 2019; and

**WHEREAS**, the Sanitation & Environmental Services Director desires to adjust the Organizational Chart of the Sanitation & Environmental Services Department; and

**WHEREAS**, with respect to the Sanitation & Environmental Services Department the reorganization will provide for greater efficiency and improved management of qualified staff to perform the vital functions of routing and administrative support of sanitation services; and

**WHEREAS**, the Board of Mayor and Aldermen desires to support the minor reorganizations of the Sanitation & Environmental Services Department to include this initiative as there would be no increase in anticipated costs for FY 2020; and

**WHEREAS**, the Board of Mayor and Aldermen believes it is in the best interest of the City of Franklin to adopt such change.

**NOW, THEREFORE, BE IT RESOLVED** by the Board of Mayor and Aldermen for the City of Franklin as follows:

**Section 1.** The City of Franklin hereby adopts the amended Organization and Personnel Charts for the Sanitation & Environmental Services Department, to be incorporated within the FY 2019-20 Budget, as shown in Exhibit A, attached, with the following:

- a. the elimination of one (1) SES Crew Supervisor position and the addition of one (1) new Technical Support Specialist I position and
- b. the elimination of one (1) Administrative Secretary position and the addition of one (1) new Administrative Assistant position,

all without amending the expenditures currently adopted in the FY 2019-20 Budget.

**Section 2.** That the Resolution shall be effective upon adoption.

**IT IS SO RESOLVED AND DONE** on this \_\_\_\_\_ day of \_\_\_\_\_ 2020.

ATTEST

CITY OF FRANKLIN, TENNESSEE

By: \_\_\_\_\_

By: \_\_\_\_\_

ERIC S. STUCKEY  
City Administrator

DR. KEN MOORE  
Mayor

Approved as to Form

By: \_\_\_\_\_

Sauna R. Billingsley  
City Attorney



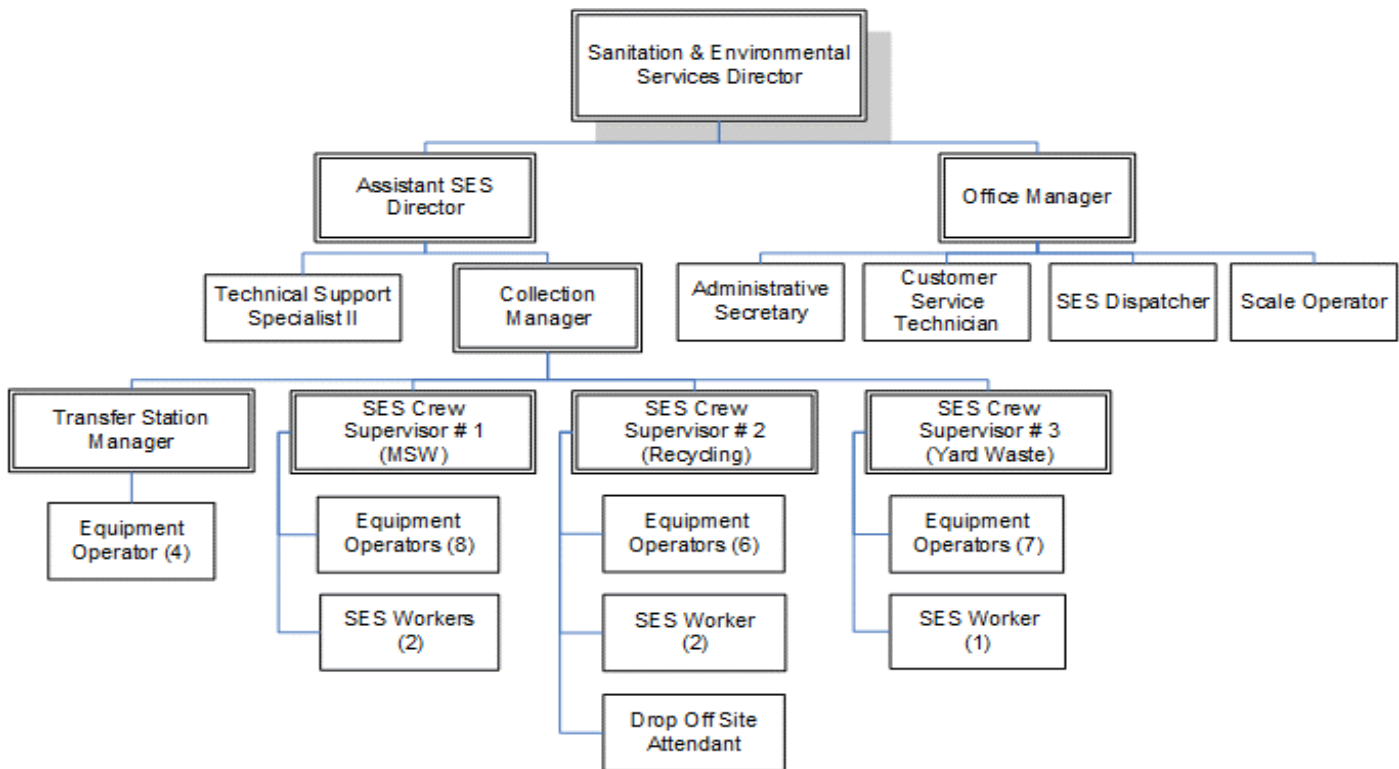
**Performance Measures (Current)**

	Reach 60% participation by 2020 in the residential curbside recycling program by increasing 3% annually the household refuse stops made by the City of Franklin.	59%	60%	62%	62%	TBD
	<b>Target</b>	<b>55%</b>	<b>58%</b>	<b>61%</b>	<b>64%</b>	<b>TBD</b>
	<b>Meets Target?</b>	<b>Yes</b>	<b>Yes</b>	<b>Yes</b>	<b>TBD</b>	<b>TBD</b>

**Franklin Citizens Survey**

	2016 Citizens Survey		2019 Citizens Survey	
	Excellent/Good	Fair/Poor	Excellent/Good	Fair/Poor
<input checked="" type="checkbox"/> % rating the quality of Garbage collection	91%	9%	90%	10%
<input checked="" type="checkbox"/> % rating the quality of Recycling	76%	24%	82%	18%
<input checked="" type="checkbox"/> % rating the quality of Yard waste pick-up	85%	15%	87%	13%

**Organizational Chart (Current)**



*Note: For detailed counts and authorized positions, please see following page entitled "Staffing by Position"*



**City of Franklin, Tennessee**  
**FY 2020 Operating Budget**

Res 2020-12  
 Exhibit A

**Staffing by Position (Current)**

Position	Pay Grade	FY 2016		FY 2017		FY 2018		FY 2019		FY 2020	
		F-T	P-T	F-T	P-T	F-T	P-T	F-T	P-T	F-T	P-T
<b>Administration</b>											
San. & Env. Services Director	K	1	0	1	0	1	0	1	0	1	0
Assistant SES Director	I	1	0	1	0	1	0	1	0	1	0
Office Manager	F	1	0	1	0	1	0	1	0	1	0
Technical Support Specialist II	F	0	0	0	0	0	0	1	0	1	0
Technical Support Specialist I	E	1	0	1	0	1	0	0	0	0	0
Customer Services Technician	D	1	0	1	0	1	0	1	0	1	0
HHW Drop Off Site Attendant	C	1	0	1	0	1	0	1	0	1	0
Scale Operator	C	0	0	0	0	0	0	0	0	1	0
Administrative Secretary	B	1	0	1	0	1	0	1	0	1	0
Administrative Assistant	N/A	0	0	0	0	0	0	0	0	0	0
<b>Totals</b>		<b>7</b>	<b>0</b>	<b>7</b>	<b>0</b>	<b>7</b>	<b>0</b>	<b>7</b>	<b>0</b>	<b>8</b>	<b>0</b>

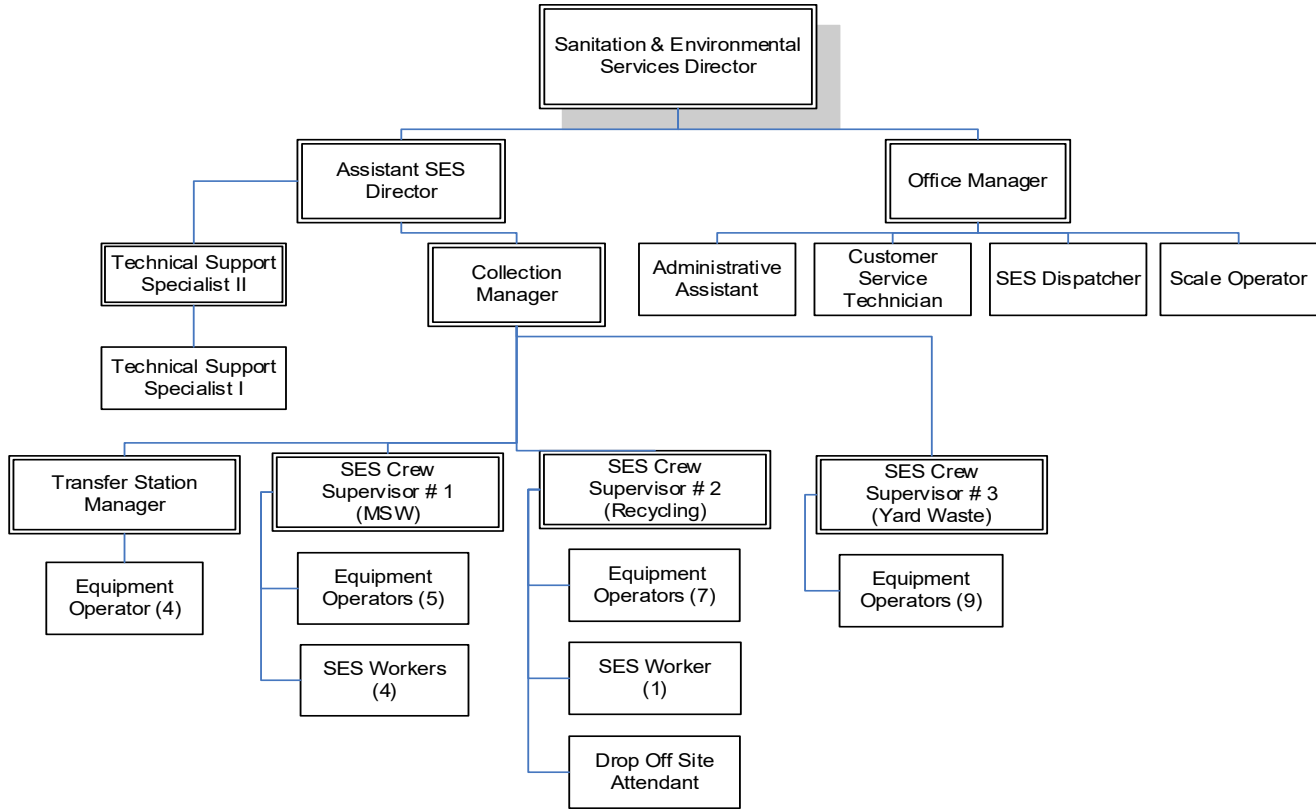
<b>Collection</b>											
Collection Manager	G	1	0	1	0	1	0	1	0	1	0
SES Crew Supervisor	E	4	0	4	0	4	0	4	0	4	0
SES Equipment Operator	D	21	0	21	0	21	0	21	0	21	0
HHW Drop Off Site Attendant	C	0	0	0	0	0	0	0	0	0	0
SES Dispatcher	C	1	0	1	0	1	0	1	0	1	0
SES Worker	B	9	2	5	0	5	0	5	0	5	0
<b>Totals</b>		<b>36</b>	<b>2</b>	<b>32</b>	<b>0</b>	<b>32</b>	<b>0</b>	<b>32</b>	<b>0</b>	<b>32</b>	<b>0</b>

<b>Disposal</b>											
Transfer Station Manager	F	1	0	1	0	1	0	1	0	1	0
Equipment Operator	D	4	0	4	0	4	0	4	0	4	0
Scale Operator	C	1	0	1	0	1	0	1	0	0	0
<b>Totals</b>		<b>6</b>	<b>0</b>	<b>6</b>	<b>0</b>	<b>6</b>	<b>0</b>	<b>6</b>	<b>0</b>	<b>5</b>	<b>0</b>

<b>SES Total</b>		<b>49</b>	<b>2</b>	<b>45</b>	<b>0</b>	<b>45</b>	<b>0</b>	<b>45</b>	<b>0</b>	<b>45</b>	<b>0</b>
------------------	--	-----------	----------	-----------	----------	-----------	----------	-----------	----------	-----------	----------



Organizational Chart (New)



Note: For detailed counts and authorized positions, please see following page entitled "Staffing by Position"



**City of Franklin, Tennessee**  
**FY 2020 Operating Budget**

Res 2020-12  
 Exhibit A

**Staffing by Position (New)**

Position	Pay Grade	FY 2016		FY 2017		FY 2018		FY 2019		FY 2020	
		F-T	P-T	F-T	P-T	F-T	P-T	F-T	P-T	F-T	P-T
<b>Administration</b>											
San. & Env. Services Director	K	1	0	1	0	1	0	1	0	1	0
Assistant SES Director	I	1	0	1	0	1	0	1	0	1	0
Office Manager	F	1	0	1	0	1	0	1	0	1	0
Technical Support Specialist II	F	0	0	0	0	0	0	1	0	1	0
Technical Support Specialist I	E	1	0	1	0	1	0	0	0	1	0
Customer Services Technician	D	1	0	1	0	1	0	1	0	1	0
Administrative Assistant	D	0	0	0	0	0	0	0	0	1	0
HHW Drop Off Site Attendant	C	1	0	1	0	1	0	1	0	1	0
Scale Operator	C	0	0	0	0	0	0	0	0	1	0
Administrative Secretary	B	1	0	1	0	1	0	1	0	0	0
<b>Totals</b>		<b>7</b>	<b>0</b>	<b>7</b>	<b>0</b>	<b>7</b>	<b>0</b>	<b>7</b>	<b>0</b>	<b>9</b>	<b>0</b>

<b>Collection</b>											
Collection Manager	G	1	0	1	0	1	0	1	0	1	0
SES Crew Supervisor	E	4	0	4	0	4	0	4	0	3	0
SES Equipment Operator	D	21	0	21	0	21	0	21	0	21	0
SES Dispatcher	C	1	0	1	0	1	0	1	0	1	0
SES Worker	B	9	2	5	0	5	0	5	0	5	0
<b>Totals</b>		<b>36</b>	<b>2</b>	<b>32</b>	<b>0</b>	<b>32</b>	<b>0</b>	<b>32</b>	<b>0</b>	<b>31</b>	<b>0</b>

<b>Disposal</b>											
Transfer Station Manager	F	1	0	1	0	1	0	1	0	1	0
Equipment Operator	D	4	0	4	0	4	0	4	0	4	0
Scale Operator	C	1	0	1	0	1	0	1	0	0	0
<b>Totals</b>		<b>6</b>	<b>0</b>	<b>6</b>	<b>0</b>	<b>6</b>	<b>0</b>	<b>6</b>	<b>0</b>	<b>5</b>	<b>0</b>

<b>SES Total</b>		<b>49</b>	<b>2</b>	<b>45</b>	<b>0</b>	<b>45</b>	<b>0</b>	<b>45</b>	<b>0</b>	<b>45</b>	<b>0</b>
------------------	--	-----------	----------	-----------	----------	-----------	----------	-----------	----------	-----------	----------