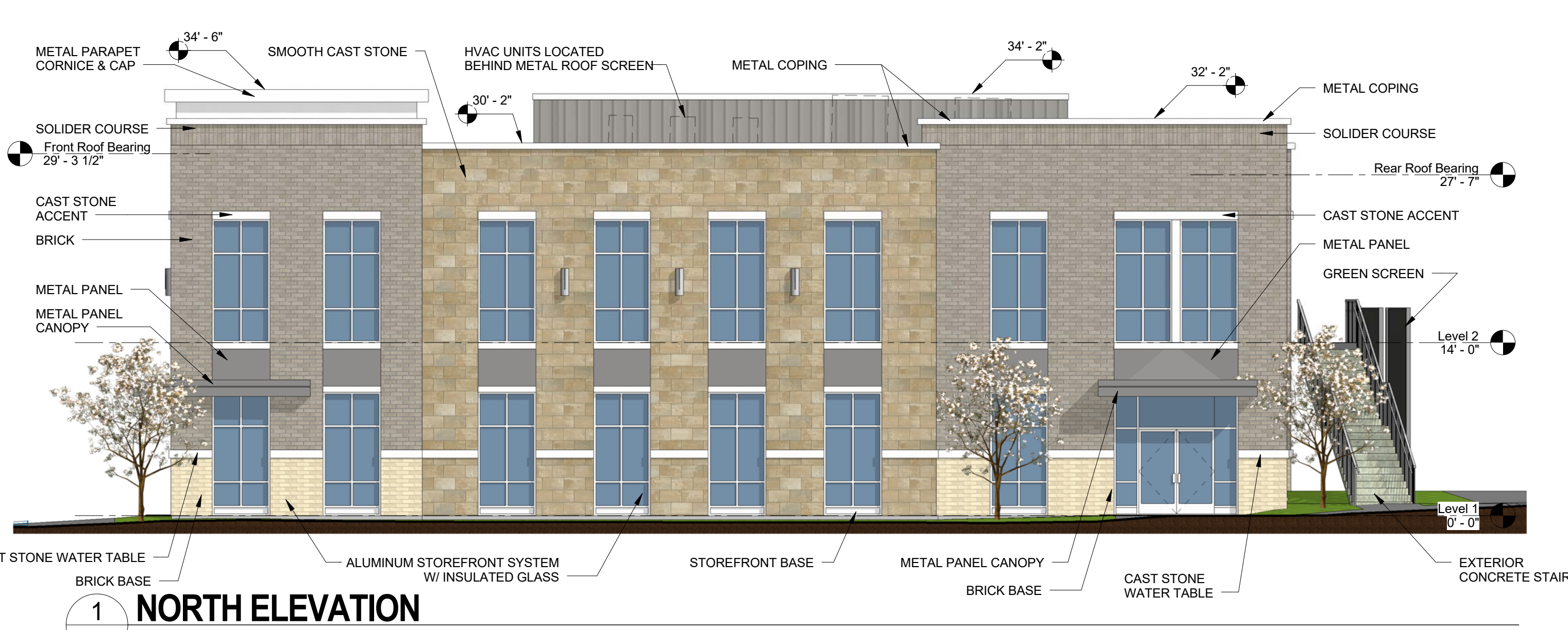


**2 EAST ELEVATION**  
A1 SCALE: 1/8" = 1'-0"



**1 NORTH ELEVATION**  
A1 SCALE: 1/8" = 1'-0"

- NOTES**
1. LOCATION AND NUMBERS OF STOREFRONT DOORS SUBJECT TO CHANGE PER TENANT REQUIREMENTS.
  2. LOCATION AND NUMBERS OF REAR & EGRESS DOORS SUBJECT TO CHANGE PER TENANT REQUIREMENTS.
  3. TENANT SIGNS WILL BE SUBMITTED FOR APPROVAL AS TENANT REQUIREMENTS ARE DETERMINED.
  4. SPECIFIED MATERIALS MAY CHANGE SUBJECT TO AVAILABILITY AT TIME OF CONSTRUCTION AND SUBJECT TO APPROVAL OF BNS DEPARTMENT OR PLANNING COMMISSION.
  5. THESE ELEVATIONS HAVE BEEN DESIGNED TO MEET THE REQUIREMENTS OF THE CITY OF FRANKLIN'S ARCHITECTURAL DESIGN STANDARDS AND THE APPROVAL OF THE PLANNING COMMISSION. CHANGES SHALL NOT BE MADE TO THE APPROVED ELEVATIONS UNLESS APPROVED BY EITHER THE BNS DEPARTMENT OR THE PLANNING COMMISSION.
  6. HVAC UNITS ARE LOCATED ON THE ROOFS OF THE BUILDING AND ARE SCREENED FROM PUBLIC VIEW BY ROOF SCREENING WALLS.
  7. CAVITY WALL CONSTRUCTION SHALL BE USED WHEREVER INTEGRALLY COLORED, UNPAINTED, SPLIT FACE CONCRETE BLOCK IS USED TO PREVENT WATER PENETRATION.

**EXTERIOR FINISH LEGEND**

<b>BRICK</b> STYLE/SIZE: COLOR: MANUFACTURER: MORTAR: MORTAR MANUF.:	UTILITY SLATE GRAY ACME SMITH GRAY HOLCIM	<b>STOREFRONT &amp; CURTAIN WALL</b> STYLE/SIZE: COLOR: MANUFACTURER:	ALUMINUM RECTANGULAR ANODIZED ALUMINUM TUBELITE OR EQUAL
<b>BRICK BASE</b> STYLE/SIZE: COLOR: MANUFACTURER: MORTAR: MORTAR MANUF.:	UTILITY RIDGMAR ACME 200N HOLCIM	<b>GLAZING</b> STYLE/SIZE: COLOR: MANUFACTURER:	1" INSULATED LOW-E SOLAR BLUE + SOLARBAN 70XL (3) PPG OR EQUAL
<b>SMOOTH CAST STONE</b> STYLE/SIZE: COLOR: MANUFACTURER: MORTAR: MORTAR MANUF.:	SMOOTH / 12"x24" SAVANNAH (BLENDED) ROCKCAST WHITE HOLCIM	<b>PREFINISHED METAL PARAPET COPING</b> COLOR: MANUFACTURER:	SHASTA WHITE BERRIDGE OR EQUAL
<b>CAST STONE ACCENT</b> STYLE: SIZE: COLOR: MANUFACTURER: MORTAR: MORTAR MANUF.:	SMOOTH 8" (WATER TABLES & 2ND FLOOR WINDOW CAP) 8" (WINDOW SILLS & 1ST FLOOR WINDOW CAP) CRYSTAL WHITE ROCKCAST WHITE HOLCIM	<b>METAL PANEL CANOPY</b> STYLE/SIZE: COLOR: MANUFACTURER:	SMOOTH METAL PANEL MUSKET GRAY PAC-CLAD OR EQUAL
		<b>METAL PANEL / ROOF SCREEN</b> STYLE/SIZE: COLOR: MANUFACTURER:	SMOOTH METAL PANEL MUSKET GRAY PAC-CLAD OR EQUAL
		<b>PAINT</b> COLOR:	TBD

- MATERIAL AREA NOTES**
1. MINOR MATERIALS INCLUDING COPINGS, FLASHINGS, AND TRIM INSTALLED OVER BRICK ARE NOT INCLUDED IN MATERIAL AREA CALCULATIONS.
  2. NET WALL AREA EXCLUDES STOREFRONT, DOORS, LOUVERS AND MINOR TRIM.

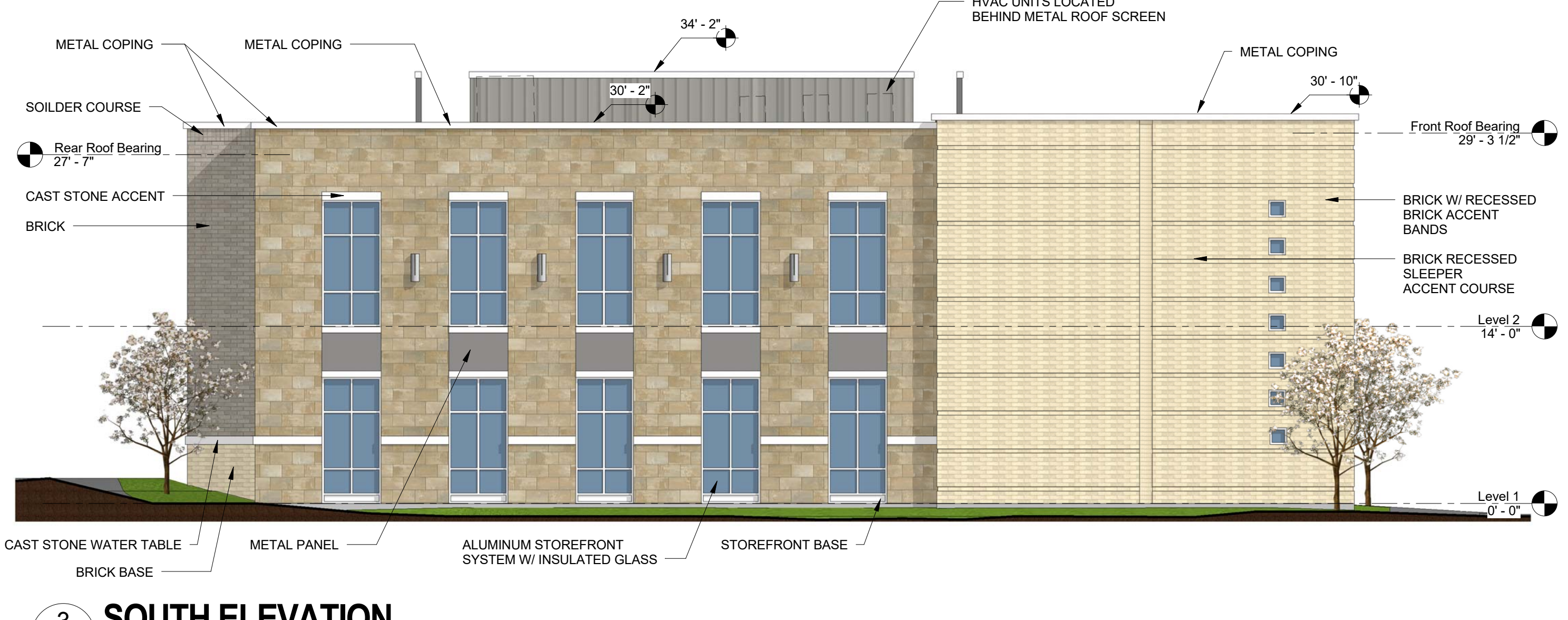
**MATERIAL CALCULATIONS**

ELEVATION	AREA	% OF NET
EAST ELEVATION	GROSS WALL AREA	NA%
	NET WALL AREA	100%
	BRICK AREA	55%
	CAST STONE AREA	36%
	METAL PANEL/CANOPY	9%
NORTH ELEVATION	GROSS WALL AREA	NA%
	NET WALL AREA	100%
	BRICK AREA	48%
	CAST STONE AREA	44%
	METAL PANEL/CANOPY	8%
WEST ELEVATION	GROSS WALL AREA	NA%
	NET WALL AREA	100%
	BRICK AREA	79%
	CAST STONE AREA	17%
	METAL PANEL/CANOPY	4%
SOUTH ELEVATION	GROSS WALL AREA	NA%
	NET WALL AREA	100%
	BRICK AREA	50%
	CAST STONE AREA	47%
	METAL PANEL/CANOPY	3%

**CONCEPT DESIGN**  
FINAL DESIGN TO BE  
SUBMITTED FOR SITE PLAN  
APPROVAL



**4 WEST ELEVATION**  
A1 SCALE: 1/8" = 1'-0"



**3 SOUTH ELEVATION**  
A1 SCALE: 1/8" = 1'-0"

Revisions

HMH Job Number  
16056

City of Franklin Project Number  
6381

Drawn By  
JCS

Date  
04.06.2017

Drawing  
EXTERIOR  
ELEVATIONS

**A1**

Gateway  
Village Office  
Building

3020 Stansberry Lane  
Franklin, TN



2 View from North-East  
A2 SCALE:



1 View from North-West  
A2 SCALE:



3 View from South-West  
A2 SCALE:



4 View from South-East  
A2 SCALE:

Revisions

HMH Job Number  
16056

City of Franklin Project Number  
6381

Drawn By  
JCS

Date  
04.06.2017

Drawing  
PERSPECTIVES

A2