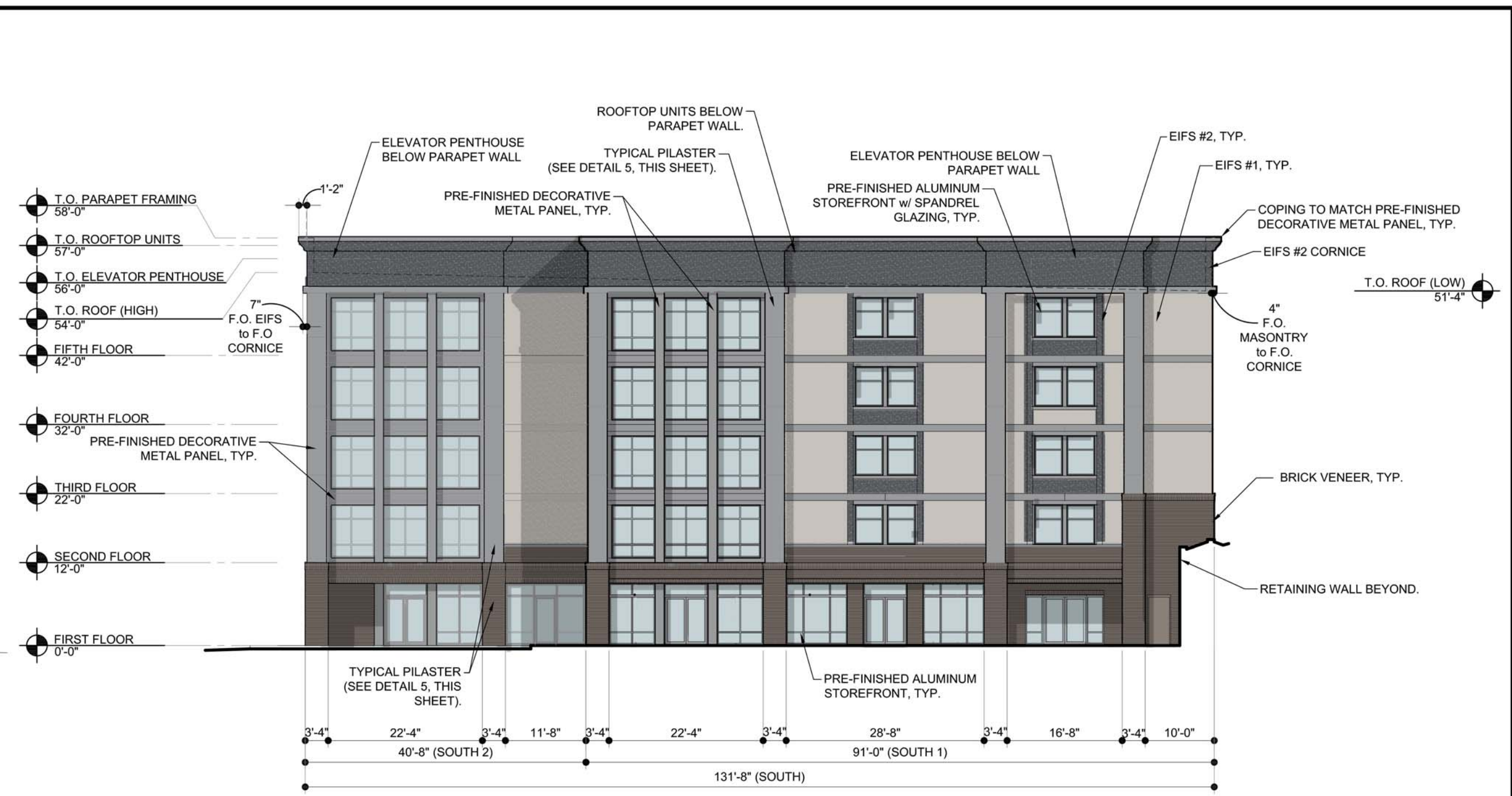
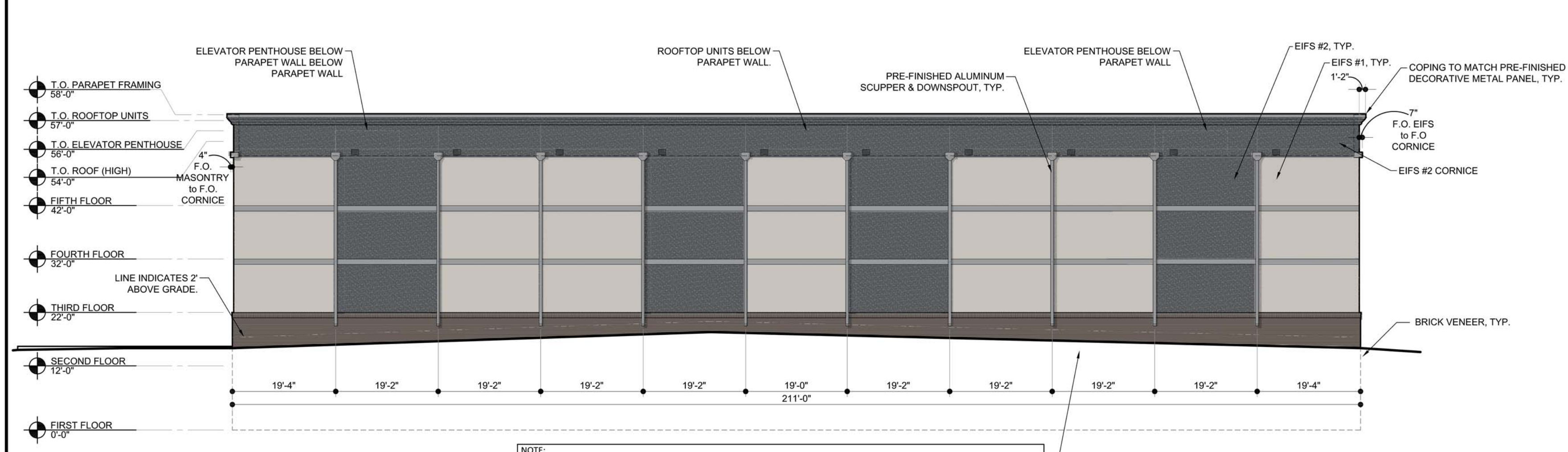


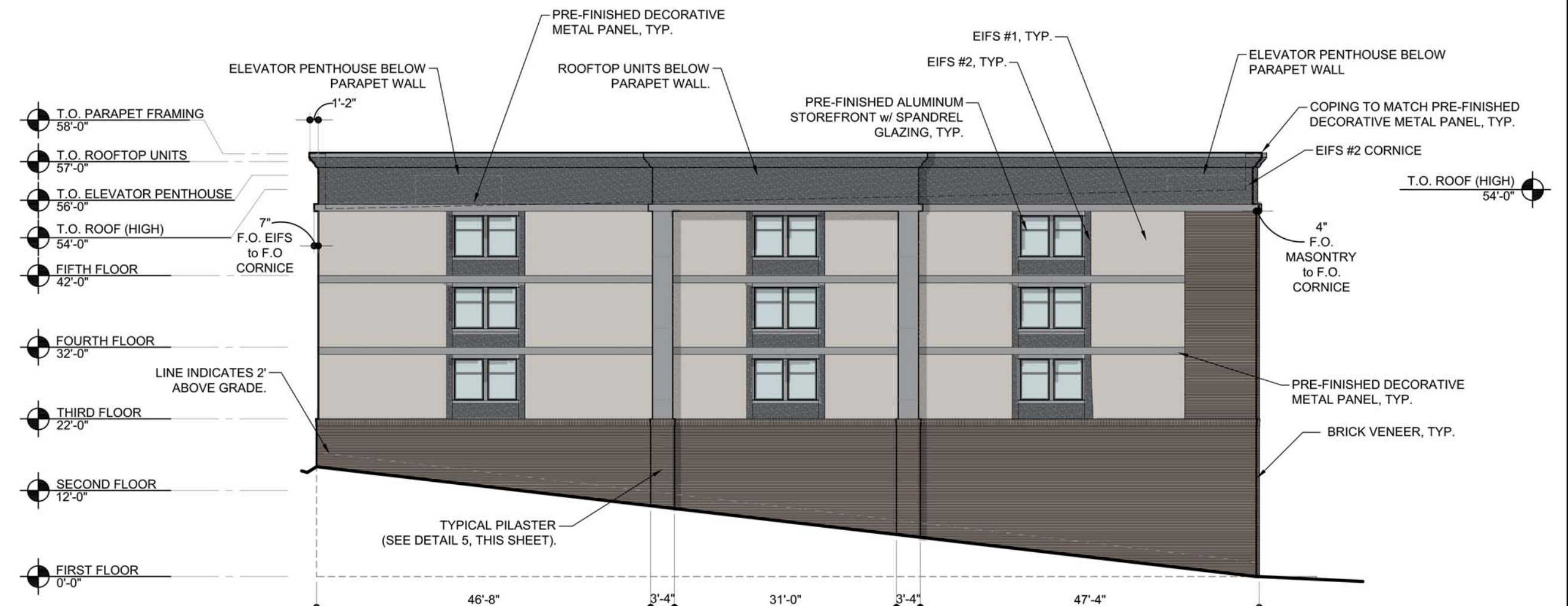
WEST ELEVATION 1



SOUTH ELEVATION 2

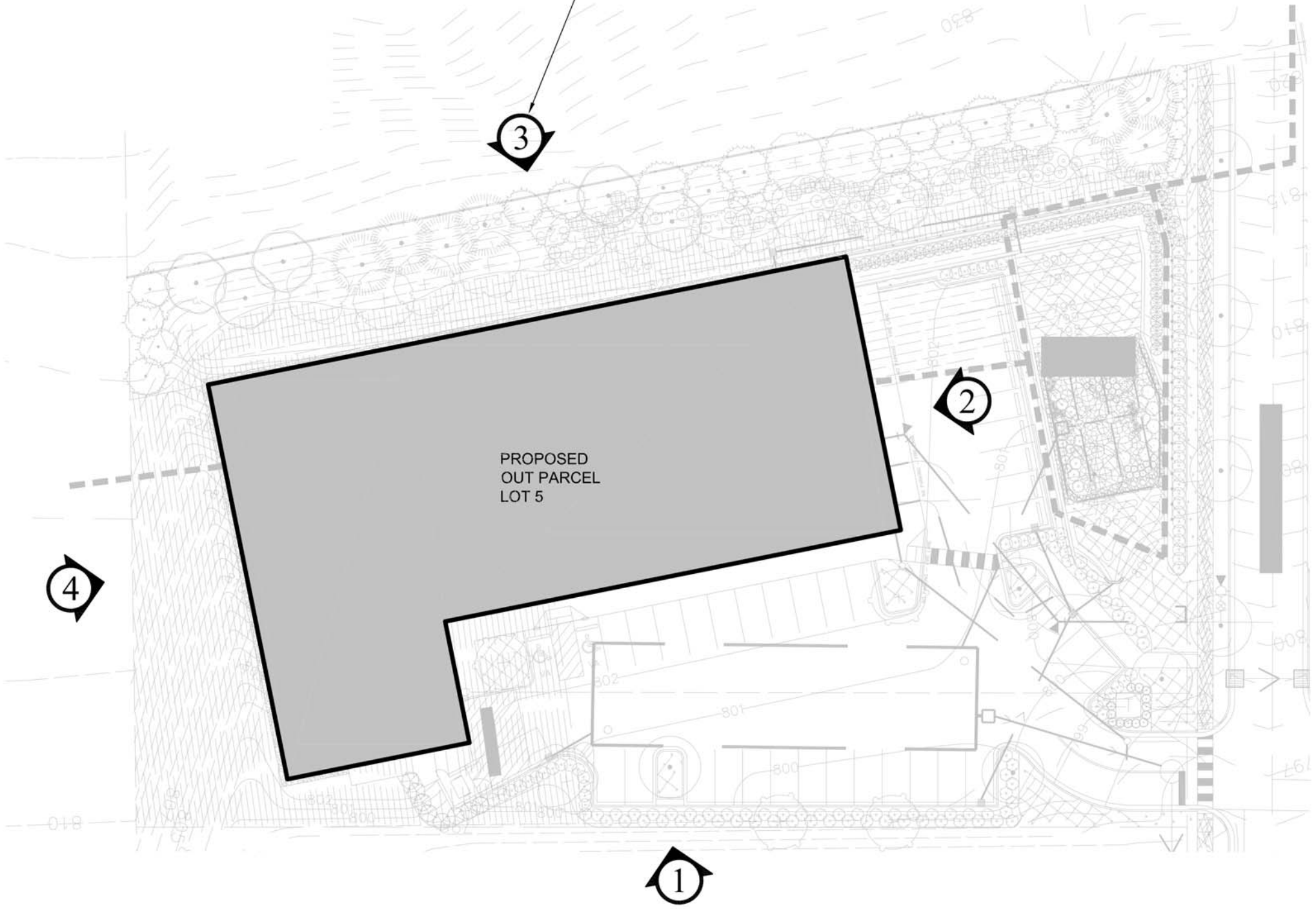


EAST ELEVATION 3



NORTH ELEVATION 4

NOTE: EAST ELEVATION (#3 ON THIS SHEET) ABUTS CITY OF FRANKLIN REQUIRED LANDSCAPE BUFFER. THE PROPOSED FINISH GRADE ELEVATION ALONG THE EASTERN ELEVATION IS APPROXIMATELY 4-10 FEET LOWER THAN EXISTING GRADE ALONG PROPERTY LINE. A CITY OF FRANKLIN REQUIRED 6' HEIGHT WOODEN PRIVACY FENCE IS TO BE INSTALLED ALONG PROPERTY LINE.

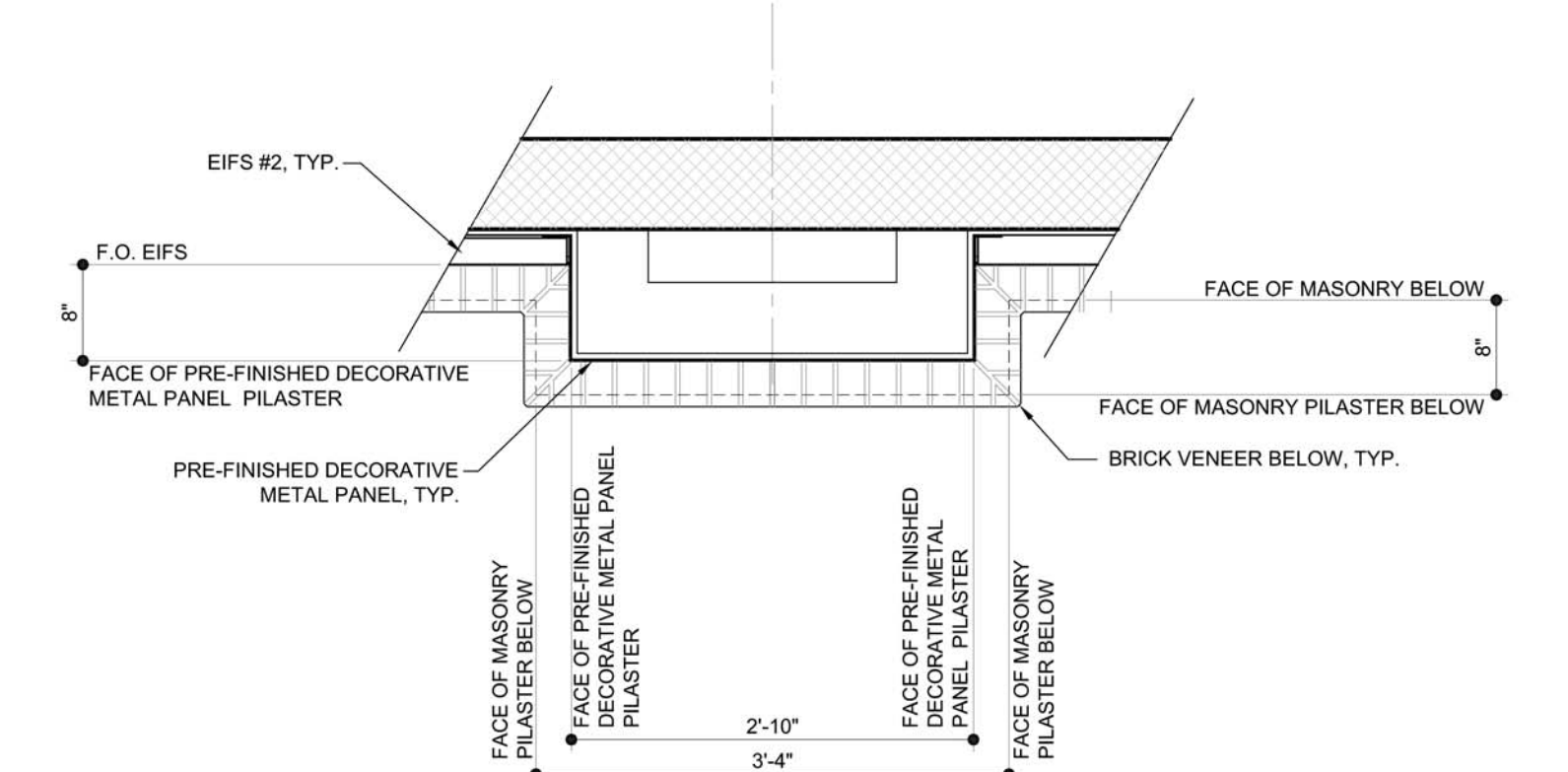


SITE REFERENCE PLAN

MATERIAL CALCULATIONS

ELEVATIONS	MASONRY	EIFS	ACCENT	GLAZING etc	TOTAL WALL	TOTAL OPAQUE	% MASONRY	% EIFS	% ACCENT
	WEST 1	2171	395	841	715	3922	3207	67.7%	12.3%
WEST 2	696	4079	1128	2238	8141	5903	11.8%	69.1%	19.1%
WEST	2867	4474	1769	2953	12063	9110	31.5%	49.1%	19.4%
SOUTH 1	1016	1630	1010	1563	5219	3656	27.8%	44.6%	27.6%
SOUTH 2	284	672	596	855	2407	1552	18.3%	43.3%	38.4%
SOUTH	1300	2302	1606	2418	7626	5208	25.0%	44.2%	30.8%
NORTH	2193	2959	797	414	6363	5949	36.9%	49.7%	13.4%
TOTAL	10527	16511	7547	11156	45741	34585	30.4%	47.7%	21.8%

NOTES:
EAST ELEVATION NOT APPLICABLE



TYPICAL PILASTER DETAIL 5

ESTABLISHED 2001
SMALLWOOD NICKLE ARCHITECTS
— PLLC —