



GreshamSmith.com

222 Second Avenue South
Suite 1400
Nashville, TN 37201

615.770.8100

REVISÉD PUD PLAN

RAMSEY
SOLUTIONS

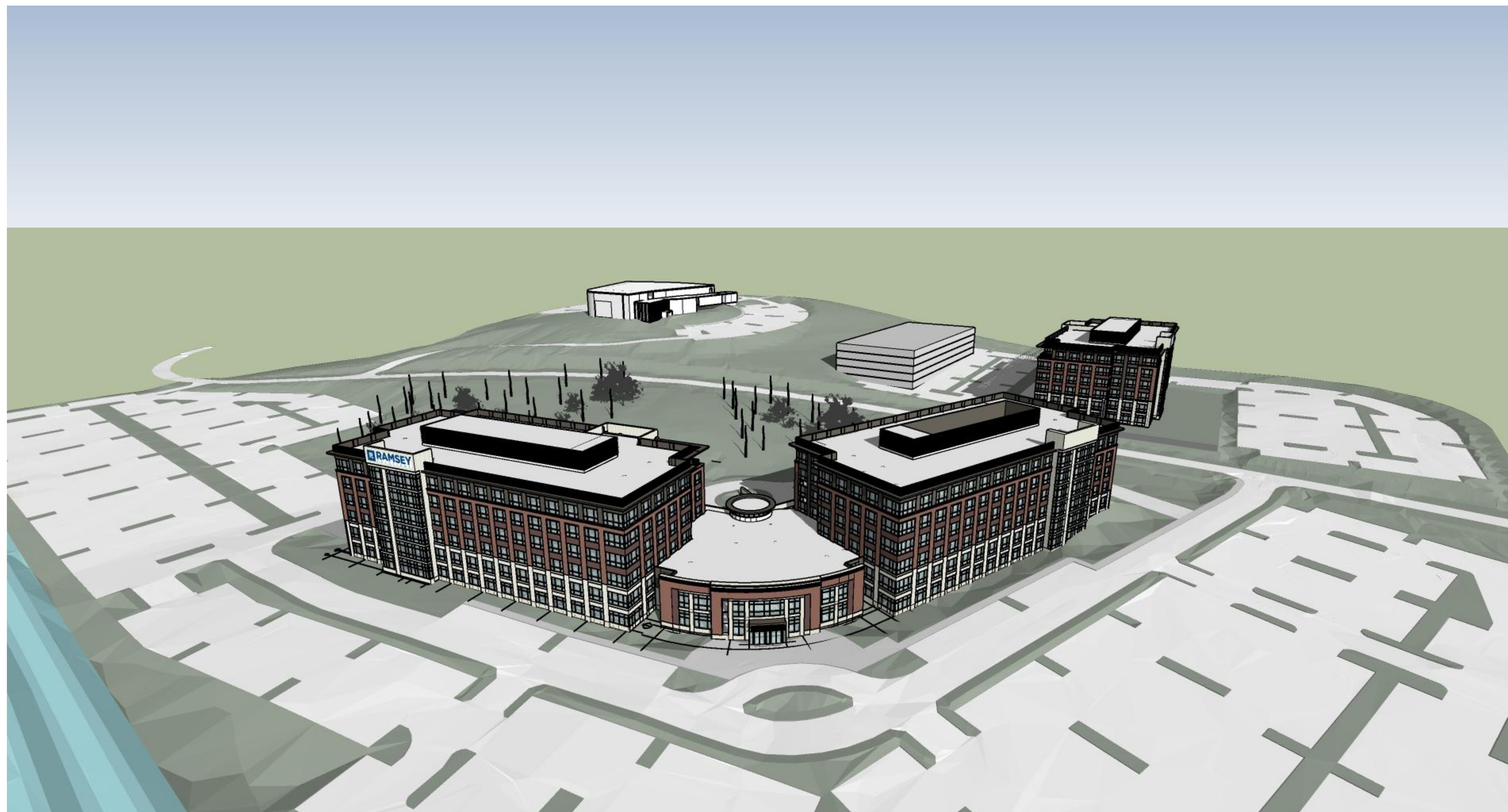
**BERRY FARMS
REAMS-FLEMING
TRACT**

MATT 5:14-16, LLC.

1011 REAMS FLEMING BLVD
FRANKLIN, TN 37064

THIS SITE PLAN HAS BEEN DESIGNED TO MEET THE BERRY FARMS REAMS FLEMING PATTERN BOOK. CHANGES SHALL NOT BE MADE TO THE APPROVED SITE PLAN UNLESS ALSO APPROVED BY THE BERRY FARMS REAMS FLEMING ARCHITECTURAL REVIEW COMMITTEE

COF #TBD



BUILDINGS 1, 2, 3 & 4
MASSING EXHIBIT
 SOUTH WEST FACE OF BUILDING

Revision

[illegible]

BUILDING MASSING & ELEVATIONS

A1.1

41138.02
01/14/2019