

Owner/Subdivider: Westhaven Partners, LLC

Owners/Partners with 5% interest or more:

Westhaven Partners, LLC
c/o Tim Downey - tim.downey@southernland.com
1550 W. McEwen Drive, Suite 200
Franklin, TN 37067
(615) 778-3150
H. Rhodes Hart
612 10th Ave. North
Nashville, TN 37203
(615) 259-4222
PPMC Limited Partnership
c/o Pete Serodino
P.O. Box 4539
Chattanooga, TN 37405
(423) 266-1855
Monica Smiley
1417 Heritage Landing Drive
Chattanooga, TN 37405
(423) 266-1070
Frank Mastropasqua
614 Church Street, #300
Nashville, TN 37203
(615) 244-8400
Springlake, G.P.
c/o Ron Pace
95 White Bridge Road, #504
Nashville, TN 37205
(615) 352-9600
Frank J.B. Varallo
Rone-Regency Jewelers
Brainerd Village
Chattanooga, TN 37411
(423) 894-1168

Plat Notes:

- 1. The purpose of this plat is to create 46 lots (Lots 1790-1835).
2. Subject property is shown as Section 45 located in Westhaven P.U.D. Subdivision, Fifth Civil District, City of Franklin, Williamson County, Tennessee.
3. Subject property is identified as a portion of Parcel 23 on Property Map 64.
4. Zoning: Mixed-Use Local District (ML 1.8/Traditional/WHCO-1)
5. All lots in Section 45 fall in the T4 and T5 Transect Zone as defined in the Westhaven Concept Plan (Revision 2) and Pattern Book, revised 05/08/07.
6. According to the Westhaven Pattern Book, the following building types would be permitted in the T4 and T5 transect zones - side yard house, cottage, courtyard house, townhouse, flex house, or house.

Section 45 includes the following building types and sizes: side yard houses, cottages, courtyard houses, townhomes, courtyard apartments, and flex houses.

Dwelling unit living areas: Exclusive of open porches, garages, and ancillary apartments:
Minimum.....1,000 S.F.
Maximum.....10,000 S.F.
Maximum building heights.....2 stories

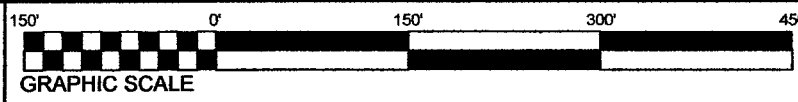
7. Minimum setback requirements (Section 45 lots):

Front yard - 10'
Side yard - 5' (min. 10' between buildings)
(minimum 0' between townhome units)
Note: Projections shall not extend to a point closer than 4 feet from the property line. Any projections (including soffits) into the 5' side yard setback shall have a one-hour fire-resistive construction on the underside. Refer to the 2004 IRC Supplement R302.1 Exterior Walls for further explanation.

Rear yard/Alley setback - 7' (minimum 18' wide x 22' deep parking apron is required from the front of the apron to the face of alley curb) except on street corner lots and lots that provide garages with a storage area of 50 square feet or greater.

Rear yard/Non-Alley setback - 5' minimum to the property line; 10' minimum between buildings (for the main, back and ancillary buildings).

- 8. Bearings are based on TN Grid System (NAD 83)
9. Subject property is not within a Flood Hazard Area as per F.E.M.A. Flood Insurance Rate Map No. 47187C0190F, Revision Date September 29, 2006, Community No. 470206, Panel No. 195.
10. The developer acknowledges that all lots have adequate building envelopes and no variances will be required.
11. All streets and alleys are designated as Public Right-of-Way. The City of Franklin is not responsible for the replacement or repair of any private structures within public easements should the structures be disturbed in the process of the City exercising its easement rights.
12. Streets, drainage easements, structures and culverts shall be maintained by the City of Franklin. Detention ponds and outlet structures within public drainage easements are to be maintained by the owner.
13. Stormwater quality shall be addressed with each site plan.
14. Open space areas, roadway medians, brick pedestrian crosswalks, bike paths, sidewalks outside of right-of-ways, trails and detention facilities shall be maintained by the Westhaven Home Owners Association and shall be Public Utility, Drainage and Access Easements.
15. Building Elements: Porches, stoops, chimneys, bay windows, and balconies may encroach into the front yard setbacks. Chimneys may encroach up to 1' from the property line within the side yard setbacks. Where chimneys encroach into the side yard setback, the minimum separation between dwellings shall be reduced by the distance of the encroachment only at the width of the fireplace. The remainder of the side yard setback shall be the stated minimum. Chimneys that encroach closer than 5'-0" to a property line must meet the fire rating requirements of the City of Franklin Building Codes.
16. Within new developments and for off-site lines constructed as a result of, or to provide service to, the new development, all utilities, (including cable television, electrical, natural gas, sewer, telephone and water lines) shall be placed underground.
17. All street light locations and quantities are approximate. Final positioning and quantity shall be at the direction of MTEM. 17. Mineral rights are to be held by Westhaven Partners, LLC.
18. Property numbers are indicated as such: Lot numbers are encircled and address numbers are enclosed by rectangular shape.
19. At all temporary turnarounds, a sign shall be placed stating, "Street to be extended by authority of the City of Franklin."
20. Street address numbers are assigned to the following street names: Lots 1790-1807 Championship Blvd., Lots 604-622 Jasper Ave., Lots 1000-1005 Clifton Street, Lots 1702-1720 Grassmere Road.
21. Maintenance of all stormwater management features shall be the responsibility of the property owner(s) or HOA.
22. No obstructions or encroachments which impede the flow of stormwater shall be permitted within Public Drainage Easements between lots. The City of Franklin is not responsible for repair or replacement of any encroachments that are damaged or removed in the course of maintenance activity within easements.



Legend table with symbols for Existing Iron Rod, Fire Hydrant, Street Light, etc.

Certificate of Survey

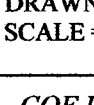
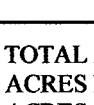
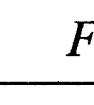
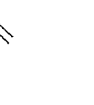
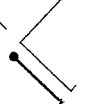
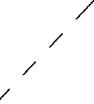
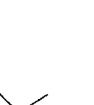
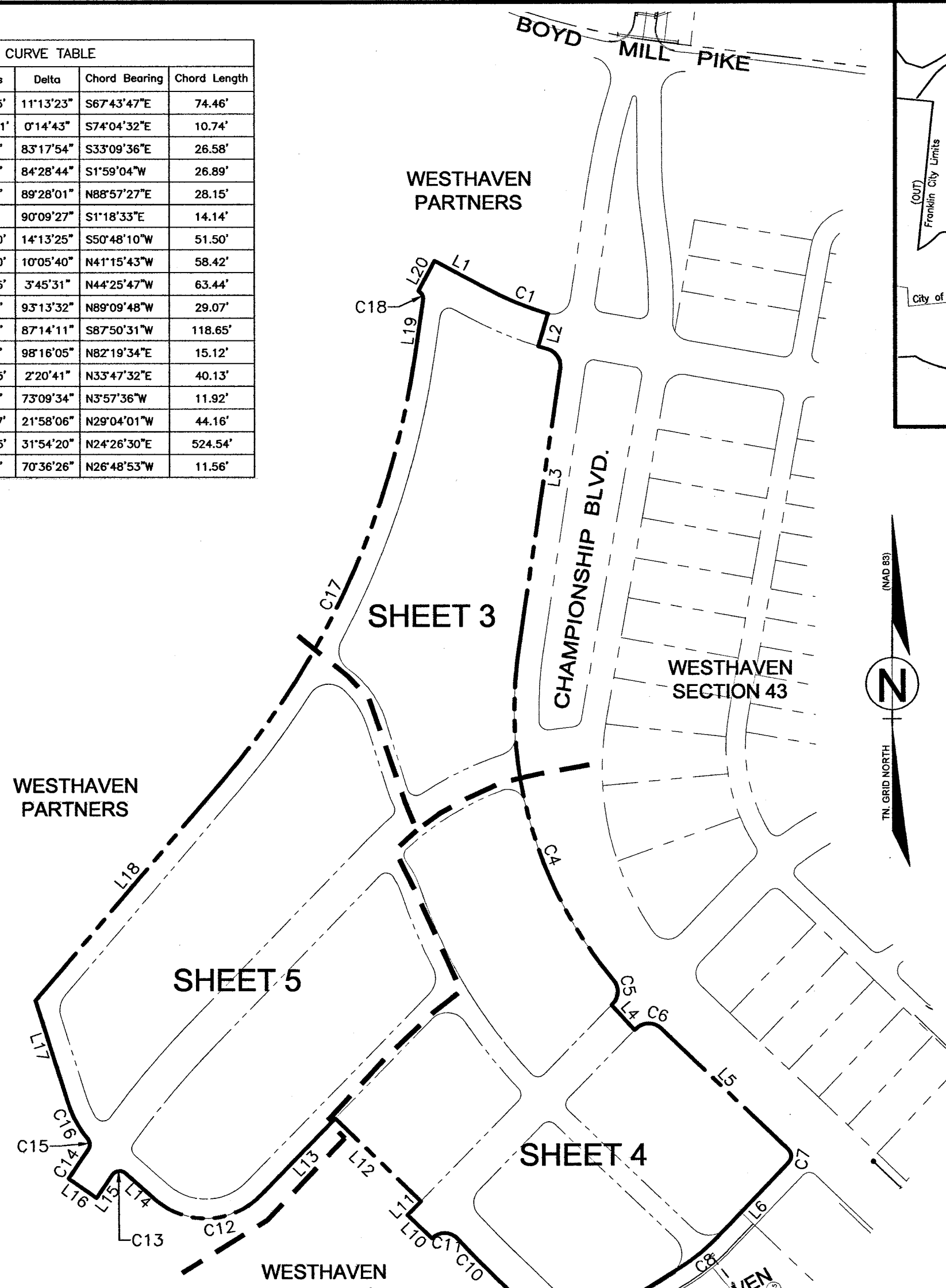
I (we) hereby certify that the subdivision plat as shown herein is correct and that all of the monuments shown hereon have been placed as indicated. This subdivision plat correctly represents a survey made under my supervision on the 27th day of February, 2016.

JOEY C. WILSON II, PE, RLS Tennessee RLS No. 2099



DETACHED RESIDENTIAL LOT TREE CHART table with columns for Lot #, Lot Size, ACI, # Trees, etc.

CURVE TABLE with columns for Curve #, Length, Radius, Delta, Chord Bearing, Chord Length.



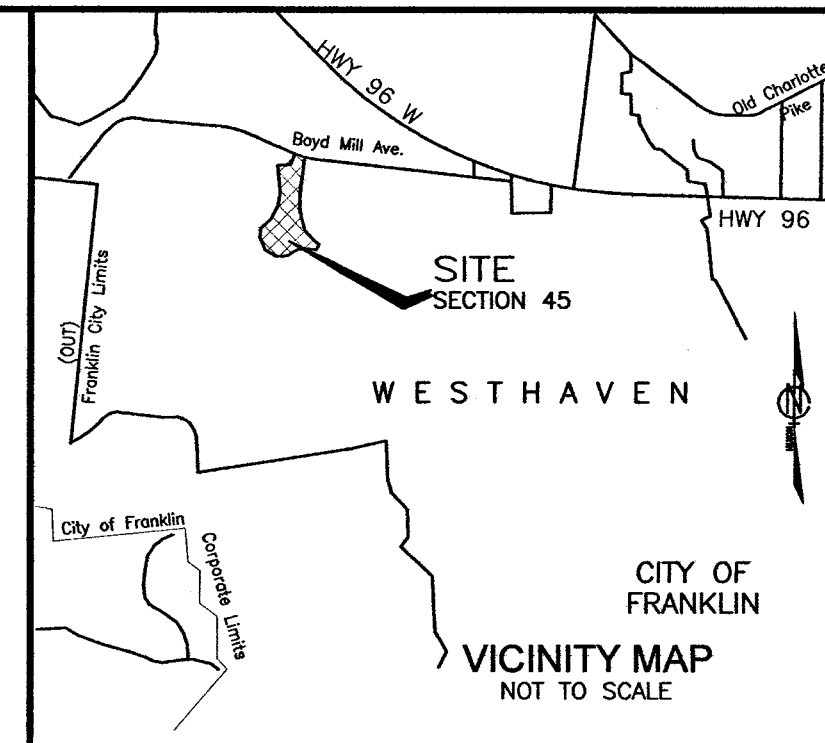
Line #	Length	Direction
L1	67.57'	S62°07'06"E
L2	38.50'	S16°39'12"W
L3	319.75'	S8°29'20"W
L4	38.56'	S42°30'23"E
L5	199.98'	S46°18'33"E
L6	120.43'	S43°41'27"W
L7	163.67'	S57°54'52"W
L8	5.48'	N36°12'52"W
L9	38.17'	N46°18'33"W
L10	38.50'	N45°46'34"W
L11	21.70'	N44°13'26"E
L12	135.00'	N45°46'34"W
L13	122.06'	S44°13'26"W
L14	45.56'	N48°32'23"W
L15	31.53'	S34°04'42"W
L16	38.50'	N55°02'08"W
L17	123.55'	N17°35'40"W
L18	328.03'	N40°23'40"E
L19	67.02'	N8°29'20"E
L20	38.50'	N27°52'54"E
L21	1.98'	N44°13'26"E
L22	23.04'	S62°07'06"E
L23	46.36'	S8°29'20"W
L24	56.00'	S8°29'20"W

Line #	Length	Direction
L25	46.00'	S8°29'20"W
L26	46.00'	S8°29'20"W
L27	46.00'	S8°29'20"W
L28	46.00'	S8°29'20"W
L29	33.42'	S8°29'20"W
L30	78.98'	N17°35'40"W
L31	52.24'	N8°29'20"E
L32	143.56'	N81°30'40"W
L33	147.08'	N81°30'40"W
L34	159.95'	N81°30'40"W
L35	169.79'	N81°30'40"W
L36	181.98'	N81°30'40"W
L37	196.80'	S81°30'40"E
L38	164.87'	S86°24'19"E
L39	152.40'	N81°30'40"W
L40	78.98'	S17°35'40"E
L41	14.45'	S44°13'26"W
L42	46.51'	S44°13'26"W
L43	37.44'	S44°13'26"W
L44	37.44'	S44°13'26"W
L45	37.44'	S44°13'26"W
L46	37.44'	S44°13'26"W
L47	46.51'	S44°13'26"W
L48	32.69'	S44°13'26"W

Line #	Length	Direction
L49	97.50'	N17°35'40"W
L50	40.39'	N40°23'40"E
L51	48.35'	N40°23'40"E
L52	48.35'	N40°23'40"E
L53	48.35'	N40°23'40"E
L54	48.35'	N40°23'40"E
L55	38.92'	N40°23'40"E
L56	29.27'	N40°23'40"E
L57	184.23'	N17°35'40"W
L58	173.70'	N17°35'40"W
L59	167.31'	N17°35'40"W
L60	162.95'	N17°35'40"W
L61	159.94'	N17°35'40"W
L62	156.99'	N17°35'40"W
L63	153.33'	N17°35'40"W
L64	149.77'	N17°35'40"W
L65	148.10'	S17°35'40"E
L66	149.10'	S17°35'40"E
L67	47.28'	S44°13'26"W
L68	37.43'	S44°13'26"W
L69	37.43'	S44°13'26"W
L70	37.43'	S44°13'26"W
L71	37.43'	S44°13'26"W
L72	37.43'	S44°13'26"W

Curve #	Length	Radius	Delta	Chord Bearing	Chord Length
C1	74.58'	380.75'	11°13'23"	S67°43'47"E	74.46'
C2	10.74'	2509.21'	0°14'43"	S74°04'32"E	10.74'
C3	29.08'	20.00'	83°17'54"	S33°09'36"E	26.58'
C4	404.10'	475.13'	48°43'48"	S15°52'59"E	392.03'
C5	29.49'	20.00'	84°28'44"	S1°59'04"W	26.89'
C6	31.23'	20.00'	89°28'01"	N88°57'27"E	28.15'
C7	15.71'	9.99'	90°09'27"	S1°18'33"E	14.14'
C8	51.64'	208.00'	14°13'25"	S50°48'10"W	51.50'
C9	58.49'	332.00'	10°05'40"	N41°15'43"W	58.42'
C10	63.45'	967.25'	3°45'31"	N44°25'47"W	63.44'
C11	32.54'	20.00'	93°13'32"	N89°09'48"W	29.07'
C12	130.94'	86.00'	87°14'11"	S87°50'31"W	118.65'
C13	17.15'	10.00'	98°16'05"	N82°19'34"E	15.12'
C14	40.13'	980.75'	2°20'41"	N33°47'32"E	40.13'
C15	12.77'	10.00'	73°09'34"	N37°53'36"W	11.92'
C16	44.43'	115.87'	21°58'06"	N29°04'01"W	44.16'
C17	531.38'	954.25'	31°54'20"	N24°26'30"E	524.54'
C18	12.32'	10.00'	70°36'26"	N26°48'53"W	11.56'
C19	82.13'	419.25'	11°13'25"	S67°43'48"E	81.99'
C20	12.61'	479.62'	1°30'24"	S74°32'20"W	12.61'
C21	44.67'	475.12'	5°23'13"	S4°16'18"W	44.66'
C22	44.05'	475.12'	5°18'41"	S1°04'39"E	44.03'
C23	26.41'	20.00'	75°39'12"	N34°05'48"E	24.53'
C24	103.48'	369.25'	16°03'23"	S63°53'43"W	103.14'
C25	17.95'	10.00'	102°51'20"	S72°42'19"E	15.64'

Curve #	Length	Radius	Delta	Chord Bearing	Chord Length
C26	5.72'	89.00'	3°40'59"	N19°26'09"W	5.72'
C27	39.46'	111.00'	20°22'00"	N27°46'40"W	39.25'
C28	32.73'	111.00'	16°53'40"	N46°24'30"W	32.61'
C29	36.21'	25.00'	82°59'26"	S13°21'37"E	33.13'
C30	9.65'	976.25'	0°33'58"	N27°51'08"E	9.65'
C31	48.28'	976.25'	2°50'01"	N26°09'08"E	48.28'
C32	47.60'	976.25'	2°47'36"	N23°20'19"E	47.59'
C33	47.05'	976.25'	2°45'40"	N20°33'41"E	47.04'
C34	46.62'	976.25'	2°44'10"	N17°48'46"E	46.62'
C35	46.31'	976.25'	2°43'05"	N15°05'09"E	46.31'
C36	56.12'	976.25'	3°17'37"	N12°04'48"E	56.11'
C37	33.13'	976.25'	1°56'39"	N9°27'40"E	33.12'
C38	19.09'	10.00'	109°23'34"	N63°11'07"E	16.32'
C39	38.51'	25.00'	88°15'35"	S86°36'36"W	34.81'
C40	49.19'	89.00'	31°39'57"	S13°39'57"W	48.56'
C41	18.13'	111.00'	9°21'24"	S22°16'21"E	18.11'
C42	13.32'	10.00'	76°18'10"	S11°12'02"W	12.35'
C43	33.05'	369.25'	5°07'41"	S46°47'17"W	33.04'
C44	13.87'	1019.25'	0°46'48"	S43°50'02"W	13.87'
C45	47.49'	1019.25'	2°40'10"	S42°06'33"W	47.49'
C46	48.89'	1019.25'	2°44'55"	S39°24'00"W	48.89'
C47	33.61'	1019.25'	1°53'21"	S37°04'53"W	33.60'
C48	19.43'	10.00'	111°20'20"	S85°11'38"E	16.52'
C49	23.19'	89.00'	14°55'48"	S25°03'34"E	23.13'
C50	25.30'	25.00'	57°59'20"	S11°24'00"W	24.24'



Line #	Length	Direction
L73	37.44'	S44°13'26"W
L74	25.86'	S44°13'26"W
L75	50.77'	N48°32'23"W
L76	8.49'	N44°13'26"E
L77	37.44'	N44°13'26"E
L78	37.43'	N44°13'26"E
L79	37.43'	N44°13'26"E
L80	37.43'	N44°13'26"E
L81	37.43'	N44°13'26"E
L82	37.44'	N44°13'26"E
L83	32.43'	N44°13'26"E
L84	150.89'	N17°35'40"W
L85	150.89'	S17°35'45"E
L86	150.89'	S17°35'45"E
L87	150.89'	S17°35'45"E
L88	150.89'	S17°35'45"E
L89	150.89'	S17°35'45"E
L90	150.89'	S17°35'45"E
L91	146.72'	S17°35'45"E
L92	1.81'	S44°13'26"W
L93	109.71'	N44°13'26"E
L94	140.99'	S68°53'51"W
L95	141.23'	S65°57'59"W
L96	141.32'	S60°17'44"W

Line #	Length	Direction
L97	141.12'	S54°37'30"W
L98	51.97'	S46°18'33"E
L99	46.00'	S46°18'33"E
L100	46.00'	S46°18'33"E
L101	56.00'	S46°18'33"E
L102	104.82'	S43°41'27"W
L103	41.00'	N46°18'33"W
L104	46.00'	N46°18'33"W
L105	46.00'	N46°18'33"W
L106	63.00'	N46°18'33"W
L107	107.93'	N44°13'26"E
L108	46.10'	S46°18'33"E
L109	46.00'	S46°18'33"E
L110	46.00'	S46°18'33"E
L111	49.78'	S46°18'33"E
L112	106.49'	S57°54'52"W
L113	139.82'	S43°41'27"W
L114	139.82'	S43°41'27"W
L115	139.82'	S43°41'27"W
L116	137.17'	N44°13'26"E
L117	136.27'	N44°13'26"E
L118	135.85'	S44°13'26"W
L119	20.38'	N46°18'33"W
L120	17.79'	N46°18'33"W

Line #	Length	Direction
L121	103.93'	N44°13'26"E
L122	30.74'	S44°13'26"W
L123	46.00'	S44°13'26"W
L124	41.00'	S44°13'26"W
L125	41.00'	S44°13'26"W
L126	135.00'	S45°46'34"E
L127	135.00'	S45°46'34"E
L128	135.00'	S45°46'34"E
L129	41.00'	N44°13'26"E
L130	41.00'	N44°13'26"E
L131	46.00'	N44°13'26"E
L132	28.26'	N44°13'26"E

Curve #	Length	Radius	Delta	Chord Bearing	Chord Length
C51	9.68'	976.25'	0°34'06"	N40°06'37"E	9.68'
C52	39.69'	976.25'	2°19'46"	N38°39'42"E	39.69'
C53	40.85'	976.25'	2°23'51"	N36°17'54"E	40.85'
C54	47.89'	976.25'	2°48'38"	N33°41'39"E	47.88'
C55	4.45'	25.00'	10°11'27"	N37°23'04"E	4.44'
C56	18.02'	10.00'	103°15'48"	S84°08'40"E	15.68'
C57	21.41'	89.00'	13°46'59"	S25°37'16"E	21.36'
C58	90.73'	607.00'	8°33'50"	S23°00'41"E	90.64'
C59	31.21'	25.00'	71°31'02"	S8°27'55"W	29.22'
C60	19.39'	64.00'	17°21'36"	S52°54'14"W	19.32'
C61	78.05'	64.00'	69°52'35"	N83°28'41"W	73.30'
C62	14.69'	10.00'	84°10'22"	N6°27'12"W	13.41'
C63	108.61'	980.75'	6°20'43"	N38°48'20"E	108.56'
C64	38.44'	980.75'	2°14'44"	N43°06'04"E	38.44'
C65	34.06'	20.00'	97°34'18"	S61°46'44"E	30.09'
C66	49.07'	475.12'	5°55'02"	S15°57'08"E	49.05'
C67	44.93'	475.12'	5°25'07"	S21°37'13"E	44.92'
C68	43.91'	475.12'	5°17'44"	S26°58'39"E	43.90'
C69	43.92'	475.12'	5°17'46"	S32°16'24"E	43.90'
C70	44.17'	475.12'	5°19'36"	S37°35'05"E	44.16'
C71	16.20'	10.00'	92°49'36"	S89°21'46"E	14.49'
C72	77.34'	585.00'	7°34'28"	N39°09'44"W	77.28'
C73	57.90'	585.00'	5°40'14"	N32°32'23"W	57.87'
C74	57.90'	585.00'	5°40'15"	N26°52'08"W	57.88'
C75	52.16'	585.00'	5°06'30"	S21°28'46"E	52.14'

Curve #	Length	Radius	Delta	Chord Bearing	Chord Length
C76	2.00'	585.00'	0°11'44"	S18°49'39"E	2.00'
C77	35.22'	111.00'	18°10'55"	N27°49'14"W	35.08'
C78	14.73'	10.00'	84°24'06"	S5°17'21"W	13.43'
C79	126.68'	330.75'	21°56'43"	N58°27'46"E	125.91'
C80	39.27'	25.00'	90°00'00"	N88°41'27"E	35.36'
C81	15.80'	10.00'	90°31'59"	N1°02'33"W	14.21'
C82	15.61'	10.00'	89°28'01"	N88°57'27"E	14.08'
C83	45.48'	25.00'	104°13'25"	S5°48'10"W	39.46'
C84	14.96'	10.00'	85°41'09"	N79°14'33"W	13.60'
C85	38.01'	368.00'	5°55'04"	N39°21'31"W	37.99'
C86	25.64'	368.00'	3°59'30"	N44°18'48"W	25.63'
C87	28.21'	931.25'	1°44'09"	N45°26'28"W	28.21'
C88	37.25'	931.25'	2°17'31"	N43°25'38"W	37.25'
C89	30.20'	20.00'	86°30'18"	N0°58'17"E	27.41'
C90	44.38'	25.00'	101°43'05"	S84°55'02"E	38.78'
C91	96.24'	607.00'	9°05'02"	S38°36'00"E	96.14'
C92	15.25'	10.00'	87°21'57"	S0°32'27"W	13.81'

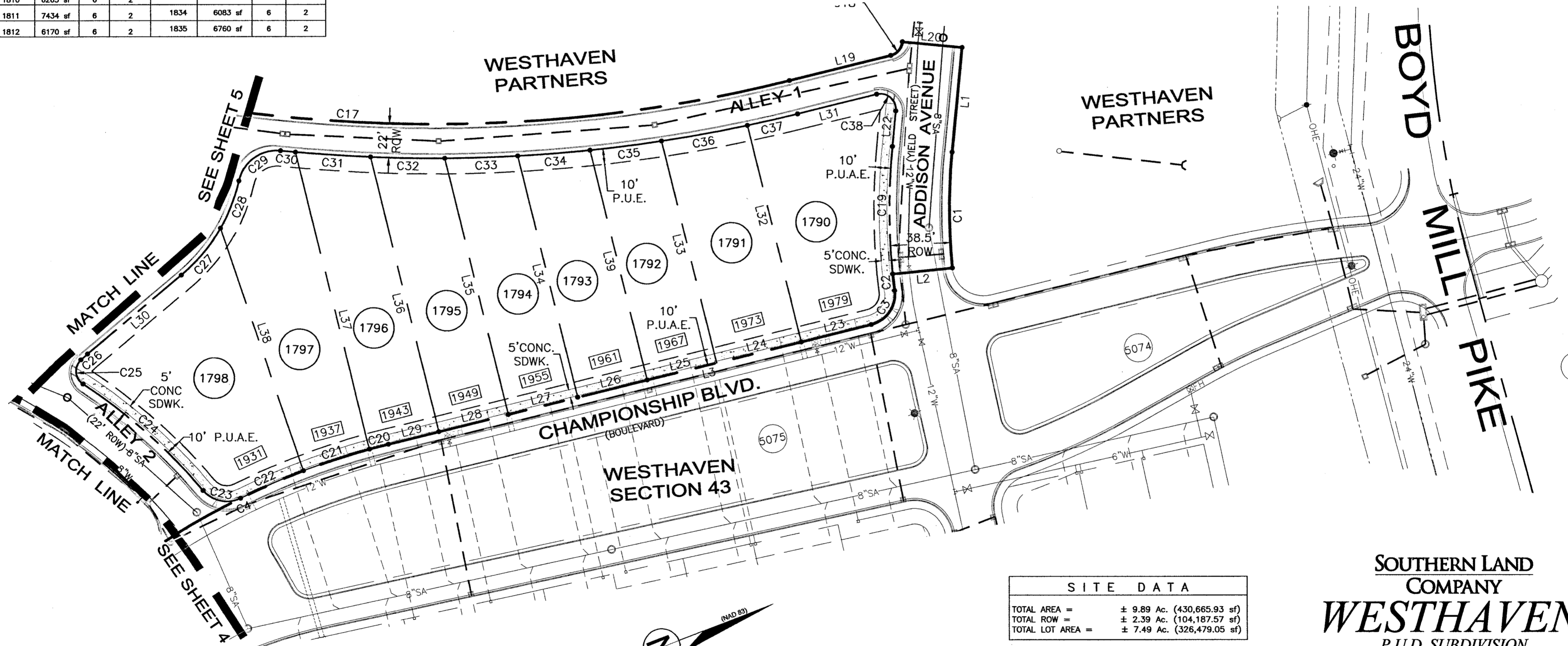
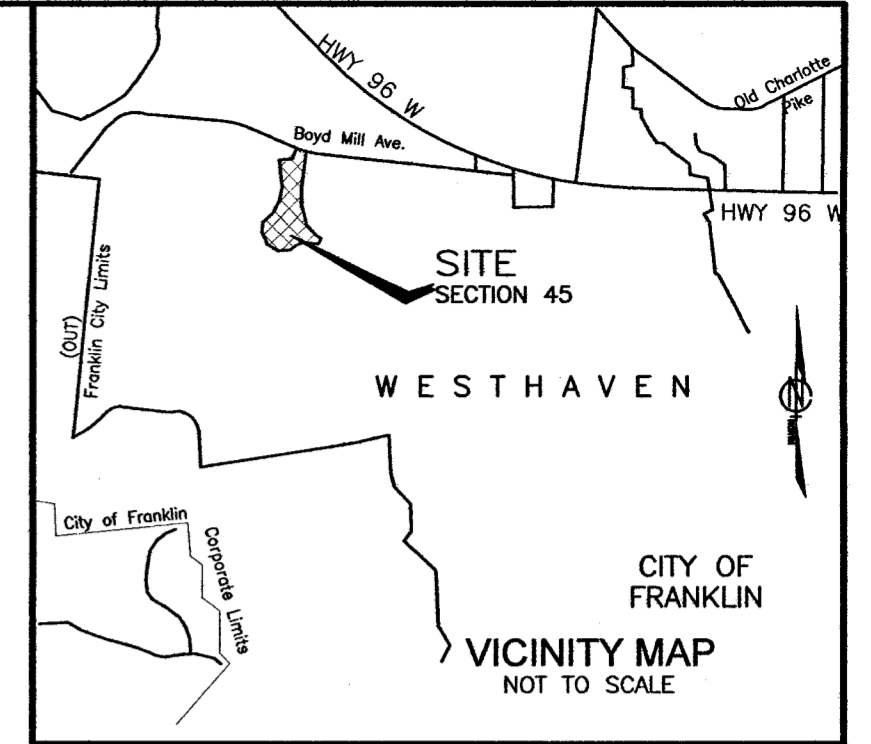
Parcel #	Area (SF)	Area (Ac.)
1790	11081.90	0.25
1791	8122.94	0.19
1792	6879.55	0.16
1793		

DETACHED RESIDENTIAL LOT TREE CHART							
Lot #	Lot Size	ACI	# Trees	Lot #	Lot Size	ACI	# Trees
1790	11,082 sf	12	4	1813	6210 sf	6	2
1791	8123 sf	6	2	1814	5535 sf	6	2
1792	6880 sf	6	2	1815	5535 sf	6	2
1793	7176 sf	6	2	1816	9113 sf	6	2
1794	7575 sf	6	2	1817	6156 sf	6	2
1795	8082 sf	6	2	1818	4979 sf	6	2
1796	8700 sf	6	2	1819	4979 sf	6	2
1797	10,099 sf	12	4	1820	4979 sf	6	2
1798	12,848 sf	12	4	1821	4979 sf	6	2
1799	9335 sf	6	2	1822	4979 sf	6	2
1800	6850 sf	6	2	1823	4979 sf	6	2
1801	7194 sf	6	2	1824	7247 sf	6	2
1802	7191 sf	6	2	1825	7819 sf	6	2
1803	10,473 sf	12	4	1826	7335 sf	6	2
1804	10,022 sf	12	4	1827	5621 sf	6	2
1805	6432 sf	6	2	1828	5444 sf	6	2
1806	6432 sf	6	2	1829	5327 sf	6	2
1807	9073 sf	6	2	1830	5229 sf	6	2
1808	8814 sf	6	2	1831	6362 sf	6	2
1809	6276 sf	6	2	1832	6212 sf	6	2
1810	6265 sf	6	2	1833	6098 sf	6	2
1811	7434 sf	6	2	1834	6083 sf	6	2
1812	6170 sf	6	2	1835	6760 sf	6	2

PARCEL AREA TABLE		
Parcel #	Area (SF)	Area (Ac.)
1790	11081.90	0.25
1791	8122.94	0.19
1792	6879.55	0.16
1793	7175.46	0.16
1794	7575.23	0.17
1795	8081.75	0.19
1796	8699.50	0.20
1797	10099.30	0.23
1798	12847.60	0.29
1799	9335.61	0.21
1800	6849.50	0.16
1801	7193.60	0.17
1802	7190.76	0.17
1803	10472.92	0.24
1804	10022.27	0.23
1805	6431.75	0.15
1806	6431.75	0.15
1807	9072.58	0.21
1808	8813.65	0.20
1809	6276.37	0.14

PARCEL AREA TABLE		
Parcel #	Area (SF)	Area (Ac.)
1810	6264.73	0.14
1811	7434.38	0.17
1812	6169.67	0.14
1813	6210.14	0.14
1814	5535.00	0.13
1815	5535.00	0.13
1816	9113.30	0.21
1817	6156.17	0.14
1818	4979.28	0.11
1819	4978.71	0.11
1820	4978.71	0.11
1821	4978.71	0.11
1822	4978.71	0.11
1823	4978.99	0.11
1824	7247.25	0.17
1825	7819.15	0.18
1826	7335.29	0.17
1827	5620.88	0.13
1828	5443.92	0.12
1829	5326.89	0.12

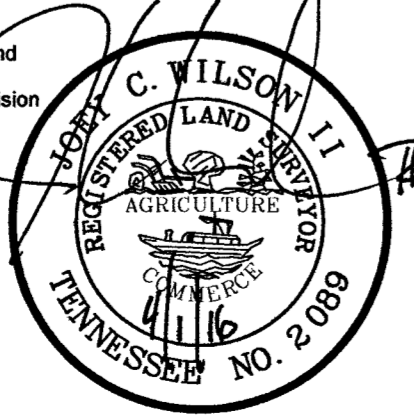
PARCEL AREA TABLE		
Parcel #	Area (SF)	Area (Ac.)
1830	5229.42	0.12
1831	6361.61	0.15
1832	6211.84	0.14
1833	6097.59	0.14
1834	6082.95	0.14
1835	6759.92	0.16



SITE DATA	
TOTAL AREA =	± 9.89 Ac. (430,665.93 sf)
TOTAL ROW =	± 2.39 Ac. (104,187.57 sf)
TOTAL LOT AREA =	± 7.49 Ac. (326,479.05 sf)

**SOUTHERN LAND COMPANY**  
**WESTHAVEN**  
 P.U.D. SUBDIVISION  
 SECTION 45

**Certificate of Survey**  
 I (we) hereby certify that the subdivision plat as shown hereon is correct and that all of the monuments shown hereon have been placed as indicated. This subdivision plat correctly represents a survey made under my supervision on the 2nd day of February, 2016.  
  
 J. C. Wilson II, PE, RLS Tennessee RLS No. 2889  
 Wilson & Associates, P.C.  
 Engineering/Surveying/Environmental  
 108 Beasley Drive, Franklin, TN 37064  
 Office: 615.794.2275 FAX 615.794.2176  
 jwilson@wilsonpc.com

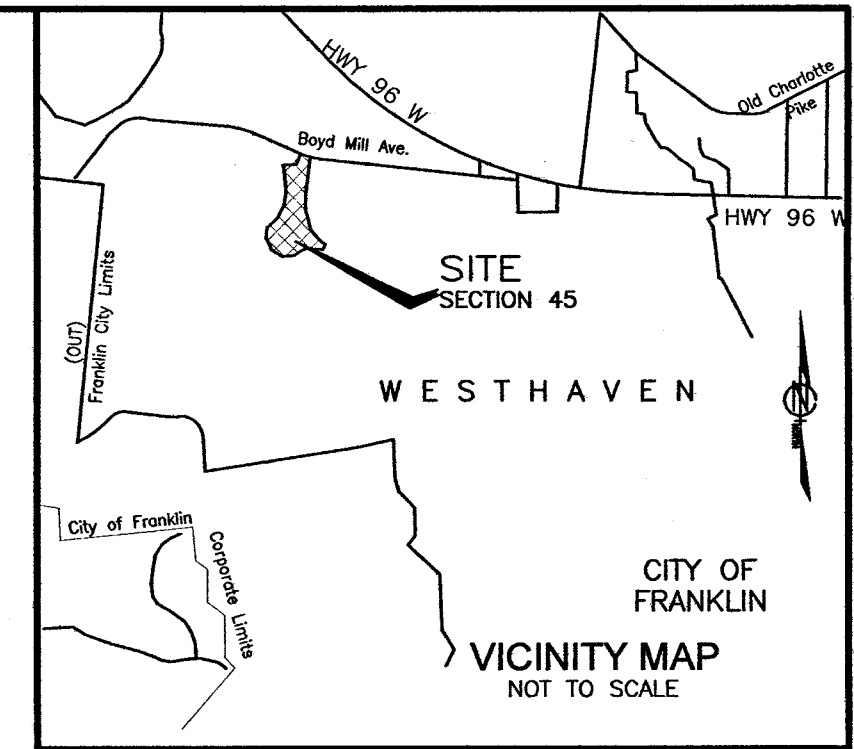
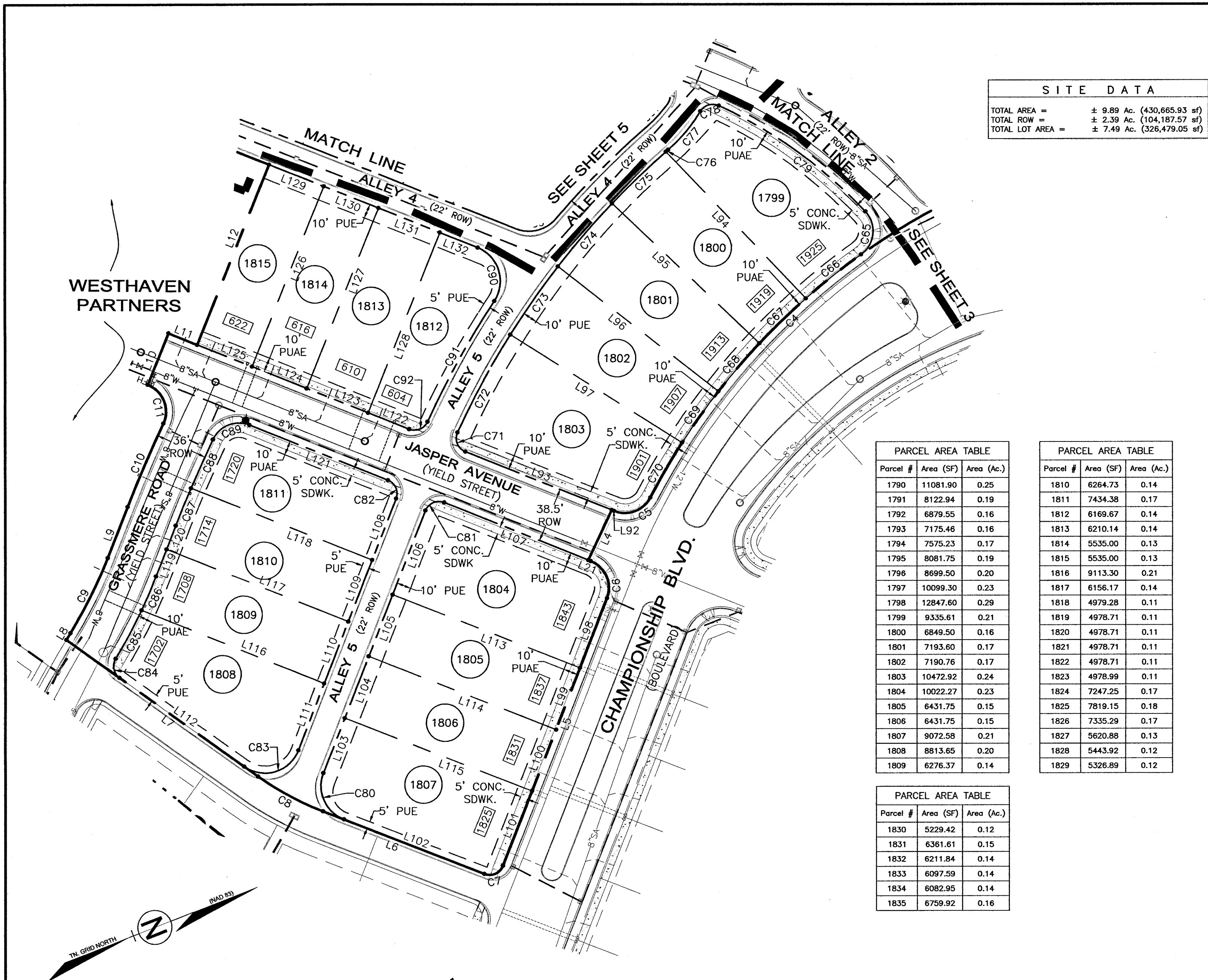


GRAPHIC SCALE

<b>Legend</b> Existing Iron Rod Iron Rod Set Existing Concrete Monument Concrete Monument Set Storm Catchbasin Sewer Manhole Street Address	<b>Legend (cont.)</b> Water Valve Fire Hydrant Street Light Sidewalk Pattern Public Utility & Drainage Esmt. P.U.D.E. Public Drainage Esmt. P.D.E. Public Utility & Access Esmt. P.U.A.E.
--	--

**CERTIFICATE OF APPROVAL OF RECORDING**  
 Approved by the Franklin Municipal Planning Commission, Franklin, Williamson County, Tennessee, with the exception of such conditions, if any, as are noted in the Planning Commission minutes for the \_\_\_ day of \_\_\_\_\_, 20\_\_\_, and this plat has been approved for recording in the Register's Office of Williamson County, Tennessee.  
 Secretary \_\_\_\_\_ Date \_\_\_\_\_  
 Franklin Municipal Planning Commission

FINAL SUBDIVISION PLAT	
FRANKLIN - WILLIAMSON COUNTY - TENNESSEE	
TOTAL ACRES 9.89	TOTAL # OF LOTS 46
ACRES NEW RD/ST 2.40 (ROW)	L.F. OF NEW RD/ST 1203.01
ACRES OPEN SPACE 0.0	CIVIL DISTRICT 5 <sup>th</sup>
DRAWN BY JAG	CLOSURE ERROR < 1:10,000
SCALE = 1"=50'	DATE = 03/14/16
COF PROJECT # 6077	SHEET 3 OF 5



SITE DATA	
TOTAL AREA =	± 9.89 Ac. (430,665.93 sf)
TOTAL ROW =	± 2.39 Ac. (104,187.57 sf)
TOTAL LOT AREA =	± 7.49 Ac. (326,479.05 sf)

WESTHAVEN PARTNERS

PARCEL AREA TABLE		
Parcel #	Area (SF)	Area (Ac.)
1790	11081.90	0.25
1791	8122.94	0.19
1792	6879.55	0.16
1793	7175.46	0.16
1794	7575.23	0.17
1795	8081.75	0.19
1796	8699.50	0.20
1797	10099.30	0.23
1798	12847.60	0.29
1799	9335.61	0.21
1800	6849.50	0.16
1801	7193.60	0.17
1802	7190.76	0.17
1803	10472.92	0.24
1804	10022.27	0.23
1805	6431.75	0.15
1806	6431.75	0.15
1807	9072.58	0.21
1808	8813.65	0.20
1809	6276.37	0.14

PARCEL AREA TABLE		
Parcel #	Area (SF)	Area (Ac.)
1810	6264.73	0.14
1811	7434.38	0.17
1812	6169.67	0.14
1813	6210.14	0.14
1814	5535.00	0.13
1815	5535.00	0.13
1816	9113.30	0.21
1817	6156.17	0.14
1818	4979.28	0.11
1819	4978.71	0.11
1820	4978.71	0.11
1821	4978.71	0.11
1822	4978.71	0.11
1823	4978.99	0.11
1824	7247.25	0.17
1825	7819.15	0.18
1826	7335.29	0.17
1827	5620.88	0.13
1828	5443.92	0.12
1829	5326.89	0.12

PARCEL AREA TABLE		
Parcel #	Area (SF)	Area (Ac.)
1830	5229.42	0.12
1831	6361.61	0.15
1832	6211.84	0.14
1833	6097.59	0.14
1834	6082.95	0.14
1835	6759.92	0.16

DETACHED RESIDENTIAL LOT TREE CHART							
Lot #	Lot Size	ACI	# Trees	Lot #	Lot Size	ACI	# Trees
1790	11,082 sf	12	4	1813	6210 sf	6	2
1791	8123 sf	6	2	1814	5535 sf	6	2
1792	6880 sf	6	2	1815	5535 sf	6	2
1793	7176 sf	6	2	1816	9113 sf	6	2
1794	7575 sf	6	2	1817	6156 sf	6	2
1795	8082 sf	6	2	1818	4979 sf	6	2
1796	8700 sf	6	2	1819	4979 sf	6	2
1797	10,099 sf	12	4	1820	4979 sf	6	2
1798	12,848 sf	12	4	1821	4979 sf	6	2
1799	9335 sf	6	2	1822	4979 sf	6	2
1800	6850 sf	6	2	1823	4979 sf	6	2
1801	7194 sf	6	2	1824	7247 sf	6	2
1802	7191 sf	6	2	1825	7819 sf	6	2
1803	10,473 sf	12	4	1826	7335 sf	6	2
1804	10,022 sf	12	4	1827	5621 sf	6	2
1805	6432 sf	6	2	1828	5444 sf	6	2
1806	6432 sf	6	2	1829	5327 sf	6	2
1807	9073 sf	6	2	1830	5229 sf	6	2
1808	8814 sf	6	2	1831	6362 sf	6	2
1809	6276 sf	6	2	1832	6212 sf	6	2
1810	6265 sf	6	2	1833	6098 sf	6	2
1811	7434 sf	6	2	1834	6083 sf	6	2
1812	6170 sf	6	2	1835	6760 sf	6	2

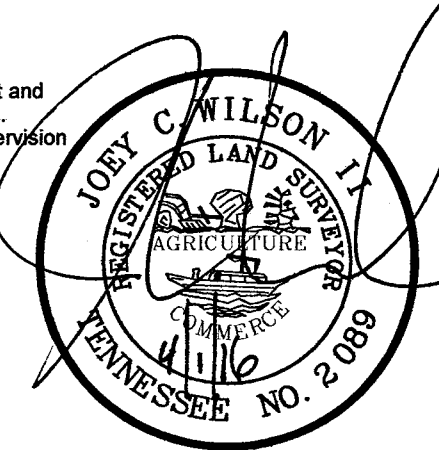
SOUTHERN LAND COMPANY  
**WESTHAVEN**  
 P.U.D. SUBDIVISION  
 SECTION 45

FINAL SUBDIVISION PLAT

FRANKLIN - WILLIAMSON COUNTY - TENNESSEE	
TOTAL ACRES 9.89	TOTAL # OF LOTS 46
ACRES NEW RD/ST 2.40 (ROW)	L.F. OF NEW RD/ST 1203.01
ACRES OPEN SPACE 0.0	CIVIL DISTRICT 5 <sup>th</sup>
DRAWN BY JAG	CLOSURE ERROR < 1:10,000
SCALE = 1"=50'	DATE = 03/14/16

COF PROJECT # 6077 SHEET 4 OF 5

Certificate of Survey  
 I (we) hereby certify that the subdivision plat as shown hereon is correct and that all of the monuments shown hereon have been placed as indicated. This subdivision plat correctly represents a survey made under my supervision on the 23<sup>rd</sup> day of February, 2016.  
 [Signature]  
 Joey C. Wilson, II, PE, RLS Tennessee RLS No. 2089  
 Wilson & Associates, P.C.  
 Engineering/Surveying/Environmental  
 708 Beasley Drive, Franklin, TN 37064  
 Office: 615.794.2275 FAX 615.794.2176  
 jwilson@wilsonpc.com



- |                            |  |
|----------------------------|--|
| <b>Legend</b>              | <b>Legend (cont.)</b>                    |
| Existing Iron Rod          | Water Valve                              |
| Iron Rod Set               | Fire Hydrant                             |
| Existing Concrete Monument | Street Light                             |
| Concrete Monument Set      | Sidewalk Pattern                         |
| Storm Catchbasin           | Public Utility & Drainage Esmt. P.U.D.E. |
| Sewer Manhole              | Public Drainage Esmt. P.D.E.             |
| Street Address             | Public Utility & Access Esmt. P.U.A.E.   |

CERTIFICATE OF APPROVAL OF RECORDING

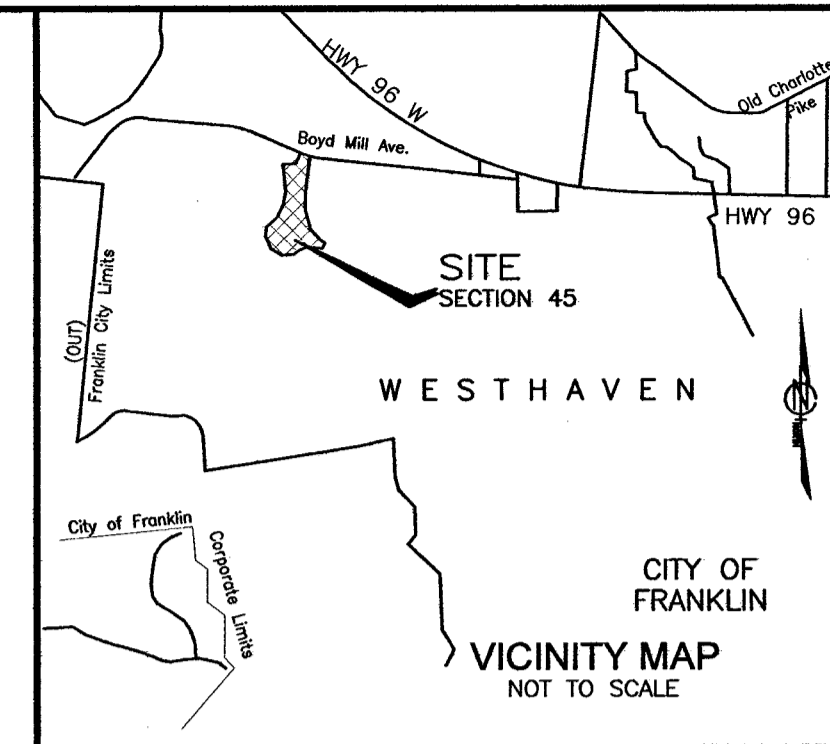
Approved by the Franklin Municipal Planning Commission, Franklin, Williamson County, Tennessee, with the exception of such conditions, if any, as are noted in the Planning Commission minutes for the \_\_\_ day of \_\_\_, 20\_\_\_, and this plat has been approved for recording in the Register's Office of Williamson County, Tennessee.  
 Secretary \_\_\_\_\_ Date \_\_\_\_\_  
 Franklin Municipal Planning Commission

PARCEL AREA TABLE		
Parcel #	Area (SF)	Area (Ac.)
1790	11081.90	0.25
1791	8122.94	0.19
1792	6879.55	0.16
1793	7175.46	0.16
1794	7575.23	0.17
1795	8081.75	0.19
1796	8699.50	0.20
1797	10099.30	0.23
1798	12847.60	0.29
1799	9335.61	0.21
1800	6849.50	0.16
1801	7193.60	0.17
1802	7190.76	0.17
1803	10472.92	0.24
1804	10022.27	0.23
1805	6431.75	0.15
1806	6431.75	0.15
1807	9072.58	0.21
1808	8813.65	0.20
1809	6276.37	0.14

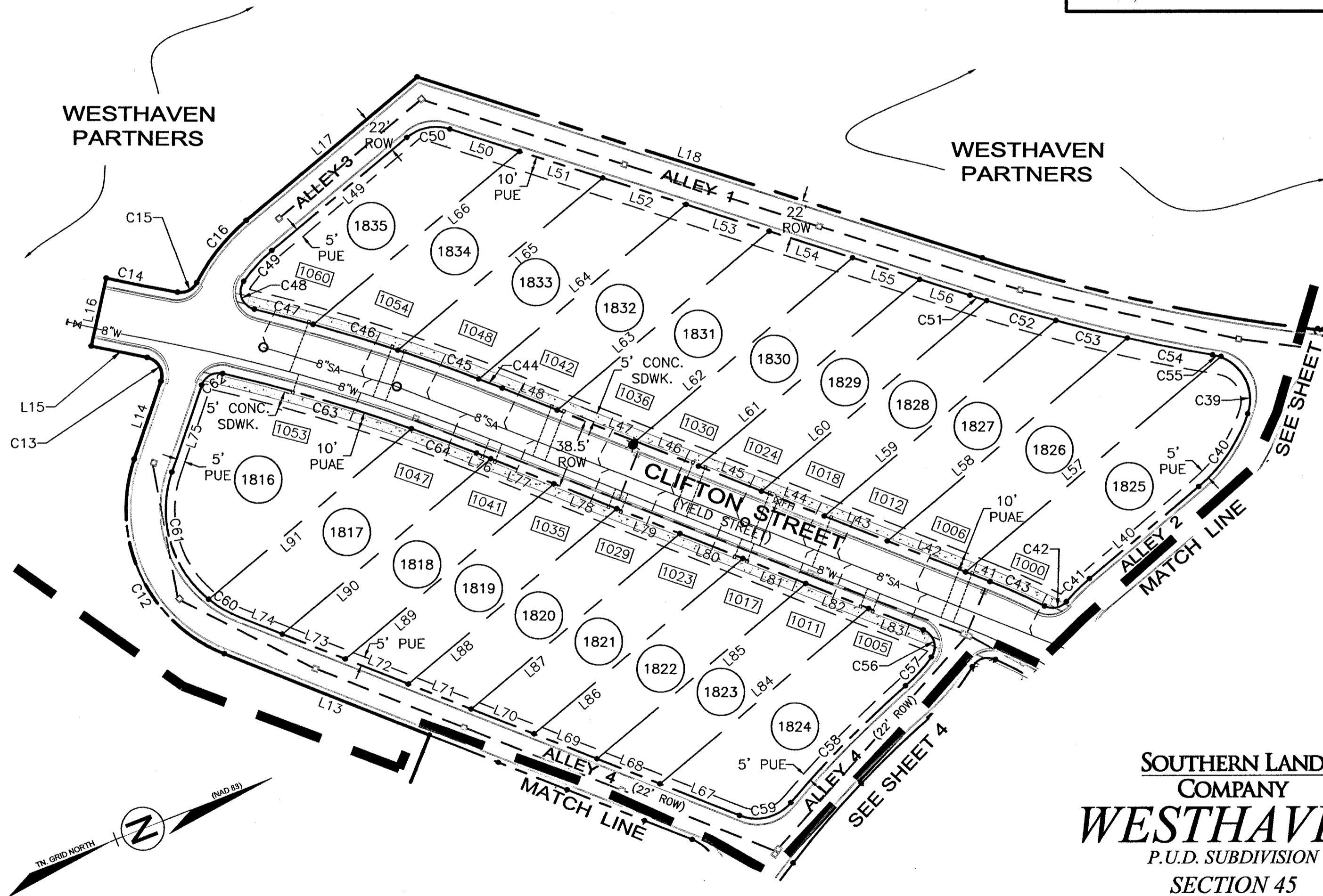
PARCEL AREA TABLE		
Parcel #	Area (SF)	Area (Ac.)
1810	6264.73	0.14
1811	7434.38	0.17
1812	6169.67	0.14
1813	6210.14	0.14
1814	5535.00	0.13
1815	5535.00	0.13
1816	9113.30	0.21
1817	6156.17	0.14
1818	4979.28	0.11
1819	4978.71	0.11
1820	4978.71	0.11
1821	4978.71	0.11
1822	4978.71	0.11
1823	4978.99	0.11
1824	7247.25	0.17
1825	7819.15	0.18
1826	7335.29	0.17
1827	5620.88	0.13
1828	5443.92	0.12
1829	5326.89	0.12

PARCEL AREA TABLE		
Parcel #	Area (SF)	Area (Ac.)
1830	5229.42	0.12
1831	6361.61	0.15
1832	6211.84	0.14
1833	6097.59	0.14
1834	6082.95	0.14
1835	6759.92	0.16

SITE DATA	
TOTAL AREA =	± 9.89 Ac. (430,665.93 sf)
TOTAL ROW =	± 2.39 Ac. (104,187.57 sf)
TOTAL LOT AREA =	± 7.49 Ac. (326,479.05 sf)



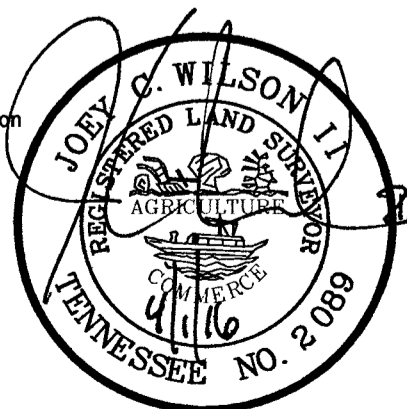
DETACHED RESIDENTIAL LOT TREE CHART							
Lot #	Lot Size	ACI	# Trees	Lot #	Lot Size	ACI	# Trees
1790	11,082 sf	12	4	1813	6210 sf	6	2
1791	8123 sf	6	2	1814	5535 sf	6	2
1792	6880 sf	6	2	1815	5535 sf	6	2
1793	7176 sf	6	2	1816	9113 sf	6	2
1794	7575 sf	6	2	1817	6156 sf	6	2
1795	8082 sf	6	2	1818	4979 sf	6	2
1796	8700 sf	6	2	1819	4979 sf	6	2
1797	10,099 sf	12	4	1820	4979 sf	6	2
1798	12,848 sf	12	4	1821	4979 sf	6	2
1799	9335 sf	6	2	1822	4979 sf	6	2
1800	6850 sf	6	2	1823	4979 sf	6	2
1801	7194 sf	6	2	1824	7247 sf	6	2
1802	7191 sf	6	2	1825	7819 sf	6	2
1803	10,473 sf	12	4	1826	7335 sf	6	2
1804	10,022 sf	12	4	1827	5621 sf	6	2
1805	6432 sf	6	2	1828	5444 sf	6	2
1806	6432 sf	6	2	1829	5327 sf	6	2
1807	9073 sf	6	2	1830	5229 sf	6	2
1808	8814 sf	6	2	1831	6362 sf	6	2
1809	6276 sf	6	2	1832	6212 sf	6	2
1810	6265 sf	6	2	1833	6098 sf	6	2
1811	7434 sf	6	2	1834	6083 sf	6	2
1812	6170 sf	6	2	1835	6760 sf	6	2



SOUTHERN LAND COMPANY  
**WESTHAVEN**  
 P.U.D. SUBDIVISION  
 SECTION 45

**Certificate of Survey**  
 I (we) hereby certify that the subdivision plat as shown hereon is correct and that all of the monuments shown hereon have been placed as indicated. This subdivision plat correctly represents a survey made under my supervision on the 2nd day of February, 2016.

JOEY C. WILSON, II, PE, RLS Tennessee RLS No. 2089  
 Wilson & Associates, P.C.  
 Engineering/Surveying/Environmental  
 108 Beasley Drive, Franklin, TN 37064  
 Office: 615.794.2275 FAX 615.794.2176  
 jwilson@wilsonpc.com



Legend		Legend (cont.)	
Existing Iron Rod	○	Water Valve	⊕
Iron Rod Set	●	Fire Hydrant	⊕
Existing Concrete Monument	□	Street Light	⊕
Concrete Monument Set	■	Sidewalk Pattern	■
Storm Catchbasin	■	Public Utility & Drainage Esmt.	P.U.D.E.
Sewer Manhole	○	Public Drainage Esmt.	P.D.E.
Street Address	1234	Public Utility & Access Esmt.	P.U.A.E.

**CERTIFICATE OF APPROVAL OF RECORDING**

Approved by the Franklin Municipal Planning Commission, Franklin, Williamson County, Tennessee, with the exception of such conditions, if any, as are noted in the Planning Commission minutes for the \_\_\_ day of \_\_\_, 20\_\_\_, and this plat has been approved for recording in the Register's Office of Williamson County, Tennessee.

Secretary \_\_\_\_\_ Date \_\_\_\_\_  
 Franklin Municipal Planning Commission

**FINAL SUBDIVISION PLAT**

FRANKLIN - WILLIAMSON COUNTY - TENNESSEE

TOTAL ACRES 9.89	TOTAL # OF LOTS 46
ACRES NEW RD/ST 2.40 (ROW)	L.F. OF NEW RD/ST 1203.01
ACRES OPEN SPACE 0.0	CIVIL DISTRICT 5 <sup>th</sup>
DRAWN BY JAG	CLOSURE ERROR < 1:10,000
SCALE = 1"=50'	DATE = 03/14/16

COF PROJECT # 6077

SHEET 5 OF 5