

COF 2014-0326

Exhibit A

PG 1 of 4

SITE CONSTRUCTION PLANS FOR

FIVE MILE CREEK WATER LINE CONNECTION

FRANKLIN, WILLIAMSON COUNTY, TENNESSEE
CITY OF FRANKLIN PROJECT NO. 4679
GSP JOB NO. 26567.00

SITE DATA

PROJECT NAME: FIVE MILE CREEK WATER LINE CONNECTION
PROJECT #: 4679
LOT NUMBER:
ADDRESS:
CITY: FRANKLIN
COUNTY: WILLIAMSON
CIVIL DISTRICT: 10TH
ZONING: M (LOCAL MIXED-USE)
CHARACTER AREA: CCCC-3 (GOOSE CREEK CHARACTER OVERLAY)
OTHER APPLICABLE OVERLAYS:
AGREEMENT OF SITE:
SQUARE FOOTAGE OF SITE:

MINIMUM REQUIRED SETBACK LINES:
MINIMUM SETBACK ON ANY STREET: LOCAL-30', COLLECTOR-40', ARTERIAL-50'
SIDE YARD: 10'
REAR YARD: 30'

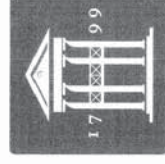
OWNER: CITY OF FRANKLIN
PHONE NO.: 615-779-3376
E-MAIL ADDRESS: PAUL.HOLZEN@FRANKLIN.TN.GOV
CONTACT NAME: PAUL HOLZEN

APPLICANT: GRESHAM, SMITH AND PARTNERS
ADDRESS: 1400 NASHVILLE CITY CENTER, 511 UNION ST.,
NASHVILLE, TN 37219
PHONE NO.: 615-770-8100
FAX NO.: 866-712-3376
E-MAIL ADDRESS: ROB.WHITSON@GSPNET.COM
CONTACT NAME: ROB WHITSON, P.E. (TN#112946)

MINERAL RIGHTS FOR THIS PROPERTY
ARE HELD BY OWNER OF RECORD.



SITE INDEX
CO.1 COVER SHEET AND INDEX
CO.2 SITE NOTES
CA.1 WATER LINE PLAN AND PROFILE
CB.1 SITE DETAILS



HISTORIC
FRANKLIN
TENNESSEE

CITY OF FRANKLIN
ENGINEERING DEPT.
12/30/14
APPROVED Utility Use

APPLICANT MUST PROVIDE CUT SHEETS TO THE WATER AND SEWER DEPARTMENT.

THE FIRE MARSHALL SHALL DETERMINE THE LOCATIONS & SPACING OF FIRE HYDRANTS.

THIS PLAN HAS BEEN REVIEWED FOR CONFORMANCE WITH THE STANDARDS AND SPECIFICATIONS BY THE CITY OF FRANKLIN AND IS HEREBY APPROVED FOR CONSTRUCTION. THIS APPROVAL SHALL NOT BE INTERPRETED AS A GUARANTEE OF THE ACCURACY OF THE INFORMATION PROVIDED OR THE DESIGN GOALS. IN ADDITION, THE APPLICANT MUST CONTACT THE WATER AND SEWER DEPT. WITH THE DESIGNER FOR ANY COMMENTS AND APPROVALS ON THE MATERIALS LIST OF MATERIALS.

IF THESE PLANS ARE APPROVED AS NOTED:
 WATER SEWER RAINWATER
 BY: Paul P. Holzen
 HISTORIC FRANKLIN TENNESSEE
 DATE: 12/30/14
 APPROVAL EXPIRES ONE YEAR AFTER DATE OF APPROVAL.

PROJECT DATUM: PROVIDED BY TENNESSEE DEPARTMENT OF TRANSPORTATION, TENNESSEE GEODETIC REFERENCE NETWORK, GFS 27 LOCATED 0.15 ML EAST OF JUNCTION OF I-65 AND MOORES LANE ON SOUTH ROW OF MOORES LANE. ELEV. = 735.67

SITE BM: CHISELED SQUARE ON SOUTHEAST TOP EDGE WINGWALL LOCATED AT OLD PEYTONVILLE ROAD AND FIVEMILE CREEK. ELEV. = 658.13



Design Services
For The Built
Environment

- Atlanta
- Birmingham
- Charlotte
- Cincinnati
- Columbus
- Dallas
- Fort Lauderdale
- Jacksonville
- Knoxville
- Louisville
- Nashville
- Memphis
- Richmond
- Tampa

GRESHAM
SMITH AND
PARTNERS
1400 NASHVILLE CITY CENTER
NASHVILLE, TENNESSEE 37219
WWW.GSPNET.COM

COF# 4679

Site Construction Plans for
Five Mile Creek
Water Line
Connection

Franklin, Williamson County, Tennessee



REVISION

No.	Date	Revision
1	11.06.14	COMMENTS
2	12.16.14	COMMENTS

COVER SHEET
AND INDEX

CO.1
PROJECT: 4679
DATE: 12/30/14



Design Services For the Built Environment

Atlanta
Birmingham
Charlotte
Cincinnati
Columbus
Dallas
Fort Lauderdale
Jacksonville
Knoxville
Louisville
Nashville
Memphis
Richmond
Tampa

GRESHAM SMITH AND PARTNERS
1800 MARSHALL CITY CENTER
NASHVILLE, TENNESSEE 37219
www.gshamp.com

COFF#4879

Site Construction Plans for
Five Mile Creek Water Line Connection

Franklin, Williamson County, Tennessee



REVISION	No.	Date	Revision
	1	11.06.14	ISSUE FOR PERMITS
	2	12.10.14	COMMENTS

SITE NOTES

C0.2
PROJECT: 12-10-14
DATE: 12.10.14

CITY OF FRANKLIN
ENGINEERING DEPT.
12/30/14
This sheet is part of the Franklin Water Line Project

GENERAL UTILITY NOTES

1. THE CONSTRUCTION SHALL BE PERFORMED IN ACCORDANCE WITH ALL LOCAL CODES AND SPECIFICATIONS.
2. THE CONTRACTOR SHALL PAY ALL FEES AND OBTAIN ALL PERMITS.
3. ALL EXISTING UNDERGROUND UTILITY LOCATIONS ARE APPROXIMATE AND ARE BASED ON TOPOGRAPHIC SURVEYS AND RECORD DRAWINGS FROM THE FACILITY. ADDITIONAL UTILITIES INCLUDING IRRIIGATION LINES, TAKE CARE TO PROTECT UTILITIES THAT ARE TO REMAIN. THE CONTRACTOR SHALL VERIFY THE EXACT LOCATION OF ALL EXISTING UTILITIES INCLUDING IRRIIGATION LINES, TAKE CARE TO PROTECT UTILITIES THAT ARE TO REMAIN. THE CONTRACTOR SHALL VERIFY THE EXACT LOCATION OF ALL EXISTING UTILITIES INCLUDING IRRIIGATION LINES, TAKE CARE TO PROTECT UTILITIES THAT ARE TO REMAIN. THE CONTRACTOR SHALL VERIFY THE EXACT LOCATION OF ALL EXISTING UTILITIES INCLUDING IRRIIGATION LINES, TAKE CARE TO PROTECT UTILITIES THAT ARE TO REMAIN.
4. THE CONTRACTOR SHALL NOTIFY THE TENNESSEE ONE-CALL SYSTEM, INC. (TODS) AT LEAST 72 HOURS PRIOR TO ANY LOCATION AND/OR REMEDIATION.
5. MAINTAIN 10-FOOT HORIZONTAL AND 18-INCH VERTICAL SEPARATION BETWEEN SANITARY SEWER AND WATER SUPPLY LINES.
6. CONTRACTOR SHALL VERIFY THE EXACT LOCATION OF ALL EXISTING UTILITIES INCLUDING IRRIIGATION LINES, TAKE CARE TO PROTECT UTILITIES THAT ARE TO REMAIN. THE CONTRACTOR SHALL VERIFY THE EXACT LOCATION OF ALL EXISTING UTILITIES INCLUDING IRRIIGATION LINES, TAKE CARE TO PROTECT UTILITIES THAT ARE TO REMAIN. THE CONTRACTOR SHALL VERIFY THE EXACT LOCATION OF ALL EXISTING UTILITIES INCLUDING IRRIIGATION LINES, TAKE CARE TO PROTECT UTILITIES THAT ARE TO REMAIN.
7. THE CONTRACTOR SHALL BE RESPONSIBLE FOR OBTAINING THE NECESSARY CONSTRUCTION PERMITS FROM THE CITY OF FRANKLIN AND WILLIAMSON COUNTY. THE CONTRACTOR SHALL BE RESPONSIBLE FOR OBTAINING THE NECESSARY CONSTRUCTION PERMITS FROM THE CITY OF FRANKLIN AND WILLIAMSON COUNTY. THE CONTRACTOR SHALL BE RESPONSIBLE FOR OBTAINING THE NECESSARY CONSTRUCTION PERMITS FROM THE CITY OF FRANKLIN AND WILLIAMSON COUNTY.
8. BACKFILL UTILITIES TRENCHES IN URBAN AREAS WITH SATISFACTORY FILL MATERIAL COMPACTED TO AT LEAST 95% OF MAXIMUM PER ASTM D998.
9. ADJUST ALL EXISTING CASTINGS TO MATCH PROPOSED FINISH GRADE.
10. THROAT BLOCK ALL WATERLINE FITTINGS WITH CONCRETE (2,500 P.S.I. MIN.) POURING TIGHTLY INSULATED LAYED TO A MINIMUM 120 PERCENT. THE BLOCKS OF CONCRETE SHALL BE PLACED AT HIGH POINTS IN WATERLINE AS NECESSARY FOR PREVENTING AIR DURING FILLING OF WATER LINE. PROVIDE BRONZE COPPERATION STOP FOR CLOSING VENT DURING SUCCESSFUL TEST. LEAVE VENT COMPONENTS PLUGGED AND ATTACHED TO PIPE AFTER SUCCESSFUL TEST.
12. EXCESS MATERIAL SHALL BE DISPOSED OF BY THE CONTRACTOR OFF THE OWNER'S PROPERTY AT NO ADDITIONAL COST IN A LEGAL MANNER.
13. ALL WATER MAINS SHALL BE PRESSURE CLASS 350 DP UNLESS NOTED OTHERWISE.
14. ALL FIRE HYDRANT ASSEMBLIES SHALL BE INSTALLED BETWEEN 3' AND 7' FROM PAVED SURFACE.
15. PROVIDE AS-BUILT DRAWINGS WHICH INCLUDE AT LEAST TWO DIMENSIONS TO EACH VALVE AND MANHOLE FROM ANCHOR ON ALL NEW UTILITIES AS WELL AS EXISTING UTILITIES.
16. ALL PUBLIC WATER LINE CONSTRUCTION SHALL COMPLY WITH CITY OF FRANKLIN STANDARD SPECIFICATIONS AND SHALL BE TESTED PRIOR TO FINAL ACCEPTANCE OF THE WATERLINE.

STORMWATER POLLUTION PREVENTION NOTES

1. THE OWNER AND THE CONTRACTOR ARE REQUIRED TO SUBMIT A NOTICE OF INTENT (NOI) TO THE ENVIRONMENTAL ASSISTANCE CENTER AT LEAST 30 DAYS PRIOR TO BEGINNING CONSTRUCTION. THE CONTRACTOR SHALL BE RESPONSIBLE FOR OBTAINING THE NECESSARY CONSTRUCTION PERMITS FROM THE CITY OF FRANKLIN AND WILLIAMSON COUNTY. THE CONTRACTOR SHALL BE RESPONSIBLE FOR OBTAINING THE NECESSARY CONSTRUCTION PERMITS FROM THE CITY OF FRANKLIN AND WILLIAMSON COUNTY.
2. THE NOTICE OF INTENT (NOI) OF THE PERMIT TO DISCHARGE CONSTRUCTION-EROSION CONTROL MATERIALS SHALL BE POSTED NEAR THE CONSTRUCTION ENTRANCE. THE CONTRACTOR SHALL HAVE A SET OF APPROVED EROSION CONTROL PLANS ON SITE DURING ALL CONSTRUCTION.
3. EROSION CONTROL ASSEMBLIES WITH THESE THE CONSTRUCTION, TOPSOIL, AND SEEDING MATERIALS.
4. THE REDUCED WATER/STORM SEWER OPERATOR IS FIVE MILE CREEK AND/OR SHOT ROCK.
5. CONSTRUCTION SHALL BE SCHEDULED TO MINIMIZE EXPOSURE TIME OF CLEARED SURFACE AREA. EROSION AND SEDIMENT CONTROL MEASURES SHALL BE IN PLACE AND FUNCTIONAL WITHIN 24 HOURS OF ANY RAINFALL EXCEEDING 0.5 INCH PER 24 HOUR PERIOD.
6. THE CONTRACTOR SHALL DESIGNATE IN WRITING THE NAME AND PHONE NUMBER OF THE INDIVIDUAL RESPONSIBLE FOR EROSION AND SEDIMENT CONTROL.
7. PRE-CONSTRUCTION VEGETATION COVER SHALL NOT BE REMOVED MORE THAN 20 PERCENT AND UNPAVED AREAS SHALL BE COVERED WITH TEMPORARY STABILIZATION SHALL BE INSTALLED WITHIN 15 CALENDAR DAYS OF FINAL GRADING.
8. THE CONTRACTOR SHALL MAINTAIN RECORDS OF EROSION CONTROL, INSPECTIONS AND REPAIRS FOR A MINIMUM OF 3 YEARS AFTER COMPLETION OF CONSTRUCTION.
9. TEMPORARY SEEDING FOR TENNESSEE PROJECTS INCLUDE THE FOLLOWING OPTIONS:

JAN	1	-	MAY	1	ITALIAN PINE/FOREMAN LEAFLESS/20% SUMMER OATS
JUN	1	-	JULY	15	SUDAN OR START MILET
AUG	1	-	NOV	15	BALDO RY/FOREMAN PINE
10. MULCHING SHALL BE APPLIED AT THE RATE OF 2 TONS/ACRE.
11. THE CONTRACTOR SHALL REMOVE EXCESS TOPSOIL FROM THE CONSTRUCTION SITE.
12. STOCKPILES SHALL BE STABILIZED AND PROTECTED FROM EROSION.
13. STOCKPILES SHALL BE STABILIZED AND PROTECTED FROM EROSION.
14. STOCKPILES SHALL BE STABILIZED AND PROTECTED FROM EROSION.
15. STOCKPILES SHALL BE STABILIZED AND PROTECTED FROM EROSION.
16. STOCKPILES SHALL BE STABILIZED AND PROTECTED FROM EROSION.
17. STOCKPILES SHALL BE STABILIZED AND PROTECTED FROM EROSION.

J. D. Smith
SIGNATURE
DATE: 12.10.14

GRADING, DRAINAGE AND EROSION CONTROL NOTES

1. NO TREES SHALL BE REMOVED NOR VEGETATION DISTURBED EXCEPT AS NECESSARY FOR GRADING PURPOSES AND AS APPROVED BY THE ARCHITECT/ENGINEER.
2. IT IS THE OWNER'S INTENT TO PRESERVE ALL OF THE EXISTING SITE VEGETATION OUTSIDE THE CONSTRUCTION LIMITS.
3. ALL TREES INCLUDING YOUNG SAVANAS, PINES, AND UNDESIRABLE SPECIES ARE TO BE PROTECTED AND SAVED IF THEY FALL OUTSIDE THE LIMITS OF GRADING, EVEN IF THEY ARE NOT LOCATED OR IDENTIFIED ON THE SURVEY.
4. SELECTIVE CLEARING BEYOND THE LIMIT OF GRADING SHALL CONSIST OF REMOVAL OF WEEDS, BRUSH, AND OTHER UNDESIRABLE SPECIES. THE CONTRACTOR SHALL BE RESPONSIBLE FOR OBTAINING THE NECESSARY CONSTRUCTION PERMITS FROM THE CITY OF FRANKLIN AND WILLIAMSON COUNTY. THE CONTRACTOR SHALL BE RESPONSIBLE FOR OBTAINING THE NECESSARY CONSTRUCTION PERMITS FROM THE CITY OF FRANKLIN AND WILLIAMSON COUNTY.
5. TOPSOIL SHALL BE STRIPPED FROM ALL CUT AND FILL AREAS, STOCKPILED AND REDISTRIBUTED OVER GRADED AREAS TO A MINIMUM DEPTH OF 6 INCHES. MAKE STOCKPILES FREE FROM WEEDS AND OTHER UNDESIRABLE SPECIES.
6. ALL GRADED AREAS SHALL BE SEEDED AND MULCHED WITHIN 15 DAYS AFTER GRADING IS COMPLETED.
7. CONSTRUCTION EROSION CONTROL, AS SHOWN ON THE DRAWINGS PRIOR TO BEGINNING GRADING OPERATIONS.
8. ALL DRAINAGE STRUCTURES, PIPES WITHIN THE LIMITS OF CONSTRUCTION, AND DETENTION POND SHALL HAVE SEDIMENT REMOVED PRIOR TO FINAL ACCEPTANCE.
9. SILT BARRIERS SHALL BE CLEANED OF ACCUMULATED SEDIMENT WHEN APPROXIMATELY 50% FULL.
10. ALL OPERATIONS OF TEMPORARY EROSION CONTROL DEVICES SHALL BE SUBJECT TO ADJUSTMENT AS DIRECTED BY THE ARCHITECT/ENGINEER.
11. WHEN THE TEMPORARY EROSION CONTROL DEVICES ARE NO LONGER REQUIRED FOR THE INTENDED PURPOSE (IN THE ARCHITECT/ENGINEER'S OPINION), THEY SHALL BE REMOVED.
12. REPLACE DAMAGED AND WORK OUT SILT BARRIERS AS DIRECTED BY THE ARCHITECT/ENGINEER.
13. THE CONTRACTOR SHALL PROTECT ALL TREES DESIGNATED TO REMAIN. DO NOT OPERATE OR STORE HEAVY EQUIPMENT, NOR HANDLE/STORE MATERIALS, WITHIN THE DRIPPLINES OF TREES.
14. THE CONTRACTOR SHALL VERIFY THE EXACT LOCATION OF ALL EXISTING UTILITIES, INCLUDING IRRIIGATION LINES, TAKE CARE TO PROTECT UTILITIES THAT ARE TO REMAIN. THE CONTRACTOR SHALL VERIFY THE EXACT LOCATION OF ALL EXISTING UTILITIES INCLUDING IRRIIGATION LINES, TAKE CARE TO PROTECT UTILITIES THAT ARE TO REMAIN.
15. NOTIFY LOCAL UTILITY LOCATOR SERVICE OF INTENDED EXCAVATION/UTILITY TRENCHING OPERATIONS. SEE GENERAL UTILITY NOTE #4 ON SHEET C0.2 FOR PHONE NUMBER.
16. IN THE EVENT OF ANY DISCREPANCIES FOUND IN THE DRAWINGS OR IF PROBLEMS ARE ENCOUNTERED DURING CONSTRUCTION, THE CONTRACTOR SHALL NOTIFY THE ARCHITECT/ENGINEER BEFORE PROCEEDING WITH THE WORK.
17. THE CONTRACTOR SHALL OBTAIN ALL NECESSARY NOTICES AND OBTAIN ALL PERMITS.
18. CONTRACTOR SHALL VERIFY EXISTING ELEVATIONS AND INVERTS PRIOR TO BEGINNING WORK.
19. EXCESS MATERIAL SHALL BE DISPOSED OF BY THE CONTRACTOR OFF THE OWNER'S PROPERTY AT NO ADDITIONAL COST IN A LEGAL MANNER.
20. EXISTING MANHOLE CASTINGS TO REMAIN SHALL BE RESET TO MATCH NEW GRADE.
21. ALL PIPES UNDER PAVED AREAS SHALL BE BACKFILLED WITH CRUSHED STONE. ALL PIPES UNDER UNPAVED AREAS SHALL BE BACKFILLED WITH SATISFACTORY MATERIAL COMPACTED TO 95% OF MAXIMUM PER ASTM D998.
22. ALL CUT AND FILL SLOPES TO BE 3:1 MAXIMUM.
23. STOCKPILES OF EXCESS TOPSOIL SHALL BE COVERED WITH A MINIMUM OF 6 INCHES OF CONTAMINANT-FREE TOPSOIL.
24. AFTER STRIPPING TOPSOIL, PROTECT SLOPES WITH A LOADED DUMP TRUCK WITH A MINIMUM WEIGHT OF 20 TONS.
25. FINISH GRADE TOLERANCES ARE 0.10 FOOT ABOVE OR BELOW DESIGN ELEVATIONS. ALL OTHER AREAS OF THE SITE SHALL REMAIN UNDISTURBED FOR 30 DAYS OR MORE.
26. PROVIDE TEMPORARY SEEDING ON STOCKPILES AND ALL OTHER AREAS OF THE SITE THAT WILL REMAIN UNDISTURBED FOR 30 DAYS OR MORE.
27. EARTHWORK FILL SHALL INCLUDE STRIPPING TOPSOIL AND PLACING ENGINEERED FILL IN MAXIMUM 8' COMPACTED LIFTS WITH DENSITY OF 95% OF MAXIMUM PER ASTM D998.
28. THE CONTRACTOR SHALL BE RESPONSIBLE FOR OBTAINING THE NECESSARY CONSTRUCTION PERMITS FROM THE CITY OF FRANKLIN AND WILLIAMSON COUNTY. THE CONTRACTOR SHALL BE RESPONSIBLE FOR OBTAINING THE NECESSARY CONSTRUCTION PERMITS FROM THE CITY OF FRANKLIN AND WILLIAMSON COUNTY.

UTILITY MODIFICATIONS

1. THE CONTRACTOR SHALL CHECK EXISTING CHANGES, SURVEYS AND INVERTS IN THE FIELD AND REPORT ANY DISCREPANCIES TO THE ARCHITECT/ENGINEER PRIOR TO BEGINNING WORK.
2. THE CONTRACTOR SHALL VERIFY THE EXACT LOCATION OF ALL EXISTING UTILITIES INCLUDING IRRIIGATION LINES, TAKE CARE TO PROTECT UTILITIES THAT ARE TO REMAIN. THE CONTRACTOR SHALL VERIFY THE EXACT LOCATION OF ALL EXISTING UTILITIES INCLUDING IRRIIGATION LINES, TAKE CARE TO PROTECT UTILITIES THAT ARE TO REMAIN.
3. THE CONTRACTOR SHALL NOTIFY THE TENNESSEE ONE-CALL SYSTEM, INC. (TODS) AT LEAST 72 HOURS PRIOR TO ANY LOCATION AND/OR REMEDIATION.
4. THE CONTRACTOR SHALL VERIFY THE EXACT LOCATION OF ALL EXISTING UTILITIES INCLUDING IRRIIGATION LINES, TAKE CARE TO PROTECT UTILITIES THAT ARE TO REMAIN. THE CONTRACTOR SHALL VERIFY THE EXACT LOCATION OF ALL EXISTING UTILITIES INCLUDING IRRIIGATION LINES, TAKE CARE TO PROTECT UTILITIES THAT ARE TO REMAIN.
5. ALL DAMAGE TO EXISTING ASPHALT PAVEMENT TO REMAIN WHICH RESULTS FROM NEW CONSTRUCTION SHALL BE REPLACED WITH LIKE MATERIALS AT THE CONTRACTOR'S EXPENSE.
6. EXCESS MATERIAL SHALL BE DISPOSED OF BY THE CONTRACTOR OFF THE OWNER'S PROPERTY AT NO ADDITIONAL COST IN A LEGAL MANNER.
7. MAINTAIN ONE SET OF AS-BUILT DRAWINGS ON THE JOB SITE FOR DISTRIBUTION TO THE ARCHITECT/ENGINEER UPON COMPLETION.

UTILITY MODIFICATIONS

1. THE CONTRACTOR SHALL CHECK EXISTING CHANGES, SURVEYS AND INVERTS IN THE FIELD AND REPORT ANY DISCREPANCIES TO THE ARCHITECT/ENGINEER PRIOR TO BEGINNING WORK.
2. THE CONTRACTOR SHALL VERIFY THE EXACT LOCATION OF ALL EXISTING UTILITIES INCLUDING IRRIIGATION LINES, TAKE CARE TO PROTECT UTILITIES THAT ARE TO REMAIN. THE CONTRACTOR SHALL VERIFY THE EXACT LOCATION OF ALL EXISTING UTILITIES INCLUDING IRRIIGATION LINES, TAKE CARE TO PROTECT UTILITIES THAT ARE TO REMAIN.
3. THE CONTRACTOR SHALL NOTIFY THE TENNESSEE ONE-CALL SYSTEM, INC. (TODS) AT LEAST 72 HOURS PRIOR TO ANY LOCATION AND/OR REMEDIATION.
4. THE CONTRACTOR SHALL VERIFY THE EXACT LOCATION OF ALL EXISTING UTILITIES INCLUDING IRRIIGATION LINES, TAKE CARE TO PROTECT UTILITIES THAT ARE TO REMAIN. THE CONTRACTOR SHALL VERIFY THE EXACT LOCATION OF ALL EXISTING UTILITIES INCLUDING IRRIIGATION LINES, TAKE CARE TO PROTECT UTILITIES THAT ARE TO REMAIN.
5. ALL DAMAGE TO EXISTING ASPHALT PAVEMENT TO REMAIN WHICH RESULTS FROM NEW CONSTRUCTION SHALL BE REPLACED WITH LIKE MATERIALS AT THE CONTRACTOR'S EXPENSE.
6. EXCESS MATERIAL SHALL BE DISPOSED OF BY THE CONTRACTOR OFF THE OWNER'S PROPERTY AT NO ADDITIONAL COST IN A LEGAL MANNER.
7. MAINTAIN ONE SET OF AS-BUILT DRAWINGS ON THE JOB SITE FOR DISTRIBUTION TO THE ARCHITECT/ENGINEER UPON COMPLETION.

UTILITY MODIFICATIONS

1. THE CONTRACTOR SHALL CHECK EXISTING CHANGES, SURVEYS AND INVERTS IN THE FIELD AND REPORT ANY DISCREPANCIES TO THE ARCHITECT/ENGINEER PRIOR TO BEGINNING WORK.
2. THE CONTRACTOR SHALL VERIFY THE EXACT LOCATION OF ALL EXISTING UTILITIES INCLUDING IRRIIGATION LINES, TAKE CARE TO PROTECT UTILITIES THAT ARE TO REMAIN. THE CONTRACTOR SHALL VERIFY THE EXACT LOCATION OF ALL EXISTING UTILITIES INCLUDING IRRIIGATION LINES, TAKE CARE TO PROTECT UTILITIES THAT ARE TO REMAIN.
3. THE CONTRACTOR SHALL NOTIFY THE TENNESSEE ONE-CALL SYSTEM, INC. (TODS) AT LEAST 72 HOURS PRIOR TO ANY LOCATION AND/OR REMEDIATION.
4. THE CONTRACTOR SHALL VERIFY THE EXACT LOCATION OF ALL EXISTING UTILITIES INCLUDING IRRIIGATION LINES, TAKE CARE TO PROTECT UTILITIES THAT ARE TO REMAIN. THE CONTRACTOR SHALL VERIFY THE EXACT LOCATION OF ALL EXISTING UTILITIES INCLUDING IRRIIGATION LINES, TAKE CARE TO PROTECT UTILITIES THAT ARE TO REMAIN.
5. ALL DAMAGE TO EXISTING ASPHALT PAVEMENT TO REMAIN WHICH RESULTS FROM NEW CONSTRUCTION SHALL BE REPLACED WITH LIKE MATERIALS AT THE CONTRACTOR'S EXPENSE.
6. EXCESS MATERIAL SHALL BE DISPOSED OF BY THE CONTRACTOR OFF THE OWNER'S PROPERTY AT NO ADDITIONAL COST IN A LEGAL MANNER.
7. MAINTAIN ONE SET OF AS-BUILT DRAWINGS ON THE JOB SITE FOR DISTRIBUTION TO THE ARCHITECT/ENGINEER UPON COMPLETION.

J. D. Smith
SIGNATURE
DATE: 12.10.14

COF 2014-0326
Exhibit A
PG 2 of 4

UTILITY MODIFICATIONS

CITY OF FRANKLIN
1015 S. GAY ST.
FRANKLIN, TN 37064
FOOT: (615) 794-8884
AFTER HOUR: (615) 791-1260
http://www.franklin-tn.gov/watersewer.aspx

CITY OF FRANKLIN
Engineering Department
1015 S. GAY ST.
FRANKLIN, TN 37064
FOOT: (615) 794-8884
AFTER HOUR: (615) 791-1260
http://www.franklin-tn.gov/coweng/fees/rfg.aspx

Naturel, Inc.
Ron Wright
North
Franklin, TN 37064
http://www.crimsonenergy.com/Products/Tricks.html

Electricity
Middle Tennessee Electric Membership Corp
Phone: (615) 394-3561
Fax: (615) 394-3562
P.O. Box 681109
Nashville, TN 37268
http://www.memco.com
Foot: (615) 794-1102

Cable Television / ISP
Comcast
Nashville, TN 37228
http://www.comcast.com

Telephone
313 Commerce St.
Nashville, TN 37201
500 Liberty Ave
Nashville, TN 37243
(615) 214-1324



Design Services
For The Built
Environment

- Atlanta
 - Birmingham
 - Charlotte
 - Cincinnati
 - Columbus
 - Dallas
 - Fort Lauderdale
 - Jacksonville
 - Knoxville
 - Louisville
 - Nashville
 - Memphis
 - Richmond
 - Tampa
- GRESHAM
SMITH AND
PARTNERS
- 1400 BRYANTON CITY CENTER
NASHVILLE, TENNESSEE 37203
TEL: 615.262.3700 FAX: 615.262.3710
WWW.GSPART.COM

COF#4670

Site Construction Plans for
**Five Mile Creek
Water Line
Connection**

Franklin, Williamson County, Tennessee

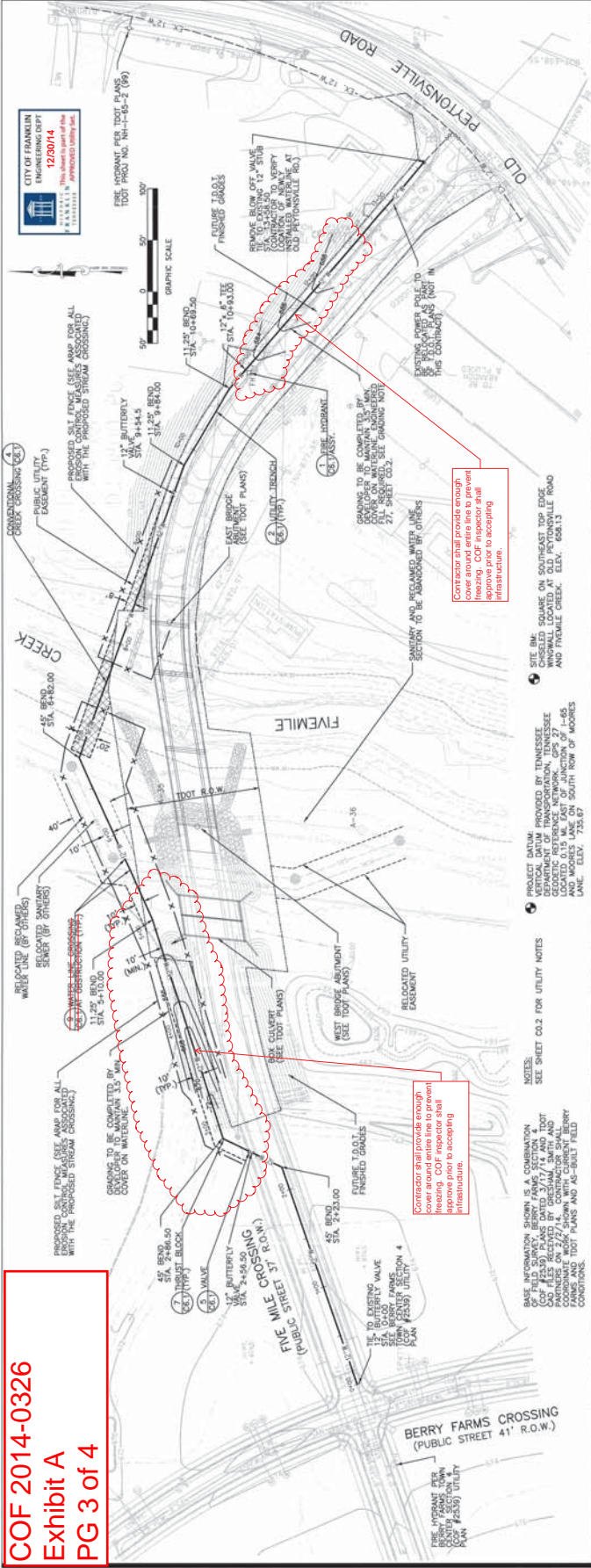


REVISION	No.	Date	Description
	1	11.06.14	ISSUE FOR PERMITS
	2	12.10.14	ISSUE FOR PERMITS

**WATER LINE PLAN
AND PROFILE**

C4.1

PROJECT: FIVE MILE CREEK
DATE:

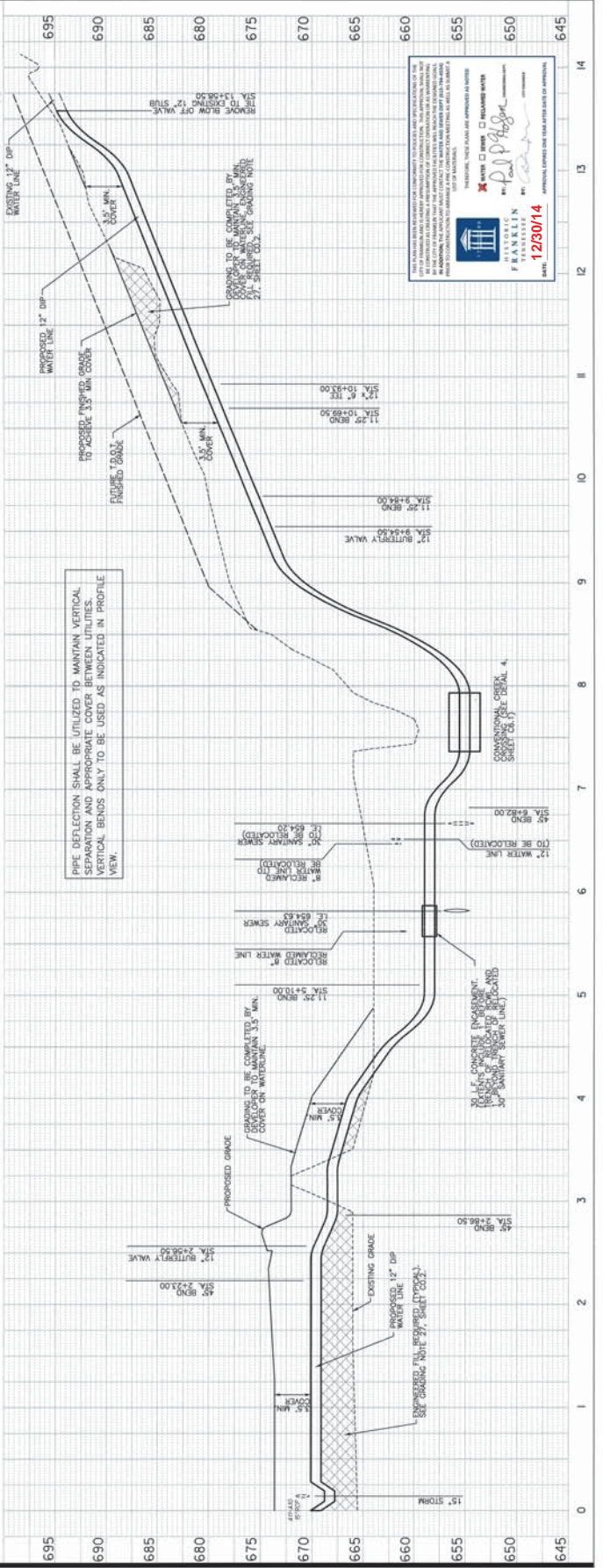


COF 2014-0326
Exhibit A
PG 3 of 4

CONTRACTOR SHALL PROTECT EXISTING UTILITIES TO REMAIN AND MAINTAIN PROPER SEPARATION PRIOR TO ACCEPTING FINAL INFRASTRUCTURE.

CONTRACTOR SHALL PROTECT EXISTING UTILITIES TO REMAIN AND MAINTAIN PROPER SEPARATION PRIOR TO ACCEPTING FINAL INFRASTRUCTURE.

- NOTE: SEE SHEET CO-2 FOR UTILITY NOTES
- PROPOSED WATER LINE VERTICAL ALIGNMENT PROVIDED BY TENNESSEE DEPARTMENT OF TRANSPORTATION, TENNESSEE DIVISION OF HIGHWAYS, PROJECT 472700, WORK ITEM 0015, M. EAST OF JUNCTION OF I-45 AND I-75, SOUTH ROW OF MOORES LANE, ELEV. 726.07
- CONTRACTOR SHALL MAINTAIN PROPER SEPARATION AND APPROPRIATE COVER BETWEEN WATER LINE AND RELOCATED SANITARY AND RECLAIMED WATER LINE SECTION TO BE ABANDONED BY OTHERS.
- CONTRACTOR SHALL MAINTAIN PROPER SEPARATION AND APPROPRIATE COVER BETWEEN WATER LINE AND RELOCATED SANITARY AND RECLAIMED WATER LINE SECTION TO BE ABANDONED BY OTHERS.



PIPE DEFLECTION SHALL BE UTILIZED TO MAINTAIN VERTICAL SEPARATION AND APPROPRIATE COVER BETWEEN UTILITIES. VERTICAL BENDS ONLY TO BE USED AS INDICATED IN PROFILE VIEW.

12/30/14

15' STOPS

695	690	685	680	675	670	665	660	655	650	645				
0	1	2	3	4	5	6	7	8	9	10	11	12	13	14

PROPOSED TO BE COMPLETED BY CONTRACTOR WITHIN 30 DAYS OF COMMENCEMENT OF WORK. CONTRACTOR SHALL MAINTAIN PROPER SEPARATION AND APPROPRIATE COVER BETWEEN UTILITIES. VERTICAL BENDS ONLY TO BE USED AS INDICATED IN PROFILE VIEW.

COF 2014-0326
Exhibit A
PG 4 of 4



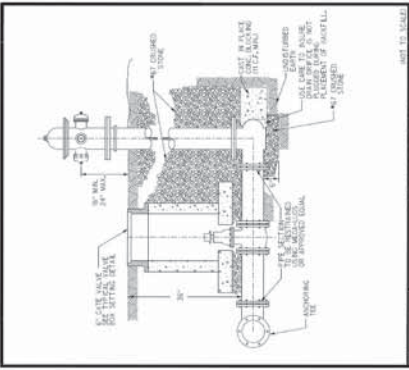
Design Services
For The Built
Environment

- Atlanta
- Birmingham
- Charlotte
- Cincinnati
- Columbus
- Dallas
- Fort Lauderdale
- Jacksonville
- Knoxville
- Louisville
- Nashville
- Memphis
- Richmond
- Tampa

GRESHAM
SMITH AND
PARTNERS

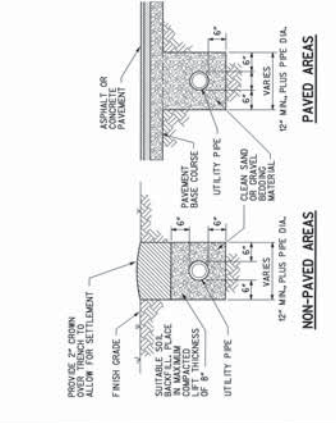
1800 ROCKWELL CITY CENTER
NASHVILLE, TENNESSEE 37219
WWW.GSAP.COM

COF# 4878



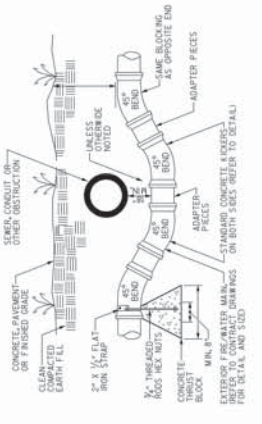
STANDARD DETAIL
WATER MANAGEMENT DEPARTMENT
CITY OF FRANKLIN, TENNESSEE
FIRE HYDRANT SETTING
REV. 03.2016

1



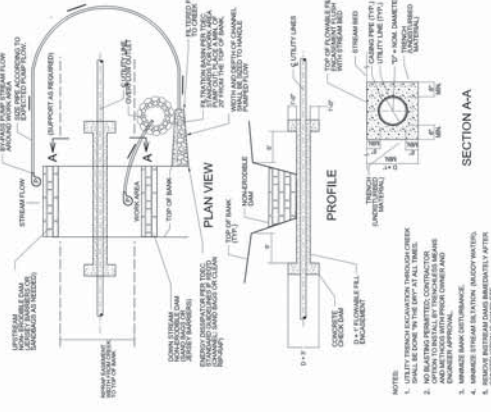
TYPICAL UTILITY LINE
TRENCH SECTION
NOT TO SCALE

2



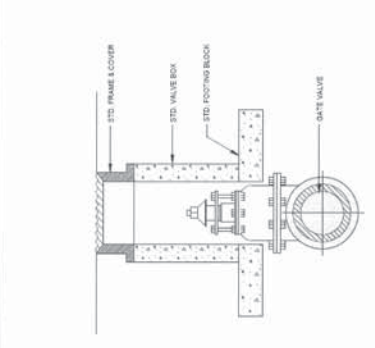
WATER LINE CROSSING
UNDER OBSTRUCTIONS
NOT TO SCALE

3



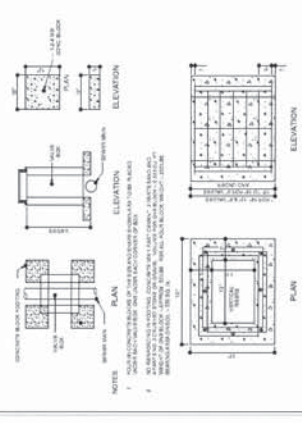
CONVENTIONAL CREEK
CROSSING DETAIL
NOT TO SCALE

4



TYPICAL VALVE BOX SETTING
N.T.S.

5



STANDARD CONCRETE VALVE BOX
NOT TO SCALE

JULY 1998

2016

6

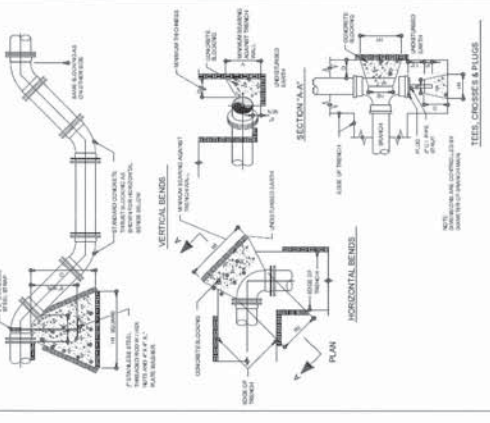
TABLE OF DIMENSIONS FOR CONCRETE BLOCKING				
SIZE & CORNER	30" BELLS	48" BELLS	24" BELLS	1 1/2" BELLS
4" x 6" x 16"	1	1	1	1
6" x 6" x 16"	1	1	1	1
8" x 6" x 16"	1	1	1	1
10" x 6" x 16"	1	1	1	1
12" x 6" x 16"	1	1	1	1
14" x 6" x 16"	1	1	1	1
16" x 6" x 16"	1	1	1	1
18" x 6" x 16"	1	1	1	1
20" x 6" x 16"	1	1	1	1
22" x 6" x 16"	1	1	1	1
24" x 6" x 16"	1	1	1	1
26" x 6" x 16"	1	1	1	1
28" x 6" x 16"	1	1	1	1
30" x 6" x 16"	1	1	1	1
32" x 6" x 16"	1	1	1	1
34" x 6" x 16"	1	1	1	1
36" x 6" x 16"	1	1	1	1
38" x 6" x 16"	1	1	1	1
40" x 6" x 16"	1	1	1	1
42" x 6" x 16"	1	1	1	1
44" x 6" x 16"	1	1	1	1
46" x 6" x 16"	1	1	1	1
48" x 6" x 16"	1	1	1	1
50" x 6" x 16"	1	1	1	1
52" x 6" x 16"	1	1	1	1
54" x 6" x 16"	1	1	1	1
56" x 6" x 16"	1	1	1	1
58" x 6" x 16"	1	1	1	1
60" x 6" x 16"	1	1	1	1
62" x 6" x 16"	1	1	1	1
64" x 6" x 16"	1	1	1	1
66" x 6" x 16"	1	1	1	1
68" x 6" x 16"	1	1	1	1
70" x 6" x 16"	1	1	1	1
72" x 6" x 16"	1	1	1	1
74" x 6" x 16"	1	1	1	1
76" x 6" x 16"	1	1	1	1
78" x 6" x 16"	1	1	1	1
80" x 6" x 16"	1	1	1	1
82" x 6" x 16"	1	1	1	1
84" x 6" x 16"	1	1	1	1
86" x 6" x 16"	1	1	1	1
88" x 6" x 16"	1	1	1	1
90" x 6" x 16"	1	1	1	1
92" x 6" x 16"	1	1	1	1
94" x 6" x 16"	1	1	1	1
96" x 6" x 16"	1	1	1	1
98" x 6" x 16"	1	1	1	1
100" x 6" x 16"	1	1	1	1

CONCRETE THRUST BLOCKING

- 1. THIS TABLE IS BASED ON AN INTERNAL HYDROSTATIC PRESSURE OF 200 PSI AND AN AVAILABLE SOIL BEARING CAPACITY OF 10,000 PSF. BOTH OF THESE PARAMETERS MUST BE ENLARGED ACCORDING TO EITHER OR BOTH OF THESE PARAMETERS TO ACCOMMODATE CALCULATIONS TO SUPPORT THE ENLARGED SIZE THRUST BLOCK PROPOSED.
- 2. BELLS SHALL BE HOLE IN THE CONCRETE FOR THE PIPES TO BE SUPPORTED.
- 3. CONCRETE FOR THE THRUST BLOCKS SHALL BE AT LEAST 28 DAYS OLD.
- 4. ALL BELL, TEEL, CROSSER, AND LUGS SHALL HAVE CONCRETE THRUST BLOCING UNDER THEM AND STANDARD THROUST BLOCING SHALL BE USED AS DIRECTED BY THE A.E.

OCT. 2000

2016



CONCRETE THRUST
BLOCKING
FOR DIMENSIONS SEE 218

OCT. 2000

2016



CITY OF FRANKLIN
ENGINEERING DEPT
12/30/14
PROJECT: 201401001-011-016
DATE: 08.04.14

SITE
DETAILS

C6.1

PROJECT: 201401001-011-016
DATE: 08.04.14

Site Construction Plans for
Five Mile Creek
Water Line

Franklin, Williamson County, Tennessee

