



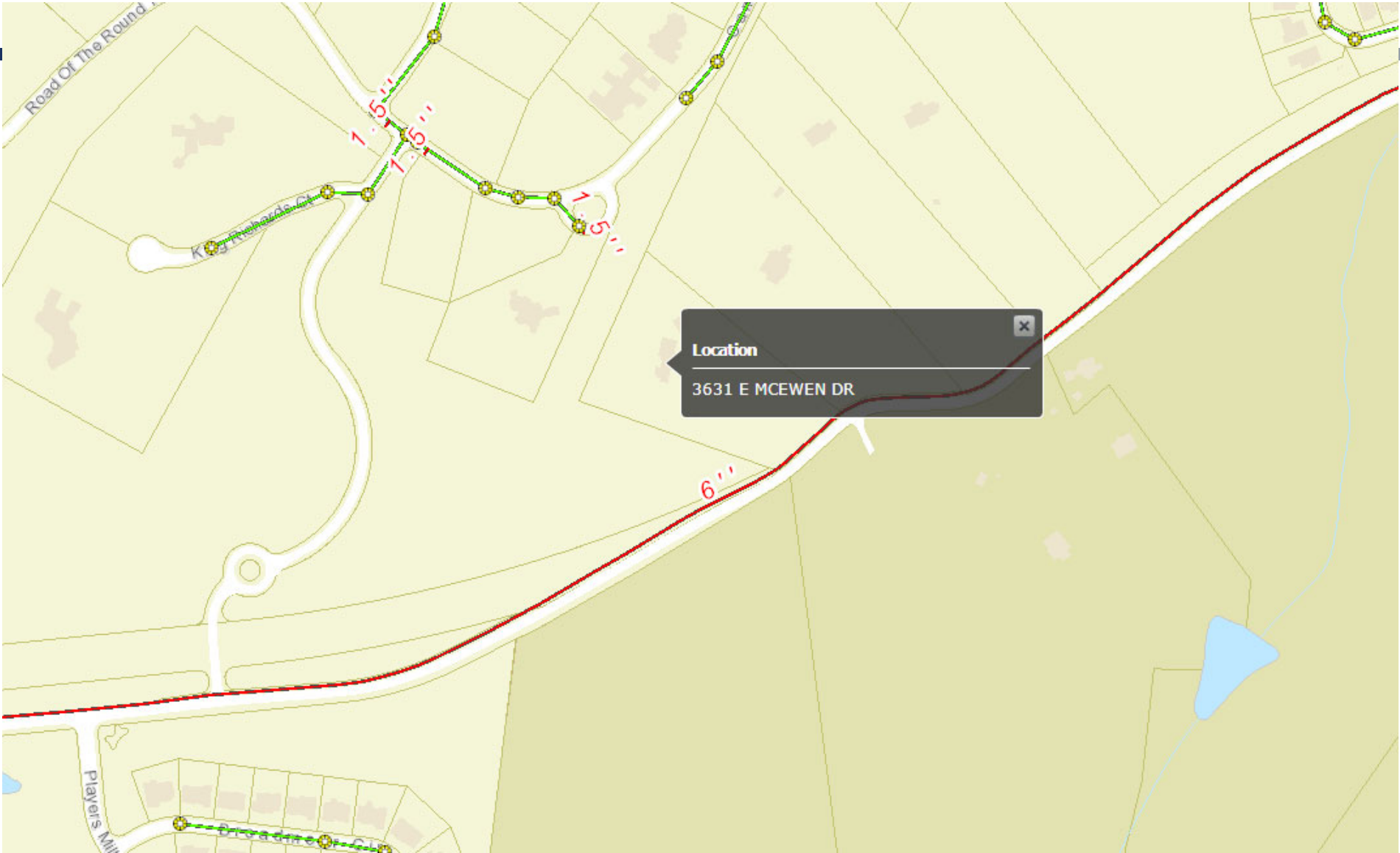
**AVAILABILITY REQUEST –
3631 EAST MCEWEN DR**

OCTOBER 8, 2019

**MICHELLE HATCHER, PE,
DIRECTOR WATER
MANAGEMENT**

DISCUSSION OUTLINE

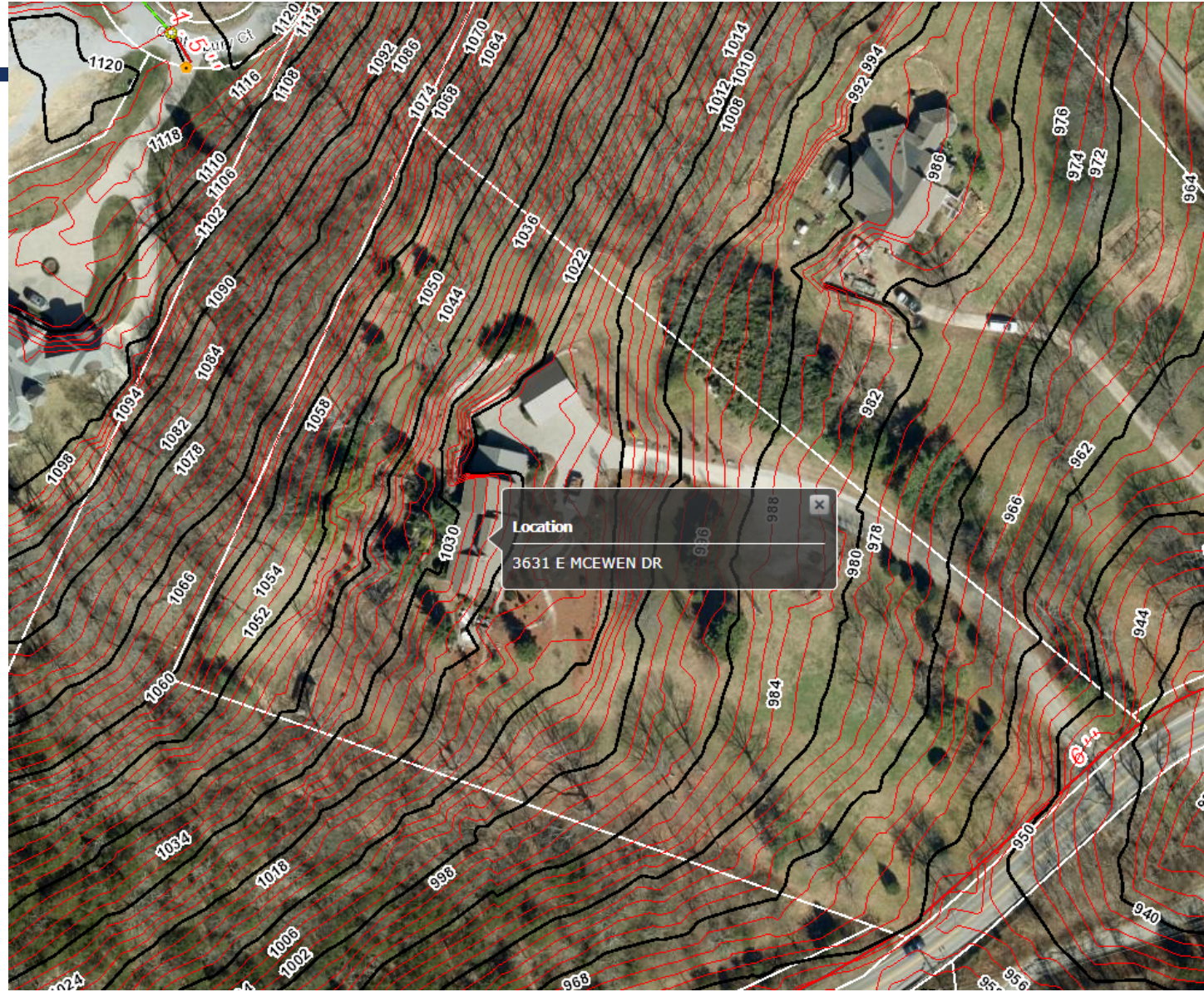
- Overview of properties (four East McEwen Drive houses)
- Legislative history
- Construction/installation impacts
- Discussion



LEGISLATIVE HISTORY

- Sewer availability request received July 29, 2019
 - Original request asking for denial
- Capital Investment Committee – August 22, 2019 (referred to Worksession)
 - Committee indicated annexed property required approval and further research needed

CONSTRUCTION & INSTALLATION ISSUES

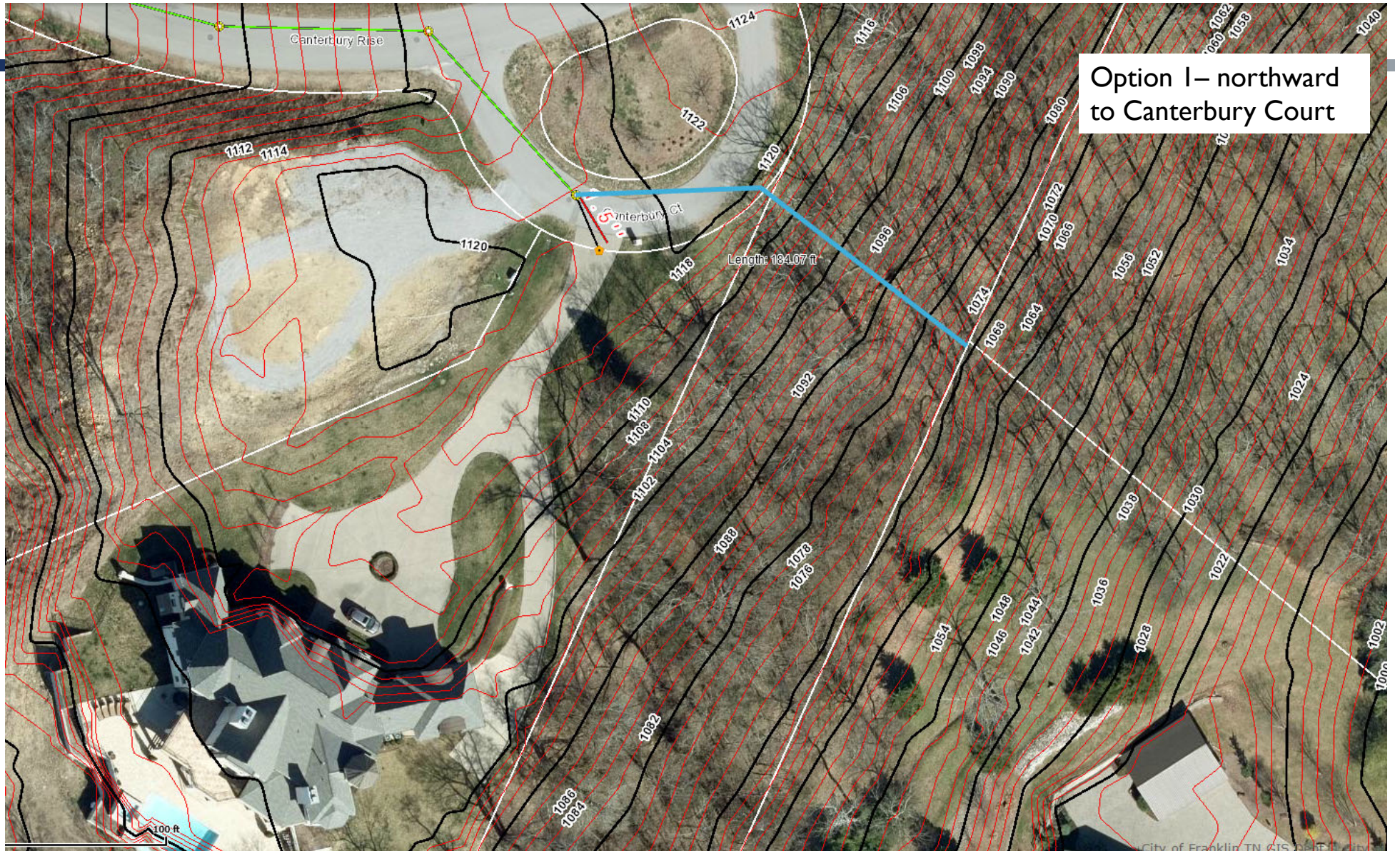


CONSTRUCTION / INSTALLATION ISSUES

- Two options:
 - Connection northward into Canterbury Court (Avalon subdivision)
 - Low pressure system uphill (approximately 200 ft to property line) at a 45% slope
 - Anticipate large amounts of rock, uneven terrain, safety concerns
 - Easement needed at 416 Canterbury Court & Avalon HOA
 - Connection southward into East McEwen Drive
 - Gravity flow cannot combine into a pressurized main, redesign of East McEwen plans to incorporate gravity main
 - Tie into McKay's Mill subdivision (approximately 2,000 LF)
 - Easement needed between 1244 and 1242 Broadmoor Circle



DISCUSSION



Option I - northward to Canterbury Court

100 ft

Option 2 – southward
to East McEwen Drive

