

**RESOLUTION 2016-40  
ORDINANCE 2016-27**

**TO BE ENTITLED, “A RESOLUTION AND ORDINANCE TO ANNEX PROPERTY, CONSISTING OF 204.081 ACRES, PROPERTY LOCATED SOUTH OF MURFREESBORO ROAD AND NORTH OF SOUTH CAROTHERS ROAD AND ADJOINING THE CITY LIMITS WITHIN THE EAST PART OF THE FRANKLIN URBAN GROWTH BOUNDARY (UGB).”**

**WHEREAS**, Glenn Adams, Rob Adams, James E. Adams Jr, George Durnin, Patti Sue Watkins, Ralph H. Peden Jr, (“Owner(s)”) of properties located as described below (“Property”) petitioned the Board of Mayor and Aldermen (BOMA) of the City of Franklin, Tennessee (“City”), to annex 204.081 acres adjoining the City limits and located within the Franklin Urban Growth Boundary (UGB); and

**WHEREAS**, the Franklin Municipal Planning Commission (FMPC) has reviewed and recommended approval of the proposed annexation and Plan of Services for the annexation area; and

**WHEREAS**, a public hearing was held following public notice as required by *Tennessee Code Annotated* Title 6, Chapter 51, as amended; and

**WHEREAS**, the BOMA has adopted a Plan of Services for the annexation area as described in Resolution 2016-41; and

**WHEREAS**, the BOMA has determined that it is in the best interest of its existing residents to annex the Property described herein and that failure to annex said property will inhibit the prosperity of the City and endanger the health, safety and welfare of its inhabitants.

**NOW THEREFORE BE IT RESOLVED AND ORDAINED BY THE BOARD OF MAYOR AND ALDERMEN OF THE CITY OF FRANKLIN, TENNESSEE, AS FOLLOWS:**

**SECTION I.** That the following described Property shall be, and is hereby, annexed in and to the corporate limits of the City of Franklin, Tennessee:

**PREMISES CONSIDERED**

Map-Parcel	Acres
079M---B02800 079M---B02900	2.7
089---05500 089---04304 089---04303 089---04302	201.381
Total	204.081

**Legal Description**

Land lying in the Fourteenth Civil District of Williamson County, being lots 127 and 128 on the Final Plat for Section 1 of Franklin East, of record in Plat Book 6, Page 91, Register’s Office of Williamson County, Tennessee, and containing 2.7 acres more or less.

## Legal Description

The following legal description is for land in the Fourteenth Civil District of Williamson County, located on the lands of James E. Adams, Jr., of record in Deed Book 2008, Page 702, R.O.W.C., TN, Ralph H Peden, Jr., of record in Deed Book 4590, Page 436, R.O.W.C., TN, Patti Sue Watkins, of record in Deed Book 6074, Page 249, R.O.W.C., TN, and George V. Durnin, of record in Deed Book 1607, Page 1006, R.O.W.C., TN, and more particularly described in as follow:

Beginning at a Point in the north margin of South Carothers Road, approximately 1600 feet southeast of the intersection of Falcon Creek Drive and said South Carothers Road;

Thence, leaving the north margin of said South Carothers Road, North 06 Degrees 20 Minutes 18 Seconds East, a distance of 716.81 feet to a point;

Thence South 82 Degrees 56 Minutes 59 Seconds East, a distance of 753.05 feet to a point;

Thence North 15 Degrees 32 Minutes 59 Seconds East, a distance of 2,025.58 feet to a point;

Thence North 06 Degrees 33 Minutes 34 Seconds East, a distance of 861.42 feet to a point;

Thence South 89 Degrees 39 Minutes 10 Seconds East, a distance of 319.84 feet to a point;

Thence South 02 Degrees 23 Minutes 32 Seconds West, a distance of 149.73 feet to a point;

Thence North 75 Degrees 48 Minutes 17 Seconds East, a distance of 768.48 feet to a point;

Thence North 09 Degrees 39 Minutes 11 Seconds West, a distance of 117.87 feet to a point;

Thence North 29 Degrees 14 Minutes 05 Seconds East, a distance of 293.60 feet to a point;

Thence North 20 Degrees 05 Minutes 58 Seconds East, a distance of 210.10 feet to a point;

Thence South 62 Degrees 38 Minutes 15 Seconds East, a distance of 48.00 feet to a point;

Thence South 69 Degrees 38 Minutes 11 Seconds East, a distance of 509.70 feet to a point;

Thence South 76 Degrees 09 Minutes 25 Seconds East, a distance of 277.18 feet to a point;

Thence South 26 Degrees 11 Minutes 34 Seconds West, a distance of 520.34 feet to a point;

Thence South 59 Degrees 49 Minutes 41 Seconds East, a distance of 862.61 feet to a point;

Thence South 26 Degrees 16 Minutes 06 Seconds West, a distance of 444.04 feet to a point;

Thence North 70 Degrees 59 Minutes 36 Seconds West, a distance of 28.01 feet to a point;

Thence South 06 Degrees 10 Minutes 51 Seconds West, a distance of 403.96 feet to a point;

Thence South 20 Degrees 12 Minutes 18 Seconds West, a distance of 14.56 feet to a point;

Thence North 78 Degrees 25 Minutes 28 Seconds West, a distance of 356.81 feet to a point;

Thence North 09 Degrees 56 Minutes 19 Seconds East, a distance of 100.04 feet to a point;

Thence North 78 Degrees 25 Minutes 28 Seconds West, a distance of 110.05 feet to a point;

Thence North 09 Degrees 56 Minutes 27 Seconds East, a distance of 25.01 feet to a point;

Thence North 78 Degrees 25 Minutes 30 Seconds West, a distance of 125.05 feet to a point;

Thence South 09 Degrees 56 Minutes 17 Seconds West, a distance of 125.05 feet to a point;

Thence North 78 Degrees 25 Minutes 29 Seconds West, a distance of 734.65 feet to a point;

Thence South 12 Degrees 44 Minutes 58 Seconds West, a distance of 784.89 feet to a point;

Thence South 79 Degrees 24 Minutes 14 Seconds East, a distance of 830.08 feet to a point;

Thence North 62 Degrees 28 Minutes 37 Seconds East, a distance of 119.56 feet to a point;

Thence South 00 Degrees 37 Minutes 45 Seconds West, a distance of 1,031.05 feet to a point;

Thence South 76 Degrees 31 Minutes 22 Seconds East, a distance of 81.00 feet to a point;

Thence South 09 Degrees 52 Minutes 41 Seconds West, a distance of 206.49 feet to a point;

Thence South 57 Degrees 04 Minutes 46 Seconds West, a distance of 151.05 feet to a point;

Thence South 49 Degrees 16 Minutes 17 Seconds West, a distance of 170.39 feet to a point;

Thence South 41 Degrees 39 Minutes 12 Seconds West, a distance of 123.05 feet to a point;

Thence North 83 Degrees 17 Minutes 12 Seconds West, a distance of 441.91 feet to a point;

Thence North 75 Degrees 19 Minutes 30 Seconds West, a distance of 540.96 feet to a point;

Thence South 15 Degrees 23 Minutes 08 Seconds West, a distance of 951.14 feet to a point;

Thence North 82 Degrees 39 Minutes 38 Seconds West, a distance of 60.79 feet to a point;

Thence South 28 Degrees 07 Minutes 56 Seconds West, a distance of 646.53 feet to a point;

Thence North 75 Degrees 15 Minutes 25 Seconds West, a distance of 215.00 feet to a point;

Thence North 05 Degrees 42 Minutes 26 Seconds East, a distance of 1,148.85 feet to a point;  
Thence North 83 Degrees 26 Minutes 21 Seconds West, a distance of 1,067.76 feet to a point, said point being in the north margin of said South Carothers Road;  
Thence, with the north margin of said South Carothers Road, North 71 Degrees 12 Minutes 56 Seconds West, a distance of 97.37 feet to a point;  
Thence North 81 Degrees 09 Minutes 29 Seconds West, a distance of 74.53 feet to the point of beginning, and containing 8,772,174.99 square feet or 201.381 acres.

**SECTION II:** That the attached Location Map shall serve the purpose of further delimiting the geographical boundaries as described by this Resolution and Ordinance.

**SECTION III:** That the annexed Property shall become part of Aldermanic Ward 1.

**SECTION IV.** BE IT FINALLY RESOLVED AND ORDAINED by the Board of Mayor and Aldermen of the City of Franklin, Tennessee, that this Resolution and Ordinance shall take effect from and after its passage on third and final reading, the health, safety, and welfare of the citizens requiring it.

**ATTEST:**

**CITY OF FRANKLIN, TENNESSEE:**

By: \_\_\_\_\_  
**Eric Stuckey**  
City Administrator/Recorder

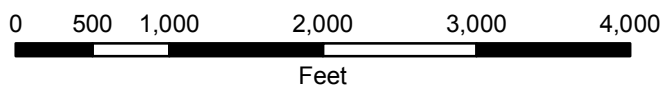
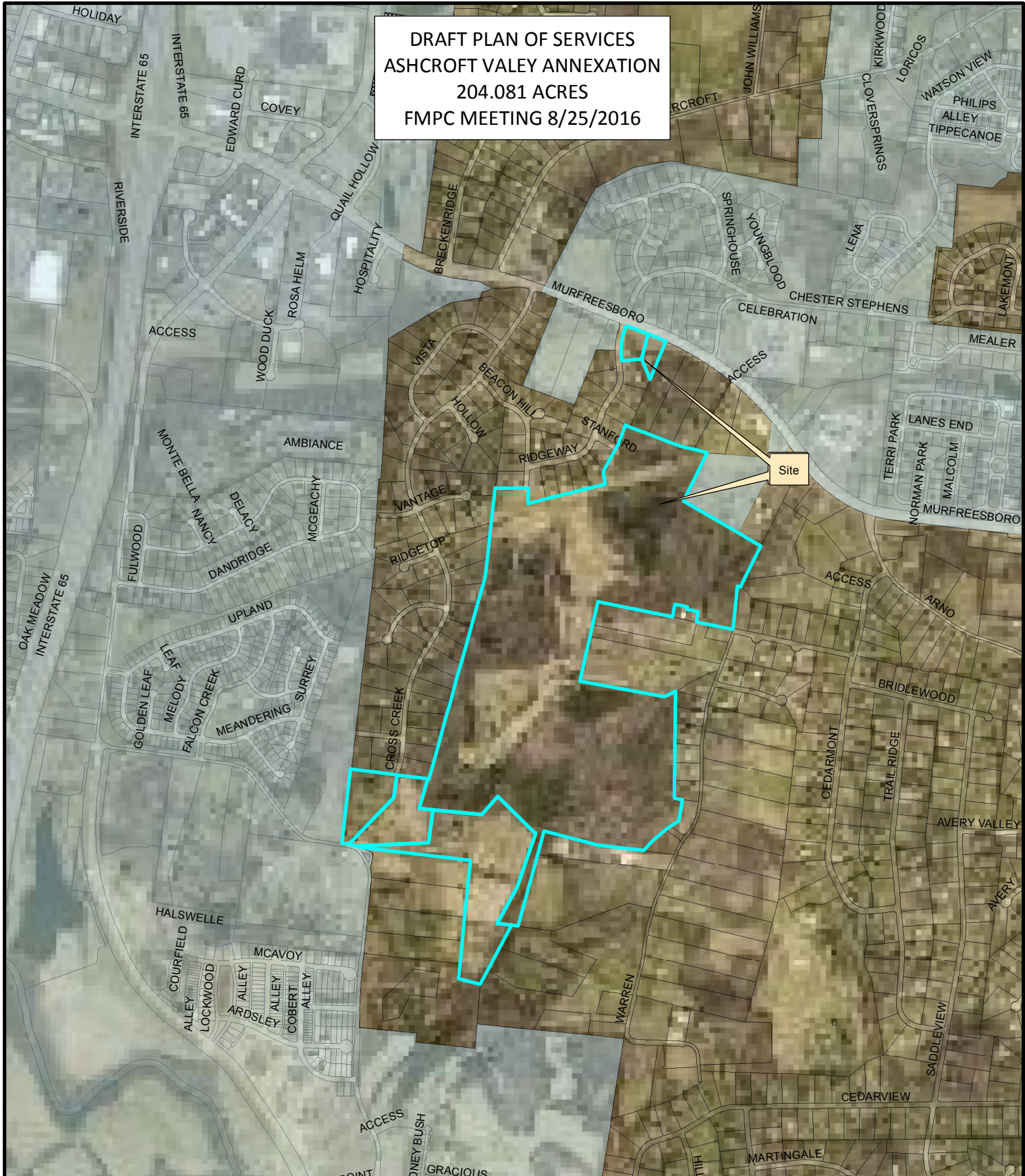
By: \_\_\_\_\_  
**Dr. Ken Moore**  
Mayor



Approved as to form by:

\_\_\_\_\_  
Shauna R. Billingsley  
City Attorney

PLANNING COMMISSION RECOMMENDED: \_\_\_\_\_  
PASSED FIRST READING: \_\_\_\_\_  
PUBLIC HEARING HELD: \_\_\_\_\_  
PASSED SECOND READING: \_\_\_\_\_  
PASSED THIRD READING: \_\_\_\_\_

DRAFT PLAN OF SERVICES  
ASHCROFT VALEY ANNEXATION  
204.081 ACRES  
FMPC MEETING 8/25/2016



- Legend**
-  Properties Under Consideration
  -  Existing City Limits



This map was created by the Franklin Planning Department. It was compiled from the most authentic information available. The City is not responsible for any errors or omissions contained herein. All data and materials (c) copyright 2016. All rights reserved.