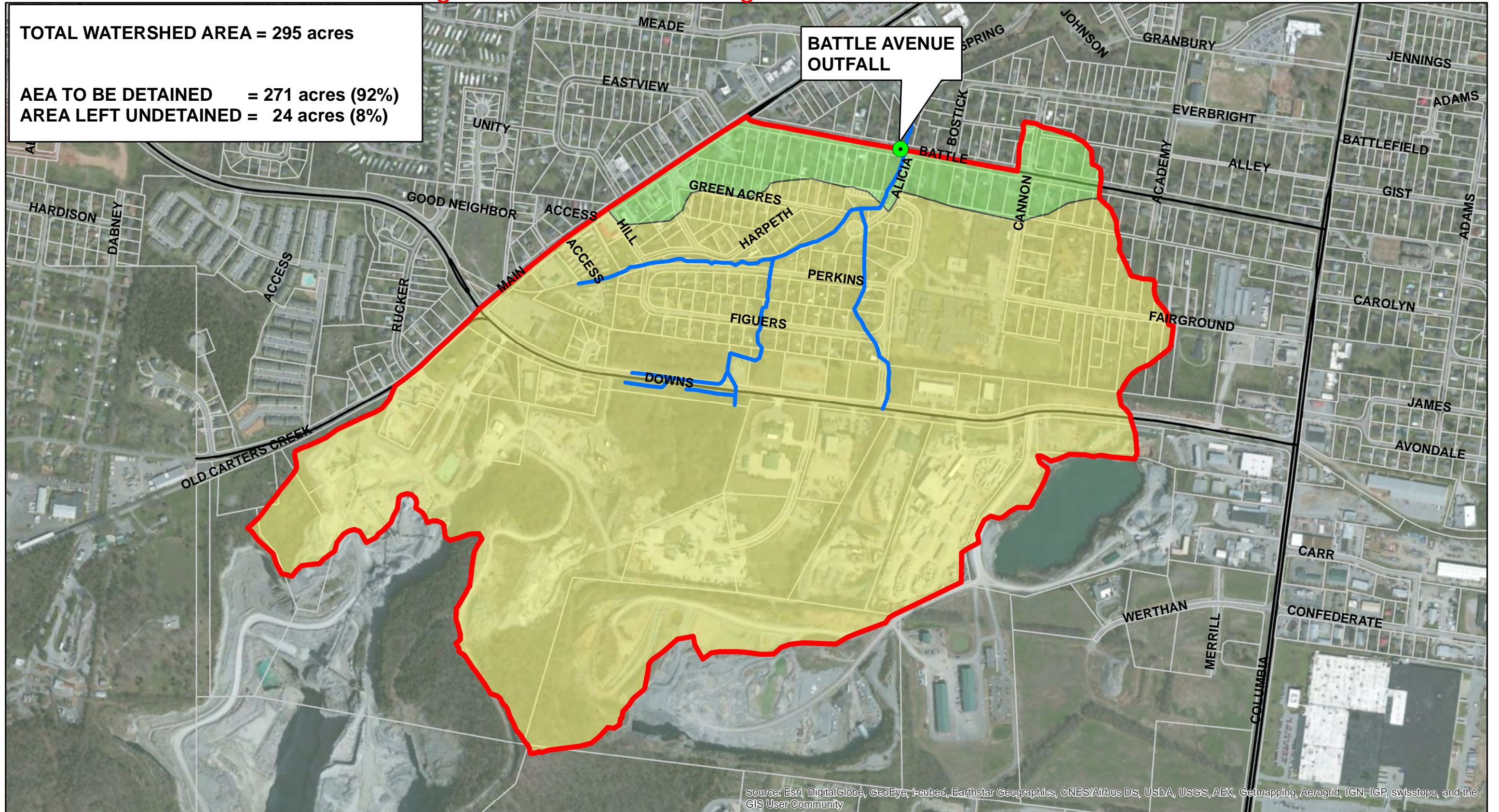


# Figuers Drive Area Drainage Discussion - EXHIBIT G

**TOTAL WATERSHED AREA = 295 acres**

**AEA TO BE DETAINED = 271 acres (92%)**

**AREA LEFT UNDETAINED = 24 acres (8%)**

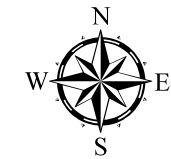


Source: Esri, DigitalGlobe, GeoEye, i-cubed, Earthstar Geographics, CNES/Airbus DS, USDA, USGS, AEX, Getmapping, Aerogrid, IGN, IGP, swisstopo, and the GIS User Community

**Legend**

- Undetained Area
- Detained Area
- Watershed Boundary
- Study Area Streams

CITY OF FRANKLIN  
400 BLOCK BATTLE AVENUE  
STORM WATER DETENTION EVALUATION



NOT TO SCALE

AREA REQUIRED TO BE  
DETAINED TO OBTAIN  
100-YEAR PROTECTION  
AT BATTLE AVENUE