



CHEEKWOOD GOLF CLUB



POPULATION GROWTH

SOMETHING
FOR
EVERYBODY



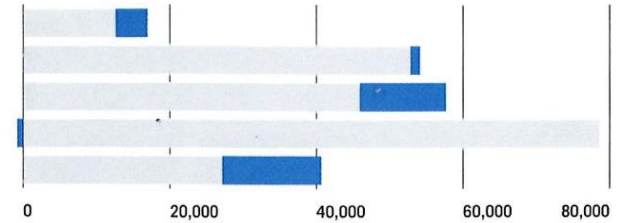
10-Year Population Projections

The chart below shows the projected Williamson County population change from 2016 through 2026. The greatest change is expected

within the senior population, which is expected to increase by 50% followed by preschoolers.

Percentage of Population Change from 2016 to 2026

Preschool (0 to 4)	34%
School Age (5 to 19)	2%
Young Adult (20 to 39)	26%
Adult (40 to 64)	-1%
Senior (65 and over)	50%



■ 2016 Population ■ 2026 Population Change Estimates

Source: EMSI 2017.1 Class of Worker

Information provided by:

williamson, INC
CHAMBER



CONNECTIVITY

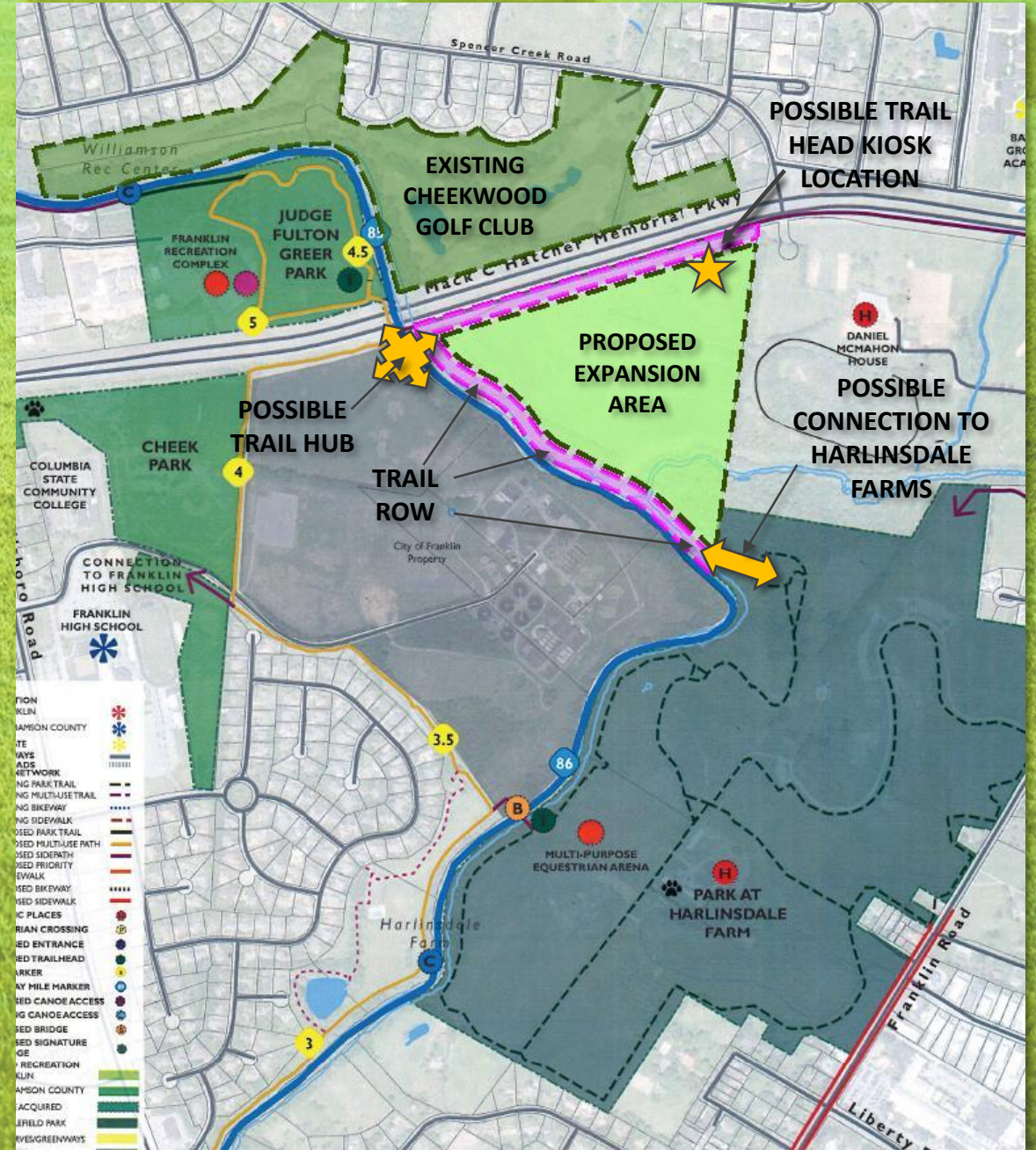
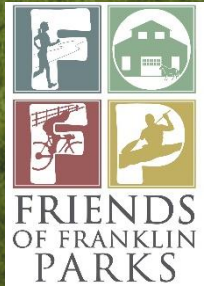
GREENWAYS



TRAIL HEAD HUB



TRAIL HEAD KIOSK



ECONOMIC IMPACT

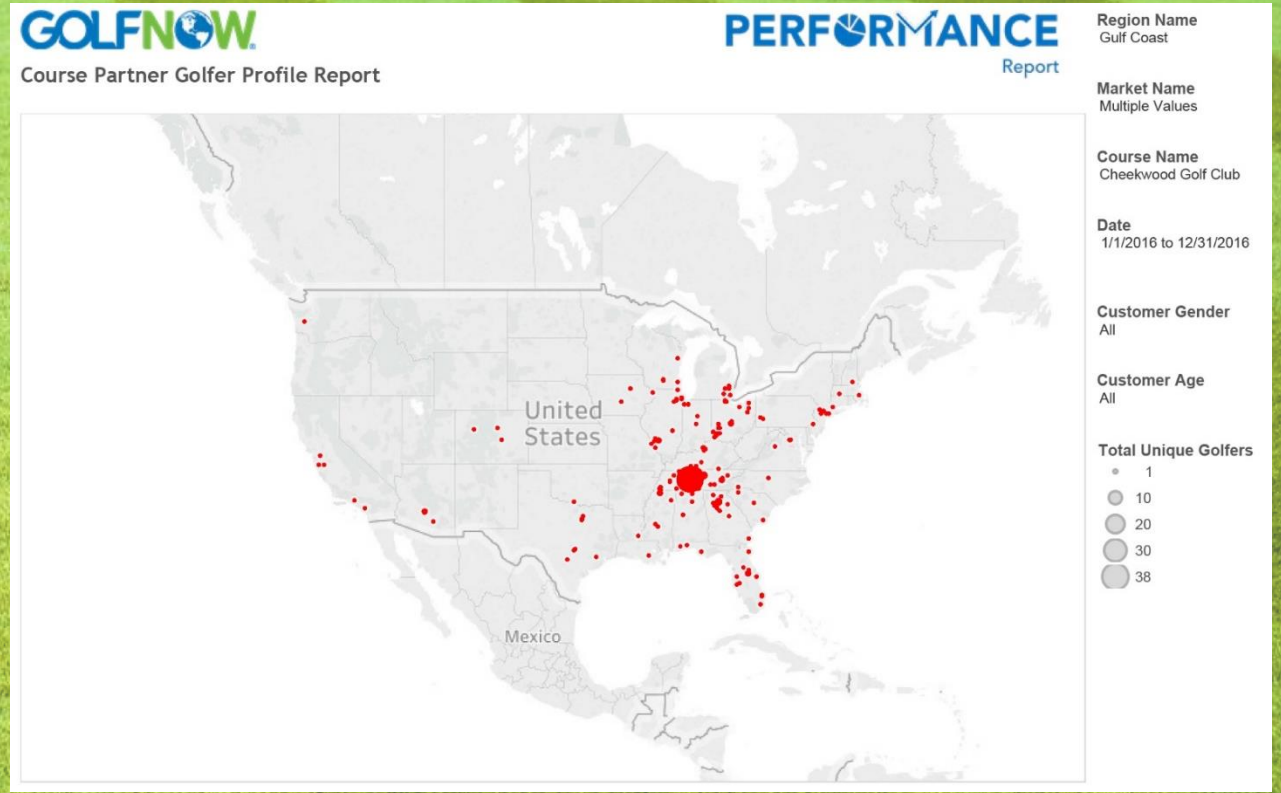
NATIONAL AND
REGIONAL
IMPACT

SPECIAL LIFETIME
EVENTS

CORPORATE
RETREATS

CELEBRITY
TOURNAMENTS

LOCAL CHARATY
EVENTS



FITNESS & WELLNESS

SUCCESSFUL AGING
WELLNESS
AGENDAS

EXERCISE
PROGRAMS

FLEXIBILITY
AND POSTURE
CURRICULUMS

YOUTH
CAMPS AND
CLINICS



ENVIRONMENTAL PARTNER



WASTEWATER

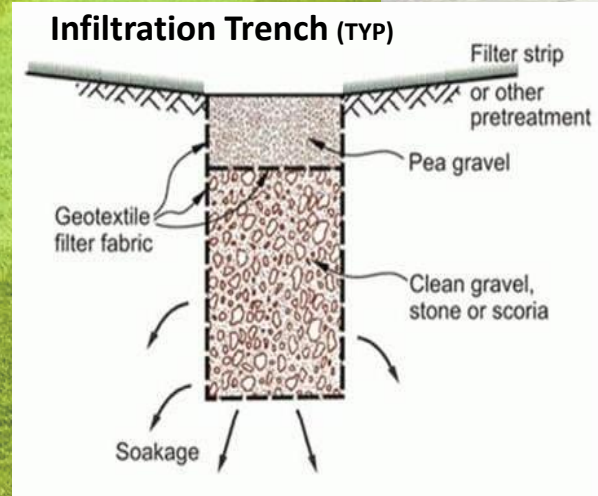


SOLID
SLUDGE



ENVIRONMENTAL PARTNER

WATER
MANAGEMENT
AREA
Proposed to
Increase by
+/-60%





CHEEKWOOD GOLF CLUB

Rooted in Franklin for 22 Years

