

City of Franklin
McEwen Interchange Landscape Enhancement
2015



McEwen Interchange



August 18, 2015

1:2,257

0 0.0175 0.035 0.07 mi

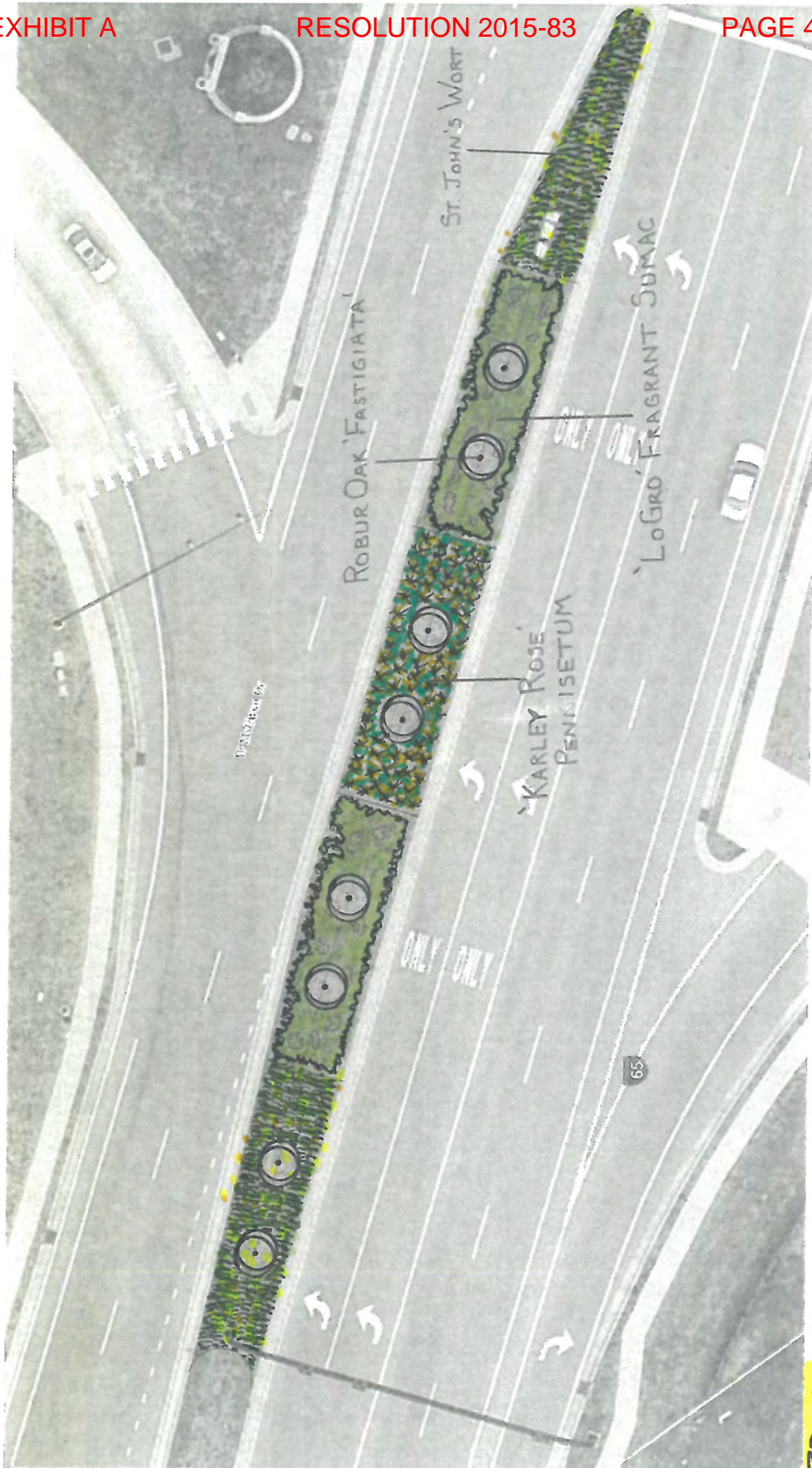
0 0.03 0.06 0.12 km

Source: Esri, DigitalGlobe, GeoEye, Earthstar Geographics, CNES/Airbus
DS, USDA, USGS, AEX, Getmapping, Aerogrid, IGN, IGP, swisstopo, and

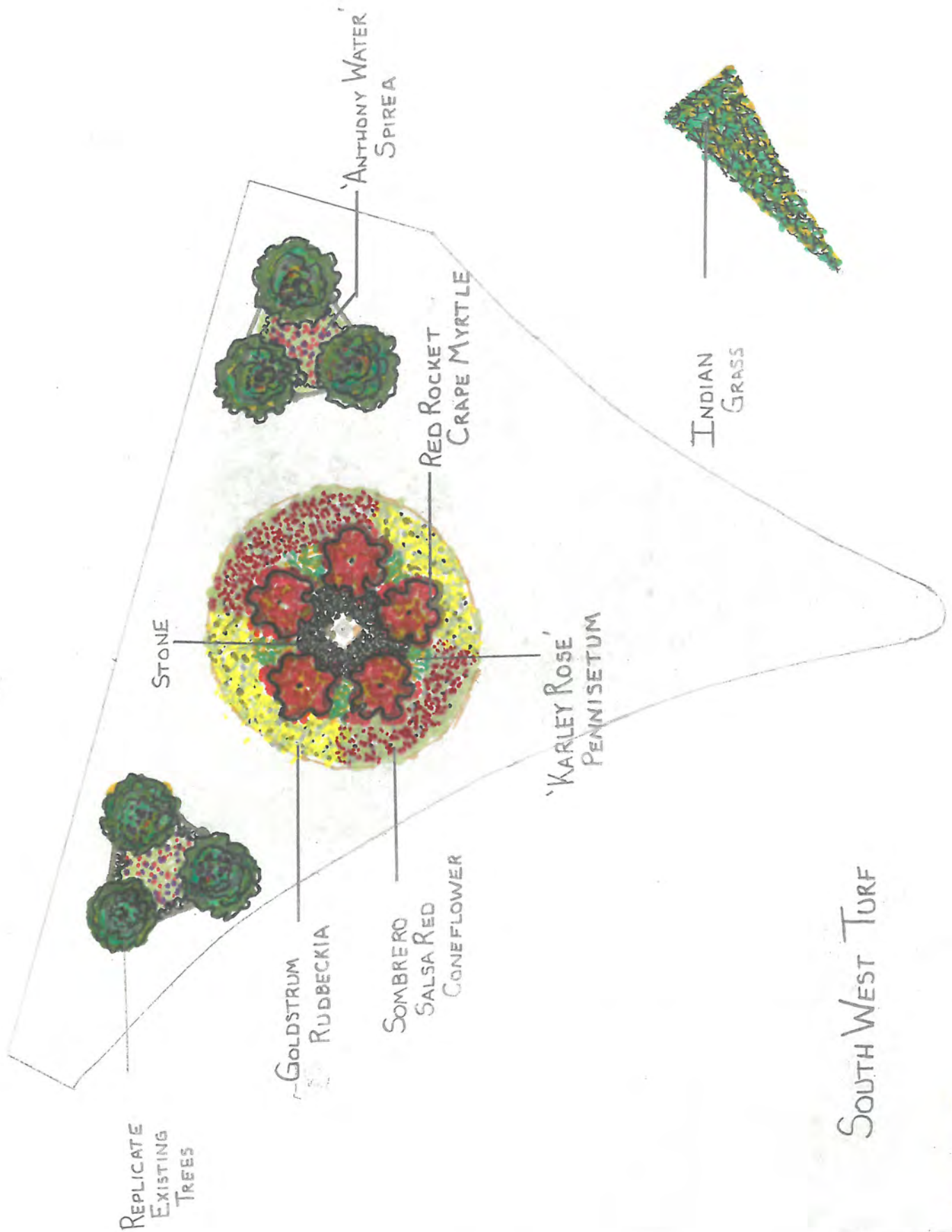


NORTH WEST TURF

20'-SCALE



WEST MEDIAN



NORTHEAST TURF

INDIAN GRASS

GOLDSTRUM
RUDBECKIA

'KARLEY ROSE'
PENNISETUM

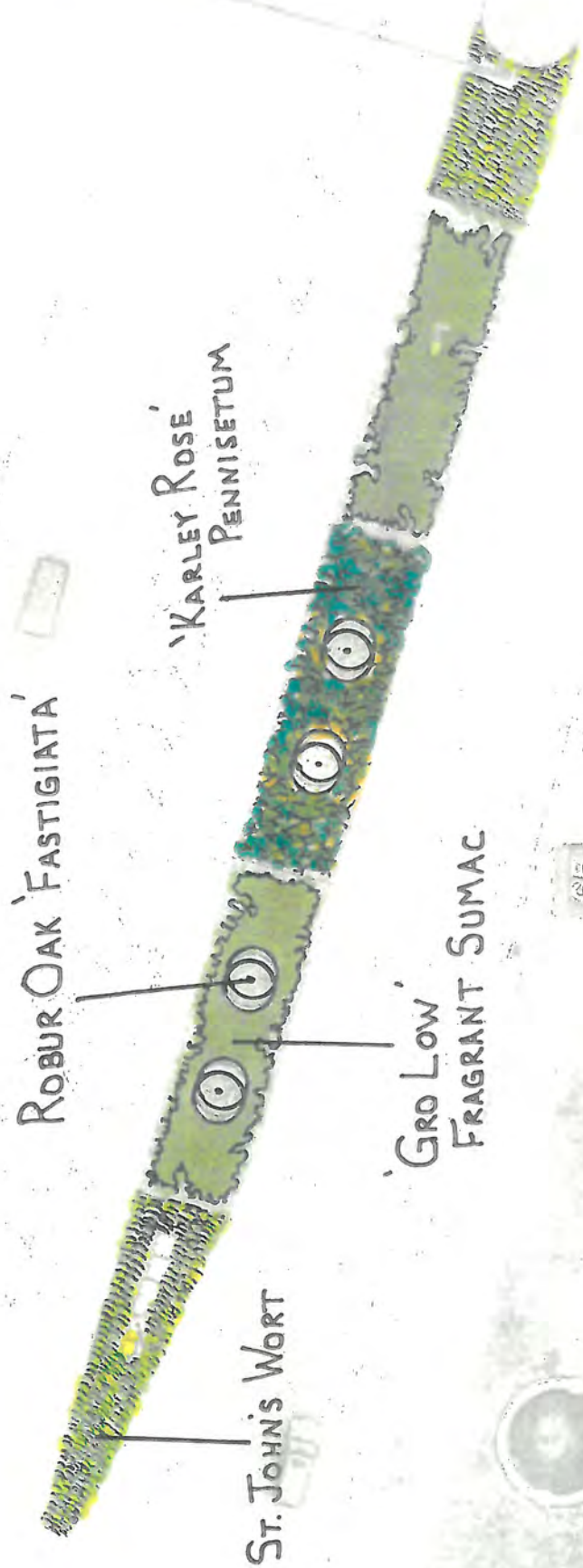
SOMBRERO
SALSA RED
CONEFLOWER

RED ROCKET
CRAPE MYRTLE

REPLICATE
EXISTING
TREES

'ANTHONY WATERER'
SPIREA

20-SCALE





SOUTH EAST TURF AREA

McEwen Interchange Plant List

NORTH WEST TURF AREA

<u>Qty.</u>	<u>Size.</u>	<u>Type</u>	<u>Total</u>
74	1 gal.	Sombrero Salsa Red Coneflower	\$ 721.50
323	1 gal.	Rudbeckia fulgida var. sullivantii 'Goldstrum'	\$ 1,695.75
14	3 gal.	Pennisetum orientale 'Karley Rose'	\$ 189.00
31	3gal.	Juniperus conferta 'Irozan' (Iron Age)	\$ 387.50
51	3gal.	Spirea x bumalda 'Anthony Waterer'	\$ 561.00
21	3gal.	Rhus aromatica 'Gro-Low'	\$ 462.00
35	3gal.	Sorghastrum nutans Indian Grass	\$ 402.50
6	1.5" cal	Replicate existing trees	\$ 600.00
3355		Spring Loaded Daffodils	\$ 1,315.00
88		Pinestraw	\$ 374.00
TOTAL			\$ 6,708.25

WEST MEDIAN

<u>Qty.</u>	<u>Size.</u>	<u>Type</u>	<u>Total</u>
94	3 gal.	Pennisetum orientale 'Karley Rose'	\$ 1,269.00
96	3gal.	Rhus aromatica 'Gro-Low'	\$ 2,112.00
8	2" cal.	Quercus robur 'fastigiata'	\$ 1,472.00
658	1 gal.	Hypericum calycinum St. John's wort	\$ 3,717.70
120		Pinestraw	\$ 520.00
TOTAL			\$ 9,090.70

SOUTH WEST TURF AREA

<u>Qty.</u>	<u>Size.</u>	<u>Type</u>	<u>Total</u>
138	1 gal.	Sombrero Salsa Red Coneflower	\$ 1,345.50
138	1 gal.	Rudbeckia fulgida var. sullivantii 'Goldstrum'	\$ 724.50
35	3 gal.	Pennisetum orientale 'Karley Rose'	\$ 472.50
18	3gal.	Spirea x bumalda 'Anthony Waterer'	\$ 198.00
21	3gal.	Sorghastrum nutans Indian Grass	\$ 241.50
5	8'	Lagerstroemia 'Red Rocket'	\$ 192.50
6	1.5" cal	Replicate existing trees	\$ 600.00
3 ton	6 in.	River stone	\$ 1,200.00
46		Pinestraw	\$ 195.50
TOTAL			\$ 5,170.00

NORTH EAST TURF AREA

<u>Qty.</u>	<u>Size.</u>	<u>Type</u>	<u>Total</u>
118	1 gal.	Sombrero Salsa Red Coneflower	\$ 1,150.50
118	1 gal.	Rudbeckia fulgida var. sullivantii 'Goldstrum'	\$ 619.50
12	3 gal.	Pennisetum orientale 'Karley Rose'	\$ 162.00
24	3gal.	Spirea x bumalda 'Anthony Waterer'	\$ 264.00
32	3gal.	Sorghastrum nutans Indian Grass	\$ 368.00
5	8'	Lagerstroemia 'Red Rocket'	\$ 192.50
2	1.5" cal.	Replicate existing trees	\$ 200.00
40		Pinestraw	\$ 170.00
TOTAL			\$ 3,126.50

WEST MEDIAN

<u>Qty.</u>	<u>Size.</u>	<u>Type</u>	<u>Total</u>
142	3 gal.	Pennisetum orientale 'Karley Rose'	\$ 1,917.00
97	3gal.	Rhus aromatica 'Gro-Low'	\$ 2,134.00
4	2" cal.	Quercus robur 'fastigiata'	\$ 736.00
387	1 gal.	Hypericum calycinum St. John's wort	\$ 2,186.55
106		Pinestraw	\$ 450.50
TOTAL			\$ 7,424.05

SOUTH EAST TURF AREA

<u>Qty.</u>	<u>Size.</u>	<u>Type</u>	<u>Total</u>
131	1 gal.	Sombrero Salsa Red Coneflower	\$ 1,277.25
234	1 gal.	Rudbeckia fulgida var. sullivantii 'Goldstrum'	\$ 1,228.50
23	3 gal.	Pennisetum orientale 'Karley Rose'	\$ 310.50
28	3gal.	Juniperus conferta 'Irozam' (Iron Age)	\$ 350.00
51	3gal.	Spirea x bumalda 'Anthony Waterer'	\$ 561.00
24	3gal.	Rhus aromatica 'Gro-Low'	\$ 528.00
44	3gal.	Sorghastrum nutans Indian Grass	\$ 506.00
6	1.5" cal	Replicate existing trees	\$ 600.00
3040		Spring Loaded Daffodils	\$ 1,315.00
94		Pinestraw	\$ 398.44
TOTAL			\$ 7,074.69

Plant Material Totals			
<u>Qty.</u>	<u>Size.</u>	<u>Type</u>	<u>Total</u>
461	1 gal.	Sombrero Salsa Red Coneflower	\$ 4,494.75
813	1 gal.	Rudbeckia fulgida var. sullivantii 'Goldstrum'	\$ 4,268.25
320	3 gal.	Pennisetum orientale 'Karley Rose'	\$ 4,320.00
59	3gal.	Juniperus conferta 'Irozam' (Iron Age)	\$ 737.50
144	3gal.	Spirea x bumalda 'Anthony Waterer'	\$ 1,584.00
238	3gal.	Rhus aromatica 'Gro-Low'	\$ 5,236.00
132	3gal.	Sorghastrum nutans Indian Grass	\$ 1,518.00
10	8'	Lagerstroemia 'Red Rocket'	\$ 385.00
12	2" cal.	Quercus robur 'fastigiata'	\$ 2,208.00
1045	1 gal.	Hypericum calycinum St. John's wort	\$ 5,904.25
6400		Spring Loaded Daffodils	\$ 2,630.00
494		Pinestraw	\$ 2,099.50
TOTAL			\$ 35,385.25

Daffodils for Naturalizing

The daffodils on these pages are selected for their vigor and naturalizing capabilities. Their hefty bulbs will produce 2 or more flowers the first spring.



"I just had to let you know how fantastic the Spring Loaded blend I bought from you three years ago is. I planted 1000 bulbs and, despite neglect, they continue to thrive and increase. What a variety of forms and colors! I have fallen in love with varieties that I thought I wouldn't like—there's not one that isn't beautiful in its own way."

—POLLY G., NORTH PLAINS, OR

Spring Loaded®

This mixture makes planting daffodils on a large scale very economical, with no compromise in bulb size. It contains at least 20 proven named varieties, covering the full spectrum of daffodil colors and bloom times. These time-tested beauties will provide a succession of flowers for many springs to come.

	early	mid	late
Item No	3078	Per 100	\$49.00
Bulb Size	18cm+	Per 1000	\$430.00
Height	12-18"	Per 5000	\$2000.00

E-Newsletter
Signup

E-Catalog



Contact Us



Hot Pics

AVAILABILITY

PLANT
SEARCH

RESOURCES

MIDWEST
SOLUTIONS®

login / email

password

First Time Logging In?

Forgot Password?

SUSTAINABLE
PRACTICESABOUT
MIDWEST

NEWS

CAREERS

[All Plants](#) :: [All Perennials](#) :: [All Echinacea 'Salsa Red'](#)

Sombrero™ Salsa Red Coneflower

Echinacea 'Salsa Red'

Sombrero™ 'Salsa Red' Echinacea

PP#23,105

Compact, well-branched, brilliant red coneflower.

Height: 18-24 in

Width: 12-18 in

Soil Conditions: Moist/Well Drained

Flower Color: Red

Bloom Time: June, July, August, September

Hardiness Zone: 5 TO 9



18-12" spacing

ITEM #	CROP IMAGE	SIZE	CURRENT AVAIL
22887.1G		#1	1519

Characteristics & Attributes

Attributes	Attracts Wildlife	Plant Habit	Light Conditions
Drought Tolerant	Attracts Butterflies	Upright	Sun
Container	Attracts Pollinators		
Fall Color			
Native Plant	Flower Color	Flower Hue	Flower Height
Community	Red	Medium	18" to 24"
Mesic Prairie			
Flower Type	Foliage Color	Leaf Texture	Prune Time
Head	Green	Medium	Jan/Feb/March
Flower Form	Flower Size	Growth Rate	Origin
Single	3" to 4"	Average	Hybrid

 PLANT
CALCULATORMidwest Groundcovers, LLC, P.O. Box 748 St. Charles, IL 60174 Phone: (847) 742-1790 | Fax: (847) 742-2655 | [click here to email us](#)
Copyright © 2005-2015 Midwest Groundcovers, LLC. | [Privacy Policy](#) | Produced by Clarity Connect, Inc ()



MISSOURI BOTANICAL GARDEN

[Visit](#) [Things To Do](#) [Learn & Discover](#) [Gardens & Gardening](#) [Sustainability](#) [Plant Conservation](#) [Plant Science](#) [About](#)
[Gardens & Gardening > Your Garden > Plant Finder](#)

Gardening Help

[Plant Finder](#)
[Lawn, Landscape & Garden Design](#)
[Edible Gardening](#)
[Advice, Tips & Resources](#)
[Plants of Merit](#)
[Sustainable Gardening](#)
[Gardening Education & Classes](#)
[Visit the Center for Home Gardening](#)
[Gardening Help Site Map](#)

Gardening Help Search

[Become a Master Gardener](#)
[Determine Your Growing Zone](#)
[Plant Finder](#)

Rudbeckia fulgida var. sullivantii 'Goldsturm'

Like Plant Finder? Help us improve and expand it!

[Donate Now!](#)
[Back to Previous Page](#)

 ★★★★★ [See Comments](#)
[More Images](#)
[Tried and Trouble-free](#)

Recommended by 12 Professionals

Common Name: black-eyed Susan

Type: Herbaceous perennial

Family: Asteraceae

Zone: 3 to 9

Height: 2.00 to 3.00 feet

Spread: 1.00 to 2.00 feet

Bloom Time: June to September

Bloom Description: Yellow rays with black center disk

Sun: Full sun

Water: Dry to medium

Maintenance: Low

Suggested Use: Naturalize, Rain Garden

Flower: Showy

Attracts: Butterflies

Tolerate: Deer, Drought, Clay Soil, Dry Soil, Air Pollution

[Garden locations](#)

18" - spacing

Culture

Easily grown in average, dry to medium, well-drained soil in full sun. Tolerates hot and humid summers and some drought. Tolerates light shade, but best in full sun. Deadhead to prolong bloom. Divide when clumps become overcrowded. Plants do not come true from seed (must be vegetatively propagated). Some nurseries sell seed-grown plants, however, as Goldsturm strain.

Noteworthy Characteristics

This coneflower cultivar is an upright, rhizomatous, clump-forming perennial which typically grows 2-3' tall. Features large, daisy-like flowers (3-4" across) with deep yellow rays and dark brownish-black center disks. Flowers appear singly on stiff, branching stems in a prolific, long-lasting, mid-summer-to-fall bloom. Oblong to lanceolate, dark green foliage. Good fresh cut flower.

Problems

A common problem of this cultivar is angular leaf spot caused by a bacterium. The disease causes brown or black angular spots on the leaves which can expand to blacken the whole leaf. Infection begins on the lower leaves and moves up the plant. Rudbeckias are also susceptible to septoria leaf spot and powdery mildew.

Garden Uses

Mass in bold drifts in the perennial border, cottage garden, prairie, meadow or naturalized area. Provides excellent bloom and color for late summer.



MISSOURI BOTANICAL GARDEN

 Search

[Visit](#) [Things To Do](#) [Learn & Discover](#) [Gardens & Gardening](#) [Sustainability](#) [Plant Conservation](#) [Plant Science](#) [About](#)
[Gardens & Gardening > Your Garden > Plant Finder](#)

Gardening Help

[Plant Finder](#)
[Lawn, Landscape & Garden Design](#)
[Edible Gardening](#)
[Advice, Tips & Resources](#)
[Plants of Merit](#)
[Sustainable Gardening](#)
[Gardening Education & Classes](#)
[Visit the Center for Home Gardening](#)
[Gardening Help Site Map](#)

Gardening Help Search

 Search

[Become a Master Gardener](#)
[Determine Your Growing Zone](#)
[Plant Finder](#)
Pennisetum orientale 'Karley Rose'

Like Plant Finder? Help us improve and expand it!

[Back to Previous Page](#)
[Donate Now!](#)


Common Name: oriental fountain grass

Type: Ornamental grass

Family: Poaceae

Zone: 5 to 8

Height: 2.00 to 3.00 feet

Spread: 2.00 to 3.00 feet

Bloom Time: June to August

Bloom Description: Rose-purple

Sun: Full sun to part shade

Water: Medium

Maintenance: Low

Flower: Showy

Leaf: Good Fall

Other: Winter Interest

Tolerate: Drought, Black Walnut, Air Pollution

[Garden locations](#)
★★★★★, [See Comments](#)
[More Images](#)
[Tried and Trouble-free](#)

Recommended by 4 Professionals

Culture

Easily grown in average, medium, well-drained soils in full sun to part shade. Best in full sun. Tolerates part shade, but may not flower in too much shade. Prefers sandy loams with good drainage. Drought tolerant. Cut foliage to the ground in late winter before new shoots appear. Species plants are only winter hardy to USDA Zone 6, however 'Karley Rose' is reportedly winter hardy to USDA Zone 5a, which encompasses the entire St. Louis metropolitan area.

Noteworthy Characteristics

Pennisetum orientale is a warm season fountain grass that is native to Asia. It is an ornamental grass that typically forms graceful, spreading foliage clumps to 18" tall and as wide of narrow, gray-green leaves (to 1/4" wide). Showy, fluffy, pinkish-white flower spikes arch upward and outward from the foliage clump in late summer like water spraying from a fountain, hence the common name. Flower spikes rise well above the foliage to 2.5-3' tall. Flower spikes persist over a very long bloom period from early June to August before eventually disintegrating. Foliage changes to yellowish-tan in fall, and usually remain attractive throughout the winter. 'Karley Rose' is a cultivar that, inter alia, is distinguished from the species by having (1) deeper green foliage, (2) darker, smoky rose-purple flower spikes that are larger and fuller, (3) longer bloom period extending into September and (4) better winter hardiness. U.S. Plant Patent #12,909 issued September 3, 2002.

Problems

No serious insect or disease problems.

30" spacing

Juniperus conferta

Shore Juniper

Cupressaceae



Habitat

- zone 5
- native to sea coast of Japan

Habit and Form

- dense, evergreen shrub
- branches very flexible
- 1' to 2' tall and 6' to 9' wide
- slow growth
- medium texture

Summer Foliage

- awl-shaped needles, held in 3's
- needles tend to overlap
- needle tip sharply pointed
- concave needles with a white band on upper-side with a green line running through the middle
- bright blue-green color

Autumn Foliage

- by cuttings

Cultivars/Varieties

'Blue Pacific' - This is the most common form, featuring blue-green foliage and a tight habit less than 1' tall and spreading wide to form a groundcover. It appears to be slightly more hardy than the species.

'Emerald Sea' - A U.S. National Arboretum introduction growing larger than 'Blue Pacific' (to 2' tall and 10' wide), this plant is hardier than the species and salt tolerant. It has a looser habit than 'Blue Pacific'.

'Trozam' (Iron Age™) - This new selection is marketed for its purported tolerance of harsh, dry conditions and salt exposure. It has a slightly more upright growth, to 12" tall and 6' wide. 52" spacing

'Silver Mist' (same as **'Shiro Toshio'**) - This new form is exceptional for its dense, silvery blue-green foliage and compact dense habit to 16" tall. The foliage develops a slight purple cast in winter.

'Sunsplash' (perhaps the same as **'Variegata'** and **'Akebono'**) - A variegated form that appears ready to enter the mainstream, this plant features bluish green foliage with random sections of gold-yellow needles. The variegation appears to persist from year to year and remains fresh in all seasons.

NC STATE UNIVERSITY



Search

Plants > All Plants > Spiraea x bumalda 'Anthony Waterer'

Spiraea x bumalda 'Anthony Waterer'

Common Name(s):

Anthony Waterer spirea

Category:

Shrubs

Height:

2-3 ft.

36" spacing

Foliage:

Alternate, simple dark green leaves; 1.5 in. long; new growth is pink-tinged; reddish fall color

Flower:

Small purplish red flowers on 4 to 6 in. flat cluster in summer

Zones:

5 to 9

Habit:

Deciduous

Site:

Sun to partial shade; tolerates range of soil types

Texture:

Medium to fine

Form:

Upright, broad, flat, compact shrub

Width:

3-4 ft.

Tags:

deciduous



Spiraea x bumalda 'Anthony Waterer'



Spiraea x bumalda 'Anthony Waterer'



NCCES plant id: 1785

Like

Tweet

8+1

WHERE NEXT?





MISSOURI BOTANICAL GARDEN

[Visit](#) [Things To Do](#) [Learn & Discover](#) [Gardens & Gardening](#) [Sustainability](#) [Plant Conservation](#) [Plant Science](#) [About](#)
[Gardens & Gardening > Your Garden > Plant Finder](#)

Gardening Help

Plant Finder

[Lawn, Landscape & Garden Design](#)
[Edible Gardening](#)
[Advice, Tips & Resources](#)
[Plants of Merit](#)
[Sustainable Gardening](#)
[Gardening Education & Classes](#)
[Visit the Center for Home Gardening](#)
[Gardening Help Site Map](#)

Gardening Help Search

[Become a Master Gardener](#)
[Determine Your Growing Zone](#)
[Plant Finder](#)

Rhus aromatica 'Gro-Low'

Like Plant Finder? Help us improve and expand it!

[Back to Previous Page](#)
[Donate Now!](#)


See Comments

[More Images](#)
[Plant of Merit](#)
[Tried and Trouble-free](#)

Recommended by 10 Professionals

Common Name: fragrant sumac

Type: Deciduous shrub

Family: Anacardiaceae

Zone: 3 to 9

Height: 1.50 to 2.00 feet

Spread: 6.00 to 8.00 feet

Bloom Time: April to May

Bloom Description: Yellowish

Sun: Full sun to part shade

Water: Dry to medium

Maintenance: Low

Suggested Use: Naturalize

Flower: Insignificant

Attracts: Birds, Butterflies

Fruit: Showy

Tolerate: Rabbit, Drought, Erosion, Clay Soil, Dry Soil, Shallow-Rocky Soil

[Garden locations](#)

48" - spacing

Culture

Easily grown in average, dry to medium, well-drained soil in full sun to part shade. Tolerant of wide range of soils except those that are poorly drained.

Noteworthy Characteristics

This fragrant sumac cultivar is a dense, low-growing, rambling shrub which spreads by root suckers and typically grows only to 1-2' tall but spreads to 8' wide. Trifoliate, medium green leaves turn attractive shades of orange and red in autumn. Leaves and twigs are aromatic when bruised (hence the species name). Leaves are smaller but resemble in appearance those of the related poison ivy (*Rhus radicans*), however this fragrant sumac is a totally non-poisonous plant. Tiny yellow flowers bloom at the twig tips in early spring before the foliage. Separate male flowers (in catkins) and female flowers (in clusters) appear on the same plant (monoecious) or, more commonly, on different plants (dioecious). Male catkins form in late summer and persist throughout the winter until eventually blooming in spring. Female flowers give way in late summer to small clusters of hairy, red berries which may persist into winter. Fruit is attractive to wildlife.

Problems

No serious insect or disease problems. Some susceptibility to leaf spot, rust, scale, aphids and mites. Nipple galls on foliage are a somewhat common, but generally cosmetic problem.

Garden Uses



MISSOURI BOTANICAL GARDEN

[Visit](#) [Things To Do](#) [Learn & Discover](#) [Gardens & Gardening](#) [Sustainability](#) [Plant Conservation](#) [Plant Science](#) [About](#)
[Gardens & Gardening > Your Garden > Plant Finder](#)

Gardening Help

Sorghastrum nutans 🔊

Like Plant Finder? Help us improve and expand it!

Plant Finder

[Lawn, Landscape & Garden Design](#)
[Edible Gardening](#)
[Advice, Tips & Resources](#)
[Plants of Merit](#)
[Sustainable Gardening](#)
[Gardening Education & Classes](#)
[Visit the Center for Home Gardening](#)
[Gardening Help Site Map](#)
[Back to Previous Page](#)
[Donate Now!](#)


Common Name: Indian grass

Type: Ornamental grass

Family: Poaceae

Native Range: Eastern and central United States

Zone: 4 to 9

Height: 3.00 to 5.00 feet

Spread: 1.00 to 2.00 feet

3/4" spacing

Bloom Time: September to February

Bloom Description: Light brown with yellow stamens

Sun: Full sun

Water: Dry to medium

Maintenance: Medium

Suggested Use: Naturalize

Flower: Good Dried

Leaf: Good Fall

Attracts: Birds

Other: Winter Interest

Tolerate: Drought, Erosion, Dry Soil, Shallow-Rocky Soil, Black Walnut, Air Pollution

[Garden locations](#)

Gardening Help Search

[Become a Master Gardener](#)
[Determine Your Growing Zone](#)
[Plant Finder](#)

Be the first to comment on this plant

Tried and Trouble-free

Recommended by 3 Professionals

Species Native to Missouri

Culture

Easily grown in average, dry to medium, well-drained soils in full sun. Tolerant of a wide range of soils including heavy clays. Does well in poor, dry, infertile soils. Tends to open up and/or flop in moist, rich soils however. May naturalize by self-seeding in optimum growing conditions. Cut back to the ground in late winter to early spring just before the new growth appears.

Noteworthy Characteristics

Sorghastrum nutans, commonly called Indian grass, is a warm season Missouri native perennial grass which typically occurs in prairies, glades and open woods throughout the State. It was one of the dominant grasses of the tallgrass prairie which once covered large parts of the Midwest. Typically grows 3-5' tall (less frequently to 6') and is noted for its upright form and blue-green foliage. It forms upright clumps (to 2-3' tall) of slender, blue-green leaves (to 1/2" wide and 2' long). Foliage turns orange-yellow in fall and usually retains hints of color into the winter. Stiff, vertical flowering stems, topped with narrow, feathery, light brown flower panicles (to 12" long) highlighted with yellow stamens, rise well above the foliage clump in late summer to 5-6' tall. Panicles darken to bronze/chestnut brown in fall as they mature, later fading to gray. Panicles continue to provide some interest well into winter.

Genus name come from Greek and means a poor imitation of sorghum.

Specific epithet means to nod or nodding. Latin for swaying, while the genus name *Sorghastrum* is of Greek origin and means "a poor imitation of sorghum".



Tree Farm and Nursery Inc.

7280 State Road 13 N St. Augustine FL 32092 Phone (904) 522-1786

[About S and J](#)[Edible Landscaping](#)[North Florida Sod](#)[New Plants](#)

Where am I? [About S and J Nursery and Tree Farm](#) > [S & J Nursery Trees](#) > [Crape Myrtle Varieties for the Jacksonville | St. Augustine Florida landscape](#) > Red Rocket Crape Myrtle

Red Rocket Crape Myrtle



Choose an image to begin

(*Lagerstroemia 'Red Rocket'*)

Crape Myrtle Red Rocket Preferred Exposure:

- Full sun is needed for Red Rocket Crape Myrtles to grow and bloom properly in the North Florida | Jacksonville | St. Augustine area landscape.

Red Rocket Crape Myrtle Foliage | Bark:

- About S and J
- Wholesale Plants
- Retail Nursery
- Installation Checklist
- Planting From Containers
- Watering Guides
- Edible Landscaping
- North Florida Sod
- New Plants
- Grasses | Grasslike Plants
- Flowering Plants
- Palms of North Florida
- Roses
- Shrubs
- Trees
- Tropical Plants
- Books
- The Garden Shop
- Plant Pictures
- Looking Good
- Site Map



- Dark green deciduous foliage of the Red Rocket Crape Myrtle turns bronze red in the fall before falling off the tree for winter.

- Bark of the Red Rocket Crape Myrtle is a beautiful tan color and smooth textured. Very pretty.

Red Rocket Crape Myrtle Soil Preference / Salt Tolerance:

- Red Rocket Crape Myrtles do well in most soils providing they are well draining.

- Crape Myrtle Trees are not known to be salt tolerant and should not be planted in coastal landscapes or gardens where irrigated with water with high salinity levels.

Red Rocket Crape Myrtle Size Variance:

- Red Rocket Crape Myrtle is a medium sized selection and will only grow up to 15-20 feet high and wide.

- Use Red Rocket Crape Myrtles where you have limited space that a larger species would not be well suited to or you would have to trim back all of the time to keep it in scale you can still allow this variety to grow to its full potential without all the fuss.

Crape Myrtle Red Rocket Growth Habit:

- Upright rounded growth habit of a Red Rocket Crape Myrtle forms a nice full canopy of foliage.

Crape Myrtle Red Rocket Growth Rate:

- Red Rocket is considered a moderate growing Crape Myrtle. Crape Myrtles growth rate is tied to its mature growth size, 30 ft tall Muskogee Crape Myrtles will grow very quickly but Catawba that has a mature height of only 12 ft is much slower growing.

Red Rocket Crape Myrtle Bloom:

- Red Rocket Crape Myrtle blooms are without question the best of the best when you're on the market for a true red color. The bright red color is a rich deep hue that is very eye catching and makes a dramatic landscape statement when in bloom. One of my personal favorite selections, very pretty.

Crape Myrtle Red Rocket Water Requirements:

- Crape Myrtles trees are drought tolerant after they are established in the landscape but will need to be watered well after planting for two weeks to three months in the establishment period depending on the size of the tree being planted and during prolonged periods of drought after established in the landscape.

Butterfly or Bird Attracting:

- n/a

Best Uses For Crape Myrtles:

- Few trees make quite the statement in the landscape that a Crape Myrtle can. They bloom for months with little care on our part to keep them looking spectacular. Its little wonder they hold such a place in our hearts and in our gardens.

- Plant them alone as a specimen accent or in groups for added dramatic flare. With so many varieties, colors and sizes to choose from, no southern garden should be without at least one!

- Crape Myrtles are the perfect touch of color when inter planted in hedge rows for privacy screens or property borders.

- Low maintenance and drought tolerant once established, Crape Myrtles make excellent commercial plantings for parking lots and street trees.

Care of Crape Myrtles:

- Water every day during the establishment period. See watering your newly planted trees for more information.

- They will need good water during the establishment period and supplemental irrigation during dry spells or particularly hot dry summers.

- All Crape Myrtles bloom on new wood and should be pruned in winter or early spring for best bloom.

- Take care to remove basal suckers and small twiggy growth each year on larger specimens and remove crossing or touching branch growth as well as branches growing towards the center rather than the more desirable growth that grows out and away from other branches.

- During the summer growth season you can choose to trim old blooms and your Crape Myrtle will put out a second lighter and slightly smaller bloom to replace it and prolong your bloom season.

- Provide a 1 ft diameter circle of mulched area where grass is kept from growing for each inch of caliper (or diameter) of trunk measured 4 inches from the ground level.

- Fertilize each spring with a heaping shovel of compost or a mixture of milorganite and a slow release poly coated plant food such as Osmocote or Stay Green general purpose plant food, sprinkling the fertilizer around the mulch circle underneath the foliage of the tree.

Fall in love with Red Rocket Crape Myrtles? Who can blame you... Check out these links to

other great Crape Myrtle Selections offered at S & J Tree Farm and Nursery

[Acoma Crape Myrtle](#)

[Burgundy Cotton Crape Myrtle](#)

[Catawba Crape Myrtle](#)

[Muskogee Crape Myrtle](#)

[Natchez Crape Myrtle](#)

[Pink Velour Crape Myrtle](#)

NC STATE UNIVERSITY



Search

Plants > All Plants > Quercus robur 'Fastigiata'

Quercus robur 'Fastigiata'

This plant has poison characteristics. See below.

Common Name(s):

Columnar English oak

Categories:

Poisonous Plants, Trees

Comment:

Partially comes true from seeds; susceptible to powdery mildew. This tree is mildly resistant to damage by deer.

Description:

Evergreen or deciduous trees; leaves alternate and simple, variously shaped in different species; pollen flowers in drooping, elongated clusters; fruit an acorn.

Height:

50-60 ft.

Flower:

1 in. acorn

Zones:

5-8

Habit:

Deciduous

Site:

Sun; prefers well drained soil; open area

Texture:

Medium

Form:

Narrow fastigate form

Poison Part:

Acorns (seeds of nuts) and young leaves.

Poison Delivery Mode:

Ingestion.

Symptoms:

Stomach pain, constipation and later bloody diarrhea, excessive thirst and urination

Edibility:

EDIBLE PARTS: Acorns (nuts) are edible after tannins are leached or boiled out. HARVEST TIME: Only collect nuts from areas you know

Toxic Principle:

Gallotannins, quercitrin, and quercetin.

Severity:

CAUSES ONLY LOW TOXICITY IF EATEN.

Found in:

Forest or natural areas; landscape as ornamental and shade trees.

Width:

10-15 ft.

Growth Rate:

Slow

Leaf:



Quercus robur 'Fastigiata'



Quercus robur 'Fastigiata'



MISSOURI BOTANICAL GARDEN

[Visit](#) [Things To Do](#) [Learn & Discover](#) [Gardens & Gardening](#) [Sustainability](#) [Plant Conservation](#) [Plant Science](#) [About](#)
[Gardens & Gardening > Your Garden > Plant Finder](#)

Gardening Help

[Plant Finder](#)
[Lawn, Landscape & Garden Design](#)
[Edible Gardening](#)
[Advice, Tips & Resources](#)
[Plants of Merit](#)
[Sustainable Gardening](#)
[Gardening Education & Classes](#)
[Visit the Center for Home Gardening](#)
[Gardening Help Site Map](#)

Gardening Help Search

[Become a Master Gardener](#)
[Determine Your Growing Zone](#)
[Plant Finder](#)
Hypericum calycinum

Like Plant Finder? Help us improve and expand it!

[Back to Previous Page](#)
[Donate Now!](#)

[See Comments](#)
[More Images](#)
[Plant of Merit](#)
[Tried and Trouble-free](#)

Recommended by 1 Professionals

Common Name: St. John's wort

Type: Deciduous shrub

Family: Hypericaceae

Native Range: Southern Europe, southwestern Asia

Zone: 5 to 9

Height: 1.00 to 1.50 feet

Spread: 1.50 to 2.00 feet

Bloom Time: July to August

Bloom Description: Bright yellow

Sun: Full sun to part shade

Water: Medium

Maintenance: Low

Suggested Use: Ground Cover

Flower: Showy

Tolerate: Drought, Erosion, Dry Soil

[Garden locations](#)

18" spacing

Culture

Easily grown in average, medium, well-drained soil in full sun to part shade. Tolerates wide range of soils. Thrives on sandy soils in full sun. Less floriferous in part shade. Evergreen in warm winter climates. Usually dies to the ground or suffers some tip dieback in cold winter climates, but blooms on new growth and comes back nicely each spring. In areas where it does not die in winter, shear or mow plants in late winter or early spring every 2-3 years to renew and induce new growth. Spreads rapidly by underground stems and can spread aggressively in ideal growing conditions. Plant 18" apart for use as a ground cover.

Noteworthy Characteristics

A stoloniferous subshrub or shrublet, typically growing 12" (less frequently to 18") high and 24" wide, which is frequently planted as a ground cover. Features large, rose-like, 5-petaled, yellow flowers (2-3" diameter) having numerous, bushy stamens with reddish anthers. Flowers appear singly or in groups of 2-3 and cover the plant in summer. Oval to oblong, distinctively net-veined (from beneath) leaves (to 4" long) are rich green in sun but are a lighter, yellowish green in shade. Four-angled stems are both procumbent and ascending. Sometimes commonly called Aaron's beard or creeping St. John's wort. Plants of the genus *Hypericum* (some species have been used since ancient times in the treatment of wounds) were apparently gathered and burned to ward off evil spirits on the eve of St. John's Day, thus giving rise to the genus common name of St. John's wort.

Problems

No serious insect or disease problems.

Garden Uses