

RESOLUTION NO. 2016-77

A RESOLUTION AUTHORIZING THE CITY OF FRANKLIN TO CONTRIBUTE \$400,000 TO THE GOOSE CREEK SANITARY SEWER EXTENTION PROJECT AS PART OF THE LAMPO GROUP CORPORATE HEADQUARTERS PROJECT.

WHEREAS, the City approved the Berry Farms PUD Subdivision (Reams-Fleming Tract), Development Plan, revision 1 in June of 2015 (Lampo Group Future Corporate Headquarters); and

WHEREAS, Smith Seckman Reid, Inc. completed a sanitary sewer study for the Goose Creek Drainage Basin in May of 2005; and

WHEREAS, Goose Creek Drainage Basin Study recommended the extension of a 12" Sanitary Sewer Main from the east side of I-65 to the west side of I-65 as shown in Exhibit A and Exhibit B to account for existing topography and broader service area; and

WHEREAS, the extension of a 12" sanitary sewer main will allow the City to one day provide gravity sanitary sewer to an additional 441 AC of land currently located in the City of Franklin and Williamson County as shown in Exhibit A; and

WHEREAS, the development of the Lampo Group Future Corporate Headquarters is expected to generate an estimate \$270,000 in Sanitary Sewer Access Fees for their development; and

WHEREAS, the City has agreed to make a contribution in an amount not to exceed \$400,000 to this sanitary sewer extension project as conceptually shown in Exhibit B with the funding source being the Water and Wastewater Fund; and

NOW THEREFORE, BE IT RESOLVED, BY THE BOARD OF MAYOR AND ALDERMEN OF THE CITY OF FRANKLIN, TENNESSEE THAT:

Authority is granted to the City Administrator to reimburse the Lampo Group, based on actual cost, in an amount not to exceed Four Hundred Thousand and no/100 Dollars (\$400,000.00) following the installation, testing, and acceptance of the sanitary sewer main as shown in Exhibit B. Payment to be made within sixty (60) days.

IT IS SO RESOLVED AND DONE on this ____ day of _____, 2016

ATTEST:

By: _____

ERIC S. STUCKEY
City Administrator

CITY OF FRANKLIN, TENNESSEE:

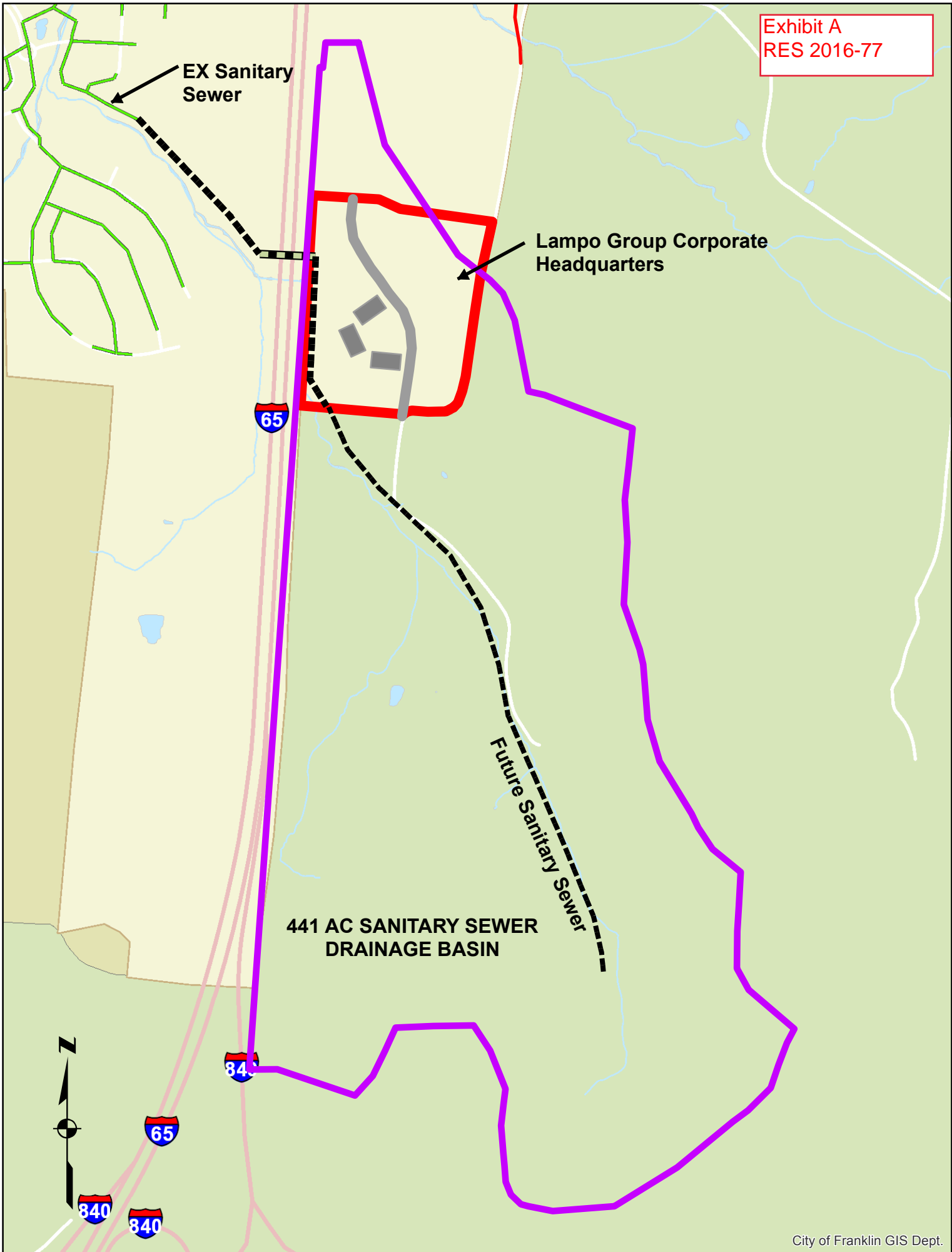
By: _____

DR. KEN MOORE
Mayor

Approved as to Form

By: _____

Shauna R. Billingsley, City Attorney

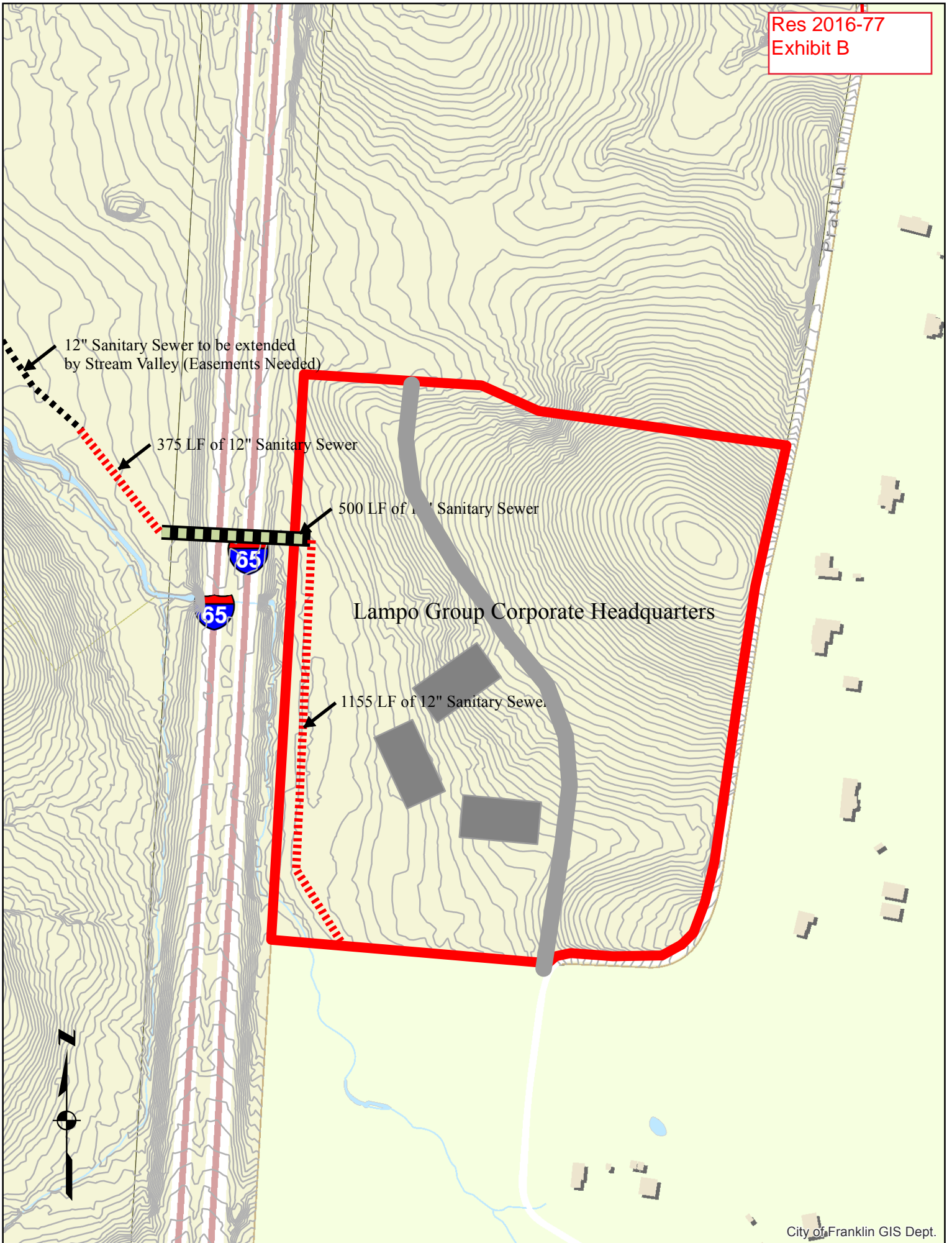


EX Sanitary Sewer

Lampo Group Corporate Headquarters

Future Sanitary Sewer

441 AC SANITARY SEWER DRAINAGE BASIN



12" Sanitary Sewer to be extended
by Stream Valley (Easements Needed)

375 LF of 12" Sanitary Sewer

500 LF of 12" Sanitary Sewer

Lampo Group Corporate Headquarters

1155 LF of 12" Sanitary Sewer