



IMAC REGENERATION CENTER
7007 MOORES LANE
FRANKLIN, WILLIAMSON COUNTY, TENNESSEE
MAP 036, PARCEL 055.02
CITY PROJECT NUMBER - #6253

NOTES

1. LOCATION AND NUMBERS OF STOREFRONT DOORS SUBJECT TO CHANGE PER TENANT REQUIREMENTS.
2. LOCATION AND NUMBERS OF REAR & EGRESS DOORS SUBJECT TO CHANGE PER TENANT REQUIREMENTS.
3. TENANT SIGNS WILL BE SUBMITTED FOR APPROVAL AS TENANT REQUIREMENTS ARE DETERMINED.
4. SPECIFIED MATERIALS MAY CHANGE SUBJECT TO AVAILABILITY AT TIME OF CONSTRUCTION AND SUBJECT TO APPROVAL OF BNS DEPARTMENT OR PLANNING COMMISSION.
5. THESE ELEVATIONS HAVE BEEN DESIGNED TO MEET THE REQUIREMENTS OF THE CITY OF FRANKLIN'S ARCHITECTURAL DESIGN STANDARDS AND THE APPROVAL OF THE PLANNING COMMISSION. CHANGES SHALL NOT BE MADE TO THE APPROVED ELEVATIONS UNLESS APPROVED BY EITHER THE BNS DEPARTMENT OR THE PLANNING COMMISSION.
6. HVAC UNITS ARE LOCATED ON THE ROOFS OF THE BUILDING AND ARE SCREENED FROM PUBLIC VIEW BY PARAPET WALLS.
7. CAVITY WALL CONSTRUCTION SHALL BE USED WHEREVER INTEGRALLY COLORED, UNPAINTED, SPLIT FACE CONCRETE BLOCK IS USED TO PREVENT WATER PENETRATION.

EXTERIOR FINISH LEGEND

- BRICK ONE**
STYLE/SIZE: MODULAR
COLOR: VELOUR BROWN
MANUFACTURER: TBD
MORTAR COLOR: BUFF
MORTAR MANUF.: TBD
- BRICK TWO**
STYLE/SIZE: MODULAR
COLOR: VELOUR MEDIUM GRAY
MANUFACTURER: TBD
MORTAR COLOR: BUFF
MORTAR MANUF.: TBD
- CUT STONE**
STYLE/SIZE: SMOOTH
COLOR: BUFF / HONED
MANUFACTURER: TBD
MORTAR COLOR: BUFF / HONED
MORTAR MANUF.: TBD
- CAST STONE ACCENT**
STYLE/SIZE: SMOOTH
COLOR: BUFF / HONED
MANUFACTURER: TBD
MORTAR COLOR: BUFF
MORTAR MANUF.: TBD
- COMPOSITE ALUM. PANEL**
STYLE/SIZE: SATIN
COLOR: SATIN ALUM. OR SLATE BLUE
MANUFACTURER: TBD
- STOREFRONT & CURTAIN WALL**
STYLE/SIZE: ALUMINUM RECTANGULAR
COLOR: CLEAR ANODIZED
MANUFACTURER: TBD
- GLAZING**
STYLE/SIZE: 1" INSULATED LOW-E
COLOR: SOLAR BLUE + SOLARBAN 70XL (3)
MANUFACTURER: TBD
- PREFINISHED METAL PARAPET COPING**
COLOR: CLEAR ANODIZED
MANUFACTURER: TBD
- CANOPY STRUCTURE & TRANSPARENT PANEL**
STYLE/SIZE: ALUMINUM RECTANGULAR
ALUM. COLOR: CLEAR ANODIZED
TRANS. PANEL COLOR: SOLAR BLUE
MANUFACTURER: TBD
- PAINT**
COLOR: TBD

MATERIAL AREA NOTES

1. MINOR MATERIALS INCLUDING COPINGS, FLASHING, AND TRIM INSTALLED OVER BRICK ARE NOT INCLUDED IN MATERIAL AREA CALCULATIONS.
2. NET WALL AREA EXCLUDES STOREFRONT, DOORS, LOUVERS AND MINOR TRIM.

MATERIAL CALCULATIONS

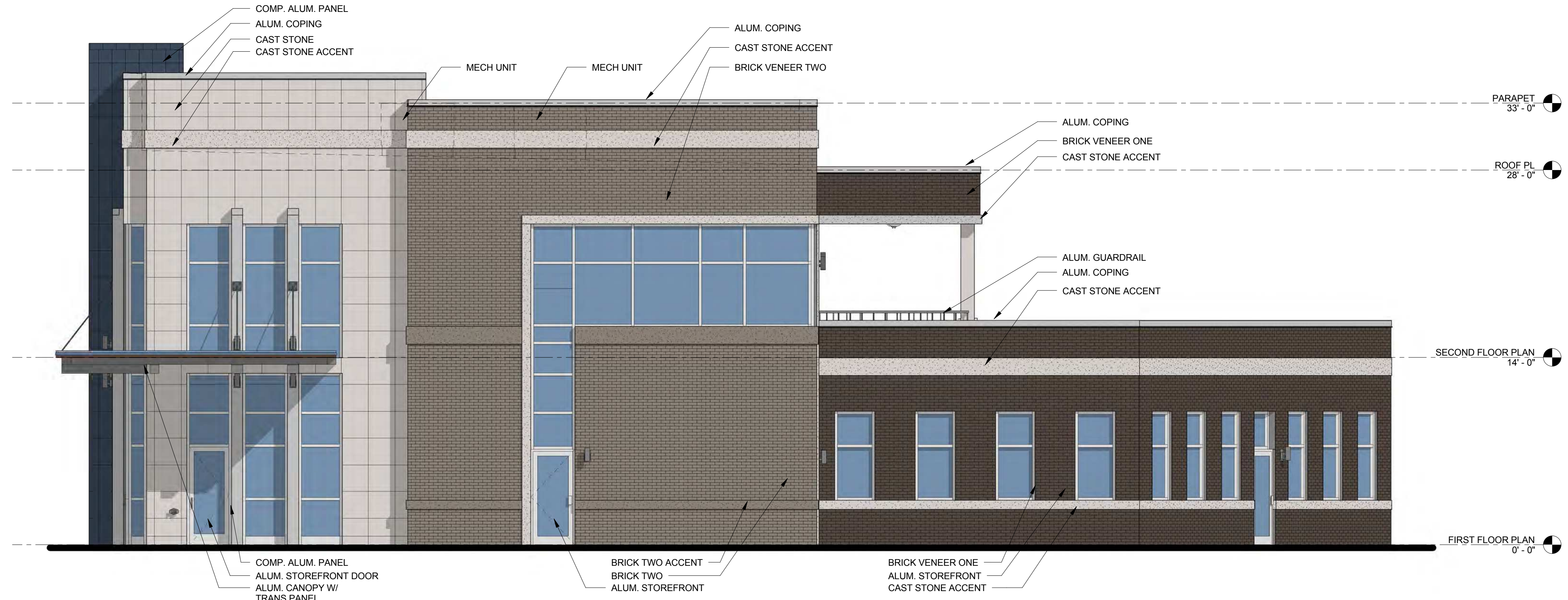
NORTH ELEVATION

	AREA	% OF NET
GROSS WALL AREA	2,507.14' S.F.	NA%
NET WALL AREA	2,047.50' S.F.	100%
BRICK 1 & 2 AREA	1,030.97' S.F.	50.34%
CUT STONE AREA	598.04' S.F.	28.71%
METAL PANEL/CANOPY	486.50' S.F.	20.92%
GLAZING	459.64' S.F.	NA%

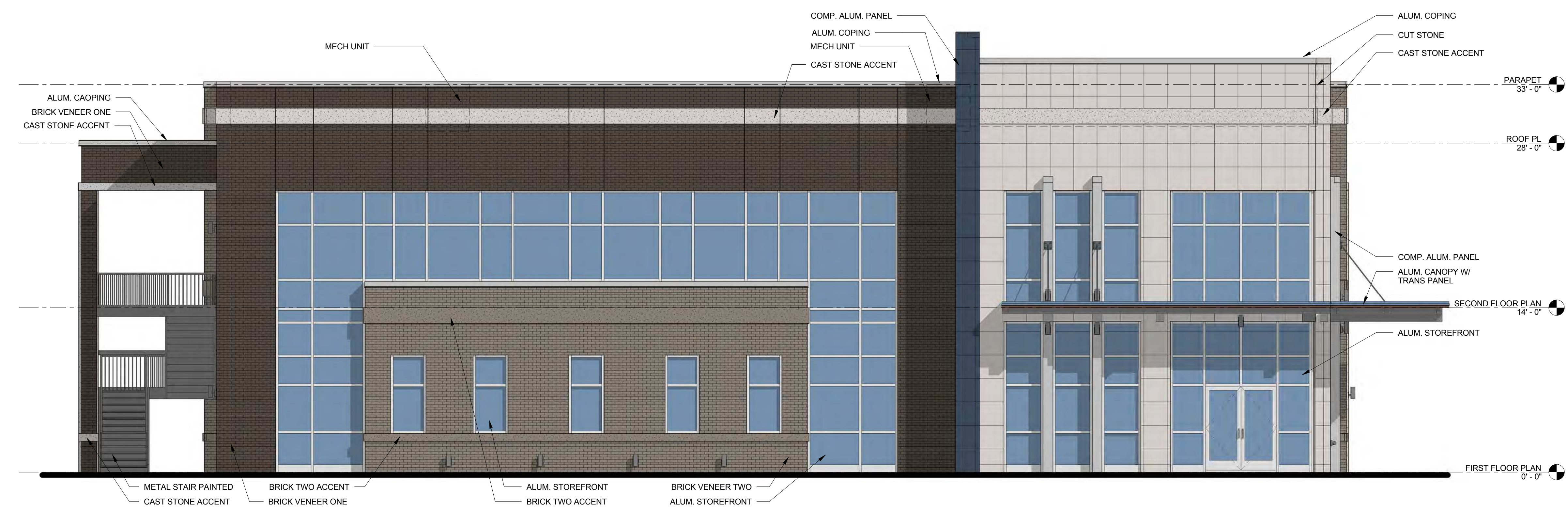
EAST ELEVATION

	AREA	% OF NET
GROSS WALL AREA	3,590.77' S.F.	NA%
NET WALL AREA	2,359.72' S.F.	100%
BRICK 1 & 2 REA	1,276.24' S.F.	54.07%
CUT STONE AREA	671.25' S.F.	28.44%
METAL PANEL/CANOPY	363.46' S.F.	15.39%
GLAZING	1,231.05' S.F.	NA%

HVAC UNITS, COOLING AND/OR MECHANICAL UNITS ARE LOCATED ON THE: ROOF



1 NORTH ELEVATION
A1.0 SCALE: 3/16" = 1'-0"



2 EAST ELEVATION
A1.0 SCALE: 3/16" = 1'-0"

Revisions

HMH Job Number
16025

Drawn By
WCA

Date
10/06/2016

Drawing
EXTERIOR
ELEVATIONS

A1.0



IMAC REGENERATION CENTER
 7007 MOORES LANE
 FRANKLIN, WILLIAMSON COUNTY, TENNESSEE
 MAP 036, PARCEL 055.02
 CITY PROJECT NUMBER - #6253

NOTES

1. LOCATION AND NUMBERS OF STOREFRONT DOORS SUBJECT TO CHANGE PER TENANT REQUIREMENTS.
2. LOCATION AND NUMBERS OF REAR & EGRESS DOORS SUBJECT TO CHANGE PER TENANT REQUIREMENTS.
3. TENANT SIGNS WILL BE SUBMITTED FOR APPROVAL AS TENANT REQUIREMENTS ARE DETERMINED.
4. SPECIFIED MATERIALS MAY CHANGE SUBJECT TO AVAILABILITY AT TIME OF CONSTRUCTION AND SUBJECT TO APPROVAL OF BNS DEPARTMENT OR PLANNING COMMISSION.
5. THESE ELEVATIONS HAVE BEEN DESIGNED TO MEET THE REQUIREMENTS OF THE CITY OF FRANKLIN'S ARCHITECTURAL DESIGN STANDARDS AND THE APPROVAL OF THE PLANNING COMMISSION. CHANGES SHALL NOT BE MADE TO THE APPROVED ELEVATIONS UNLESS APPROVED BY EITHER THE BNS DEPARTMENT OR THE PLANNING COMMISSION.
6. HVAC UNITS ARE LOCATED ON THE ROOFS OF THE BUILDING AND ARE SCREENED FROM PUBLIC VIEW BY PARAPET WALLS.
7. CAVITY WALL CONSTRUCTION SHALL BE USED WHEREVER INTEGRALLY COLORED, UNPAINTED, SPLIT FACE CONCRETE BLOCK IS USED TO PREVENT WATER PENETRATION.

EXTERIOR FINISH LEGEND

- BRICK ONE**
STYLE/SIZE: MODULAR
COLOR: VELOUR BROWN
MANUFACTURER: TBD
MORTAR COLOR: BUFF
MORTAR MANUF.: TBD
- BRICK TWO**
STYLE/SIZE: MODULAR
COLOR: VELOUR MEDIUM GRAY
MANUFACTURER: TBD
MORTAR COLOR: BUFF
MORTAR MANUF.: TBD
- CUT STONE**
STYLE/SIZE: SMOOTH
COLOR: BUFF
MANUFACTURER: TBD
MORTAR COLOR: BUFF / HONED
MORTAR MANUF.: TBD
- CAST STONE ACCENT**
STYLE/SIZE: SMOOTH
COLOR: BUFF / HONED
MANUFACTURER: TBD
MORTAR COLOR: BUFF
MORTAR MANUF.: TBD
- COMPOSITE ALUM. PANEL**
STYLE/SIZE: SATIN
COLOR: SATIN ALUM. OR SLATE BLUE
MANUFACTURER: TBD
- STOREFRONT & CURTAIN WALL**
STYLE/SIZE: ALUMINUM RECTANGULAR
COLOR: CLEAR ANODIZED
MANUFACTURER: TBD
- GLAZING**
STYLE/SIZE: 1" INSULATED LOW-E
COLOR: SOLAR BLUE + SOLARBAN 70XL (3)
MANUFACTURER: TBD
- PREFINISHED METAL PARAPET COPING**
COLOR: CLEAR ANODIZED
MANUFACTURER: TBD
- CANOPY STRUCTURE & TRANSPARENT PANEL**
STYLE/SIZE: ALUMINUM RECTANGULAR
ALUM. COLOR: CLEAR ANODIZED
TRANS. PANEL COLOR: SOLAR BLUE
MANUFACTURER: TBD
- PAINT**
COLOR: TBD

MATERIAL AREA NOTES

1. MINOR MATERIALS INCLUDING COPINGS, FLASHING, AND TRIM INSTALLED OVER BRICK ARE NOT INCLUDED IN MATERIAL AREA CALCULATIONS.
2. NET WALL AREA EXCLUDES STOREFRONT, DOORS, LOUVERS AND MINOR TRIM.

MATERIAL CALCULATIONS

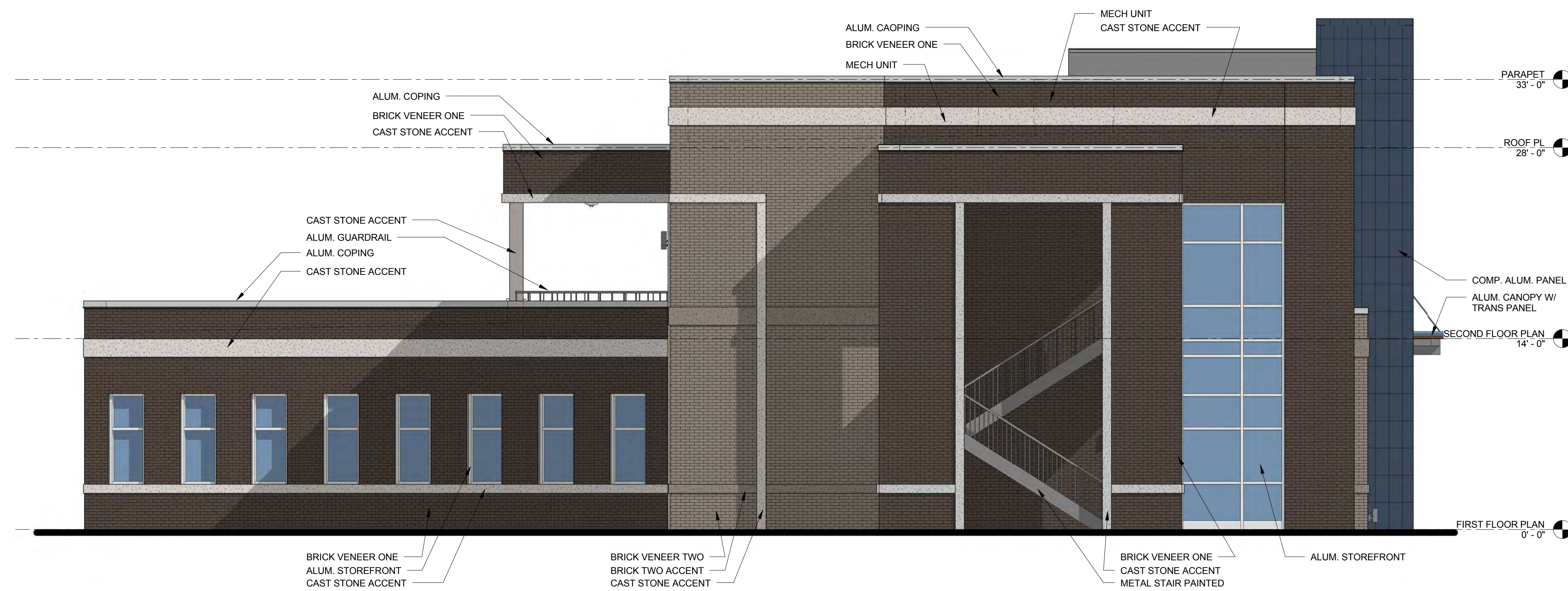
SOUTH ELEVATION

	AREA	% OF NET
GROSS WALL AREA	2,322.57' S.F.	NA%
NET WALL AREA	2,139.42' S.F.	100%
BRICK 1 & 2 AREA	1,030.97' S.F.	50.34%
CUT STONE AREA	149.94' S.F.	7.00%
METAL PANEL/CANOPY	210.55' S.F.	9.83%
GLAZING	183.15' S.F.	NA%

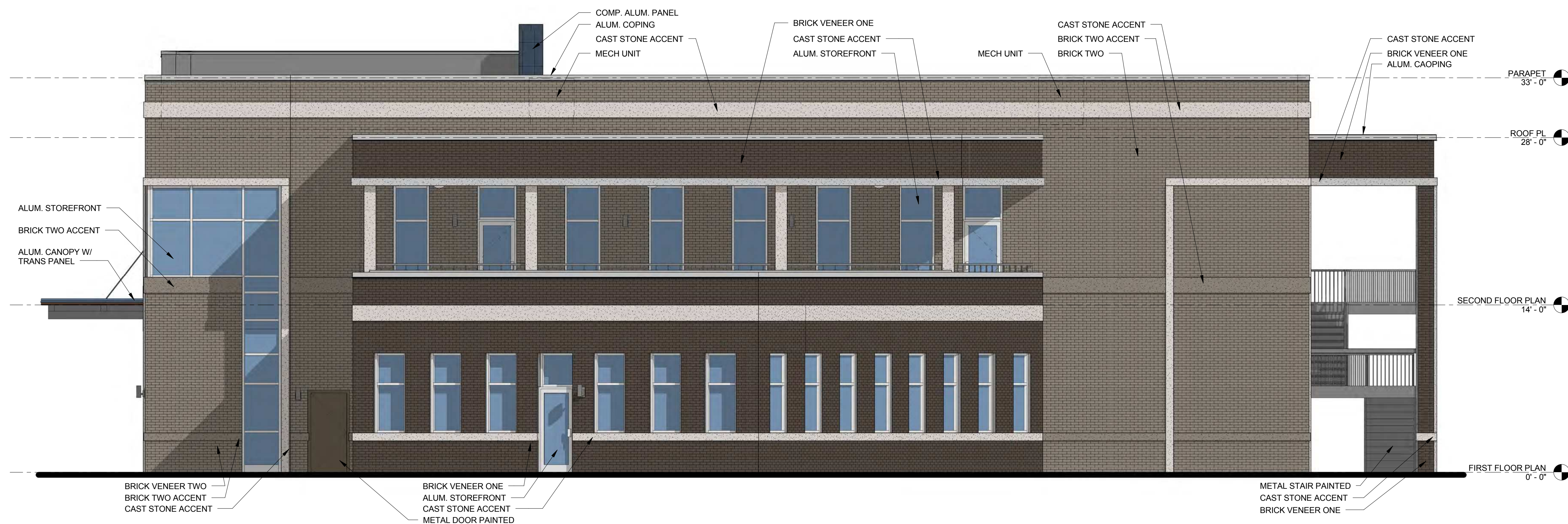
WEST ELEVATION

	AREA	% OF NET
GROSS WALL AREA	4,108.94' S.F.	NA%
NET WALL AREA	3,527.05' S.F.	100%
BRICK 1 & 2 REA	2,836.96' S.F.	80.43%
CUT STONE AREA	515.07' S.F.	14.60%
METAL PANEL/CANOPY	175.02' S.F.	4.45%
GLAZING	581.89' S.F.	NA%

HVAC UNITS, COOLING AND/OR MECHANICAL UNITS ARE LOCATED ON THE: ROOF



3 SOUTH ELEVATION
A2.0 SCALE: 3/16" = 1'-0"



4 WEST ELEVATION
A2.0 SCALE: 3/16" = 1'-0"

Revisions

HMH Job Number
16025

Drawn By
Author

Date
10/06/2016

Drawing
EXTERIOR
ELEVATIONS

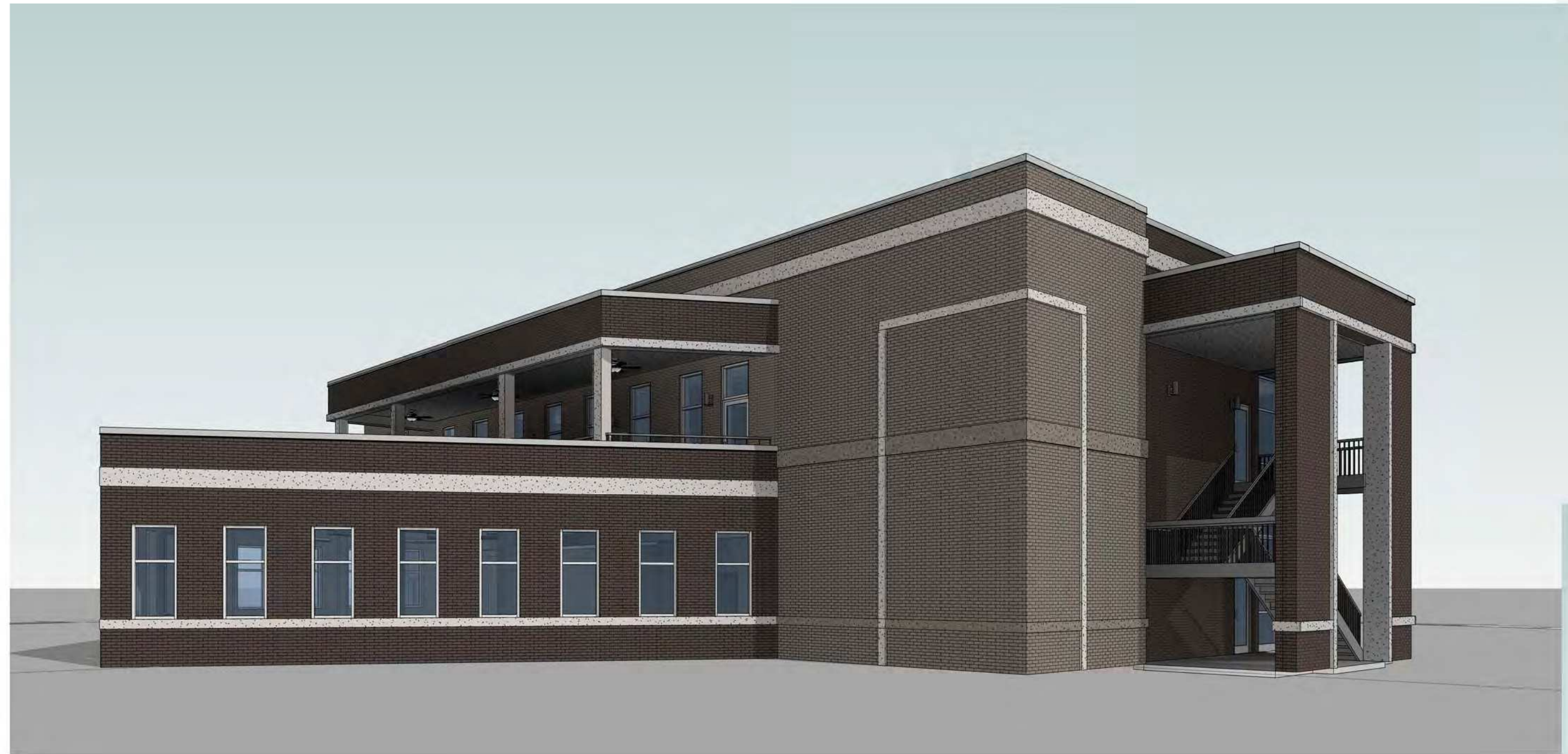
A2.0



NORTH EAST CORNER
NOT TO SCALE



SOUTH EAST CORNER
NOT TO SCALE



SOUTH WEST CORNER
NOT TO SCALE



NORTH WEST CORNER
NOT TO SCALE

IMAC REGENERATION CENTER

7007 MOORES LANE
FRANKLIN, WILLIAMSON COUNTY, TENNESSEE
MAP 036, PARCEL 055.02
CITY PROJECT NUMBER - #6253

Revisions

HMH Job Number
16025

Drawn By
Author

Date
10/06/2016

Drawing
Perspective

A3.0