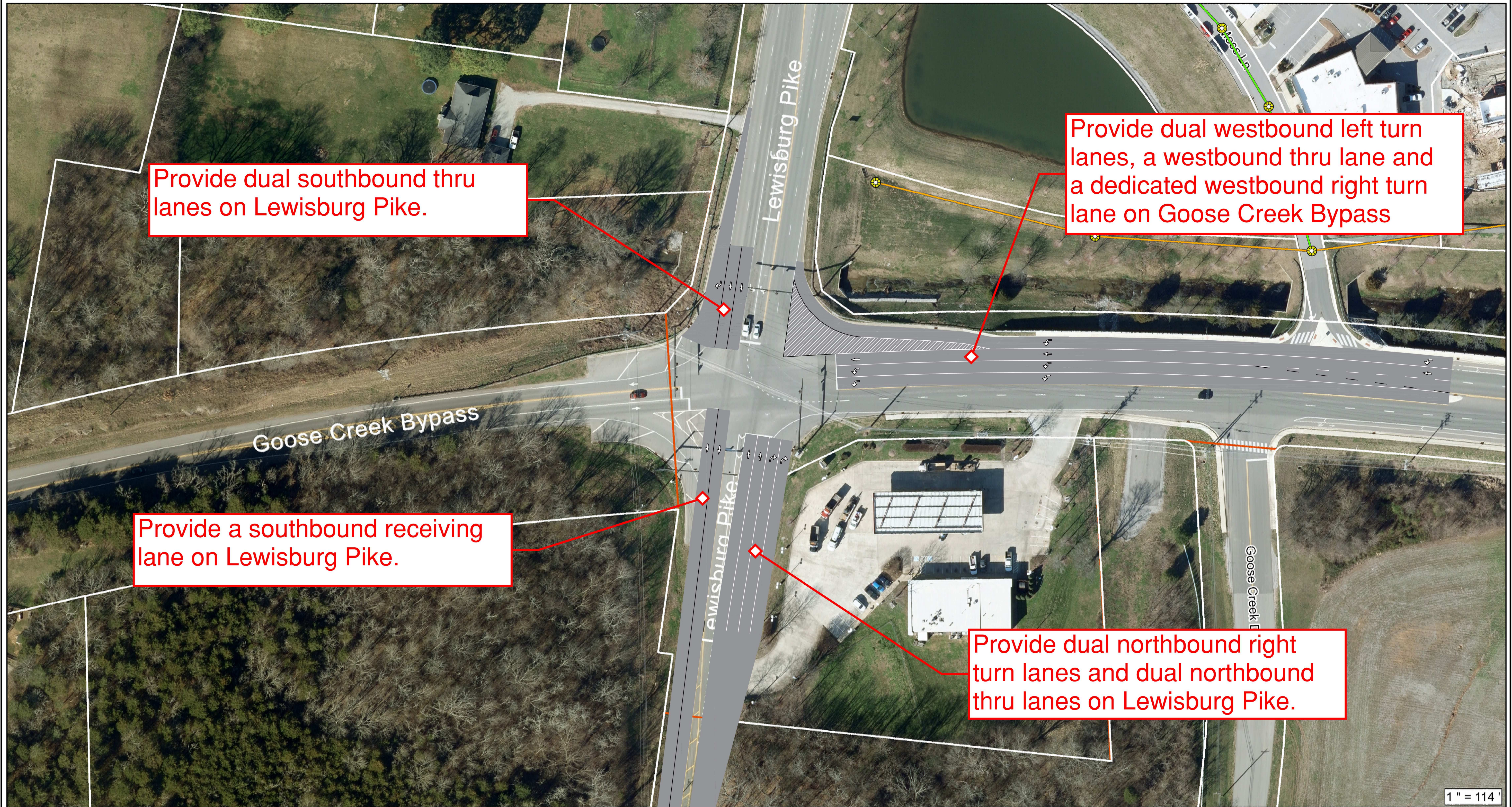


June 17, 2019



Sewer Fittings	Sewer Lift Station	Sewage Treatment Plant	Sewer Force	Abandoned Interceptor
Plug	Existing	Water Reclamation Facility	—	—
Tee	Proposed	Sewer System Valve	Sewer Gravity Pipe	Abandoned Collector
Wye	Manholes	Sewer Lateral Pipe	Private	—
Sewer Service	Flow Monitor	Sewer Pressurized Pipe	Interceptor	—
		Abandoned Force	Collector	—

FRANKLIN DISCLAIMER
 This map was created by the City of Franklin IT Department and was compiled from the most accurate information available. The City is not responsible for any errors or omissions contained herein. All data and materials Copyright © 2019. All Rights Reserved.

License Agreement:
 The data contained on this media was provided as a public service. The City of Franklin in no way grants rights of ownership to the users of this media. By using this data, you agree NOT to resell or redistribute the information contained herein. All data and materials Copyright © 2019. All Rights Reserved.



NEW TRAFFIC SIGNAL AT LEWISBURG PIKE AND STREAM VALLEY BLVD



Revision	Date
△	
△	
△	
△	

AREA 'E' SITE DATA CHART

AREA:	2,406,118 SF (55.23 AC)
EXISTING TREE CANOPY:	925,028 SF (21.23 AC)
PRESERVED TREE CANOPY:	816,201 SF (18.74 AC)
LOT BREAKDOWN:	
ATTACHED:	
24' (3BR):	28
60' (4 UNIT/LOT, 2BR):	36
90' (4 UNIT/LOT, 3BR):	36
TOTAL:	100
DETACHED:	
61'+:	4
46' - 55':	10
41' - 44':	17
34' - 40':	16
TOTAL:	47
AREA TOTAL:	147
PARKING:	
REQUIRED SPACES:	
2 / DETACHED UNIT:	94
3 / 24' UNIT & 90' UNIT (3-BR):	192
2.5 / 60' UNIT (2-BR):	90
TOTAL REQUIRED:	376
PROVIDED:	
4 / DETACHED LOT:	188
4 / 24' UNIT & 90' UNIT (2 GARAGE, 2 TANDEM):	256
2 / 60' UNIT (1 GARAGE, 1 TANDEM):	72
ON-STREET:	73
OFF-STREET:	34
TOTAL SPACES:	623

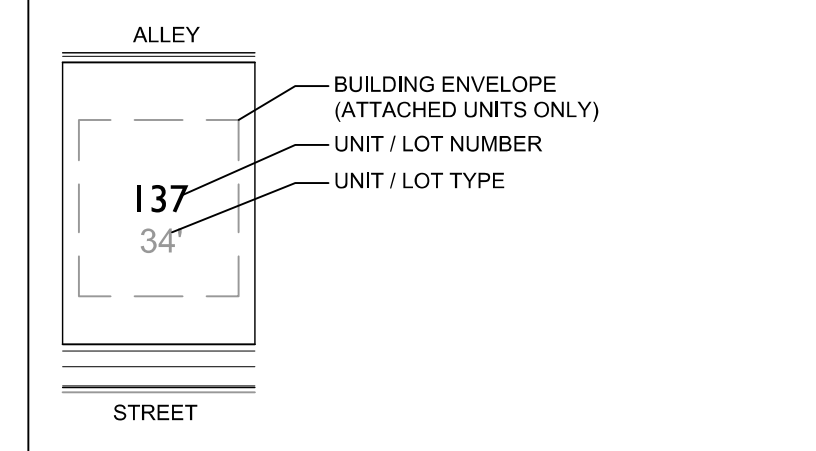
NOTE: CRITICAL LOTS- IF, AT SITE PLAN, FIELD-RUN TOPOGRAPHY SHOWS SLOPES OVER 14% WHERE SLOPES ARE PROTECTED, THEN LOTS MAY BE NON-BUILDABLE OR RECONFIGURED.

*AREA OF PROTECTED SLOPES' REFERS TO AREAS WITHIN THE HHO BUFFER THAT HAVE NATURALLY OCCURRING SLOPES GREATER THAN 14%. THESE AREAS WILL NOT BE DISTURBED. SLOPES GREATER THAN 14% THAT ARE LOCATED OUTSIDE OF THE 'AREA OF PROTECTED SLOPES' HAVE BEEN DETERMINED TO BE MAN-MADE OR INSIGNIFICANT, THEREFORE ALLOWING DEVELOPMENT TO OCCUR.

KEY

- PRESEVED CANOPY
- SLOPES - 14 - 20%
- SLOPES - 20% +
- FORMAL OPEN SPACE
- STREET LIGHT; TYP
- CRITICAL LOT

TYPICAL LOT



NOTES:

1. THERE ARE NO FLOODPLAINS EXISTING ON THE SITE BASED ON FEMA MAPS
2. AERIAL PHOTO, PARCEL LINES AND TOPOGRAPHIC INFORMATION PROVIDED BY CITY OF FRANKLIN G.I.S.
3. SITE BOUNDARY CALLS PROVIDED BY WILSON & ASSOCIATES.
4. NO THIRD PARTY MINERAL RIGHTS ARE ASSOCIATED WITH THIS PROPERTY.

COLLECTOR EXTENSION TO MCLEMORE

