

**RESOLUTION 2016-59**

**A RESOLUTION ADOPTING AND UPDATING THE BICENTENNIAL PARK MASTER PLAN**

**WHEREAS**, on April 12, 2016, the Board of Mayor and Aldermen approved a Professional Services Agreement (COF 2016-0064) with Barge Waggoner Sumner & Cannon, Inc. to update the Bicentennial Park Master Plan and provide schematic designs; and

**WHEREAS**, the primary purpose of the updated master plan is to define expectations for the use of the Park and to assist in decision-making regarding capital improvements and other changes proposed in the Park; and

**WHEREAS**, over the last few years, the Board of Mayor and Aldermen invested over \$6,100,000 into Bicentennial Park to include the extension of 3<sup>rd</sup> Ave North, the Harpeth River Trail, Point Park and the Fourth Avenue Overlook; and

**WHEREAS**, the Bicentennial Park Master Plan generally includes environmental remediation work, repairs and renovation to the pavilion structure, restrooms, river overlooks, stormwater enhancements and other passive elements as shown on Bicentennial Park – Schematic Site Plan (Exhibit A);

**WHEREAS**, the Bicentennial Park Master Plan will be reevaluated and updated, as approved by the Board of Mayor and Aldermen, following the completion of the downtown parking study.

**NOW THEREFORE, BE IT RESOLVED BY THE BOARD OF MAYOR AND ALDERMEN OF THE CITY OF FRANKLIN, TENNESSEE**, that the Bicentennial Park Schematic Site Plan (Exhibit A) is hereby adopted as depicted in Exhibit A attached hereto.

**IT IS SO RESOLVED AND DONE** on this the \_\_\_\_ day of \_\_\_\_\_, 2016.

**ATTEST:**

**CITY OF FRANKLIN, TENNESSEE:**

By: \_\_\_\_\_  
**ERIC S. STUCKEY**  
City Administrator/Recorder

By: \_\_\_\_\_  
**DR. KEN MOORE**  
Mayor

**Approved As To Form By:**

\_\_\_\_\_  
**Shauna R. Billingsley**  
City Attorney



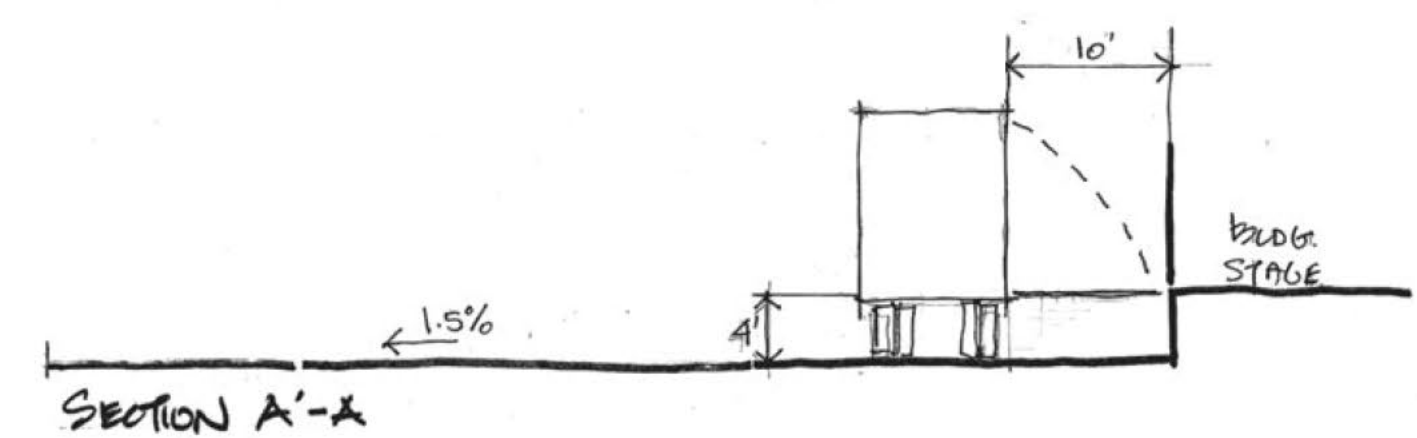


- LEGEND**
- 1 PARK ENTRY/GATEWAY
  - 2 PARK ENTRY PLAZA
  - 3 PARK SHELTER
  - 4 ELEVATED RESTROOM BUILDING
  - 5 SPECIALTY PAVEMENT REPRESENTING HISTORIC INTER-URBAN RAIL
  - 6 VERTICAL ARCHITECTURAL ENTRY FEATURES
  - 7 PEDESTRIAN PLAZA WITH INTERPRETIVE SIGNAGE
  - 8 TRELLIS COVERED PLAZA, FLUSH WITH EXISTING BUILDING
  - 9 AT GRADE ENTRY TO EXISTING PAVILION
  - 10 RAISED PLANTERS (TYP)
  - 11 FLEXIBLE PARKING / PLAZA AREA (+/- 56 SPACES)
  - 12 COVERED STAGE / PLAZA
  - 13 STADIUM SEATING
  - 14 RADIAL ACCENT PERVIOUS PAVING
  - 15 RAMP INTO EXISTING PAVILION
  - 16 EXISTING DUST COLLECTOR ENTRY FEATURE
  - 17 PEDESTRIAN BRIDGE
  - 18 ENTRY PLAZA
  - 19 WATER QUALITY POND / DRAINAGE SWALE
  - 20 REINFORCED TURF PARKING (+/- 197 SPACES)
  - 21 SPACE FOR PORTABLE TOILETS
  - 22 STONE WALL w/ ACCENT PIERS
  - 23 BUS PARKING (3 SPACES)
  - 24 GREENWAY CONNECTION
  - 25 OUTDOOR LAWN EVENT SPACE
  - 26 ON STREET PARALLEL PARKING
  - 27 GARBAGE RECEPTACLE
  - 28 ENTRY/TRUCK ACCESS RAMP
  - 29 BIKE STATION
  - 30 ROTATING PUBLIC ART EXHIBITS

- KEY**
- REINFORCED TURF
  - SPECIALTY PAVEMENT
  - PLANTING BED
  - SHADE TREE
  - EXISTING STRUCTURES
  - PROPOSED BUILDING
  - PUBLIC ART/SCULPTURE
  - CONCRETE WALK
  - EXISTING TREES
  - 13 VIRTUES OF BENJAMIN FRANKLIN STATUES
  - SMALL FLOWERING TREE
  - SITE BOUNDARY
  - FLOODWAY LINE
  - VEHICULAR ENTRY/ACCESS



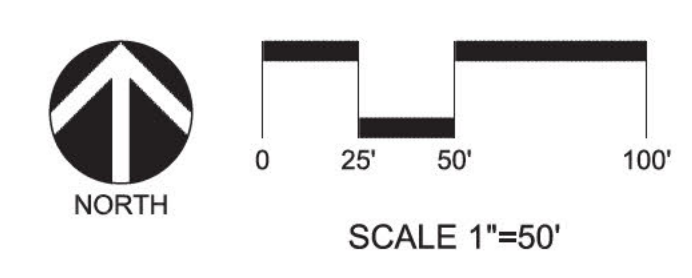
13 VIRTUES OF BEN FRANKLIN SCULPTURES



STAGE TRUCK ACCESS SECTION

**BICENTENNIAL PARK - SCHEMATIC SITE PLAN**  
**CITY OF FRANKLIN, TN**

AUGUST 9, 2016



**BWSC**

FILE NO: 35\35968\3596801\04\_CAD\LAND





INDUSTRIAL DUST COLLECTOR



EXISTING PAVILION



DRY STACK STONE WALLS

**HISTORIC SITE ELEMENTS/ MATERIALS**



CONCRETE PAVERS



STAMPED CONCRETE

**DESIGN ELEMENTS/ MATERIALS**



DRY STACK STONE WALLS



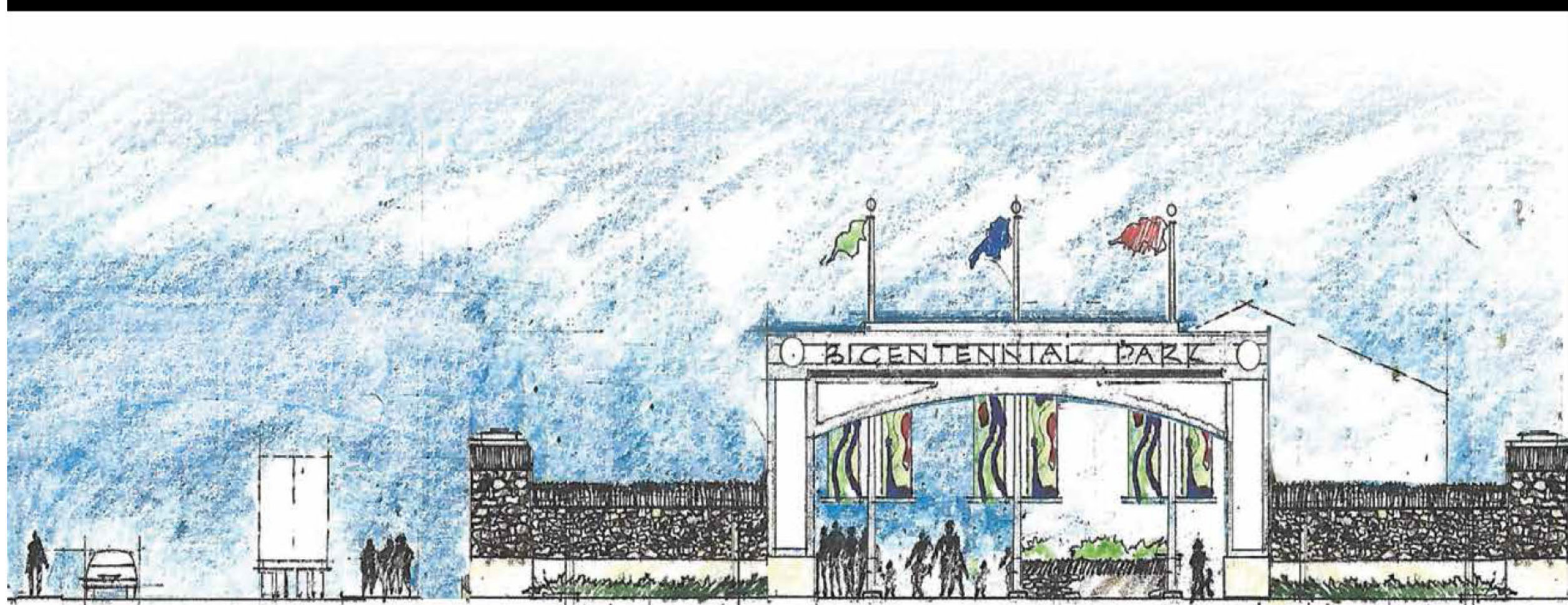
ARCHITECTURAL GATEWAY FEATURE



LIGHT DUTY - GRASS PROTECTA

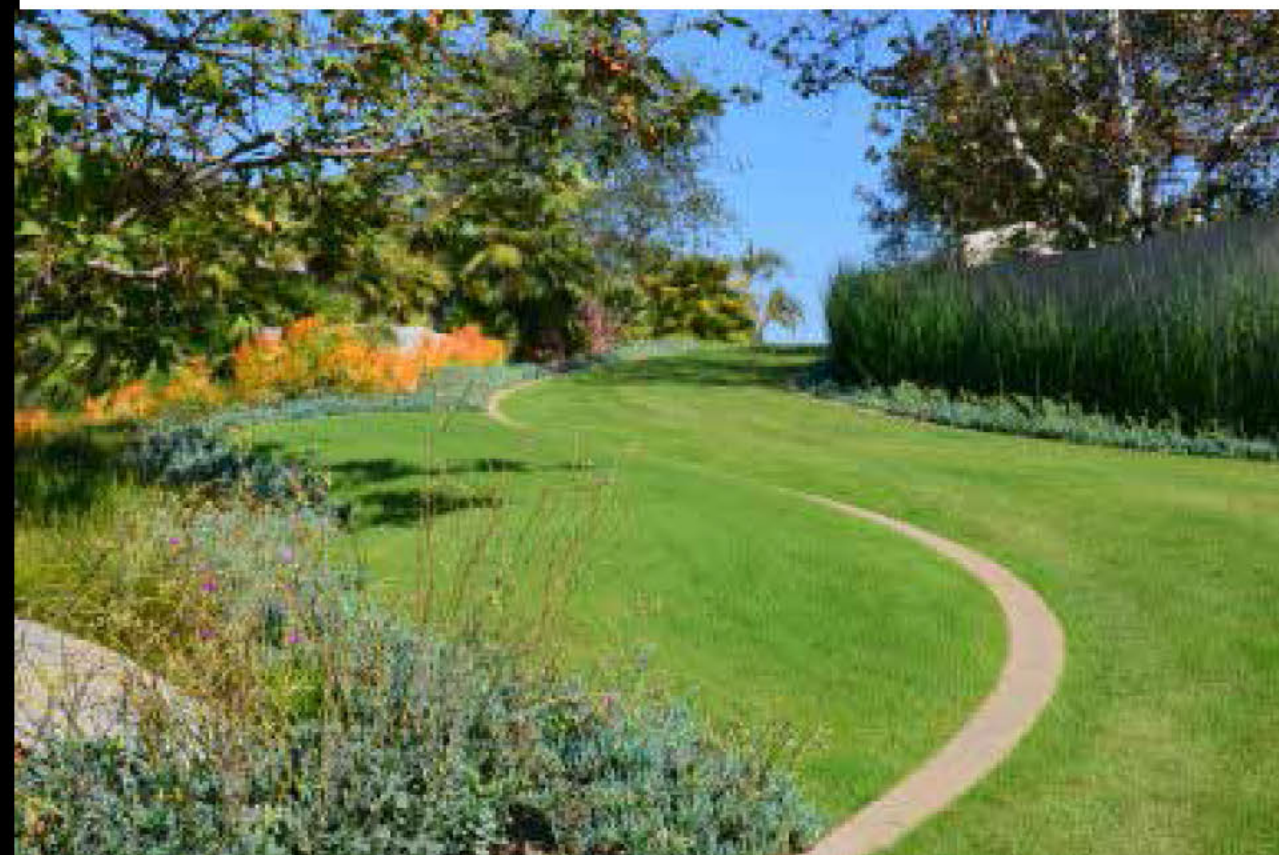


BANNERS / FLAGS



PARK ENTRY CONCEPT

HEAVY DUTY - BODPAVE85



REINFORCED TURF



ARCHITECTURAL ENTRY FEATURE  
VERTICAL DESIGN ELEMENTS

**BICENTENNIAL PARK - IMAGE BOARD**  
**CITY OF FRANKLIN, TN**

AUGUST 9, 2016

**BWSC**

FILE NO: 35\35968\3596801\04\_CAD\LAND