



IF YOU DIG TENNESSEE...
CALL US FIRST!
1-800-351-1111
1-615-366-1987
TENNESSEE ONE CALL
IT'S THE LAW

THE CITY OF FRANKLIN IS NOT A PART OF TN ONE CALL.
PLEASE CONTACT THE CITY DIRECTLY FOR LOCATION MARKINGS.



H. Michael Hindman
Architects, P.C.

1607 Westgate Circle - Suite 100
Brentwood, Tennessee 37027
615.370.2022
www.hmhaarchitects.com

OFFICE BUILDING FOR

**Touchstone
Medical
Imaging**

LYNWOOD WAY
LOT 137 GATEWAY
VILLAGE SECTION 3
FRANKLIN, TENNESSEE

LAYOUT NOTES

- THE CONTRACTOR SHALL CHECK ALL FINISHED GRADES AND DIMENSIONS IN THE FIELD AND REPORT ANY DISCREPANCIES TO THE OWNER'S REPRESENTATIVE OR ENGINEER PRIOR TO BEGINNING WORK.
- THE CONTRACTOR SHALL VERIFY THE EXACT LOCATION OF ALL EXISTING UTILITIES. TAKE CARE TO PROTECT UTILITIES THAT ARE TO REMAIN. REPAIR CONTRACTOR CAUSED DAMAGE ACCORDING TO LOCAL STANDARDS AND AT THE CONTRACTOR'S EXPENSE. COORDINATE ALL CONSTRUCTION WITH THE APPROPRIATE UTILITY COMPANY.
- THE CONTRACTOR SHALL CONFORM TO ALL LOCAL CODES AND OBTAIN ALL PERMITS PRIOR TO BEGINNING WORK.
- PROVIDE A SMOOTH TRANSITION BETWEEN EXISTING PAVEMENT AND NEW PAVEMENT. FIELD ADJUSTMENT OF FINAL GRADES MAY BE NECESSARY. INSTALL ALL UTILITIES PRIOR TO INSTALLATION OF PAVEMENT.
- ALL DAMAGE TO EXISTING ASPHALT PAVEMENT TO REMAIN, WHICH RESULTS FROM NEW CONSTRUCTION, SHALL BE REPLACED WITH LIKE MATERIALS AT CONTRACTOR'S EXPENSE.
- DIMENSIONS ARE TO THE EDGE OF ASPHALT UNLESS OTHERWISE NOTED.
- CONTRACTOR SHALL EXERCISE EXTREME CAUTION IN THE USE OF EQUIPMENT IN AND AROUND OVERHEAD ELECTRICAL WIRES AND SERVICES. IF AT ANY TIME IN THE PURSUIT OF THIS WORK, THE CONTRACTOR MUST WORK IN CLOSE PROXIMITY OF THE ABOVE NOTED WIRES, THE ELECTRICAL COMPANY SHALL BE CONTACTED PRIOR TO SUCH WORK AND THE PROPER SAFETY MEASURES TAKEN.
- IN EASEMENTS AND RIGHTS-OF-WAY, CONTRACTOR SHALL PROTECT AND RESTORE SAID PROPERTY TO A CONDITION SIMILAR OR EQUAL TO THAT EXISTING AT THE COMMENCEMENT OF CONSTRUCTION EXCEPT AS NOTED.
- THE CONTRACTOR SHALL COMPLY WITH ALL PERTINENT PROVISIONS OF THE "MANUAL OF ACCIDENT PREVENTION IN CONSTRUCTION" ISSUED BY AOC OF AMERICA, INC. AND THE "SAFETY AND HEALTH REGULATIONS FOR CONSTRUCTION" ISSUED BY THE U.S. DEPARTMENT OF LABOR.

SITE DATA:

SUBDIVISION/DEVELOPMENT:	GATEWAY VILLAGE PUD SUBDIVISION DEVELOPMENT PLAN, REVISION 4, TOUCHSTONE OFFICE BUILDING
ADDRESS:	1360 MOHER BLVD.
CITY:	FRANKLIN
COUNTY:	WILLIAMSON
STATE:	TENNESSEE
PARCEL MAP:	PARCEL 49 MAP 064B GROUP B
ACREAGE OF SITE:	1.45± ACRES
SQUARE FOOTAGE OF SITE:	63,245± S.F.
NEW IMPERVIOUS AREA:	0.76± ACRES
DISTURBED ACREAGE:	1.20± ACRES
CIVIL DISTRICT:	3 RD
ZONING DISTRICT:	SD-X 6.64/144, 258
CHARACTER AREA:	BERRYS CHAPEL-4
DEVELOPMENT STANDARD:	TRADITIONAL
EXISTING USE:	VACANT
PROPOSED USE:	OFFICE
APPLICANT:	ARCHITECT MR. MICHAEL HINDMAN, A.I.A. H. MICHAEL HINDMAN ARCHITECTS, P.C. 1607 WESTGATE CIRCLE, SUITE 100 BRENTWOOD, TN 37027 (615) 370-3252
ENGINEER:	MR. JARED R. GRAY, P.E. CIVIL DESIGN CONSULTANTS, LLC. 8170 COLEY DAVIS RD. NASHVILLE, TN 37221 (615) 636-8207
LANDSCAPE ARCHITECT:	MR. CONNOR BALL, RLA HEIBERT + BALL LAND DESIGN 1894 GENERAL GEORGE PATTON DR. FRANKLIN, TN 37067 (615) 376-2421

BUILDING SQUARE FOOTAGE:	21,000 S.F. (MEDICAL OFFICE)
PARKING REQUIRED:	60 SPACES
PARKING PROVIDED:	60 SPACES

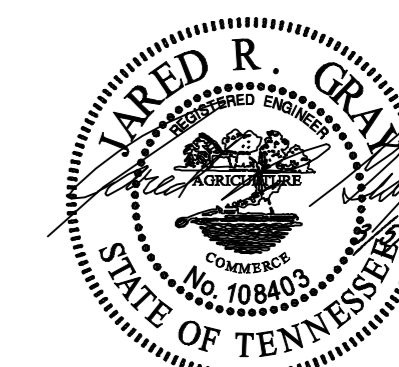
ALL 90° PARKING ADJACENT TO THE PROPOSED BUILDING SHALL BE 9'X18' UNLESS OTHERWISE NOTED
ALL PERIMETER SPACES ARE 9'X16' UNLESS OTHERWISE NOTED ALL DRIVE AISLES ARE 24' WIDE
ALL PARKING ADJACENT TO ISLANDS SHALL BE 10'X18'
SEE LANDSCAPE ARCHITECTURE PLAN FOR ADDITIONAL LAND DISTURBANCE AND GREEN SPACE CALCULATIONS.

PAVEMENT LEGEND

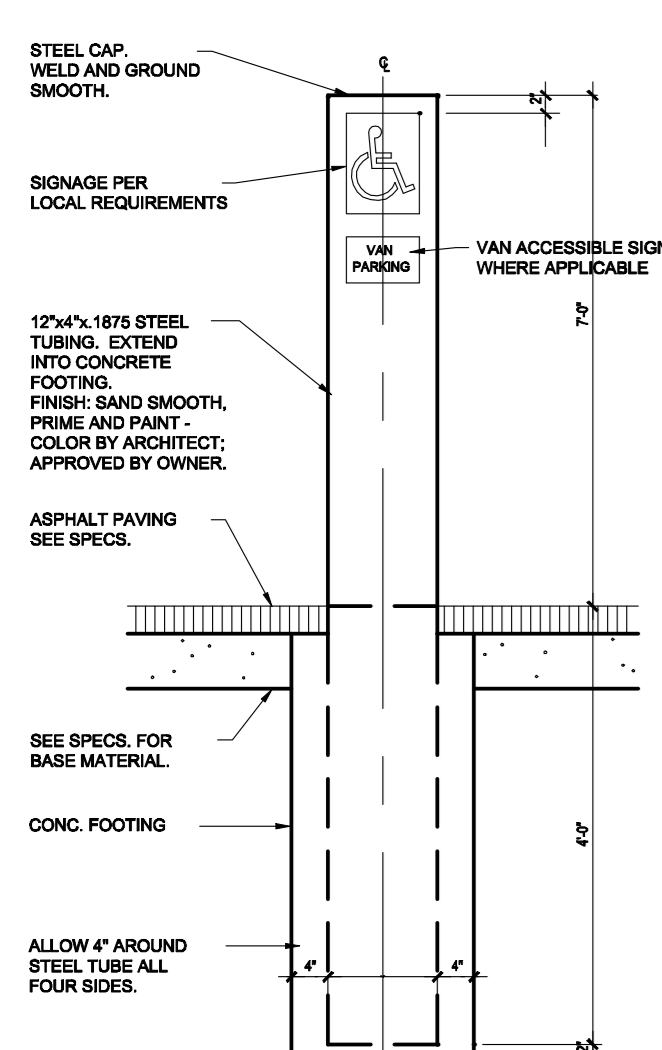
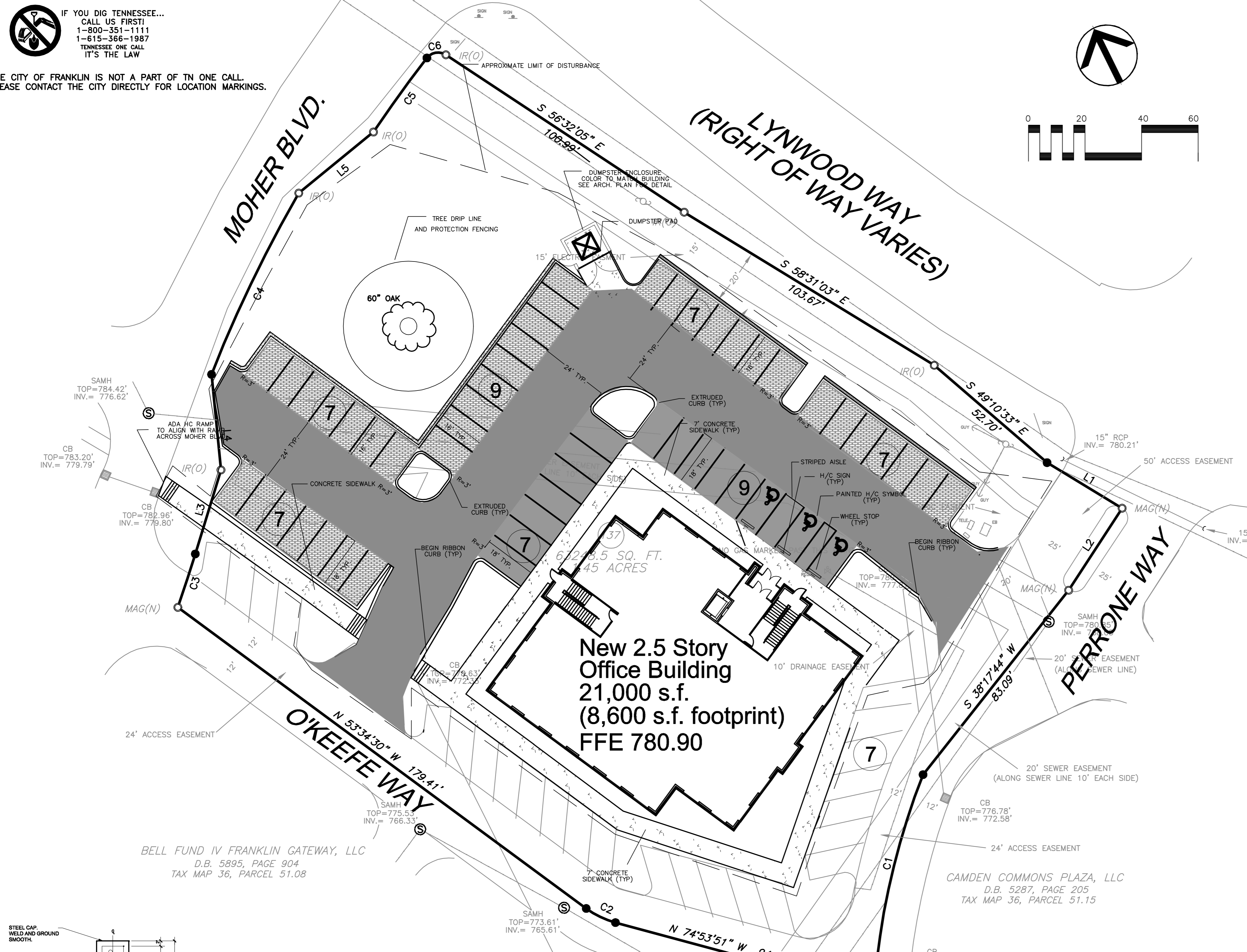
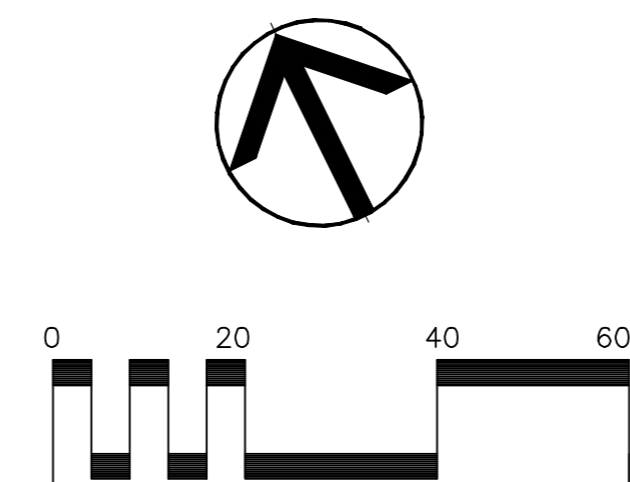
	HEAVY DUTY ASPHALT PAVEMENT
	LIGHT DUTY ASPHALT PAVEMENT
	CONCRETE PAVEMENT/FILTER STRIP
	CONCRETE WALK
	CONCRETE PAVERS

PARKING COUNT

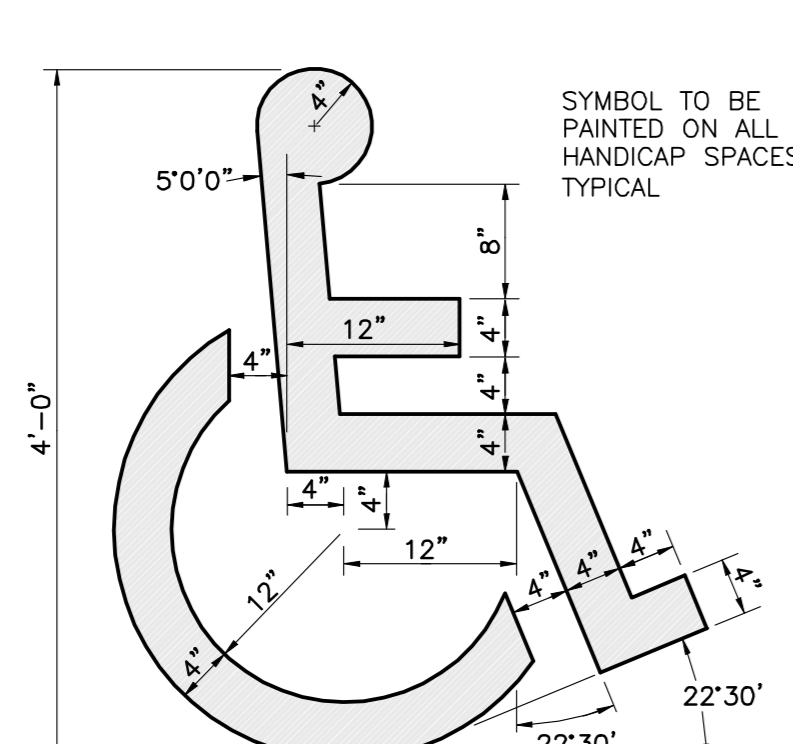
CIVIL DESIGN CONSULTANTS, LLC
CIVIL ENGINEERS - LAND PLANNERS
8170 COLEY DAVIS RD., NASHVILLE, TN 37221
PHONE: (615) 358-2254 FAX: (615) 358-2254



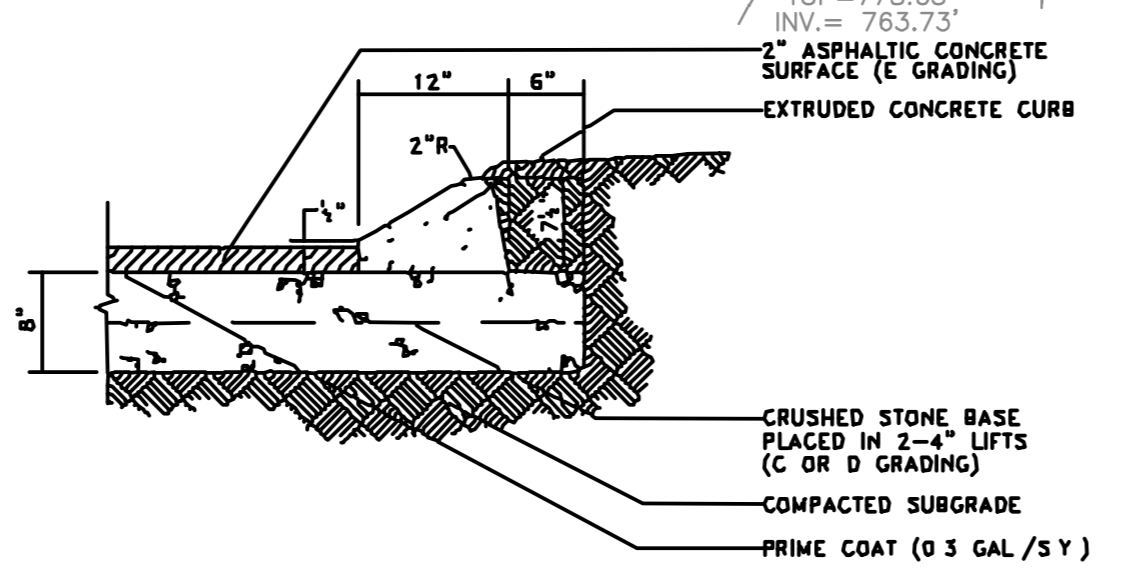
COF #5740



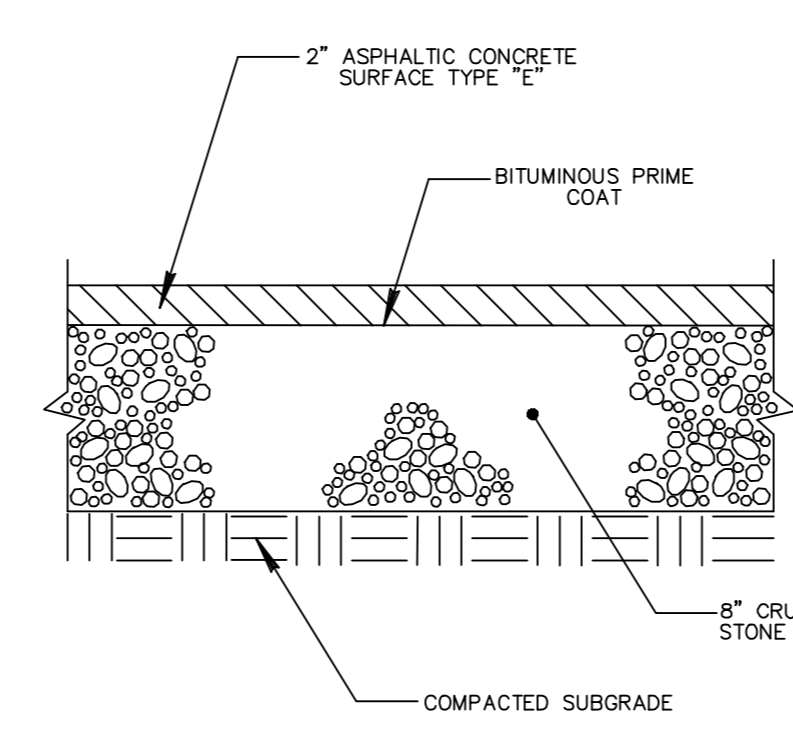
EXTERIOR HANDICAP SIGN
NOT TO SCALE



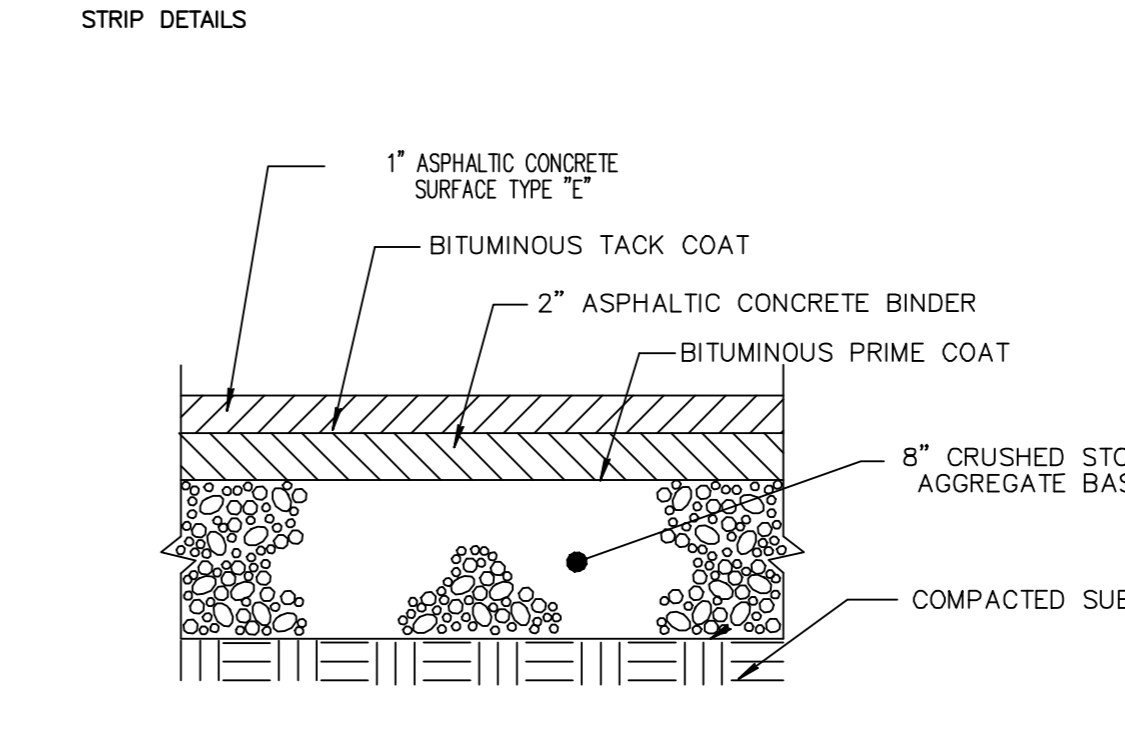
PAINTED HANDICAP SYMBOL
NOT TO SCALE



EXTRUDED CURB DETAIL
NOT TO SCALE



LIGHT DUTY ASPHALT DETAIL
NOT TO SCALE



HEAVY DUTY ASPHALT DETAIL
NOT TO SCALE

Revisions

HMH Job Number
14035
Drawn By
HMH
Date
07.28.14
Drawing
LAYOUT PLAN

C1.0