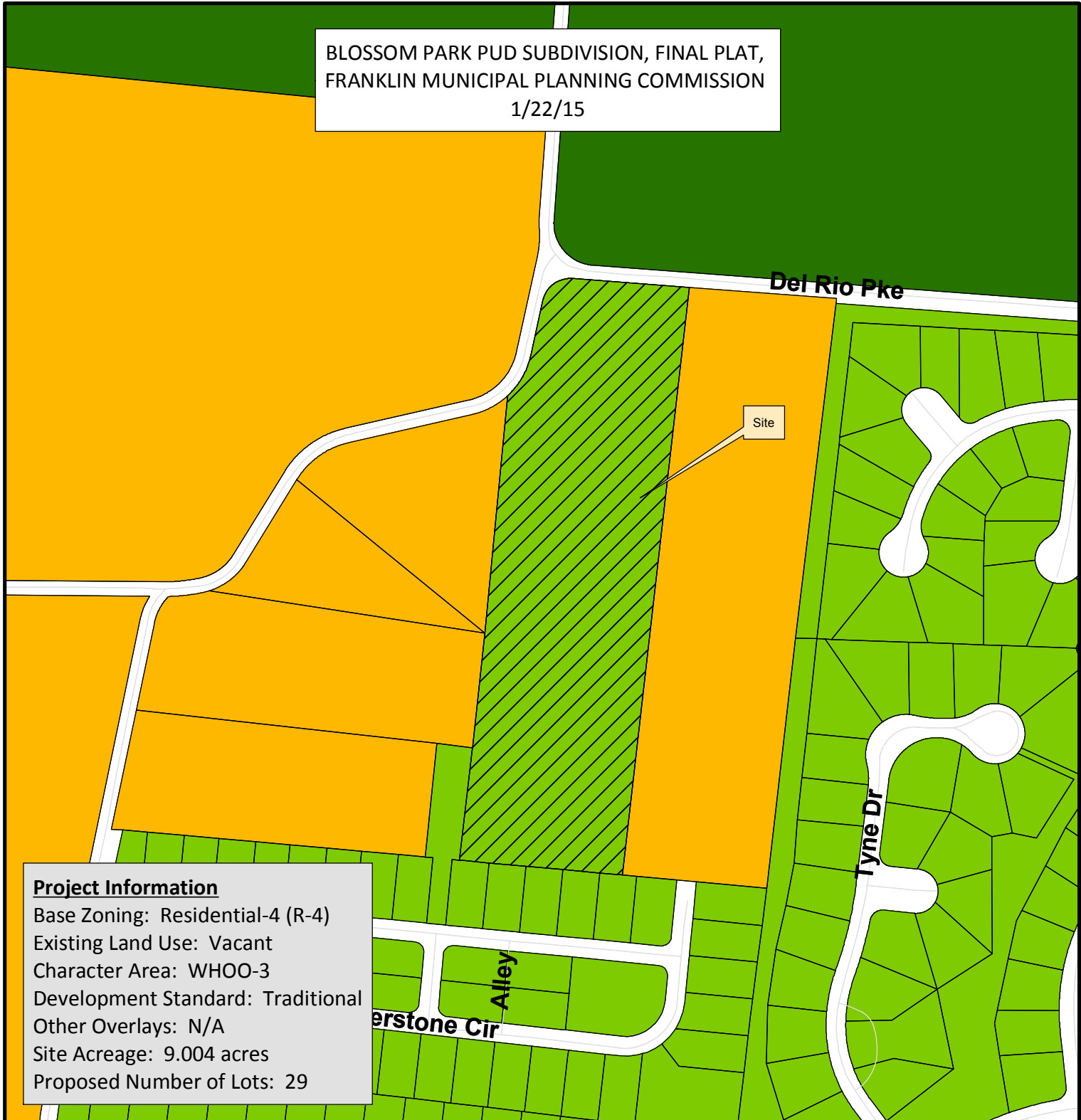
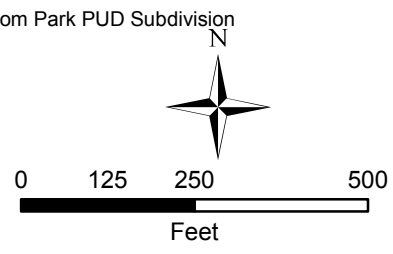


BLOSSOM PARK PUD SUBDIVISION, FINAL PLAT,
FRANKLIN MUNICIPAL PLANNING COMMISSION
1/22/15



Project Information
 Base Zoning: Residential-4 (R-4)
 Existing Land Use: Vacant
 Character Area: WHOO-3
 Development Standard: Traditional
 Other Overlays: N/A
 Site Acreage: 9.004 acres
 Proposed Number of Lots: 29

- | | | |
|--|-------------------------------------|------------------------------|
| AG Agricultural District | SD-X Specific Development-Variety | Blossom Park PUD Subdivision |
| ER Estate Residential | OR Office Residential District | |
| R-1 Residential District | GO General Office District | |
| R-2 Residential District | CC Central Commercial District | |
| R-3 Residential District | NC Neighborhood Commercial District | |
| R-6 Historic Core Residential District | GC General Commercial District | |
| RM-10 Attached 10 Residential District | LI Light Industrial District | |
| RM-15 Attached 15 Residential District | HI Heavy Industrial District | |
| RM-20 Attached 20 Residential District | CI Civic and Institutional District | |
| SD-R Specific Development-Residential | Blossom Park PUD Subdivision | |



This map was created by the Franklin Planning Department. It was compiled from the most authentic information available. The City is not responsible for any errors or omissions contained herein. All data and materials (c) copyright 2014. All rights reserved.