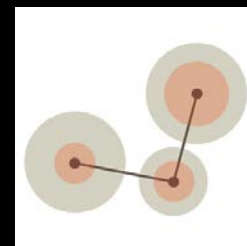




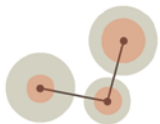
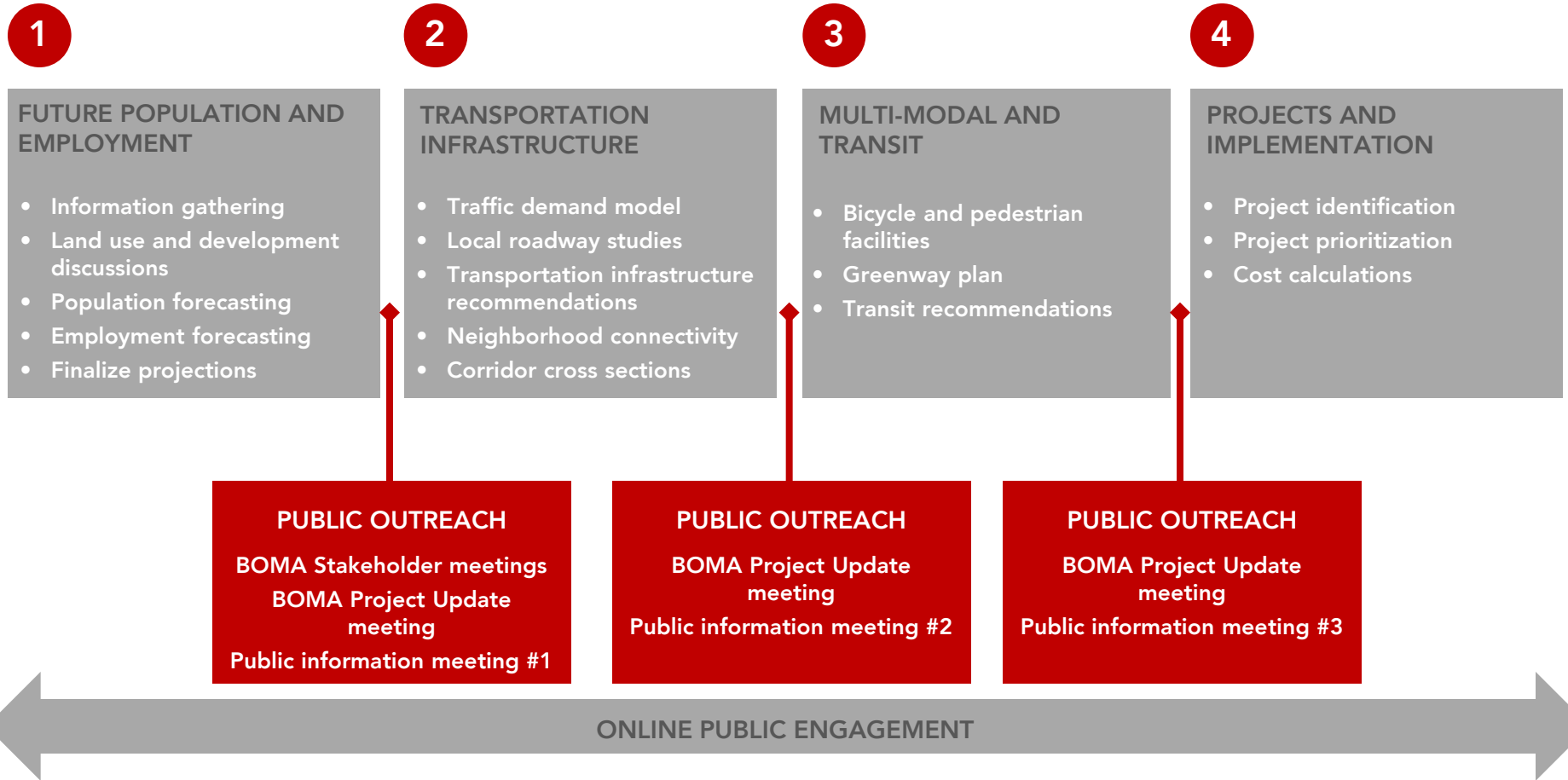
CONNECT FRANKLIN

A Comprehensive Transportation Plan

OCTOBER 14, 2014



PROJECT OVERVIEW



PROJECT OVERVIEW

PROJECT ADMINISTRATION

- BOMA stakeholder meetings
- Creation of project visual identity
- Online project communication tools
- Ongoing community engagement and feedback

1

FUTURE POPULATION AND EMPLOYMENT

- Information gathering
- Land use and development discussions
- Population forecasting
- Employment forecasting
- Finalize projections

2

TRANSPORTATION INFRASTRUCTURE

- Traffic demand model
- Local roadway studies
- Transportation infrastructure recommendations
- Neighborhood connectivity
- Corridor cross sections

3

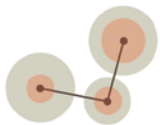
MULTI-MODAL AND TRANSIT

- Bicycle and pedestrian facilities
- Greenway plan
- Transit recommendations

4

PROJECTS AND IMPLEMENTATION

- Project identification
- Project prioritization
- Cost calculations



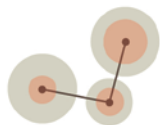
BOMA INTERVIEWS

Interviews were held with individual BOMA members and representatives from CHA.

Major topics included:

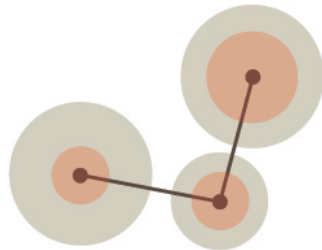
- Safety concerns
- Congestion issues
- Inadequate facilities
- Area opportunities
- Growth areas
- Future concerns
- Transit
- Multi-modal

A complete summary of the interviews is included in your packet.

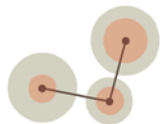


ONLINE ENGAGEMENT

Project branding and visual identity



CONNECT FRANKLIN
A COMPREHENSIVE TRANSPORTATION PLAN
CITY OF FRANKLIN, TENNESSEE



CONNECT FRANKLIN A COMPREHENSIVE TRANSPORTATION PLAN
CITY OF FRANKLIN, TENNESSEE



ONLINE ENGAGEMENT

Online tools for communication



PROJECT WEBSITE

- Provides project overview, FAQ, events and project documents
- 706 page views
- 201 unique visitors



FACEBOOK

- Utilizing City of Franklin page
- Potential to reach 12,000 people
- Posts are being seen by 600-700 people
- Posts are being shared and commented on



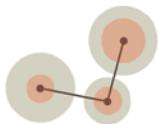
TWITTER

- Utilizing City of Franklin page
- Facebook feeds automatically link to Twitter
- Potential to reach over 9,000 people
- Posts are being retweeted



MINDMIXER

- Site linked to City Facebook page
- 8 open topics
- 90 participants
- 47 comments
- 7 shares



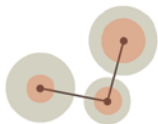
COMMUNITY FEEDBACK

- Additional access given to neighborhoods.
- City needs additional sidewalks and a comprehensive bikeway/ bike lane system.
- Connect neighborhoods with schools.
- Manage truck traffic
- Manage development and growth
- Numerous locations of concern and perceived congestion and safety issues

Dashboard Traffic Overview Participants Ideas

Welcome to Franklin, TN Comprehensive Transportation Plan's Reporting Interface

The Reporting Interface displays all of the activity from your project.



POPULATION AND EMPLOYMENT

EXISTING LAND USES

Reviewed existing land use information and field verified any areas of question.

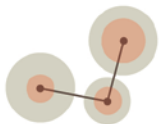
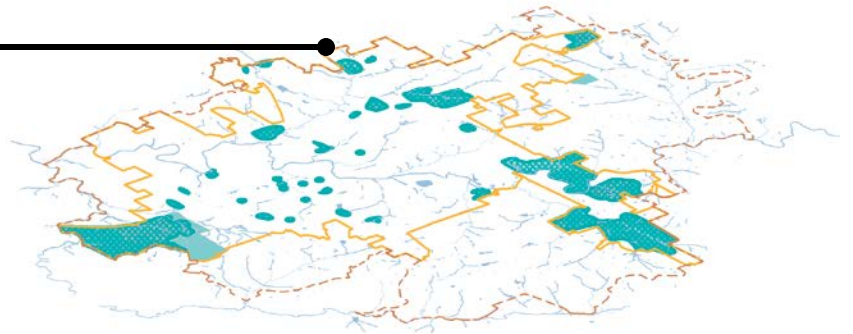


KNOWN DEVELOPMENTS

Mapped known development agreements.

Documented proposed number of units, building square footage, densities and FAR.

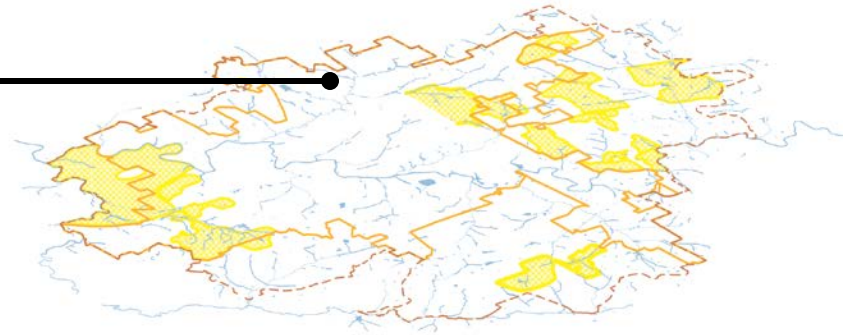
Cross referenced information with current and past City Development Reports.



POPULATION AND EMPLOYMENT

AREAS OF CHANGE

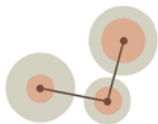
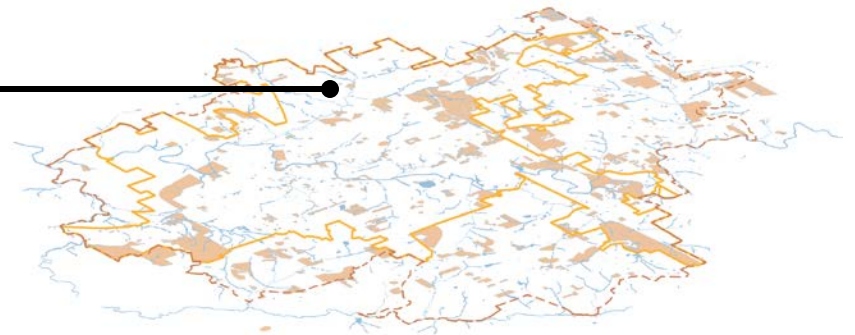
Using feedback from work sessions with planning and engineering staff, major areas of change were mapped and appropriate densities were applied.



VACANT PARCELS

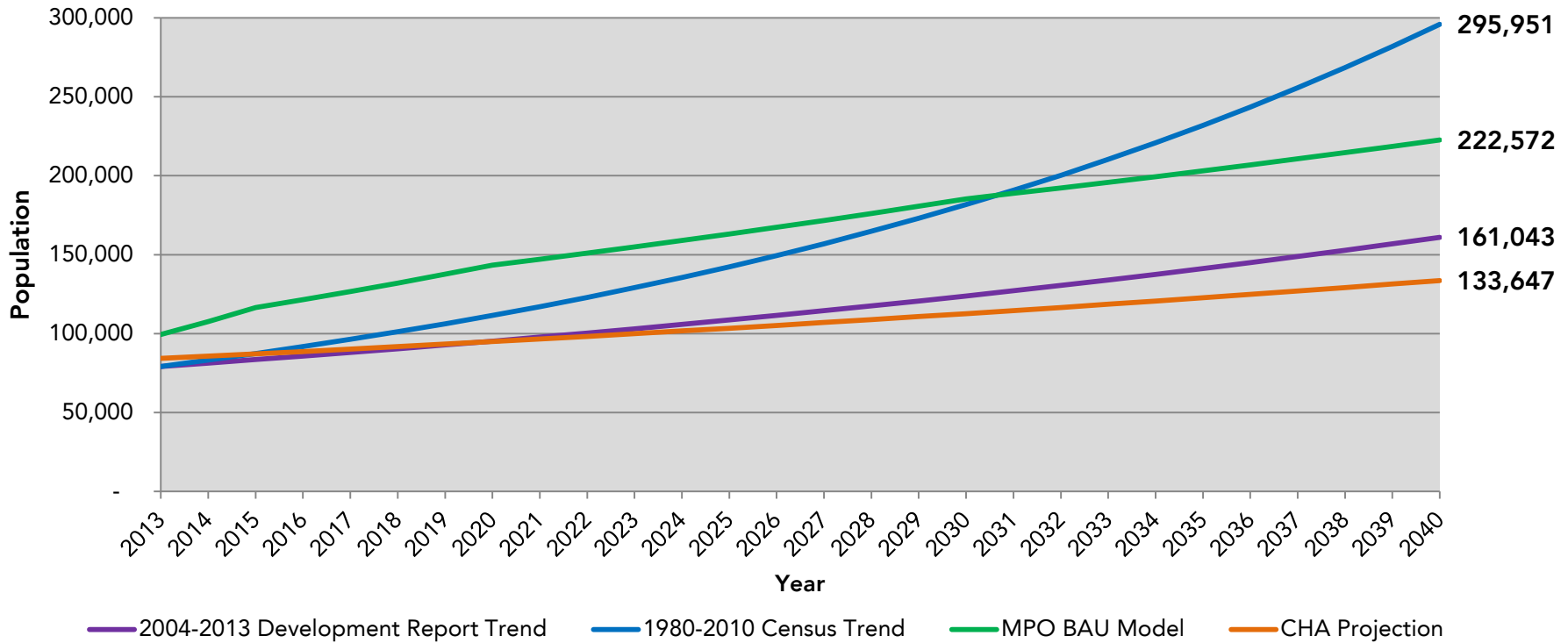
Identified all vacant parcels using City GIS information.

Assigned future land use to identified parcels based on existing zoning, surrounding uses, context, development feasibility, access and visibility.

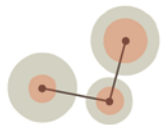


POPULATION AND EMPLOYMENT

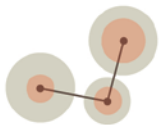
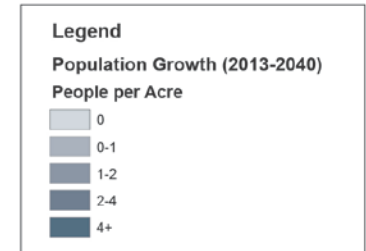
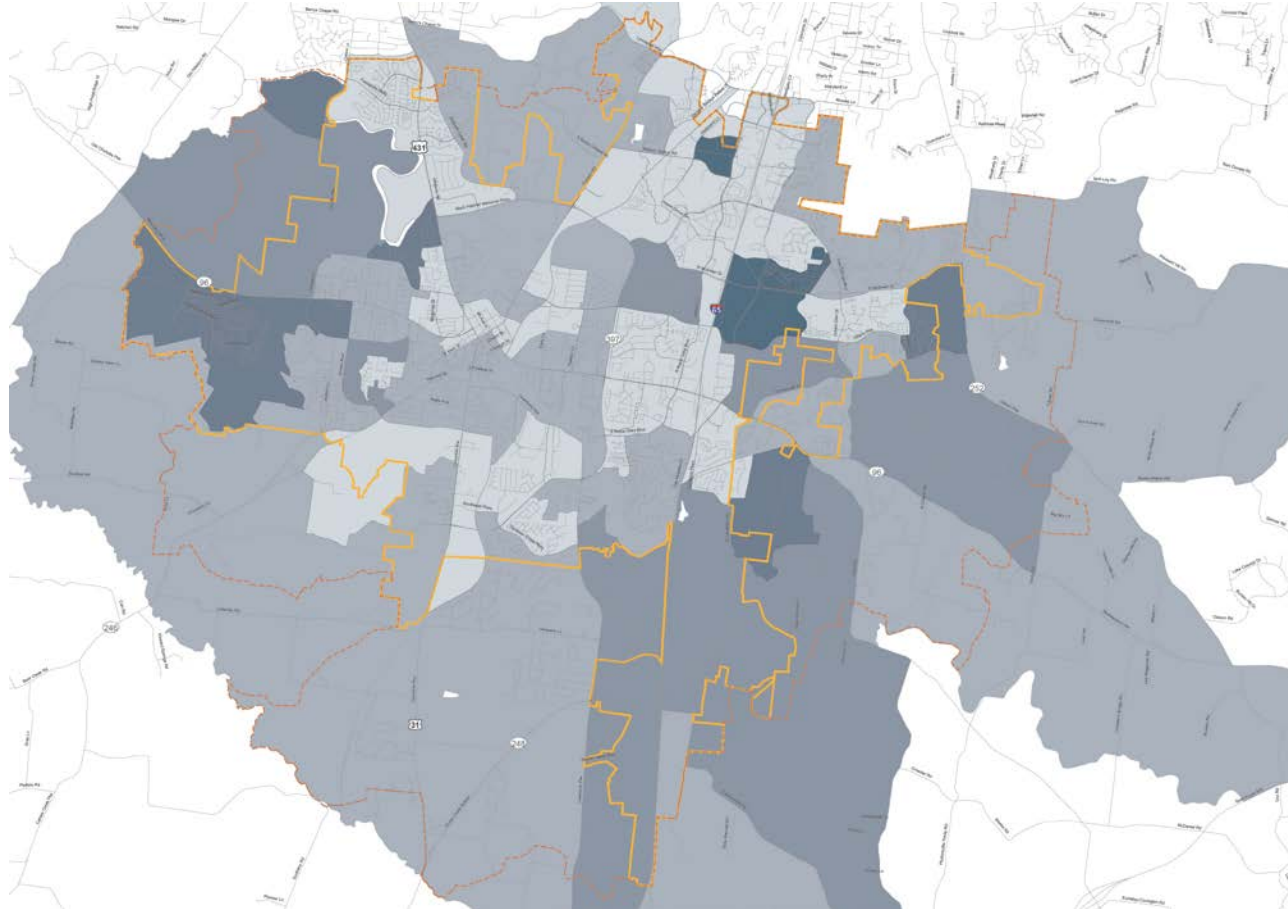
Population Projection (2013-2040)



Note: For the MPO Model and CHA Projection, if a portion of a TAZ was within the UGB, the entire TAZ was included. Subsequently, these projections include some areas outside of the UGB.

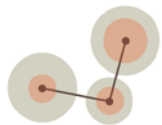
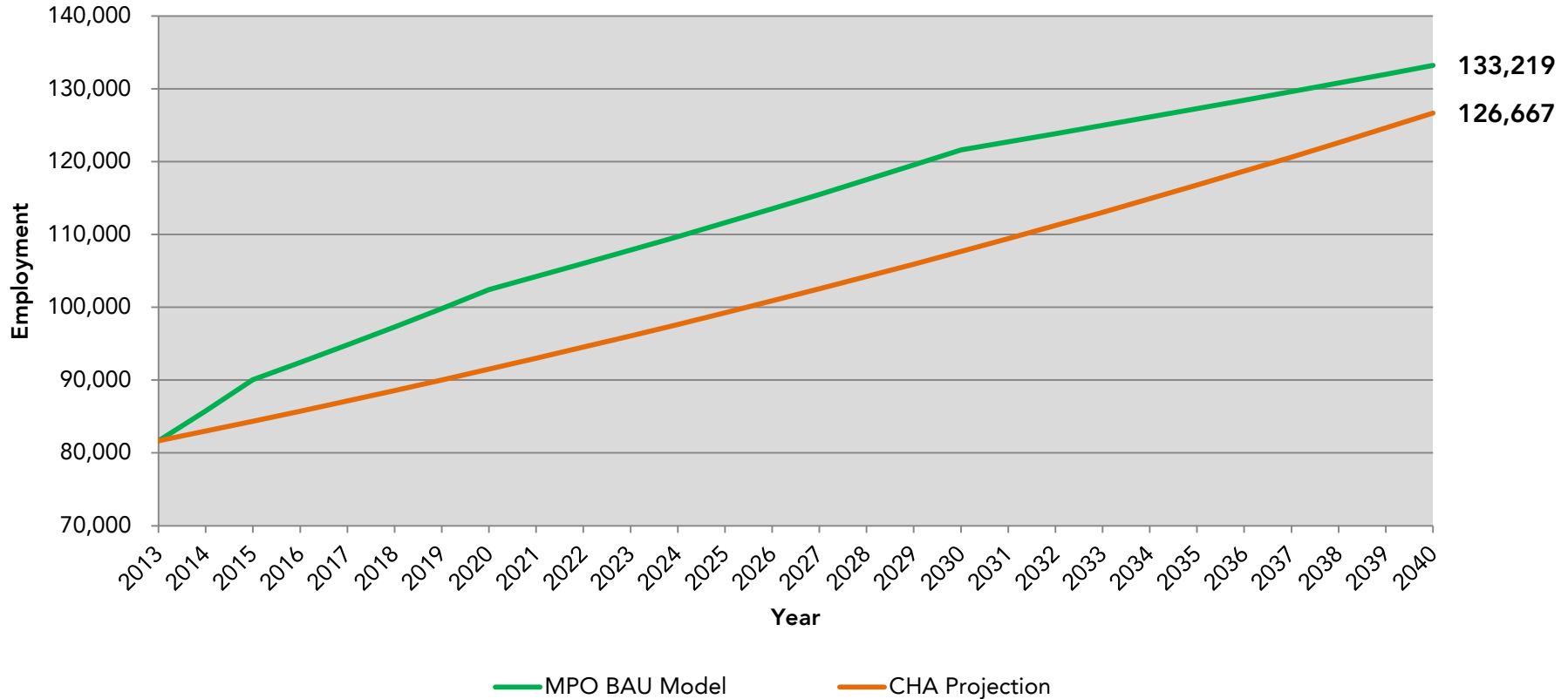


POPULATION GROWTH PEOPLE PER ACRE

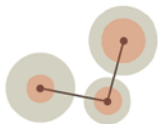
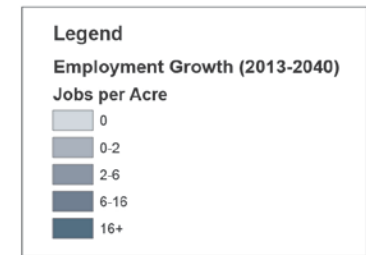
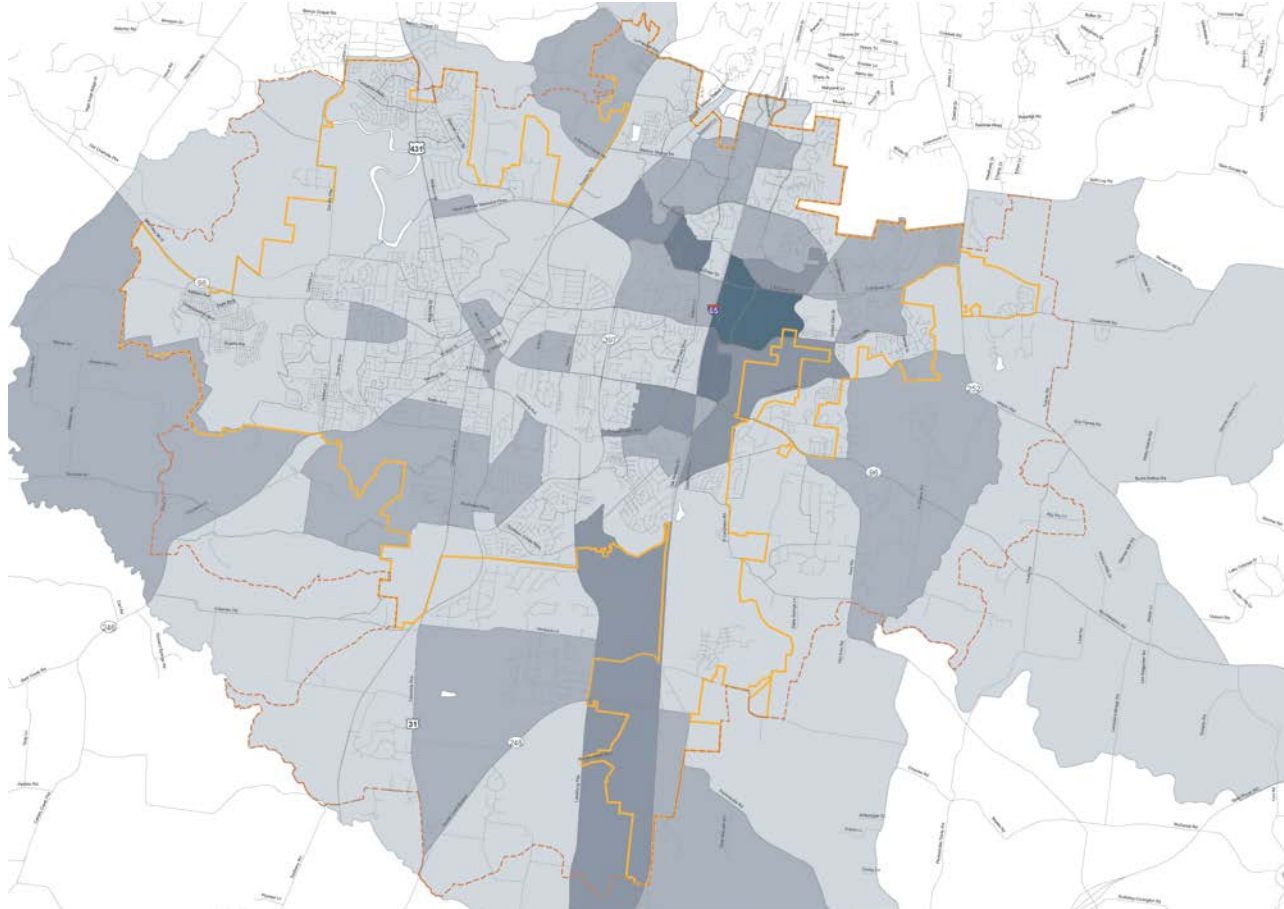


POPULATION AND EMPLOYMENT

Employment Projection (2013-2040)



EMPLOYMENT GROWTH JOBS PER ACRE



PROJECT OVERVIEW

1

FUTURE POPULATION AND EMPLOYMENT

- Information gathering
- Land use and development discussions
- Population forecasting
- Employment forecasting
- Finalize projections

2

TRANSPORTATION INFRASTRUCTURE

- Traffic demand model
- Local roadway studies
- Transportation infrastructure recommendations
- Neighborhood connectivity
- Corridor cross sections

3

MULTI-MODAL AND TRANSIT

- Bicycle and pedestrian facilities
- Greenway plan
- Transit recommendations

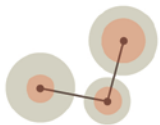
4

PROJECTS AND IMPLEMENTATION

- Project identification
- Project prioritization
- Cost calculations

PUBLIC OUTREACH

- BOMA Stakeholder meetings
- BOMA Project Update meeting
- Public information meeting #1



PUBLIC OPEN HOUSE

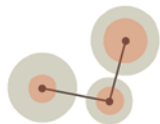
Wednesday, October 22, 2014, 6:00 pm to 8:00pm

City Hall Board Room

Major topics will include:

- Purpose of the plan
- Land use and employment projections
- Transportation improvements and areas of concern
- Multi-modal connections
- Transportation facility preferences
- Corridor amenities and configuration

Meeting materials will include informational boards and facilitated exercises



CONNECT FRANKLIN A COMPREHENSIVE TRANSPORTATION PLAN
CITY OF FRANKLIN, TENNESSEE



HISTORIC
FRANKLIN
TENNESSEE



CONNECT FRANKLIN

A Comprehensive Transportation Plan

OCTOBER 14, 2014

