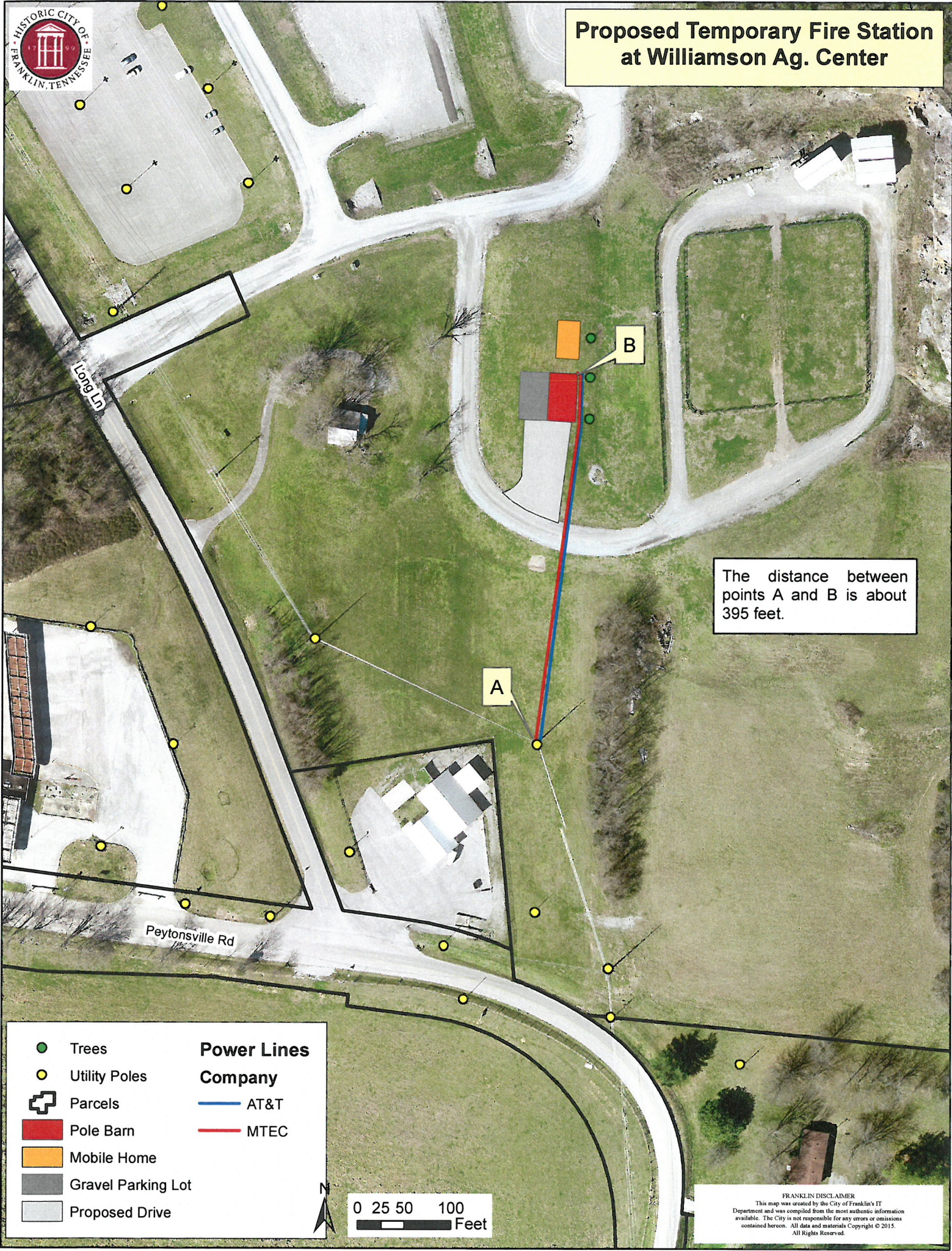


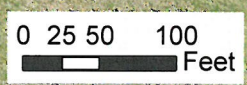


# Proposed Temporary Fire Station at Williamson Ag. Center



The distance between points A and B is about 395 feet.

	Trees	<b>Power Lines</b>
	Utility Poles	<b>Company</b>
	Parcels	
	Pole Barn	
	Mobile Home	
	Gravel Parking Lot	
	Proposed Drive	



**FRANKLIN DISCLAIMER**  
This map was created by the City of Franklin's IT Department and was compiled from the most authentic information available. The City is not responsible for any errors or omissions contained hereon. All data and materials Copyright © 2015. All Rights Reserved.