

OVATION

Subdivision SD-X District

Pattern Book

September 04, 2014
City of Franklin, Tennessee

tree cover map




MCEWEN DRIVE

CAROTHERS PARKWAY

TVA OVERHEAD UTILITY EASEMENT

TURNING WHEEL LANE

 = EXISTING TREE COVER: 33.28 AC (43.4%)
REQUIRED TREE CANOPY PRESERVATION: 7.3 AC (22%)
PROVIDED TREE CANOPY PRESERVATION: 17.6 AC (52.8%)

ALL RENDERINGS ARE CONCEPTUAL IN NATURE AND ARE SUBJECT TO REVISION.

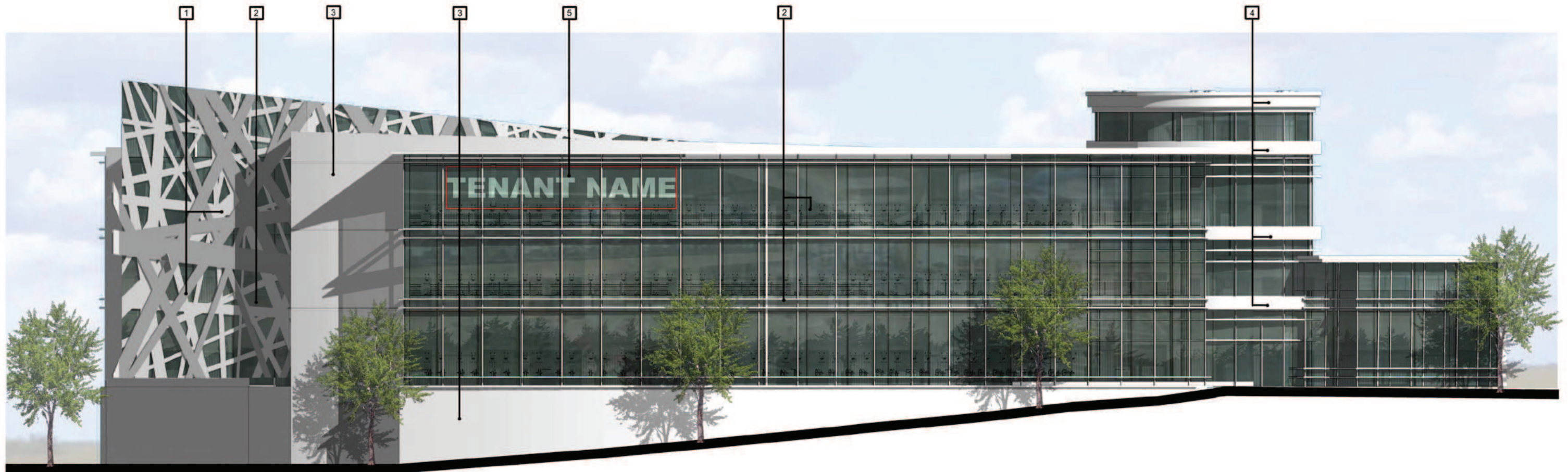
PROPOSED MX/SD-X DISTRICT WITH PUD OVERLAY

OVATION

Franklin, Williamson County, Tennessee

MARCH 6, 2014

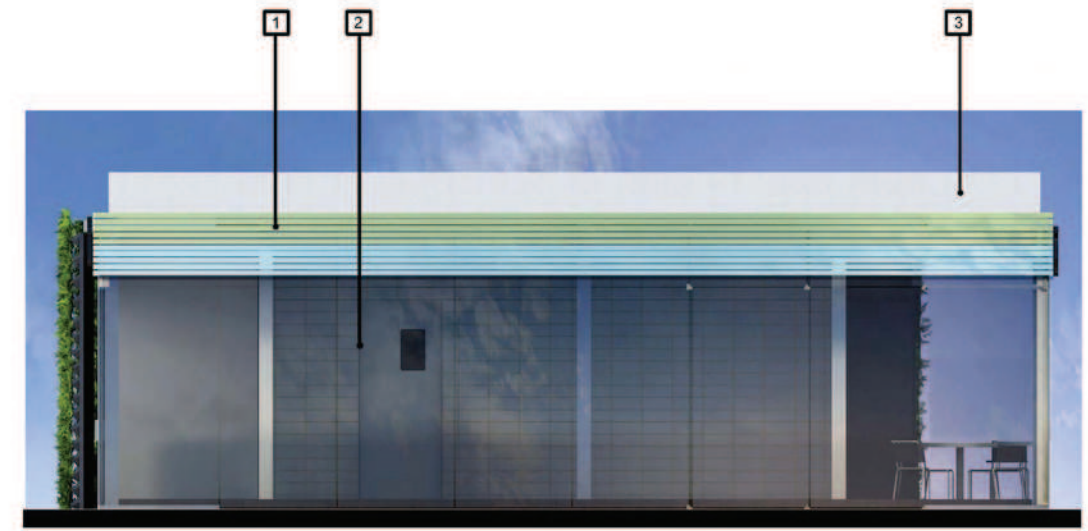
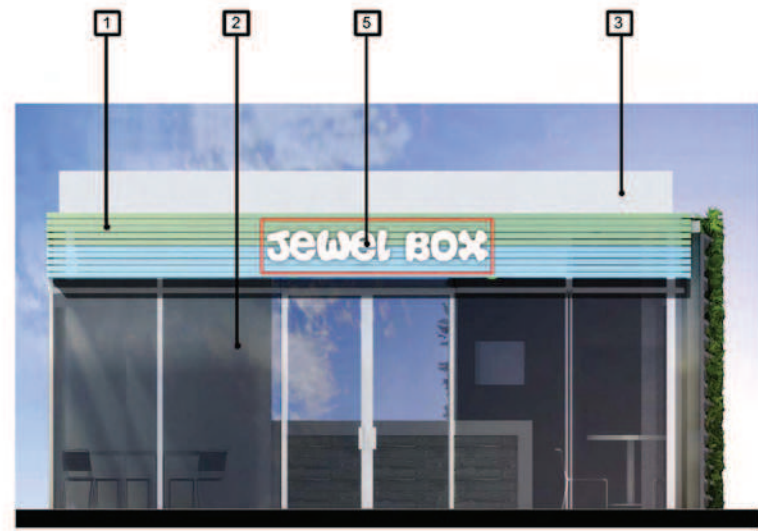
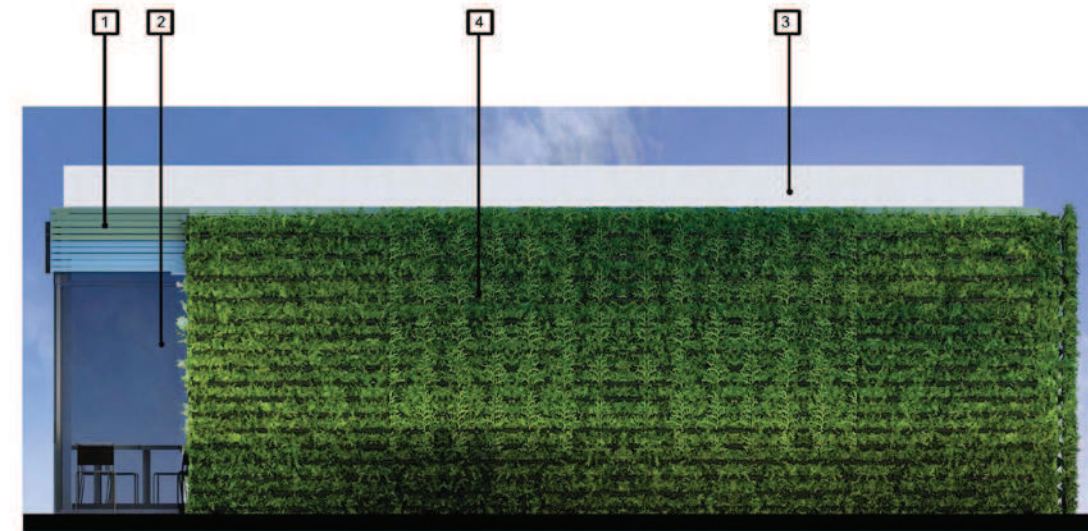
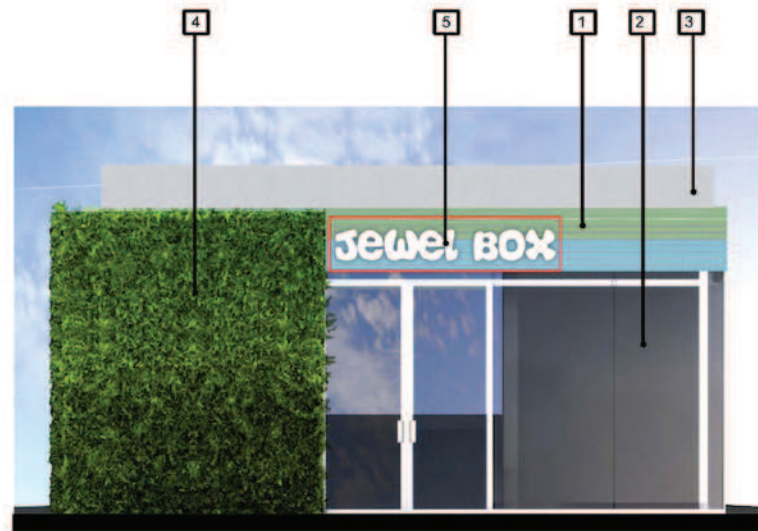




TYPICAL MIXED-USE BUILDING

- FINISH SCHEDULE**
1. ALUMINUM CLAD STOREFRONT
 2. ALUMINUM STOREFRONT SYSTEM
 3. STONE/BRICK VENEER
 4. ALUMINUM PANEL SYSTEM
 5. BY TENANT

*Materials and colors indicated on these elevations are intended to be preliminary at this time and shall serve as an indication as to the level of quality the developer strives for, as the project advances. Exact materials and colors are anticipated to be as indicated herein, or very close, but will be further determined as the design process progresses and the exact tenant mix is determined.

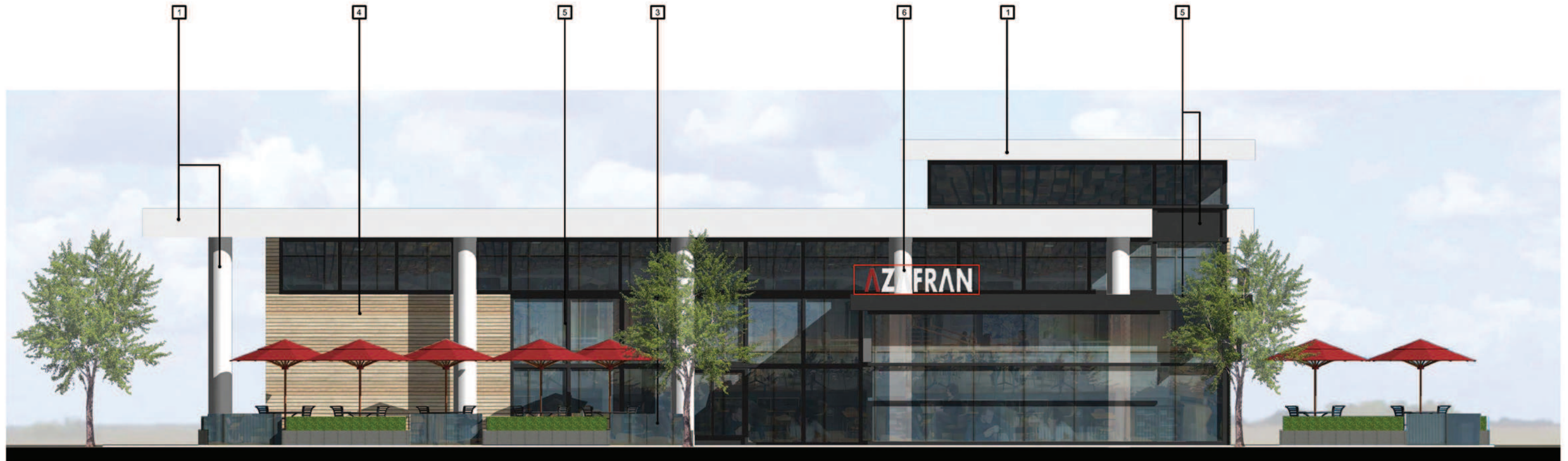


TYPICAL JEWEL BOX BUILDING

FINISH SCHEDULE

- 1. METAL CLADDING
- 2. ALUMINUM STOREFRONT SYSTEM
- 3. EIFS/STUCCO
- 4. GREEN HANGING WALL SYSTEM
- 5. BY TENANT

*Materials and colors indicated on these elevations are intended to be preliminary at this time and shall serve as an indication as to the level of quality the developer strives for, as the project advances. Exact materials and colors are anticipated to be as indicated herein, or very close, but will be further determined as the design process progresses and the exact tenant mix is determined.



TYPICAL OUTPARCEL BUILDING

FINISH SCHEDULE	
1.	ALUMINUM PANEL SYSTEM
2.	STUCCO/EIFS
3.	STONE/BRICK VENEER
4.	WOOD VENEER
5.	ALUMINUM STOREFRONT SYSTEM
6.	BY TENANT

*Materials and colors indicated on these elevations are intended to be preliminary at this time and shall serve as an indication as to the level of quality the developer strives for, as the project advances. Exact materials and colors are anticipated to be as indicated herein, or very close, but will be further determined as the design process progresses and the exact tenant mix is determined.



TYPICAL PARKING DECK

- FINISH SCHEDULE**
- 1. PRECAST CONCRETE
 - 2. ALUMINUM CLAD STRUCTURE

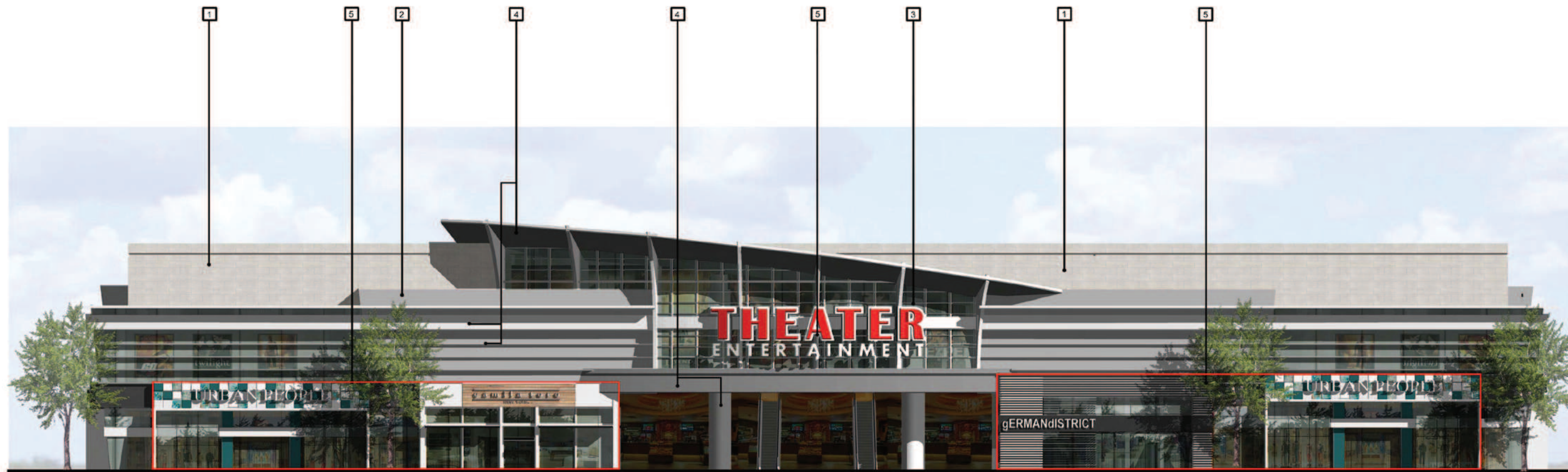




TYPICAL RESIDENTIAL BUILDING

- FINISH SCHEDULE**
1. STONE VENEER
 2. BRICK VENEER
 3. EIFS/STUCCO
 4. GLASS/ALUMINUM RAILING
 5. ALUMINUM PANEL SYSTEM
 6. ALUMINUM STOREFRONT SYSTEM
 7. BY TENANT

*Materials and colors indicated on these elevations are intended to be preliminary at this time and shall serve as an indication as to the level of quality the developer strives for, as the project advances. Exact materials and colors are anticipated to be as indicated herein, or very close, but will be further determined as the design process progresses and the exact tenant mix is determined.



TYPICAL CINEMA/RETAIL BUILDING

FINISH SCHEDULE	
1.	STONE/BRICK VENEER
2.	STUCO/EIFS
3.	ALUMINUM STOREFRONT SYSTEM
4.	ALUMINUM PANEL SYSTEM
5.	BY TENANT

*Materials and colors indicated on these elevations are intended to be preliminary at this time and shall serve as an indication as to the level of quality the developer strives for, as the project advances. Exact materials and colors are anticipated to be as indicated herein, or very close, but will be further determined as the design process progresses and the exact tenant mix is determined.



OUTPARCEL BUILDING A3

FINISH SCHEDULE	
1.	METAL CLADDING
2.	ALUMINUM STOREFRONT SYSTEM
3.	CAST STONE
4.	EFIS
5.	METAL CANOPY
6.	BY TENANT

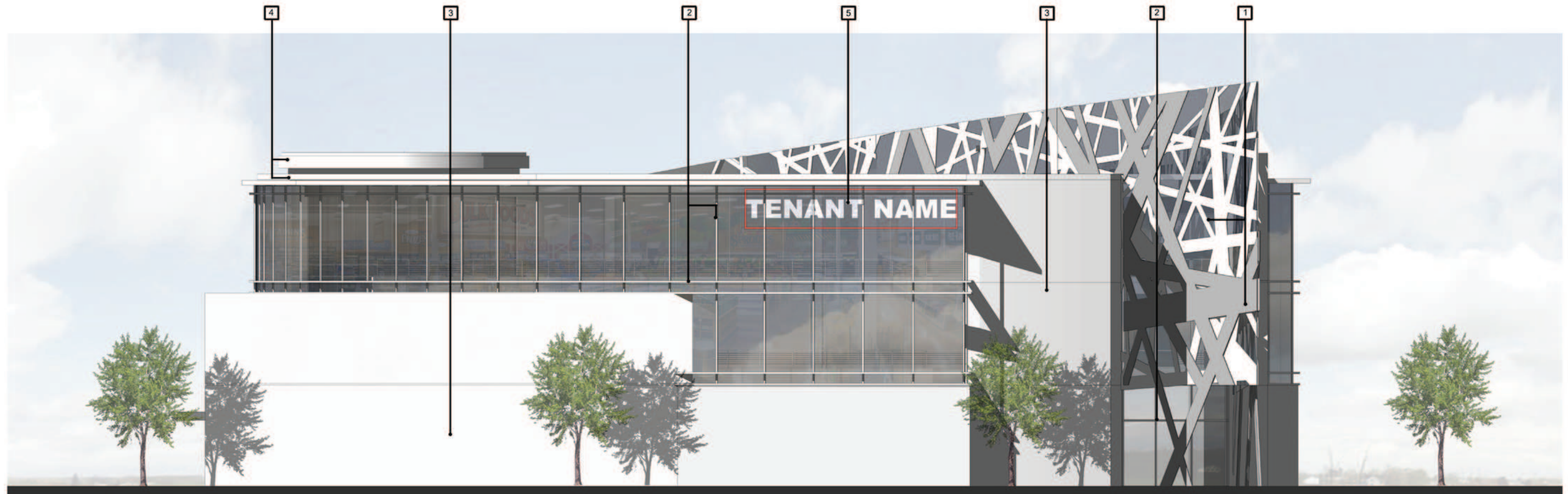
*Materials and colors indicated on these elevations are intended to be preliminary at this time and shall serve as an indication as to the level of quality the developer strives for, as the project advances. Exact materials and colors are anticipated to be as indicated herein, or very close, but will be further determined as the design process progresses and the exact tenant mix is determined.



OUTPARCEL BUILDING C2

FINISH SCHEDULE	
1.	METAL CANOPY
2.	ALUMINUM STOREFRONT SYSTEM
3.	STONE VENEER
4.	ALUMINUM PANEL SYSTEM
5.	BY TENANT

*Materials and colors indicated on these elevations are intended to be preliminary at this time and shall serve as an indication as to the level of quality the developer strives for, as the project advances. Exact materials and colors are anticipated to be as indicated herein, or very close, but will be further determined as the design process progresses and the exact tenant mix is determined.



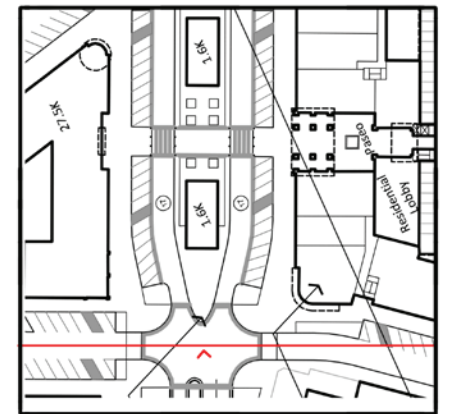
ORGANIC GROCERY BUILDING

FINISH SCHEDULE	
1.	ALUMINUM CLAD STOREFRONT
2.	ALUMINUM STOREFRONT SYSTEM
3.	STONE/BRICK VENEER
4.	ALUMINUM PANEL SYSTEM
5.	BY TENANT

*Materials and colors indicated on these elevations are intended to be preliminary at this time and shall serve as an indication as to the level of quality the developer strives for, as the project advances. Exact materials and colors are anticipated to be as indicated herein, or very close, but will be further determined as the design process progresses and the exact tenant mix is determined.



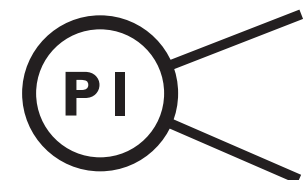
STREET CROSS SECTION





SOUTHSTAR 

OVATION

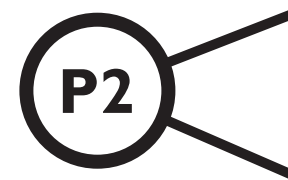


WAKEFIELD
BEASLEY &
ASSOCIATES



SOUTHSTAR 

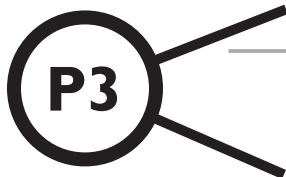
OVATION



**WAKEFIELD
BEASLEY &
ASSOCIATES**



bristol
development group



February 17, 2014

OVATION
Franklin, TN

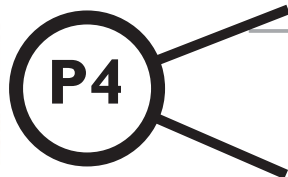
SGS #: 13042.00



SMITH GEE STUDIO, LLC
209 10th Avenue South • Suite 425
Nashville, Tennessee 37203
p: 615.739.5555 • f: 615.739.5582
www.smithgeestudio.com



bristol
development group



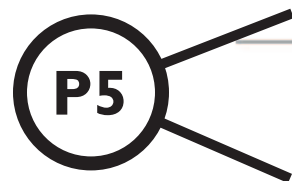
February 17, 2014

OVATION
Franklin, TN

SGS #: 13042.00



SMITH GEE STUDIO, LLC
209 10th Avenue South • Suite 425
Nashville, Tennessee 37203
p: 615.739.5555 • f: 615.739.5582
www.smithgeestudio.com



January 24, 2014

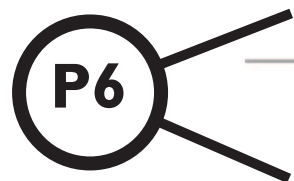
OVATION

Franklin, TN

SGS #: 14010.00



SMITH GEE STUDIO, LLC
209 10th Avenue South • Suite 425
Nashville, Tennessee 37203
p: 615.739.5555 • f: 615.739.5582
www.smithgeestudio.com



January 24, 2014

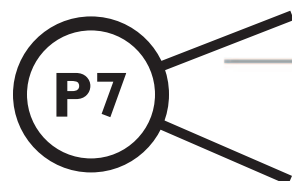
OVATION

Franklin, TN

SGS #: 14010.00



SMITH GEE STUDIO, LLC
209 10th Avenue South • Suite 425
Nashville, Tennessee 37203
p: 615.739.5555 • f: 615.739.5582
www.smithgeestudio.com



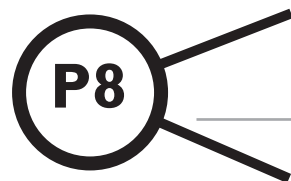
January 24, 2014

OVATION
Franklin, TN

SGS #: 14010.00



SMITH GEE STUDIO, LLC
209 10th Avenue South • Suite 425
Nashville, Tennessee 37203
p: 615.739.5555 • f: 615.739.5582
www.smithgeestudio.com



MULTI-FAMILY REPRESENTATIVE ARCHITECTURAL CHARACTER IMAGES

OVATION
Franklin, TN

SGS #13011.00



SMITH GEE STUDIO, LLC
209 10th Avenue South • Suite 425
Nashville, Tennessee 37203
p: 615.739.5555 • f: 615.739.5582
www.smithgeestudio.com

copyright 2013 Smith Gee Studio, LLC. All rights reserved.