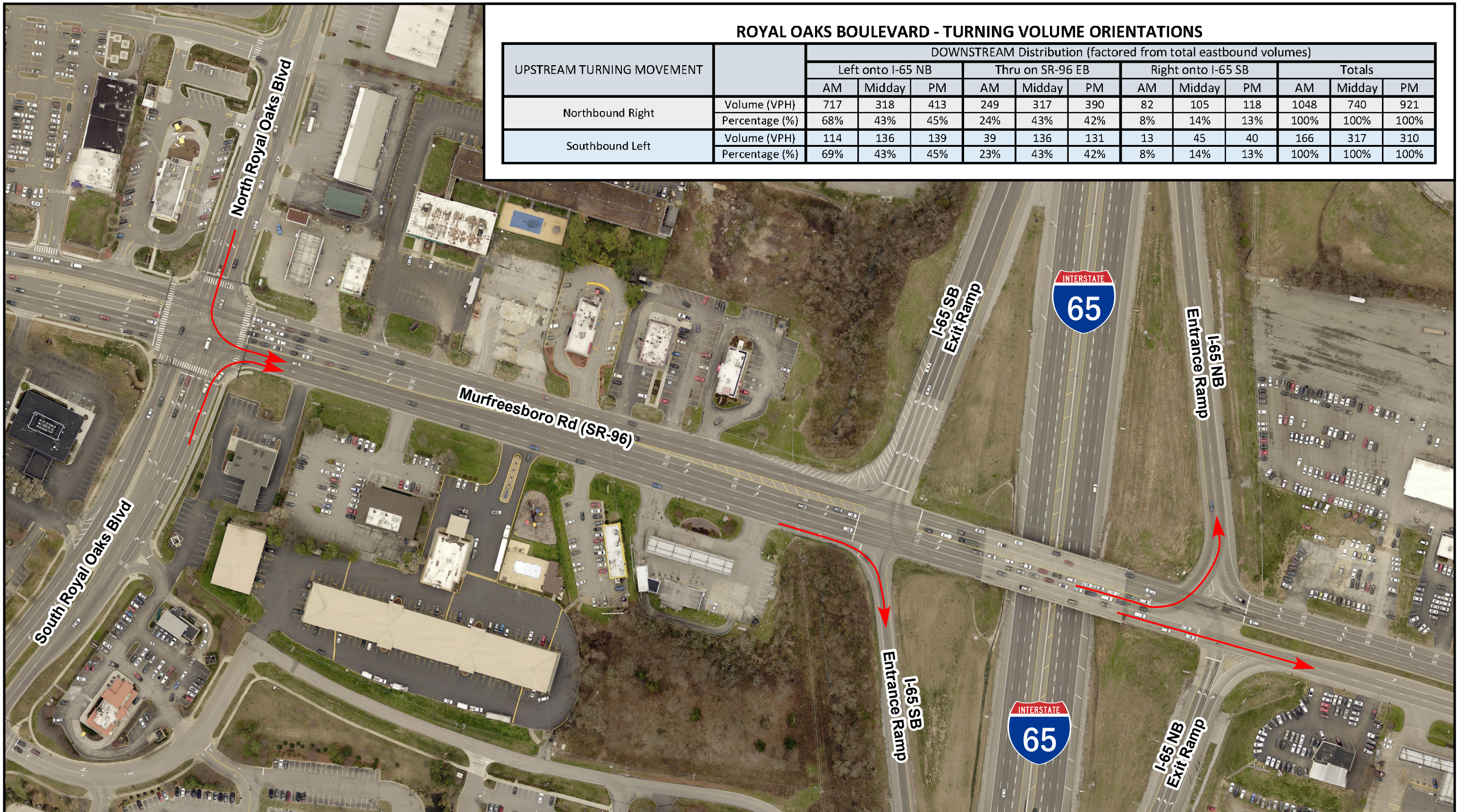


ROYAL OAKS BOULEVARD - TURNING VOLUME ORIENTATIONS

UPSTREAM TURNING MOVEMENT		DOWNSTREAM Distribution (factored from total eastbound volumes)											
		Left onto I-65 NB			Thru on SR-96 EB			Right onto I-65 SB			Totals		
		AM	Midday	PM	AM	Midday	PM	AM	Midday	PM	AM	Midday	PM
Northbound Right	Volume (VPH)	717	318	413	249	317	390	82	105	118	1048	740	921
	Percentage (%)	68%	43%	45%	24%	43%	42%	8%	14%	13%	100%	100%	100%
Southbound Left	Volume (VPH)	114	136	139	39	136	131	13	45	40	166	317	310
	Percentage (%)	69%	43%	45%	23%	43%	42%	8%	14%	13%	100%	100%	100%



1 inch = 150 feet



LOCATION MAP

ROYAL OAKS BOULEVARD TURNING MOVEMENTS

DISCLAIMER

THIS MAP WAS CREATED BY THE CITY OF FRANKLIN ENGINEERING DEPARTMENT AND WAS COMPILED FROM THE MOST AUTHENTIC INFORMATION AVAILABLE. THE CITY IS NOT RESPONSIBLE FOR ANY ERRORS OR OMISSIONS CONTAINED HEREON. ALL DATA AND MATERIALS © COPYRIGHT 2015, CITY OF FRANKLIN, TN. ALL RIGHTS RESERVED.

