

ENGINEER'S OPINION OF PROBABLE COST

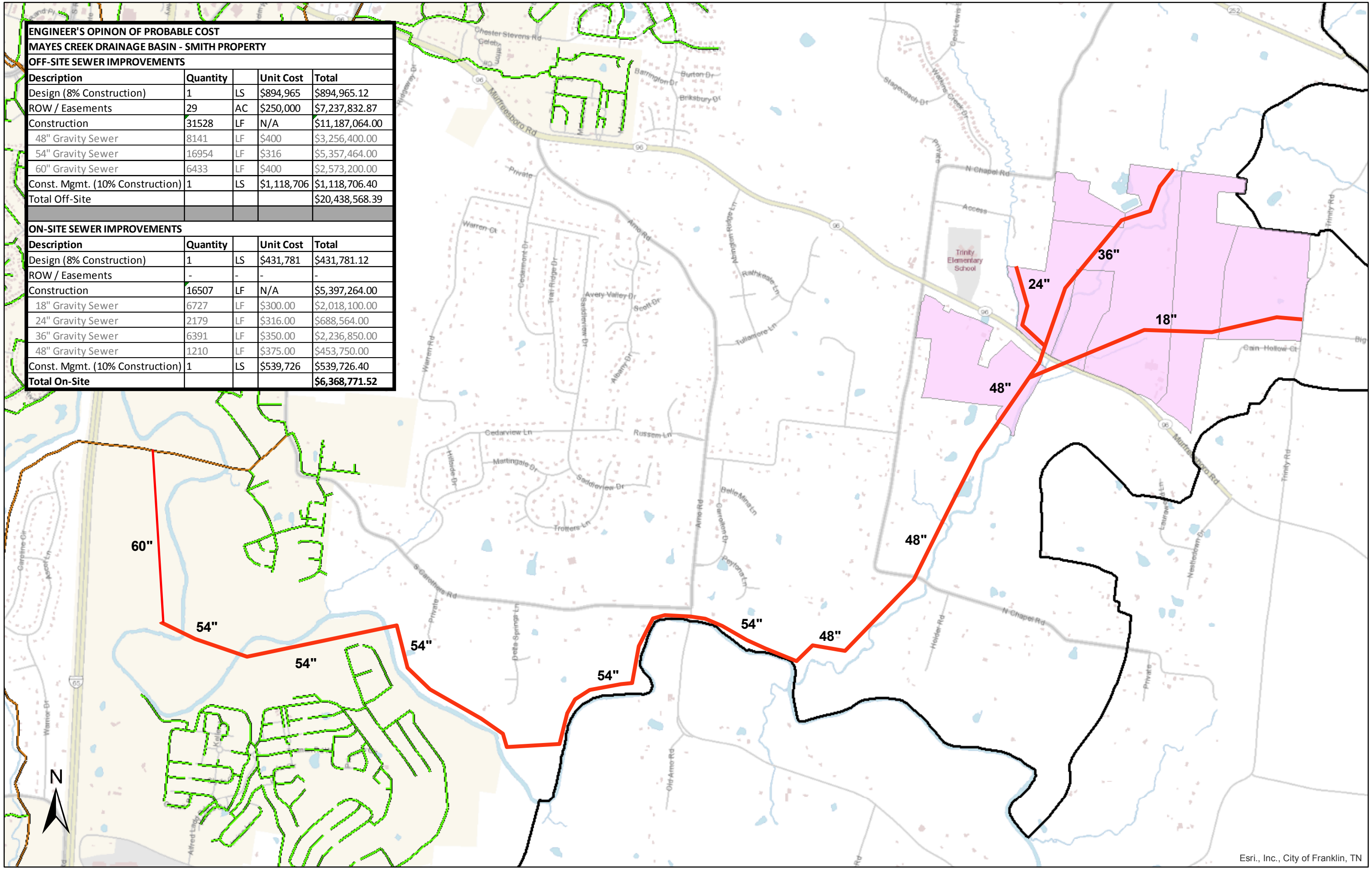
MAYES CREEK DRAINAGE BASIN - SMITH PROPERTY

OFF-SITE SEWER IMPROVEMENTS

Description	Quantity		Unit Cost	Total
Design (8% Construction)	1	LS	\$894,965	\$894,965.12
ROW / Easements	29	AC	\$250,000	\$7,237,832.87
Construction	31528	LF	N/A	\$11,187,064.00
48" Gravity Sewer	8141	LF	\$400	\$3,256,400.00
54" Gravity Sewer	16954	LF	\$316	\$5,357,464.00
60" Gravity Sewer	6433	LF	\$400	\$2,573,200.00
Const. Mgmt. (10% Construction)	1	LS	\$1,118,706	\$1,118,706.40
Total Off-Site				\$20,438,568.39

ON-SITE SEWER IMPROVEMENTS

Description	Quantity		Unit Cost	Total
Design (8% Construction)	1	LS	\$431,781	\$431,781.12
ROW / Easements	-	-	-	-
Construction	16507	LF	N/A	\$5,397,264.00
18" Gravity Sewer	6727	LF	\$300.00	\$2,018,100.00
24" Gravity Sewer	2179	LF	\$316.00	\$688,564.00
36" Gravity Sewer	6391	LF	\$350.00	\$2,236,850.00
48" Gravity Sewer	1210	LF	\$375.00	\$453,750.00
Const. Mgmt. (10% Construction)	1	LS	\$539,726	\$539,726.40
Total On-Site				\$6,368,771.52



ENGINEER'S OPINION OF PROBABLE COST

MAYES CREEK DRAINAGE BASIN - SMITH PROPERTY

OFF-SITE SEWER IMPROVEMENTS

Description	Quantity		Unit Cost	Total
Design (8% Construction)	1	LS	\$797,028	\$797,027.84
ROW / Easements	29	AC	\$250,000	\$7,237,832.87
Construction	31528	LF	N/A	\$9,962,848.00
24" Gravity Sewer	31528	LF	\$316	\$9,962,848.00
Const. Mgmt. (10% Construction)	1	LS	\$996,285	\$996,284.80
Total Off-Site				\$18,993,993.51

ON-SITE SEWER IMPROVEMENTS

Description	Quantity		Unit Cost	Total
Design (8% Construction)	1	LS	\$304,255	\$304,254.72
ROW / Easements	-	-	-	-
Construction	12376	LF	N/A	\$3,803,184.00
18" Gravity Sewer	6727	LF	\$300.00	\$2,018,100.00
24" Gravity Sewer	5649	LF	\$316.00	\$1,785,084.00
Const. Mgmt. (10% Construction)	1	LS	\$380,318	\$380,318.40
Total On-Site				\$4,487,757.12

