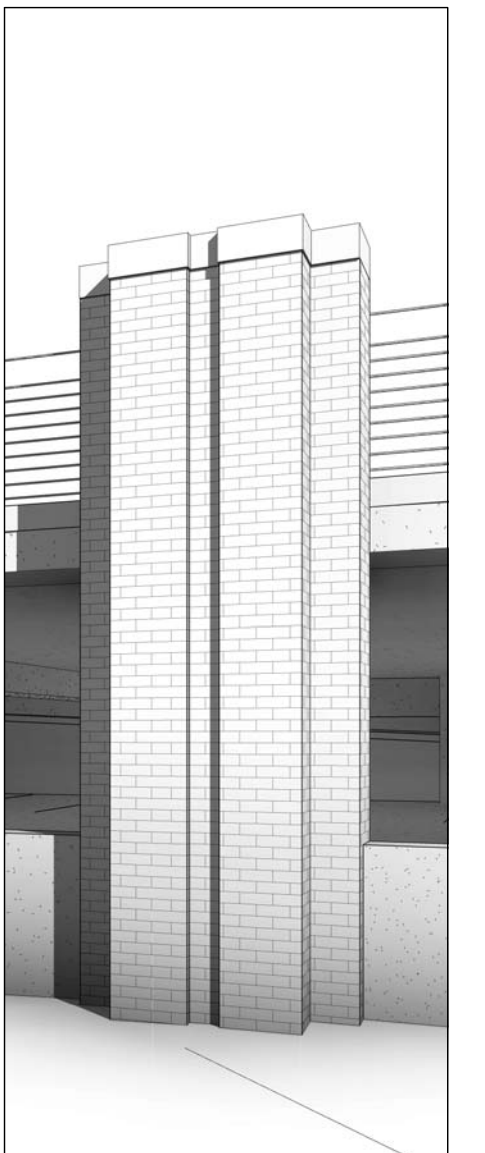




PARKING GARAGE

16010

WILLIAMSON COUNTY
CENTER RELOCATION
SBC# 166/015-01-2012G
COF PROJ# 6755



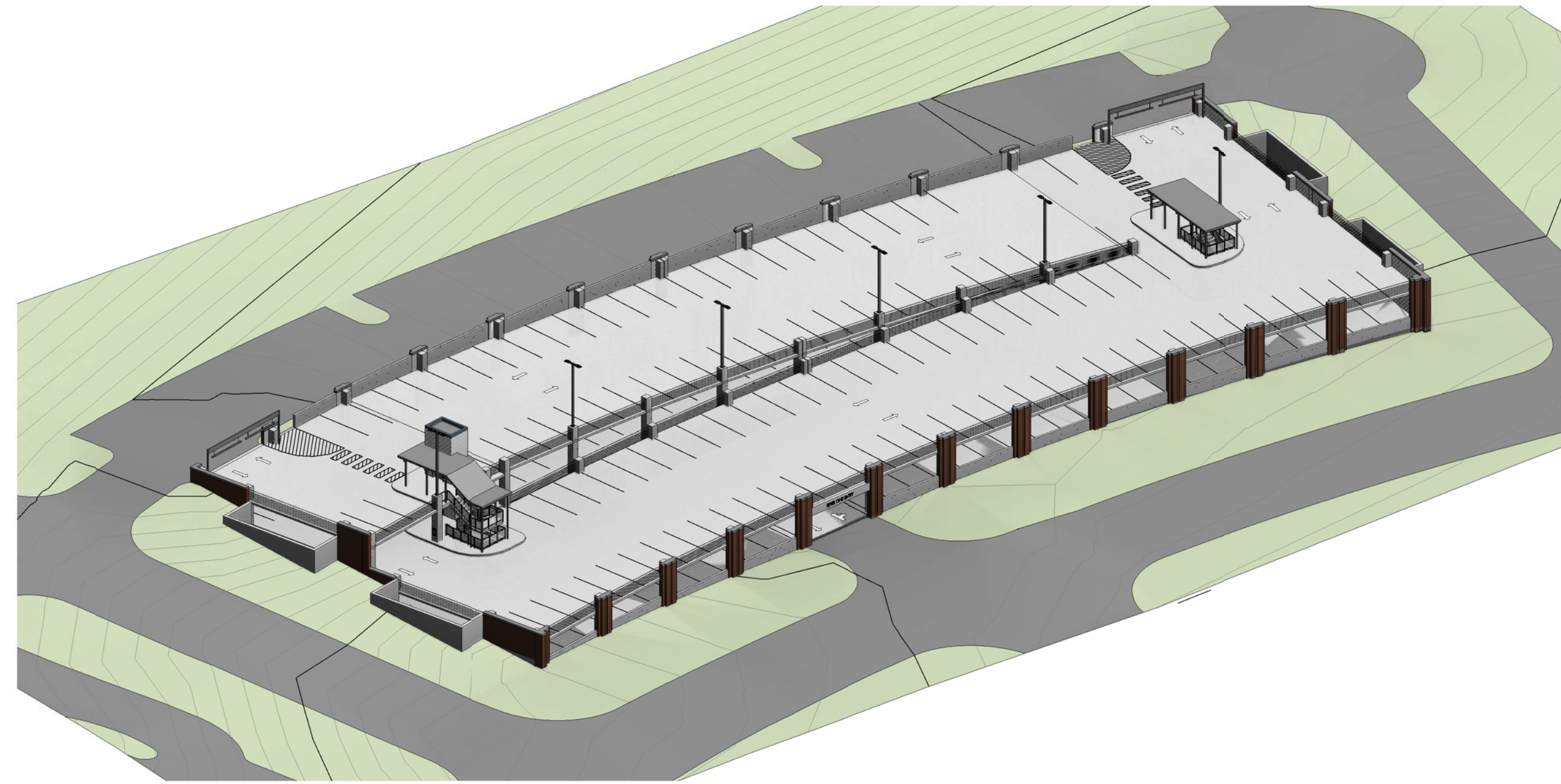
COLUMBIA STATE
COMMUNITY COLLEGE
1228 LIBERTY PIKE
FRANKLIN, TN 37067
REVISION DATE

EXTERIOR VIEWS -
REFERENCE ONLY

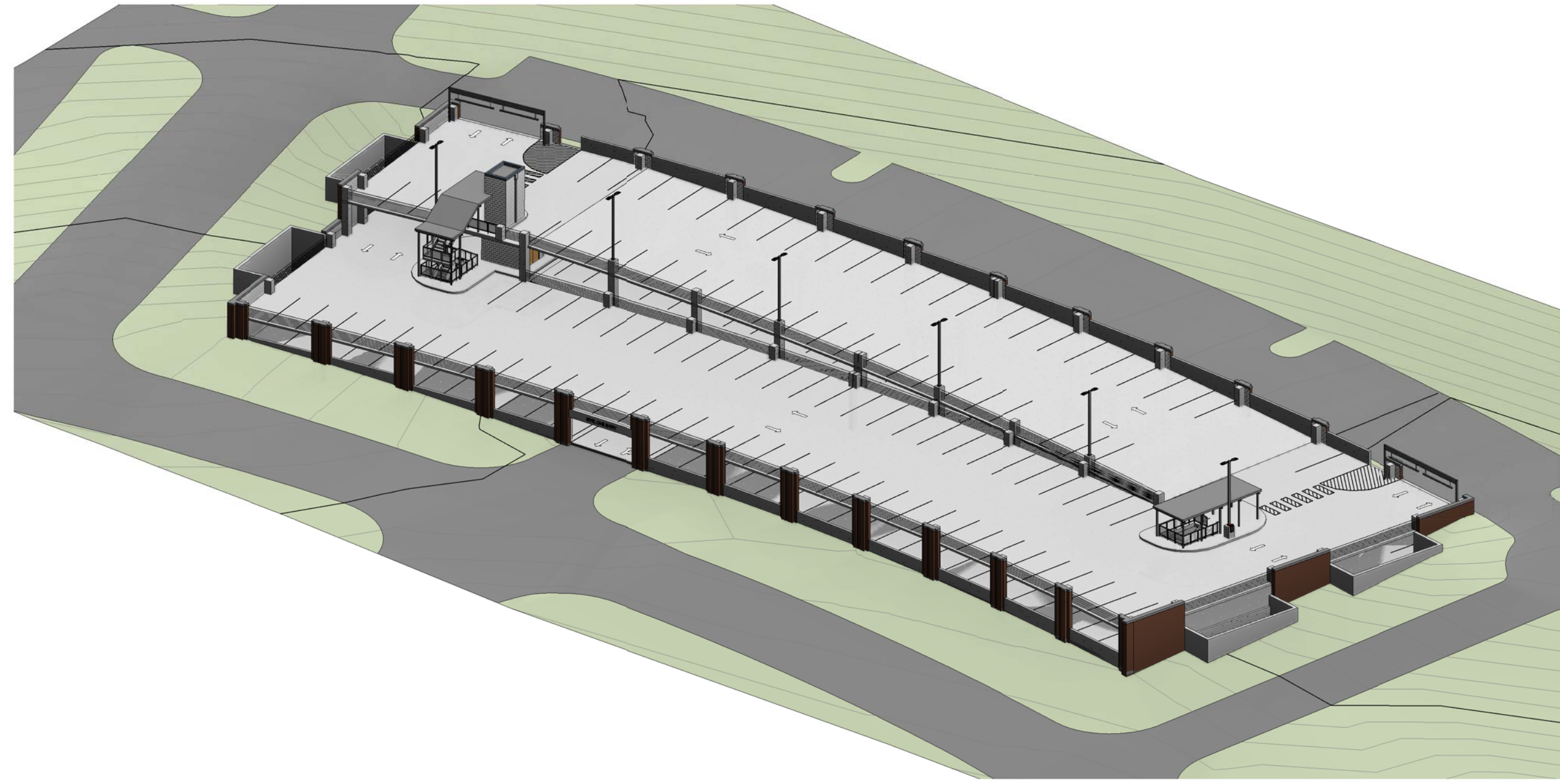
Sheet Number

A3.01

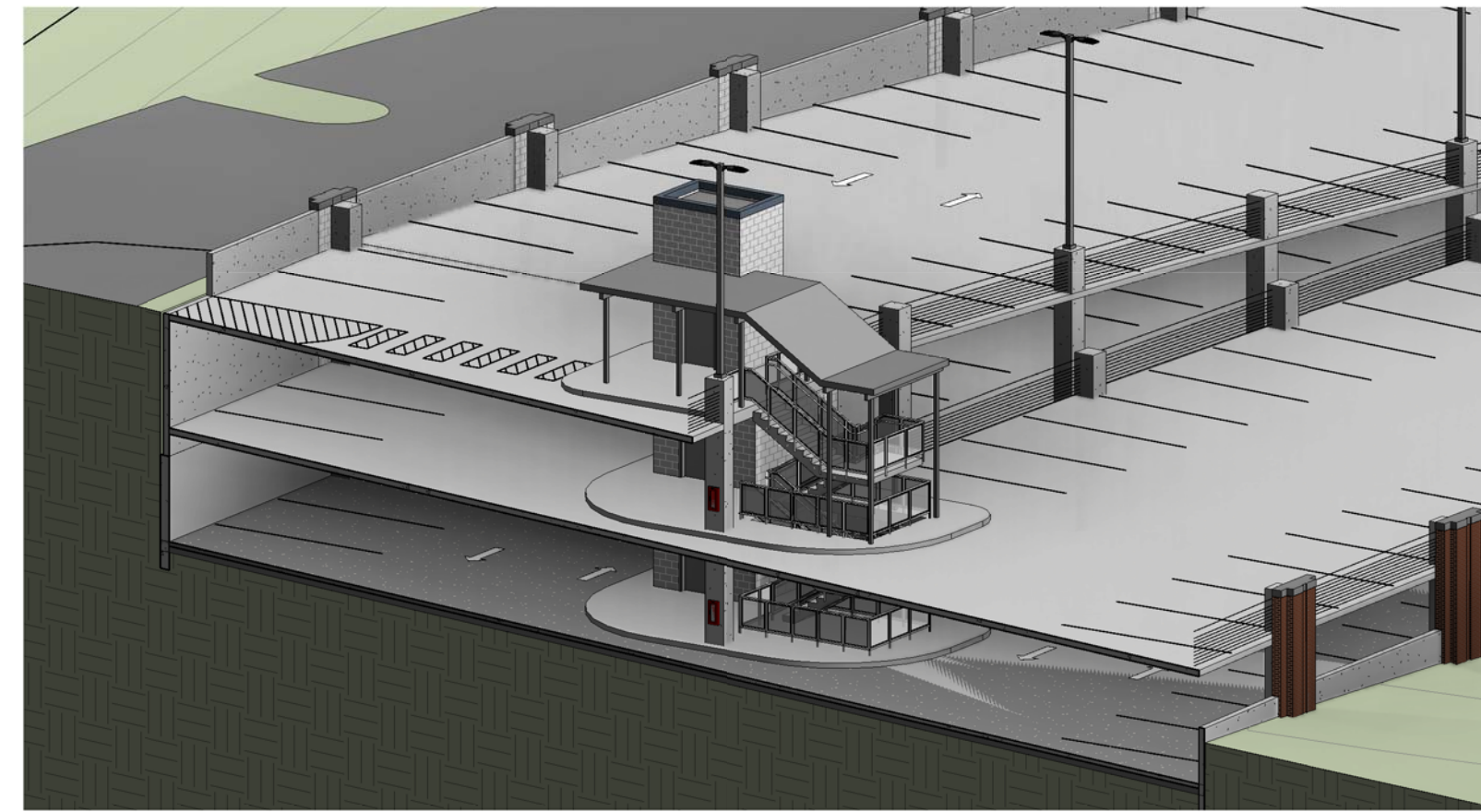
05 JULY 18
COF SITE PLAN SUBMITTAL



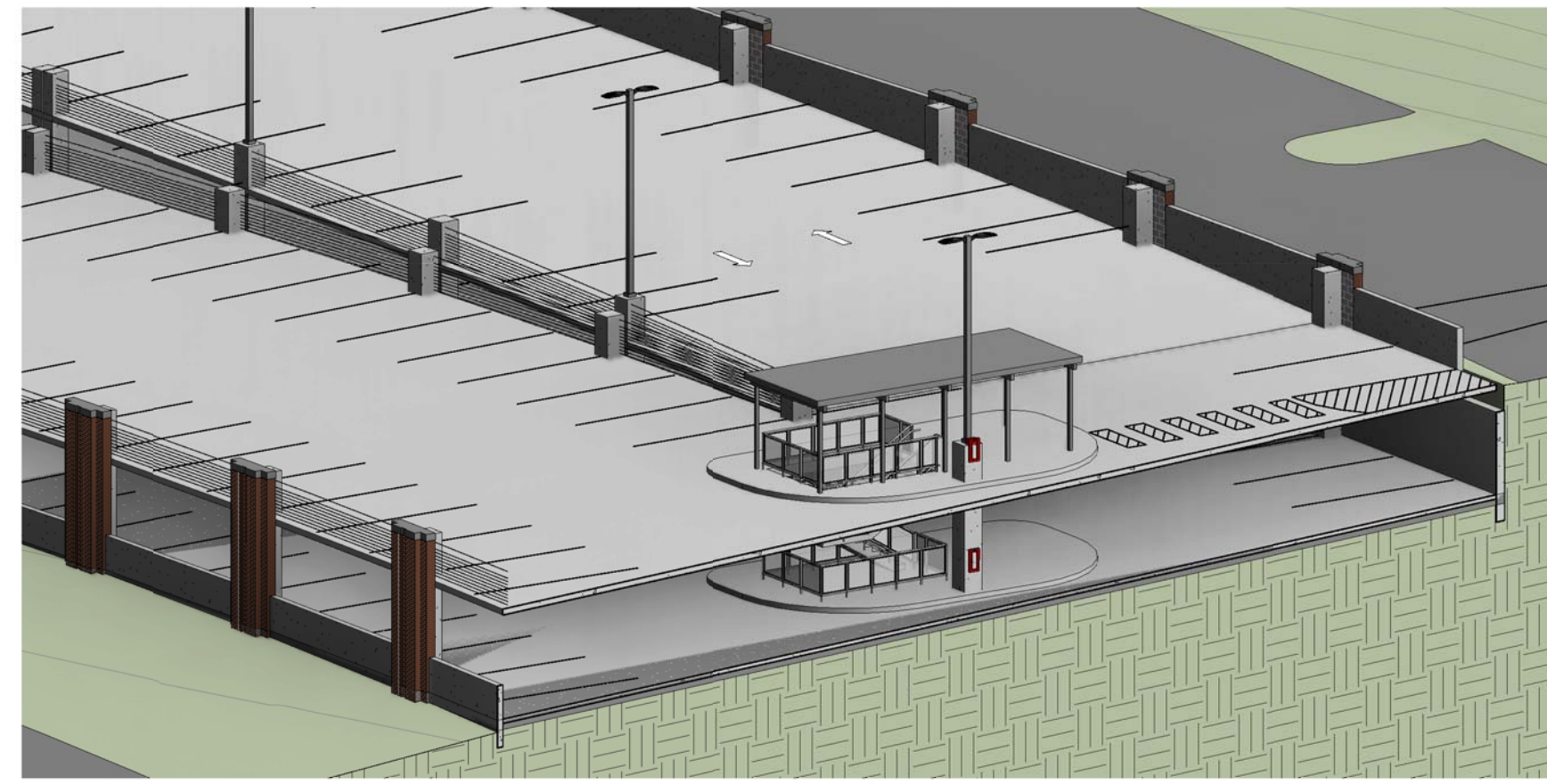
- 01 3D VIEW
NORTHWEST CORNER



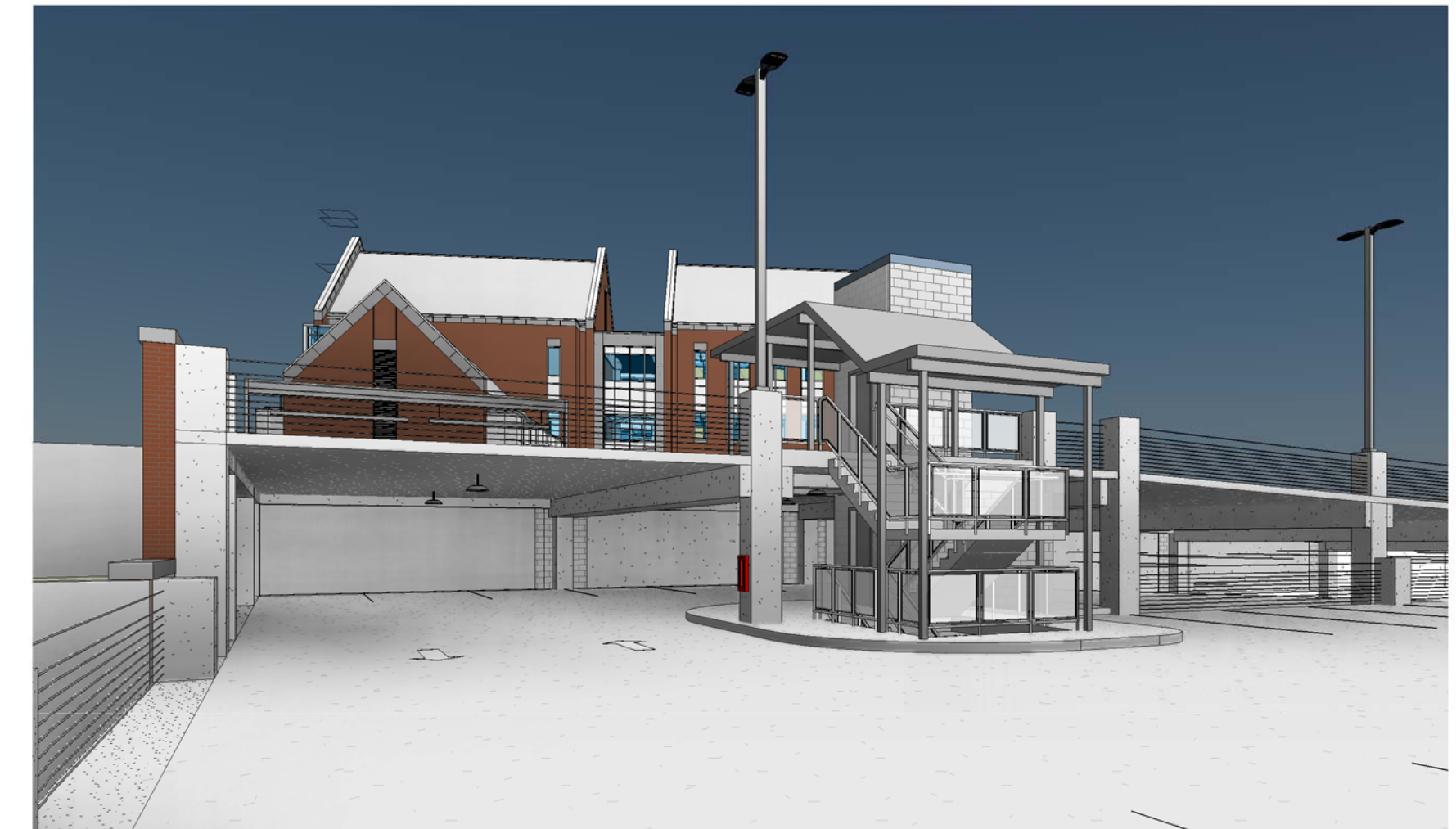
- 02 3D VIEW
SOUTHWEST CORNER



- 03 3D VIEW
NORTH STAIR & ELEVATOR



- 04 3D VIEW
SOUTH STAIR



- 05 3D VIEW
NORTH STAIR FROM SECOND LEVEL



- 06 SITE PLAN
VIEW FROM SE SECOND LEVEL ENTRY

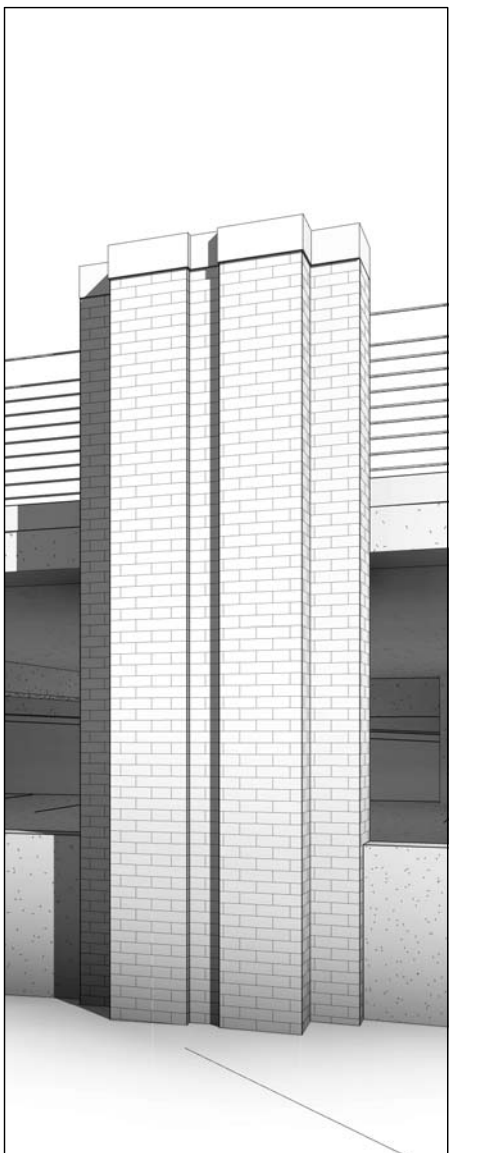


- 07 3D VIEW
VIEW FROM KNOLLTOP LANE



PARKING GARAGE

16010
WILLIAMSON COUNTY
CENTER RELOCATION
SBC# 166/015-01-2012G
COF PROJ# 6755



COLUMBIA STATE
COMMUNITY COLLEGE
1228 LIBERTY PIKE
FRANKLIN, TN 37067
REVISION DATE

EXTERIOR ELEVATIONS

Sheet Number

A3.02

05 JULY 18
COF SITE PLAN SUBMITTAL

**CODED NOTES
EXTERIOR ELEVATIONS**

- 01 STANDARD MODULAR BRICK; RUNNING BOND
- 02 EXTERNAL BARRIER CABLE RAILING SYSTEM
- 03 PREFINISHED METAL CANOPY SYSTEM
- 04 CAST-IN-PLACE ARCHITECTURAL CONCRETE. FORMED CONCRETE THAT IS EXPOSED TO VIEW TO HAVE SPECIFIED ARCHITECTURAL FINISH AND APPEARANCE. REFER TO SPECIFICATIONS.
- 05 STONE CORNICE WITH 12" STAND-OFF SIGNAGE LETTERS. COORDINATE JOINT LAYOUT WITH ARCHITECT PRIOR TO INSTALLATION.
- 06 PREFINISHED METAL COPING; SEE DETAILS FOR DIMENSIONS
- 07 2-HOUR RATED CMU ELEVATOR CORE - REFER TO UL ASSEMBLIES
- 08 CAST-IN-PLACE STRUCTURAL COLUMN. REFER TO STRUCTURAL DRAWINGS
- 09 POLE MOUNTED LIGHT FIXTURE; REFER TO ELECTRICAL DRAWINGS. FIXTURE TO BE REMOVED AND REUSED AT PHASE II BUILD-OUT.
- 10 PAINTED STEEL FRAME WITH SAFETY YELLOW OVERHEAD CLEARANCE BARS AND 12" STAND-OFF SIGNAGE LETTERS. REFER TO DETAILS FOR MOUNTING HEIGHTS.
- 11 FDC CONNECTION - REFER TO FIRE PROTECTION DRAWINGS

COF ELEVATION NOTE

THESE ELEVATIONS HAVE BEEN DESIGNED TO MEET THE REQUIREMENTS OF THE CITY OF FRANKLIN'S ARCHITECTURAL DESIGN STANDARDS AND THE APPROVAL OF THE PLANNING COMMISSION / CITY OF FRANKLIN. CHANGES SHALL NOT BE MADE TO THE APPROVED ELEVATIONS UNLESS APPROVED BY EITHER THE BNS DIRECTOR OR THE PLANNING COMMISSION.

WEST (KNOLLTOP LANE) ELEVATION MATERIAL NOTES

	SURFACE AREA	PERCENT OF NET
GROSS OF WALL	4,687	
NET OF WALL	2,091	
NET BRICK	1,078	52%
NET ARCH. CONCRETE	1,013	48%

EAST ELEVATION MATERIAL NOTES

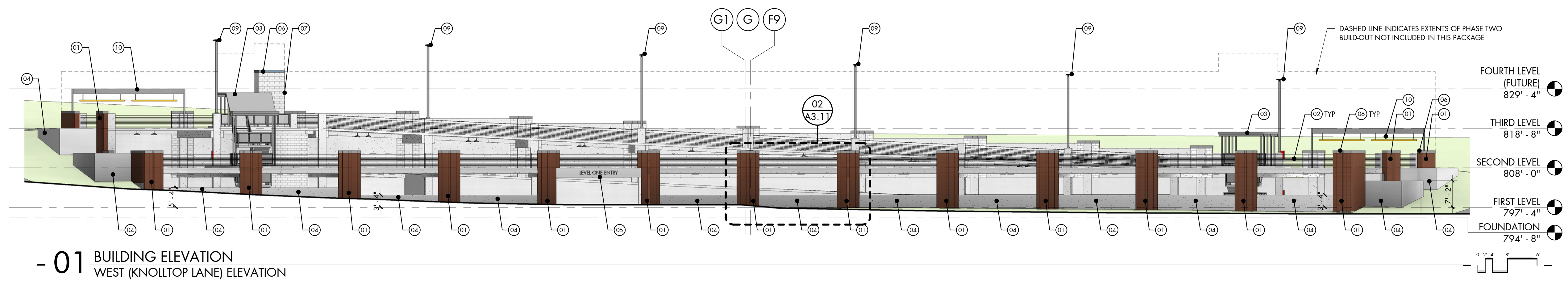
	SURFACE AREA	PERCENT OF NET
GROSS OF WALL	1,927	
NET OF WALL	1,638	
NET BRICK	441	27%
NET ARCH. CONCRETE	1,197	73%

NORTH ELEVATION MATERIAL NOTES

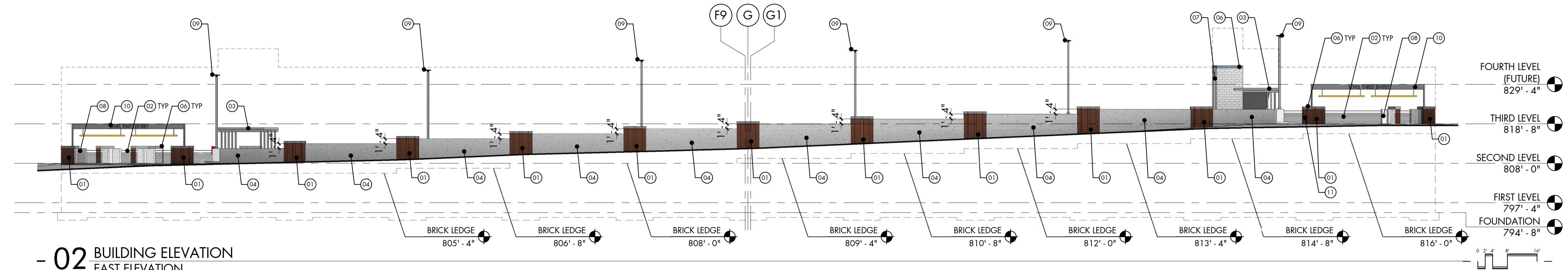
	SURFACE AREA	PERCENT OF NET
GROSS OF WALL	944	
NET OF WALL	770	
NET BRICK	456	59%
NET ARCH. CONCRETE	314	41%

SOUTH ELEVATION MATERIAL NOTES

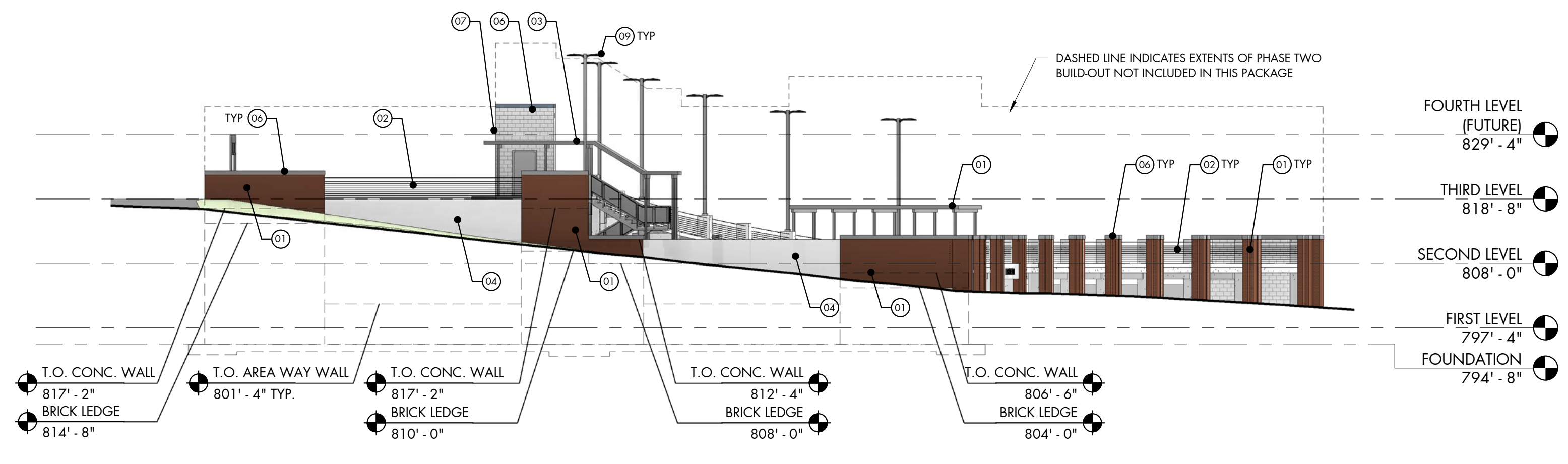
	SURFACE AREA	PERCENT OF NET
GROSS OF WALL	1,397	
NET OF WALL	1,027	
NET BRICK	674	66%
NET ARCH. CONCRETE	353	34%



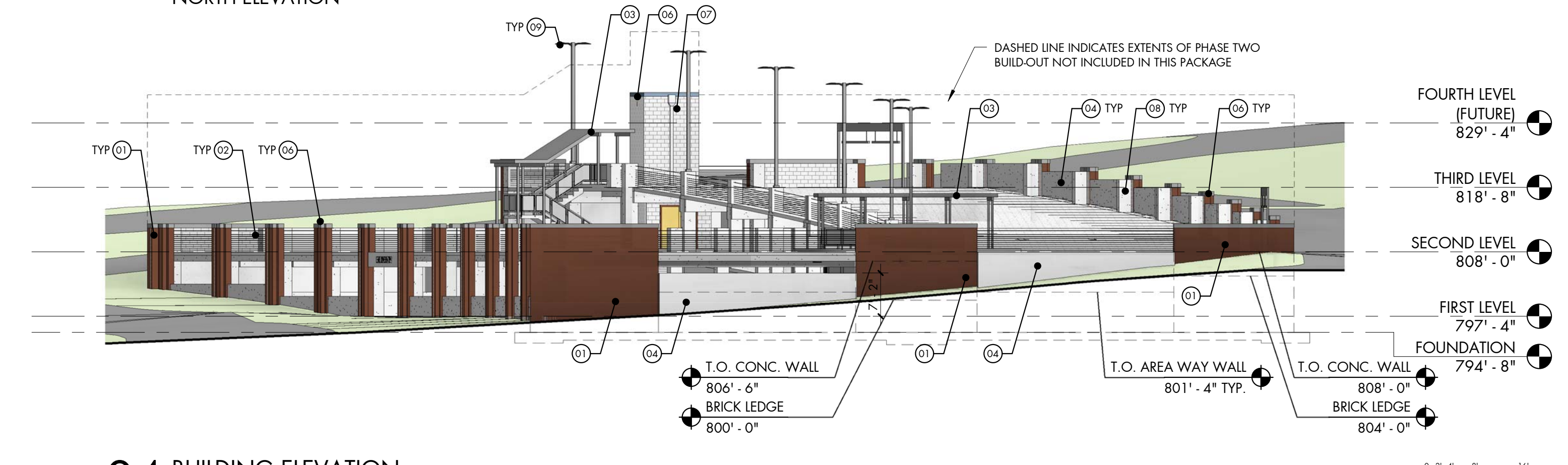
**- 01 BUILDING ELEVATION
WEST (KNOLLTOP LANE) ELEVATION**



**- 02 BUILDING ELEVATION
EAST ELEVATION**



**- 03 BUILDING ELEVATION
NORTH ELEVATION**



**- 04 BUILDING ELEVATION
SOUTH ELEVATION**