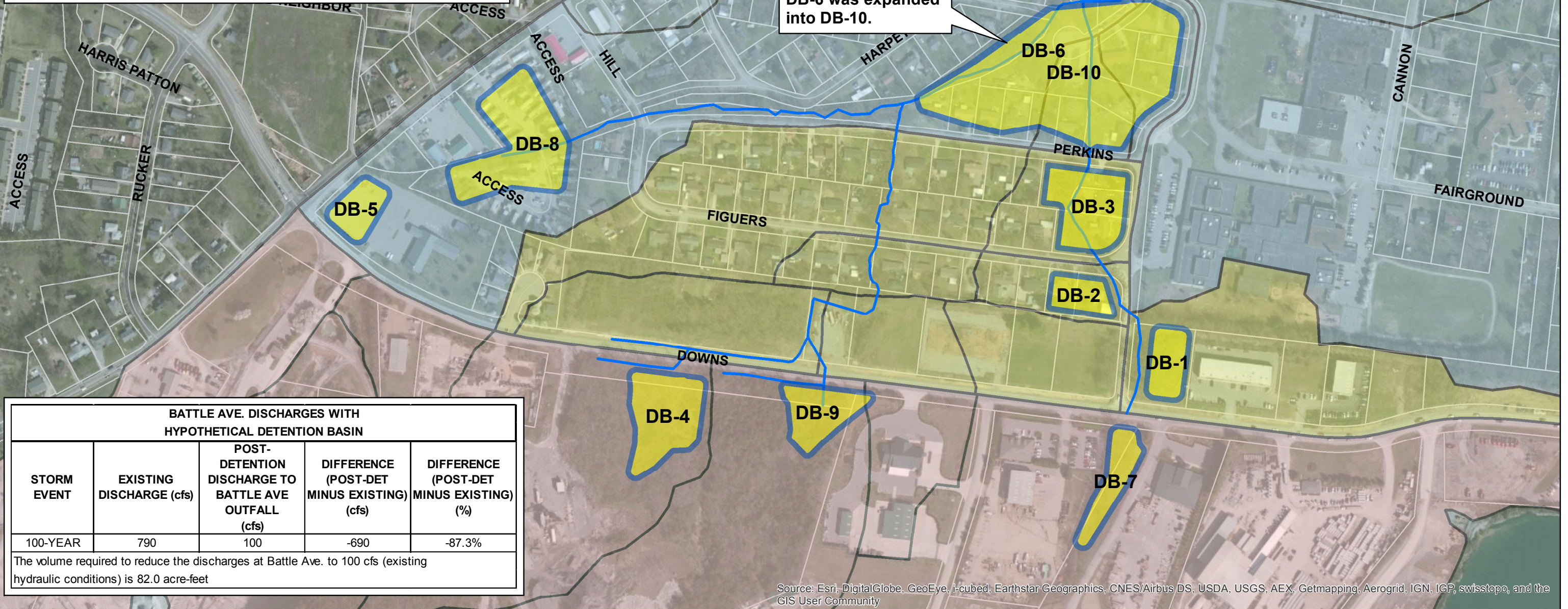


Figuers Drive Area Drainage Discussion - EXHIBIT H

| BATTLE AVE. DISCHARGES AFTER DETENTION | | | | |
|----------------------------------------|-----------------------------------------|------------------------------------------------------|--------------------------------------------|------------------------------------------|
| STORM EVENT | EXISTING DISCHARGE AT BATTLE AVE. (cfs) | POST-DETENTION DISCHARGE AT BATTLE AVE OUTFALL (cfs) | DIFFERENCE (POST-DET MINUS EXISTING) (cfs) | DIFFERENCE (POST-DET MINUS EXISTING) (%) |
| 2-YEAR | 268 | 118 | -150 | -55.9% |
| 5-YEAR | 403 | 176 | -226 | -56.2% |
| 10-YEAR | 504 | 211 | -294 | -58.2% |
| 25-YEAR | 620 | 259 | -361 | -58.2% |
| 50-YEAR | 707 | 349 | -358 | -50.6% |
| 100-YEAR | 790 | 433 | -357 | -45.2% |

All subbasins discharge into DB-10 except basins 01 and 02.



| BATTLE AVE. DISCHARGES WITH HYPOTHETICAL DETENTION BASIN | | | | |
|----------------------------------------------------------|--------------------------|------------------------------------------------------|--------------------------------------------|------------------------------------------|
| STORM EVENT | EXISTING DISCHARGE (cfs) | POST-DETENTION DISCHARGE TO BATTLE AVE OUTFALL (cfs) | DIFFERENCE (POST-DET MINUS EXISTING) (cfs) | DIFFERENCE (POST-DET MINUS EXISTING) (%) |
| 100-YEAR | 790 | 100 | -690 | -87.3% |

The volume required to reduce the discharges at Battle Ave. to 100 cfs (existing hydraulic conditions) is 82.0 acre-feet

Source: Esri, DigitalGlobe, GeoEye, i-cubed, Earthstar Geographics, CNES/Airbus DS, USDA, USGS, AEX, Getmapping, Aerogrid, IGN, IGP, swisstopo, and the GIS User Community

Legend

- Historical Structural Flooding
- POTENTIAL DETENTION AREAS
- Study Area Streams
- Battle Ave. Subbasins
- Figuers Dr. Subbasins
- Quarry Subbasins

CITY OF FRANKLIN
400 BLOCK BATTLE AVENUE
STORM WATER DETENTION EVALUATION

NEEL-SCHAFFER
Solutions you can build upon

NOT TO SCALE

POTENTIAL STORM WATER
DETENTION AREAS

EXHIBIT 2
August, 2014