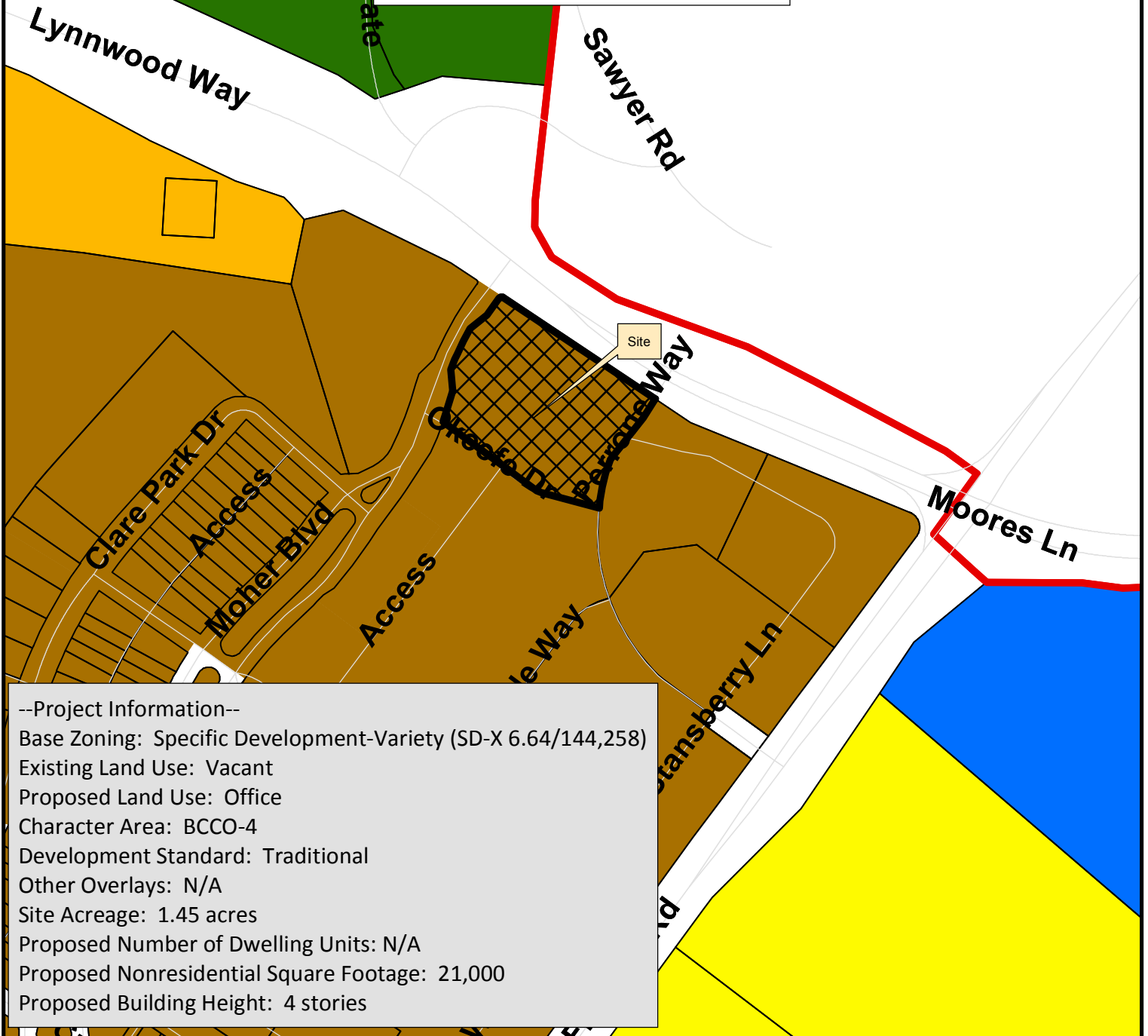


Gateway Village PUD Development Plan
Revision 4, Touchstone Office Building
Franklin Municipal Planning Commission
11/20/2014



--Project Information--

Base Zoning: Specific Development-Variety (SD-X 6.64/144,258)
Existing Land Use: Vacant
Proposed Land Use: Office
Character Area: BCCO-4
Development Standard: Traditional
Other Overlays: N/A
Site Acreage: 1.45 acres
Proposed Number of Dwelling Units: N/A
Proposed Nonresidential Square Footage: 21,000
Proposed Building Height: 4 stories

Touchstone Office

- | | |
|--|---------------------------------------|
| Touchstone Office | SD-R Specific Development-Residential |
| AG Agricultural District | SD-X Specific Development-Variety |
| ER Estate Residential | OR Office Residential District |
| R-1 Residential District | GO General Office District |
| R-2 Residential District | CC Central Commercial District |
| R-3 Residential District | NC Neighborhood Commercial District |
| R-6 Historic Core Residential District | GC General Commercial District |
| RM-10 Attached 10 Residential District | LI Light Industrial District |
| RM-15 Attached 15 Residential District | HI Heavy Industrial District |
| RM-20 Attached 20 Residential District | CI Civic and Institutional District |



0 250 500 1,000
Feet

This map was created by the Franklin Planning Department.
It was compiled from the most authentic information available.
The City is not responsible for any errors or omissions contained hereon.
All data and materials (c) copyright 2014. All rights reserved.