



HOUSING STUDIO

333 West Trade Street, Suite 300
Charlotte, NC 28202
T: 704.333.7862 F: 980.237.3862

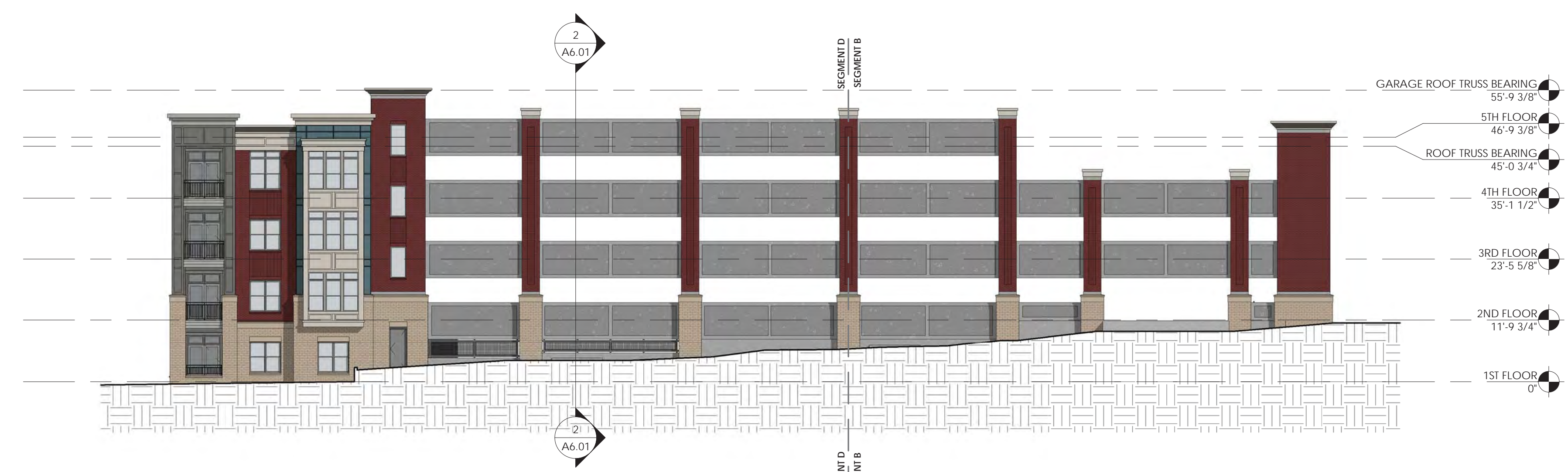
**NWR - MCEWEN
BLOCK B**
VOLUME 1: CIVIL, LANDSCAPE,
ARCHITECTURE
FRANKLIN, TENNESSEE

EAST ELEVATION / FACING DUVALL STREET		
MATERIALS	SURFACE AREA - SF	% OF NET
GROSS WALL	9,335	
NET* WALL	6,704	
NET BRICK - MODULAR	1,521	22.7%
NET BRICK - LG FORMAT	905	13.5%
NET METAL PANEL	0	
NET FIBER CEMENT BOARD & BATTEN	752	11.2%
NET PRECAST CONCRETE	3,529	52.6%

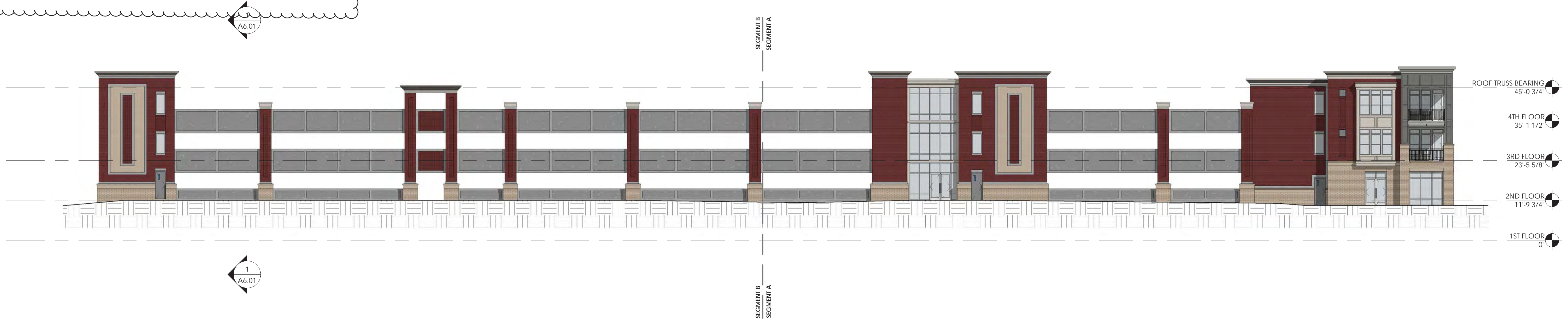
* Excludes roof forms, cornice, windows, doors, awnings, openings in precast deck, garage openings and similar forms

NORTH ELEVATION / FACING OFFICE BUILDING		
MATERIALS	SURFACE AREA - SF	% OF NET
GROSS WALL	12,146	
NET* WALL	8,663	
NET BRICK - MODULAR	3,331	38.5%
NET BRICK - LG FORMAT	1,037	12.0%
NET METAL PANEL	0	
NET FIBER CEMENT BOARD & BATTEN	342	3.9%
NET PRECAST CONCRETE	4,001	46.2%

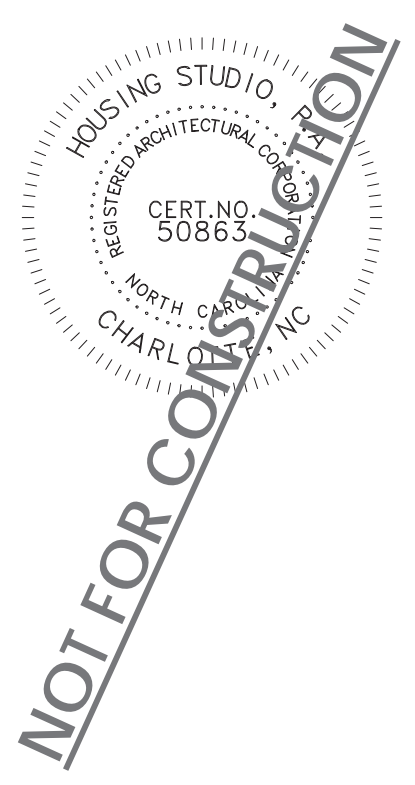
* Excludes roof forms, cornice, windows, doors, awnings, openings in precast deck, garage openings and similar forms



2 EAST KEY ELEVATION - COLOR
1/16" = 1'-0"



1 NORTH KEY ELEVATION - COLOR
1/16" = 1'-0"



Project Number: 1616
Issue Date: 03/20/2017
Issued For:
REV-05 18 APRIL 2017

NORTH & EAST
KEY ELEVATIONS -
COLOR

A5.07



HOUSING STUDIO

333 West Trade Street, Suite 300
Charlotte, NC 28202
T: 704.333.7862 F: 980.237.3862

NWR - MCEWEN
BLOCK B
VOLUME 1: CIVIL LANDSCAPE,
ARCHITECTURE
FRANKLIN, TENNESSEE

WEST ELEVATION / FACING SPRING CREEK DRIVE

MATERIALS	SURFACE AREA - SF	% OF NET
GROSS WALL	10,626	
NET* WALL	7,264	
NET BRICK - MODULAR	1,242	17.1%
NET BRICK - LG FORMAT	2,231	30.7%
NET METAL PANEL	0	
NET FIBER CEMENT BOARD & BATTEN	3,800	52.3%
NET PRECAST CONCRETE	0	

* Excludes roof forms, cornice, windows, doors, awnings, openings in precast deck, garage openings and similar forms

SOUTH ELEVATION / FACING OFFICE BUILDING

MATERIALS	SURFACE AREA - SF	% OF NET
GROSS WALL	20,145	
NET* WALL	13,790	
NET BRICK - MODULAR	3,670	26.6%
NET BRICK - LG FORMAT	3,688	26.7%
NET METAL PANEL	0	
NET FIBER CEMENT BOARD & BATTEN	6,329	45.9%
NET PRECAST CONCRETE	0	

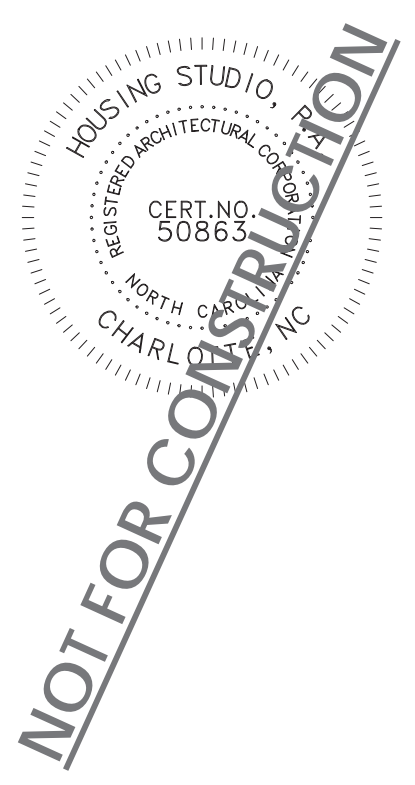
* Excludes roof forms, cornice, windows, doors, awnings, openings in precast deck, garage openings and similar forms



2 WEST KEY ELEVATION - COLOR
1/16" = 1'-0"



1 SOUTH KEY ELEVATION - COLOR
1/16" = 1'-0"



Project Number: 1616
Issue Date: 03/20/2017
Issued For:
REV-05 18 APRIL 2017

SOUTH & WEST
KEY ELEVATIONS -
COLOR

A5.08