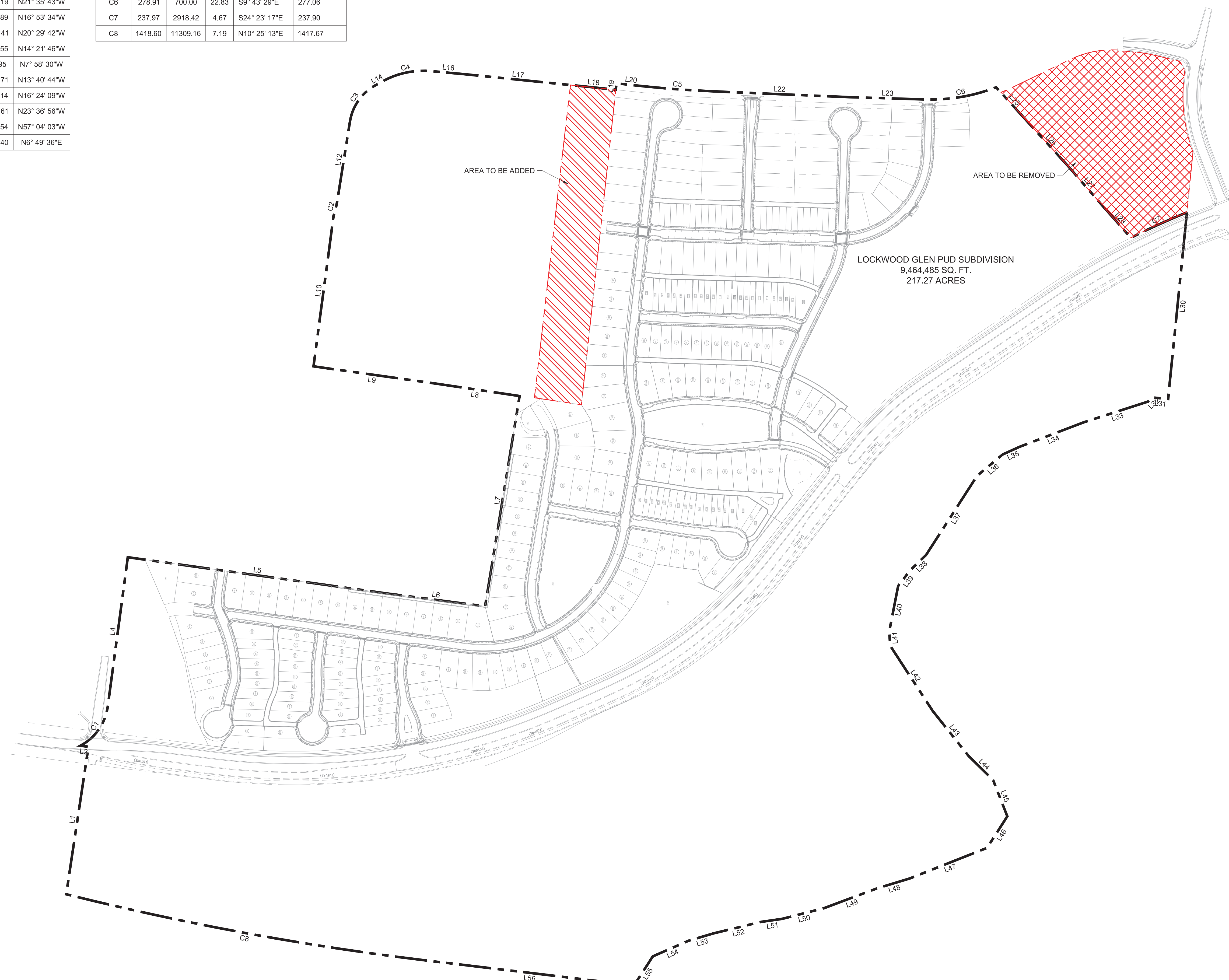


Line #	Length	Direction
L1	577.00	S81° 25' 13"E
L2	31.70	N7° 13' 56"E
L4	582.26	S82° 20' 54"E
L5	1007.65	S7° 57' 01"W
L6	387.69	S7° 26' 55"W
L7	824.24	S80° 41' 16"E
L8	343.04	N8° 26' 26"E
L9	462.57	N8° 01' 21"E
L10	586.85	S82° 24' 09"E
L12	304.54	S80° 56' 29"E
L14	33.26	S28° 37' 07"E
L16	132.33	S5° 13' 31"W
L17	409.91	S5° 50' 37"W
L18	176.27	S5° 50' 37"W
L19	24.60	S83° 46' 25"E
L20	110.27	S6° 04' 28"W
L22	542.39	S2° 27' 07"W

Line #	Length	Direction
L23	295.29	S1° 41' 23"W
L25	169.35	S47° 37' 03"W
L26	249.50	S47° 37' 03"W
L27	196.32	S49° 03' 53"W
L28	166.16	S48° 22' 44"W
L30	725.93	N84° 15' 00"W
L31	59.34	N5° 38' 57"E
L32	23.93	N40° 39' 23"W
L33	262.02	N17° 52' 55"W
L34	265.99	N20° 52' 26"W
L35	71.18	N24° 21' 08"W
L36	128.68	N39° 51' 01"W
L37	364.80	N57° 12' 14"W
L38	85.11	N43° 47' 46"W
L39	76.98	N52° 31' 09"W
L40	178.83	N78° 58' 32"W
L41	55.76	S86° 16' 14"W

Line #	Length	Direction
L42	301.01	S56° 53' 55"W
L43	222.92	S51° 26' 40"W
L44	132.82	S44° 27' 33"W
L45	150.64	S68° 36' 30"W
L46	145.06	N57° 18' 02"W
L47	322.19	N21° 35' 43"W
L48	134.89	N16° 53' 34"W
L49	215.41	N20° 29' 42"W
L50	168.55	N14° 21' 46"W
L51	81.95	N7° 58' 30"W
L52	188.71	N13° 40' 44"W
L53	101.14	N16° 24' 09"W
L54	150.61	N23° 36' 56"W
L55	133.54	N57° 04' 03"W
L56	808.40	N6° 49' 36"E

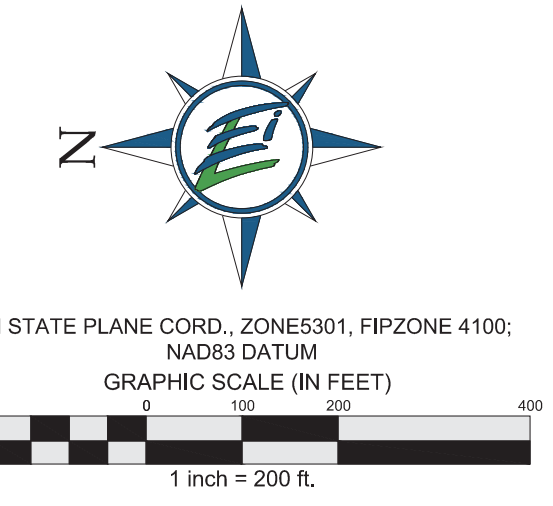
Curve #	Length	Radius	Delta	Chord Direction	Chord Length
C1	192.68	202.54	54.51	S55° 05' 41"E	185.50
C2	66.85	432.00	8.87	S76° 30' 31"E	66.78
C3	178.08	195.00	52.32	S54° 46' 48"E	171.95
C4	191.97	325.00	33.84	S11° 41' 48"E	189.19
C5	249.92	3953.11	3.62	S4° 15' 48"W	249.88
C6	278.91	700.00	22.83	S9° 43' 29"E	277.06
C7	237.97	2918.42	4.67	S24° 23' 17"E	237.90
C8	1418.60	11309.16	7.19	N10° 25' 13"E	1417.67



**Property Description**

Land situated in the 9th Civil District and the 14th Civil District of Williamson County, Tennessee, being a portion of the properties conveyed to Lockwood Family LP by Dorris R. Lockwood, of record in Deed book 1777, Page 759, and Deed book 1777, Page 761, and a portion of the property conveyed to Lockwood Construction Company by Anthony B. Jamison, of record in Deed book 656, Page 650, in the Register's Office of Williamson County, Tennessee (R.O.W.C., TN.), and being more particularly described as follows:

**Beginning** at a concrete Right of Way monument in the easterly margin of Interstate 65, being the northwest corner of the Crescent Lockwood, LLC, property of record in Book 6302, Page 691, R.O.W.C., TN.; thence leaving said Interstate 65 margin, S 81° 25' 13" E, for a distance of 577.00' to an iron rod (old); thence, N 07° 13' 56" E, for a distance of 31.70' to an iron rod in the southwest margin of Carothers Road; thence, with a curve to the left, with an arc length of 192.68', a radius of 202.54', with a chord bearing of S 55° 05' 41" E, and a chord length of 185.50' to an iron rod (old); thence, S 82° 20' 54" E, for a distance of 582.26' to an iron rod (old); thence, leaving said margin, along the west property line of Alligood, Deed Book 1202, Page 845 (R.O.W.C., TN.) S 07° 57' 01" W, for a distance of 1007.65' to an iron rod (old); thence, S 07° 26' 55" W, for a distance of 387.69' to an iron rod (old); thence, along the south property lines of above mentioned Alligood, and Davis property of record in Deed Book 435, Page 126 (R.O.W.C., TN.) S 80° 41' 16" E, for a distance of 824.24' to an iron rod (old); thence, along east property line of said Davis property, N 08° 26' 26" E, for a distance of 343.04' to an iron rod (old); thence, along east property line of the Strain property of record in Record Book 5632, Page 184 (R.O.W.C., TN.) N 08° 01' 21" E, for a distance of 462.57' to an iron rod (old) in the center of an old road bed; thence, along said center of old road, S 82° 24' 09" E, for a distance of 586.85' to an iron rod (old) in the southerly margin of Carothers Road; thence, along said margin for the next seven (7) calls, with a curve to the left, with an arc length of 66.85', with a radius of 432.00', with a chord bearing of S 76° 30' 31" E, and chord length of 66.78' to an iron rod (old); thence, S 80° 56' 29" E, for a distance of 304.54' to an iron rod (old); thence, with a curve to the right, with an arc length of 178.08', a radius of 195.00', with a chord bearing of S 54° 46' 48" E, and chord length of 171.95' to an iron rod (old); thence, S 28° 37' 07" E, for a distance of 33.26' to an iron rod (old); thence, with a curve to the right, with an arc length of 191.97', a radius of 325.00', with a chord bearing of S 11° 41' 48" E, and chord length of 189.19'; thence, S 05° 13' 31" W, for a distance of 132.33'; thence, S 05° 50' 37" W, passing an iron rod (old) at a distance of 409.91' for a total distance of 586.18' to an iron rod (old); thence, S 05° 50' 37" W, for a distance of 409.91' to an iron rod (old); thence, S 83° 46' 25" E, for a distance of 24.60' to a point in the centerline of said Carothers Road; thence, along said centerline for the next six (6) calls, S 06° 04' 28" W, for a distance of 110.27' to a point; thence, with a curve to the left, with an arc length of 249.92', a radius of 3953.11', a chord bearing of S 04° 15' 48" W, and chord length of 249.88' to a point; thence, S 02° 27' 07" W, for a distance of 542.39' to a point; thence, S 01° 41' 23" W, for a distance of 295.29' to a point; thence, with a curve to the left with an arc length of 278.90', with a radius of 700.00', with a chord bearing of S 09° 43' 29" E, and chord length of 277.10' to a point; thence, leaving said centerline, S 47° 37' 03" W, passing an iron rod (old) at 125.09', an iron rod (old) at additional 240.50', for a total distance of 418.85'; thence, S 49° 05' 53" W, a distance of 196.32' to an iron rod (old); thence, S 48° 22' 44" W, passing an iron rod (old) at a distance of 93.57', for a total distance of 166.16' to an iron rod (old); thence, with a curve to the right, with an arc length of 237.93', a radius of 2,929.79', with a chord bearing of S 24° 23' 17" E, and chord length of 237.87' to an iron rod (old); thence, N 84° 15' 00" W, for a distance of 725.92' to a point in the center of the Harpeth River, passing a witness rod at top of bank at a distance of 665.34'; thence, along said centerline of river for the next twenty-five (25) calls, N 05° 38' 57" E, a distance of 59.34' to a point; thence, N 40° 39' 23" W, for a distance of 23.93' to a point; thence, N 17° 52' 55" W, for a distance of 262.02' to a point; thence, N 20° 52' 26" W, for a distance of 265.99' to a point; thence, N 24° 21' 08" W, for a distance of 71.18' to a point; thence, N 39° 51' 01" W, for a distance of 128.68' to a point; thence, N 57° 12' 14" W, for a distance of 364.80' to a point; thence, N 43° 47' 46" W, for a distance of 85.11' to a point; thence, N 52° 31' 09" W, for a distance of 76.98' to a point; thence, N 78° 58' 32" W, for a distance of 178.83' to a point; thence, S 86° 16' 14" W, for a distance of 55.76' to a point; thence, S 56° 53' 55" W, for a distance of 301.01' to a point; thence, S 51° 26' 40" W, for a distance of 222.92' to a point; thence, S 44° 27' 33" W, for a distance of 132.82' to a point; thence, S 08° 36' 30" W, for a distance of 150.64' to a point; thence, N 57° 18' 02" W, for a distance of 145.06' to a point; thence, N 21° 35' 43" W, for a distance of 322.19' to a point; thence, N 16° 53' 34" W, for a distance of 134.89' to a point; thence, N 20° 29' 42" W, for a distance of 215.41' to a point; thence, N 14° 21' 46" W, for a distance of 168.55' to a point; thence, N 07° 58' 30" W, for a distance of 81.95' to a point; thence, N 13° 40' 44" W, for a distance of 188.71' to a point; thence, N 16° 24' 09" W, for a distance of 101.14' to a point; thence, N 23° 36' 56" W, for a distance of 150.61' to a point; thence, N 57° 04' 03" W, for a distance of 133.54' to a point; thence, along above mentioned east margin of Interstate 65, N 06° 49' 36" E, passing a witness rod (old) at a distance of 200.00'; for a total distance of 808.40' to an iron rod (old); thence, with a curve to the right, with an arc length of 1418.60', a radius of 11309.16', with a chord bearing of N 10° 25' 13" E, and chord length of 1417.67' to the Point of Beginning, Containing 9,464,484.9 Sq. Ft. or 217.27 Acres. According to a survey made by Fisher Arnold, dated June, 2009.



EDGE  
 PLANNING LANDSCAPE ARCHITECTURE URBAN DESIGN  
 210 Twelfth Avenue South  
 Suite 202  
 Nashville, Tennessee 37203  
 P 615-250-8154  
 F 615-250-8155

ENERGY LAND & INFRASTRUCTURE  
 1420 DONELSON PIKE, SUITE A12 • NASHVILLE, TN 37217  
 OFFICE 615-383-6300 • WWW.ELI-LLC.COM  
 ENGINEERS • SURVEYORS • INFRASTRUCTURE • ENVIRONMENTAL

**KING PARCEL REZONING**

CITY OF FRANKLIN PROJECT NO. 6121  
 FRANKLIN, TENNESSEE

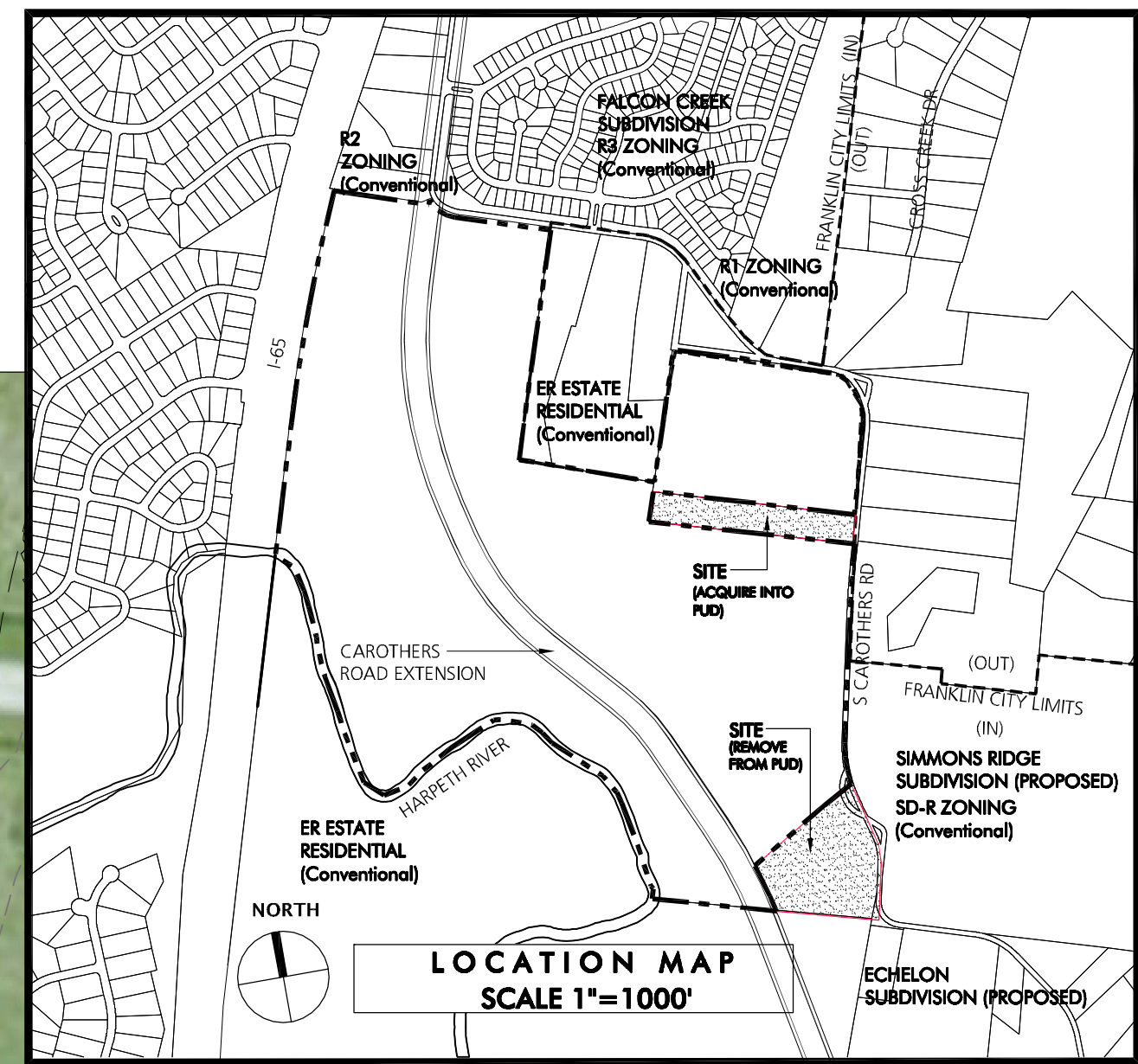
Rev.	Date	Per City of Franklin Comments	Revision Description
1	5/4/16		



Issue Date: 11 April 2016  
 ELI Project No: 14-11-1102.4  
 Drafted By: RDP  
 Checked By: LCW  
 Sheet Title:

**REVISED  
 BOUNDARY  
 DESCRIPTION**

Sheet No.  
**C 0.4**



SITE DATA	
SITE AREA	+/- 5.03 ACRES
MAP & PARCEL NUMBER	MAP 89, PARCEL 43.06
ADDRESS	4373 SOUTH CAROTHERS RD.
EXISTING ZONING	ESTATE RESIDENTIAL (ER)
PROPOSED ZONING	SD-R 2.92
CHARACTER AREA	MCEWEN
SPECIAL AREA	6
DEVELOPMENT STANDARD	CONVENTIONAL
EXISTING LAND USE	RESIDENTIAL ESTATE
PROPOSED LAND USE	RESIDENTIAL SINGLE-FAMILY (INCORPORATE INTO LOCKWOOD GLEN COMMUNITY)

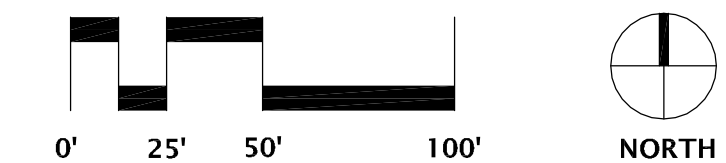
**PROPERTY DESCRIPTION**

LAND SITUATED IN THE 9TH CIVIL DISTRICT AND THE 14TH CIVIL DISTRICT OF WILLIAMSON COUNTY, TENNESSEE, AND CURRENTLY KNOWN AS THE KING PROPERTY OF RECORD IN RECORD BOOK 5945, PAGE 236, IN THE REGISTER'S OFFICE OF WILLIAMSON COUNTY, TENNESSEE (R.O.W.C., TN.), AND BEING MORE PARTICULARLY DESCRIBED AS FOLLOWS:

**COMMENCING** AT AN IRON ROD (OLD) IN THE WESTERLY MARGIN OF CAROTHERS ROAD; THENCE, S 05°50'37" W, FOR A DISTANCE OF 409.91' TO THE **POINT OF BEGINNING**, SAID POINT BEING AN IRON ROD (OLD); AND THE NORTHEAST CORNER OF HEREIN DESCRIBED PROPERTY; THENCE, ALONG SAID WESTERLY MARGIN, S 05°50'37" W, FOR A DISTANCE OF 176.28' TO AN IRON ROD (SET); THENCE, LEAVING WESTERLY MARGIN, ALONG THE NORTH LINE OF LOCKWOOD GLEN, SECTION 4, N 83°46'25" W, FOR A DISTANCE OF 1,250.97' TO AN IRON ROD (OLD) BEING THE SOUTHWEST CORNER OF HEREIN DESCRIBED PROPERTY; THENCE, WITH THE EAST LINE OF THE CRESCENT LOCKWOOD PROPERTY OF RECORD IN RECORD BOOK 6121, PAGE 973 (R.O.W.C., TN.), AND THE WEST LINE OF HEREIN DESCRIBED PROPERTY, N 08°31'03" E, FOR A DISTANCE OF 184.00' TO AN IRON ROD (OLD) BEING THE NORTHWEST CORNER OF HEREIN DESCRIBED PROPERTY; THENCE, S 83°25'00" E, FOR A DISTANCE OF 1,217.86' TO THE **POINT OF BEGINNING**, CONTAINING 220,060.8 SQ. FT. OR 5.05 ACRES. ACCORDING TO A SURVEY MADE BY FISHER ARNOLD, DATED JUNE, 2009.

**DEVELOPER:**  
 CHRIS PASCARELLA  
 CRESCENT LOCKWOOD, LLC  
 205 POWELL AVENUE  
 BRENTWOOD, TN 37027  
 (615) 312-8242  
 kpascarella@pearlstreetpartners.com

**APPLICANT:**  
 JOHN HAAS  
 EDGE  
 210 12TH AVE. SOUTH  
 SUITE 202  
 NASHVILLE TN, 37203  
 (615) 250-8154  
 jhaas@edgega.com



**EDGE**  
 PLANNED LANDSCAPE ARCHITECTURE & CIVIL DESIGN  
 210 Twelfth Avenue South  
 Suite 202  
 Nashville, Tennessee 37203  
 P 615-250-8154  
 F 615-250-8155

CONSULTANTS



PROJECT TITLE  
**KING PARCEL  
 REZONING  
 C.O.F. #6121  
 FRANKLIN, TN**

CLIENT  
**CRESCENT  
 LOCKWOOD LLC.  
 FRANKLIN, TN.**

PROJECT NO. 6121  
 Date 04/11/16  
 Revisions  
 05.05.16 PER C.O.F. COMMENTS

Sheet Title

**REZONING  
 SHEET**  
 Sheet Number

**R-1.0**